



Western Cape
Government

Education



Western Cape Education Department
... at a glance
May 2014



>>> Western Cape Education Department ... at a glance

May 2014

Introduction

The Western Cape Education Department (WCED) is responsible for primary and secondary school education in the province. We provide various specialised education services and subsidise Grade R and adult education.

Key priorities

- Improve language and mathematics performance in primary schools
- Increase the number and improve the quality of passes in the National Senior Certificate examinations
- Reduce the number of under-performing schools

Key structures

- Head office - focus on policy development, strategy, planning and coordination
- 8 district offices - focus on education management
- 49 circuit teams - focus on education support



Key statistics

- Schools: 1 460
- Primary schools: 1 086
- High schools: 374
- Learners (Grades 1 - 12): 962 537
- Primary school learners: 616 436
- High school learners: 346 101
- Teachers: 28 842
- Public servants: 8 496

Enrolment, 2013 - 2014

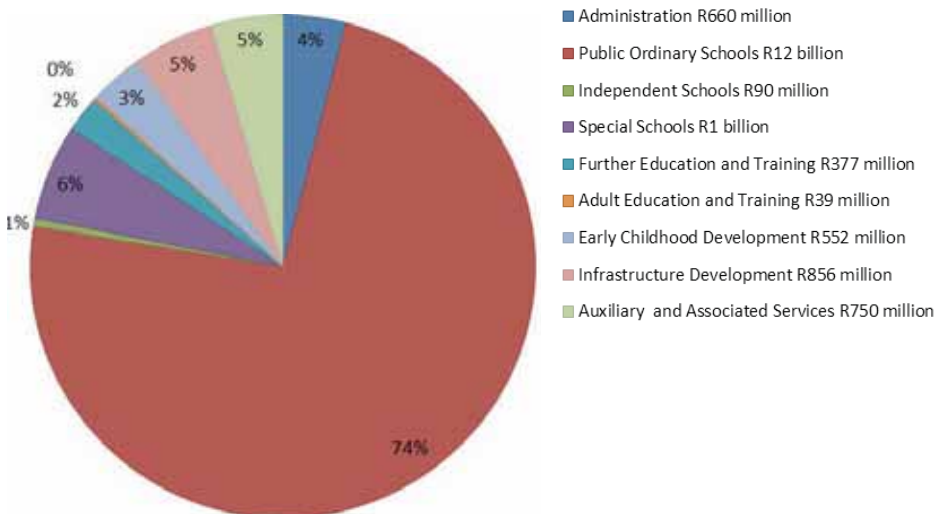
2013: 947 046

2014: 962 537

15 491 increase (1.64%)

Budget 2014/15

- Total: R16,425 billion (36.36% of provincial budget)
- Administration R660 million
- Public Ordinary Schools R12 billion (74% of the total Education Budget)
- Independent Schools R90 million
- Special Schools R1 billion
- Further Education and Training R377 million
- Adult Education and Training R39 million
- Early Childhood Development R552 million
- Infrastructure Development R856 million
- Auxiliary and Associated Services R750 million



Strategic priorities 2010 – 2019

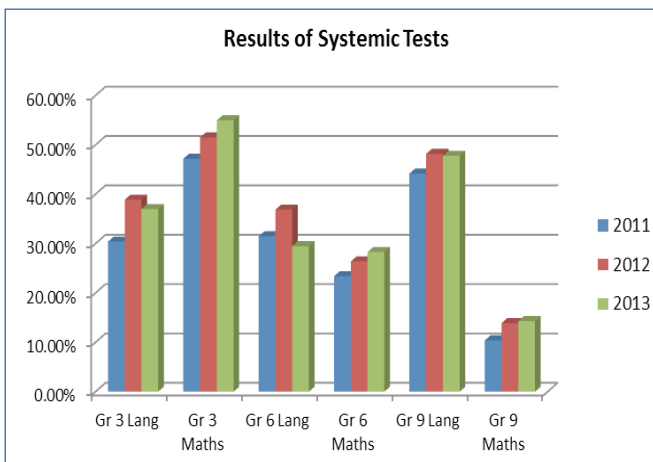
- Literacy and numeracy
- Accountability
- Faster response times and support
- Teacher morale
- Quality texts and materials
- Poverty and crime
- School maintenance
- Redress
- Migration and new schools
- School management and leadership

2019 targets

- Grade 3, 6, 9 literacy: 90%
- Grade 3, 6, 9 numeracy: 80%
- Grade 12 pass rate: 87% (50 000)
- Grade 12 university entrance: 45%
- Grade 12 Maths passes: 22 000
- Grade 12 Science passes: 16 000

Literacy and numeracy strategy

- Annual testing since 2002 (WCED Systemic Tests)
- Initial focus: Grades 3 and 6, alternate years
- Current focus: Grades 3, 6 and 9, every year
- Data analysis and intervention planning
- Teacher training and support
- Text-rich schools
- Parent mobilization
- Annual National Assessments, introduced 2011



2013 matric results (2012 in brackets)

- Passed: 40 558 (36 992)
- Pass rate: 85.1% (82.8%)
- Endorsement: 19 477, 40.9% (16 319, 36.5%)
- Maths passes: 12 216, 73.3% (11 311, 73.5%)
- Physical Sciences passes: 8 333, 72.6% (7 995, 70.9%)

Matric results, 5-year comparison

Passed

2009: 34 017 (75.7%)

2013: 40 558 (85.1%)

Endorsement

2009: 14 324 (31.9%)

2013: 19 477 (40.9%)

Schools with pass rates >90%:

2009: 167

2013: 204

Schools with pass rates <60%:

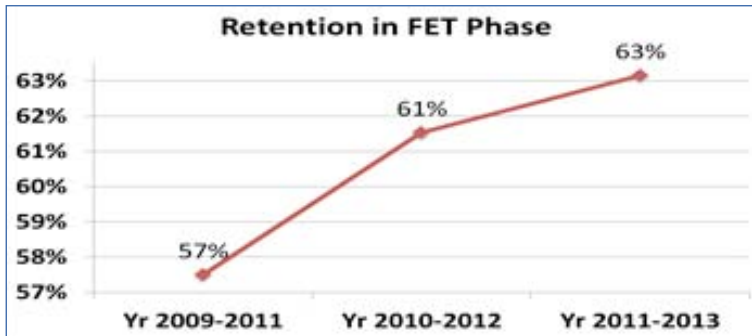
2009: 85

2013: 23

Extra Grade 12 support

- Analysis of results, per school and per paper
- Special support per school, as required
- Broadcast lessons by expert teachers via satellite to 120 schools (Telematics)
- Holiday schools, teaching by best teachers
- 'Tips for Success' study guides per subject
- Matric support website with video support for selected subjects
- Matric revision supplements for each candidate
- Heavy investment in textbooks

Retention (enrolment)



Retention (Grade 10 to matric pass)

2009: 36.9%

2013: 52.1%

School funding

- No fee schools: 887 (Quintiles 1 to 3, 216 schools in Quintiles 4 and 5)
- Fee-paying schools: 573 (Quintiles 4 and 5)
- Learners at no-fee schools: 552 891
- Norms and standards allocations to all schools

School nutrition

- Learners: 440 000
- Schools: 1 020
- Meals: breakfast and lunch
- Menus include: rice, samp, soya mince, pilchards, fruit, vegetables, bread, jam, peanut butter, cereals.
- Qualifying schools: primary and high schools in Quintiles 1 to 3; identified learners in Quintiles 4 and 5 schools

Learner transport

The WCED provides transport to learners living in poor communities who live more than 5 kms from their nearest school, and where public transport is not available.

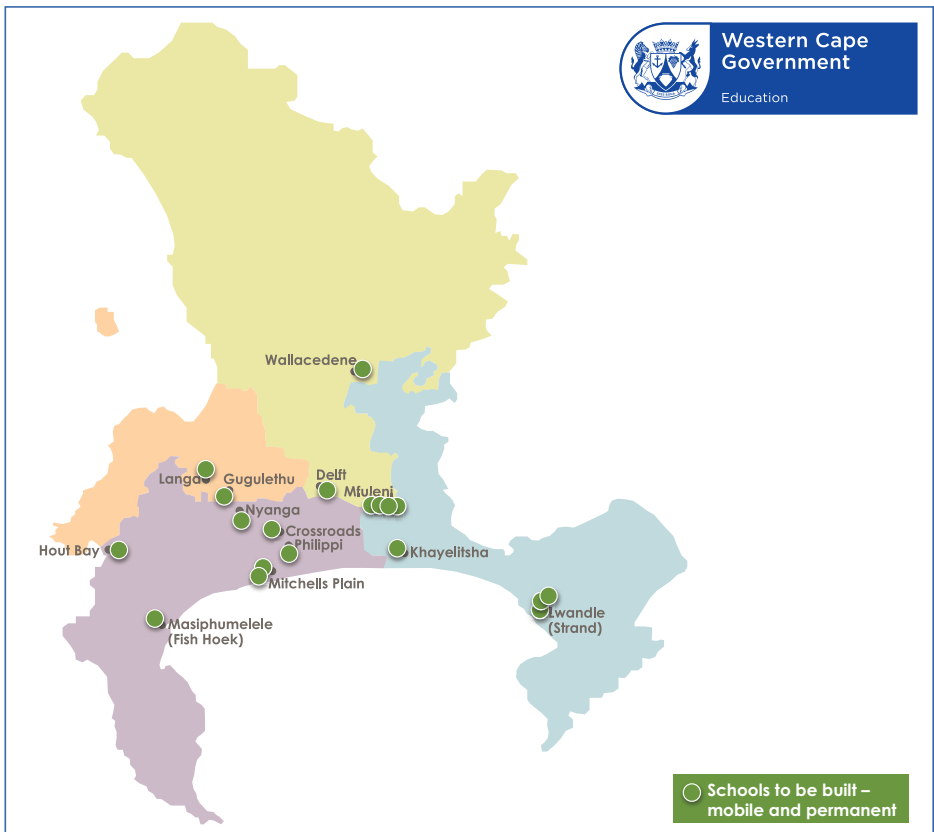
- 50 000 learners
- 516 routes, mainly rural areas
- 1 200 Grade R learners (2014/15)

Grade R

- Learners: 62 000
- Public schools with Grade R: 939
- Budget: 2014/15: R552 million
- Building plans 2014/15: 81 Grade R classrooms
- Support 2014/15: includes starter kits for 130 public schools, 20 independent preschools
- School readiness: 17 000 learners assessed in 2013

Infrastructure planning 2014 - 2016

- 29 new schools
- 44 replacement schools
- 418 maintenance projects
- 141 Grade R classrooms



New schools 2014 - 2016

Text-rich schools

- Three-year programme, 2012 – 2014
- Supports introduction of Curriculum and Assessment Policy Statement (CAPS)
- Textbooks and reading books:
 - 2012: 1.9 million
 - 2013: 2.26 million
 - 2014: 3.9 million
 - Total: 8 million
- CAPS teacher guides: 97 200
- Investment 2011/12 to 2013/14: R605 million
- Online textbook ordering system
- Department of Basic Education provides workbooks

Curriculum and Assessment Policy Statement (CAPS)

- Latest curriculum version
- Introduced over 3 years (2012 – 2014)
- Content largely the same, but more specific
- Focus on what should be taught when (sequence and pace)
- Greater focus on second language in Grade 1

Curriculum, Grades 1 to 3

- Home Language
- First Additional Language
- Mathematics
- Life Skills

Curriculum, Grades 4 – 9

- Languages
- Maths
- Natural Sciences
- Technology
- Social Sciences
- Arts and Culture
- Life Orientation
- Economic and management sciences

Curriculum Grades 10 – 12

- Compulsory (4): Maths or Maths literacy, two languages, Life Orientation
- Choice (3): choose 3 subjects from 23 subjects in 6 learning areas
- Six learning areas: Languages; Arts and Culture; Social Studies; Science; Business, Commerce and Management; Manufacturing, Engineering and Technology

Safe Schools

- Secure physical environment
- Improve social environment (behaviour, youth development programmes)
- Policy and planning support
- Partnerships and community mobilisation
- Safe Schools Call Centre: 20 000 calls a year

Technology

- All schools have technology
- 50 000 computers (this includes the administration PCs)
- 1 500 Servers
- 2 311 Laptops
- 4 083 Data Projectors
- 2 263 interactive white boards in 641 schools

Teacher training

- University of Cape Town
- University of Stellenbosch
- University of the Western Cape
- Cape Peninsula University of Technology
- Cape Teaching and Leadership Institute (WCED in service training)

Appendix

Enrolment 1997 – 2014

| Year | GR1 | GR2 | GR3 | GR4 | GR5 | GR6 | GR7 | GR8 | GR9 | GR10 | GR11 | GR12 |
|------|--------|-------|-------|-------|-------|-------|-------|-------|-------|-------|-------|-------|
| 1997 | 97854 | 84892 | 80608 | 81191 | 76894 | 74368 | 70967 | 73261 | 64892 | 57070 | 44586 | 38940 |
| 1998 | 99380 | 90168 | 85625 | 85188 | 80881 | 76716 | 73928 | 76949 | 67644 | 61926 | 46115 | 40980 |
| 1999 | 87436 | 92925 | 88613 | 88014 | 83074 | 78495 | 74661 | 79043 | 69674 | 63479 | 49247 | 40206 |
| 2000 | 64844 | 81865 | 92343 | 91949 | 85766 | 80658 | 75813 | 80026 | 70634 | 63840 | 48934 | 40996 |
| 2001 | 81790 | 62960 | 81832 | 94302 | 89254 | 83305 | 77778 | 82190 | 71966 | 67034 | 50206 | 39910 |
| 2002 | 86969 | 77026 | 64134 | 83022 | 93188 | 86786 | 80865 | 75601 | 80450 | 69752 | 51618 | 40468 |
| 2003 | 86916 | 82454 | 75931 | 66033 | 82383 | 92341 | 84514 | 81154 | 73200 | 81739 | 51746 | 39644 |
| 2004 | 104105 | 82130 | 81489 | 76781 | 66060 | 82574 | 89614 | 85053 | 78964 | 80756 | 54199 | 39451 |
| 2005 | 93515 | 94231 | 80695 | 80809 | 74984 | 66141 | 81953 | 88778 | 82169 | 81577 | 56657 | 39303 |
| 2006 | 87650 | 85972 | 89828 | 80443 | 77811 | 73106 | 65347 | 78926 | 80595 | 83529 | 57536 | 40198 |
| 2007 | 92818 | 82562 | 83914 | 89973 | 78674 | 78021 | 72733 | 66406 | 80697 | 86495 | 61938 | 42624 |
| 2008 | 91853 | 83267 | 79454 | 85891 | 87116 | 78290 | 76146 | 71410 | 72914 | 79133 | 63819 | 43470 |
| 2009 | 93601 | 82158 | 80385 | 83150 | 82382 | 85621 | 76262 | 75227 | 79795 | 68405 | 60812 | 45692 |
| 2010 | 98086 | 83046 | 79155 | 84234 | 80290 | 81402 | 82777 | 75426 | 85114 | 70630 | 53799 | 44876 |
| 2011 | 100423 | 85216 | 79489 | 83490 | 80205 | 79022 | 78207 | 81312 | 84957 | 73470 | 56995 | 38990 |
| 2012 | 103444 | 88536 | 81415 | 83922 | 79900 | 78384 | 76432 | 77561 | 90815 | 72714 | 58758 | 43111 |
| 2013 | 104678 | 93506 | 85762 | 85599 | 79210 | 78437 | 76238 | 75528 | 87132 | 78812 | 56109 | 46035 |
| 2014 | 106330 | 97508 | 89250 | 90531 | 81388 | 76660 | 74769 | 75631 | 82996 | 75881 | 64852 | 46741 |

Matric results 2009 – 2013

| Year | Wrote | Passed | % Pass | Access to B. Deg. | % Access to B. Deg. | Schools with pass rate <60% |
|------|--------|--------|--------|-------------------|---------------------|-----------------------------|
| 2009 | 44 931 | 34 017 | 75.7 | 14 324 | 31.9 | 85 |
| 2010 | 45 783 | 35 139 | 76.8 | 14 414 | 31.5 | 78 |
| 2011 | 39 988 | 33 146 | 82.9 | 15 215 | 38.1 | 30 |
| 2012 | 44 700 | 36 992 | 82.8 | 16 319 | 36.5 | 26 |
| 2013 | 47 636 | 40 558 | 85.1 | 19 477 | 40.9 | 23 |

Contact details

| Location | Postal address | Telephone | Fax |
|-----------------------------------|--|--------------|--------------|
| WCED Head Office | Private Bag x9114, Cape Town | 021 467 2000 | 021 467 2996 |
| Education District Offices | | | |
| Central | Private Bag x4, Athlone, 7760 | 021 514 6700 | 021 514 6953 |
| East | Private Bag x23, Kuilsriver, 7579 | 021 900 7000 | 021 903 9484 |
| North | Private Bag x45, Parow, 7500 | 021 938 3000 | 021 938 3180 |
| South | Private Bag x2, Mitchell's Plain, 7785 | 021 370 2000 | 021 372 1856 |
| Overberg | Private Bag x8, Caledon, 6230 | 028 214 7300 | 028 214 7400 |
| West Coast | Private Bag x3026, Paarl, 7620 | 021 860 1200 | 021 860 1231 |
| Cape Winelands | Private Bag x3102, Worcester, 6850 | 023 348 4600 | 086 693 4513 |
| Eden & Central Karoo | Private Bag x6510, George, 6850 | 044 803 8300 | 044 873 2253 |

| WCED Call Centres | |
|-----------------------------|---|
| Personnel & finance queries | 0861 92 33 22 |
| Safe Schools | 0800 45 46 47 |
| Web site | http://wced.school.za |

Head Education

Penny Vajjaveid

