

ICANDELO 4 – IINGXELO ZEZIMALI ZONYAKA

Iziqulatho

Iphepha

Ingxelo yeGosa locwangciso-zincwadi zemali	1
Ingxelo yoMphicothi-ncwadi zemali jikelele	7
Imigaqo-nkqubo yomcwangcisi-ncwadi zemali.....	14
Ingxelo yolwabiwo-mali	22
Amanqaku kwingxelo yolwabiwo-mali	32
Ingxelo yenkqubo yosetyenziso lwemali	33
Ingxelo yobume bezimali.....	34
Ingxelo kutshintsho kwiasethi zizonke.....	35
Ingxelo ngemali ezinkozo.....	36
Amanqaku ngeNgxelo zeziMali zonyaka.....	37
Amanqaku abhengeziweyo ngengxelo zeziMali zonyaka..	47
Izihlomelo	
Isihlomelo 1A	53
Isihlomelo 1B	54
Isihlomelo 1C	55
Isihlomelo 1D	56
Isihlomelo 1E	57
Isihlomelo 1F.....	58
Isihlomelo 1G	59
Isihlomelo 2A	60
Isihlomelo 2B	61
Isihlomelo 3.....	62
Isihlomelo 4	63

**ISEBE LEMFUNDO LENTSHONA KOLONI
VOTI 5**

**INGXELO YEGOSA ELINIKA INKCAZA
yonyaka ophele ngowama-31 Matshi 2007**

1. Uphononongo jikelele lwemicimbi yezimali

Uvunyo nolwamkelo ngokusesikweni lwabo bonke abachaphazelekayo kwisiCwangciso soPhuhliso lwezakhono esibizwa ngokuba yiHuman Capital Development Strategy (HCDS), yenye yeentsika eziphambili zeSicwangciso zeKapa elihlumayo noluhlahle indlela eyodwa yeSebe leMfundo lePhondo leNtshona koloni. Ulungelelwaniso lwemicimbi yonke yesebe lungaqinisa ngokuzingisileyo ngoku. Inkqubo yohlengahlengiso lwabasebenzi, engomnye wemicimbi eyeyona ingundoqo kolu lungelelwaniso lwesebe oqinisekisa ufezekiso lwe-HCDS, lwaqala kwesi sihlantlo siphantsi kophononongo sithetha nje. Oku kubonisa inyathelo elibalulekileyo elijolise ekuncediseni izikolo ekuboneleleni ngemfundo esemgangathweni.

Isebe liziphumeze ngokokuceba kwalo izicwangciso zalo ezingundoqo nebezijolise kwiindawo ezithile eziphambili. Ukunyuka kwengxowa-mali kwiinkalo ezizodwa ebezicetyiwe kuqinisekise ukuba isebe liziphumeze ngokwamkelekileyo ezo ndawo zithile ziphambili. Kambe, azikhange ziphele iingxaki ekuye kwafuneka ukuba lijamelene nazo isebe eli, ngxaki ezo ezifana noPhuhliso lwabasaqala isikolo nalapho, kumathuba athile, kungakhange kukhutshwe zithenda ngenxa yobutsha nobuntuntunu bemakethe le.

Isixa esikhulu sengxowa yalo isebe lisizuka kwizabelo, nesisabelo esisesona sikhulu apha ephondweni. Ngenxa yesakhono sokusebenzisa imali ngobunono, isebe laphumelela ukuzuka inkxaso-mali eyongezelelweyo esisixa esizizigidi ezingama-R65 ngexesha lolungelelwaniso lweeziseko ezingundoqo. Kwanyanzeleka ukuba kwenziwe imigudu ukuqinisekisa ukuba iofisi kaNondyebo kaZwelonke iyayongeza imali engxoweni oko kunjengexalenye yoMthetho wezolwabiwo-zimali zikarhulumente. Isebe lenza njengoko kufanelekile ukuyisebenzisa le mali ukuvula isikhewu seziseko ezingundoqo ebekufanele ukuba zimiselwe ngokufezekileyo.

Kunyaka-mali ka-2006/2007 inkcitho yesebe ibe ngaphantsi kangangezigidi ezili-R195. Umthamo omkhulu wesi sixa singasebenzanga ube ngenxa yemibandela yezemisebenzi engaqunjelwanga ngokukazwelonke liBhunga lezoBudlelane laBasebenzi leMfundo (*Education Labour Relations Council*). Ngenxa yoku, kuye kwanyanzeleka ukuba kucelwe imvume kuSozimali kazwelonke yokuba esi sixa semali sisetyenziswe kunyaka-mali olandelayo. Inxalenye yale mali ingasebenzisekanga ngendlela eyayicetyiwe yayiyeyeziseko zokusebenza nalapho iibhodi zoLawulo-zikolo zazibandakanyeka elwakhiweni lwamagumbi awongezelekileyo, iiforam, njl. njl. ophethwe unyaka zingagqitywanga. Le mali ingasetyenziswanga iyonke ingumyinge oziipesenti ezi-2.7% kuhlalo-lwabiwo-mali olwalungelelwaniswayo.

Uweliso-mali

Olu lwabiwo-mali lwezintlu ezingundoqo zale Voti zaye zamkelwa licandelo likaNondyebo lePhondo:

Ushenxiso lwesixa-mali esi-R132,000 kwinkqubo 7 isisiwa kwinkqubo 3 ngenxa yokwanda kwamanani abafundi ezikolweni ezizimeleyo.

Ushenxiso lwesixa-mali esingama-R2,234,000 kwiNkqubo 2 isisiwa kwiNkqubo 4 ngenxa yenkqubo yofezekiso lonyuso-mivuzo yeenqununu zezikolo.

ISEBE LEMFUNDO LENTSHONA KOLONI VOTI 5

INGXELO YEGOSA ELINIKA INKCAZA yonyaka ophele ngowama-31 Matshi 2007

Ushenxiso lwesixa-mali esingangama-R838,000 kwiNkqubo 2 isisiwa kwiNkqubo 4 ngenxa yokunyuka kweerhafu zokusetyenziswa kwezithuthi zikarhulumente.

Ushenxiso lwesixa-mali esizizigidi ezi- R4,606,000 kwiNkqubo 7 isisiwa kwiNkqubo 5 ukuze kuthengwe isakhiwo esitsha sokusetyenziswa njengekholeji yabucala yemfundo enabileyo noqeqesho (FET). Isakhiwo esi sixabise izigidi ezi-R5,800,000.

Ushenxiso lwesixa esingangesigidi-R1,916,000 kwiNkqubo 7 isisiwa kwiNkqubo 5 luhamba ngolu hlobo: Isixa-mali esingangesigidi- R1,194,000 sokuxhasa inxalenye yesikhululo semfundo esi i-FET kunye nesixa esingama-R722,000, sokuxhasa ezinye iikholeji zemfundo noqeqesho olunabileyo ukuvuselela inkqubo yokusebenza kwazo.

Ingxelo ngenkqubo yosetyenziso-zimali

Ingxelo ngenkqubo yosetyenziso-zimali izalwa zizinto eziliqela eziqhutywe kunyaka-mali ophethwe ngowama-31 Matshi 2007.

Ingxelo yeGosa lezezimali

Ingxelo yeGosa lezezimali elungiselelwe isiGqeba esilawulayo neNdlu yoWiso-mthetho yePhondo yeRiphabliki yoMzantsi Afrika.

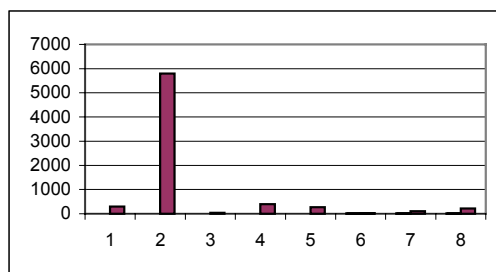
Ushenxiso lwesixa-mali esingangesigidi-R1,916,000 kwiNkqubo 7 esisiwa kwiNkqubo 5 luhamba ngolu hlobo: Isixa esingangesigidi-R1,194,000 sokuxhasa inxalenye yesikhululo semfundo esi i-FET kunye nesixa esingama-R722,000, sokuxhasa ezinye iikholeji zemfundo noqeqesho olunabileyo ukuvuselela inkqubo yokusebenza kwazo.

Ingxelo ngenkqubo yosetyenziso-zimali

Ingxelo ngenkqubo yosetyenziso zimali izalwa zizinto eziliqela eziqhutywe kunyaka-mali ophethwe ngowama-31 Matshi 2007.

Ulwahlulo lwezixa-mali (Rm) ngokwenkqubo nganye

1	Ezolawulo	293	4%
2	Imfundo yezikolo zikarhulumente zesiqhelo	5,793	81%
3	Inkxaso-mali yezikolo ezizimeleyo	34	0%
4	Imfundo yezikolo zikarhulumente ezizodwa	389	6%
5	Iikholeji zemfundo enabileyo noqeqesho	271	4%
6	Imfundo yabadala noqeqesho	24	0%
7	Uphuhliso lwabasagala isikolo	101	1%
8	Iinkonzo ezincedisayo nezayamene nazo	211	3%
		<u>7,116</u>	<u>100%</u>



Inkqubo 1 ibandakanya uLawulo lwabasebenzi nezimali, abaphathi abaphezulu, iofisi yomphathiswa, uphuhliso lwekharithulamu, ubucukubhede bezekhompyutha, imfundo ngamajelo omoya, ulawulo lwezakhiwo kunye nolawulo lwezikolo ezineemfundo ezizodwa. Inkqubo 2 ukuya ku-7 zimele izibakala eziliqela ezahlukeneyo zamaziko ezemfundo yaye zithatha umyinge ongama-93 eepesenti enkitho yeSebe lezemfundo lePhondo iNtshona Koloni iyonke. Ulawulo lwezikolo nophuhliso lwamaziko lubandakanyiwe kwiNkqubo 2. Inkqubo 8 ibandakanya ulawulo lweemviwo, inkxaso-mali *karhulumente* enemiqathango (HIV/AIDS, ulawulo lwezimali nophuhliso lomgangatho) kunye neKapa eliHlumayo.

**ISEBE LEMFUNDO LENTSHONA KOLONI
VOTI 5**

**INGXELO YEGOSA ELINIKA INKCAZA
yonyaka ophele ngowama-31 Matshi 2007**

2. Iinkonzo ezibonelelwa lisebe

2.1 Umgaqo-nkqubo werhafu

Isebe liyazibonelela iinkonzo ezineerhafu ezithile ezimayela neemviwo ezimiselwe liSebe lezeMfundo likaZwelonke.

2.2 Iinkonzo ezifumaneka simahla

Isebe aliziboneleli simahla iinkonzo ebezinokuba nengeniso.

3. Imiceli-mngeni elunqongophalo lwezakhono

Nangona liziphumeza izicwangciso zalo ezininzi isebe, kambe ihlala ikho imiceli-mngeni elijamelana nayo nanjengokuba ubume besebe bungalungelelaniswanga ngokufanelekileyo ukuze likwazi ukumelana nayo ngokufezekileyo. Kambe ucwangciso-kutsha kwesebe kuthenjwa ukuba luza kuyisombulula le ngxaki.

Mceli-mngeni wumbi olizinyo eliaqambayo, luvingco-zithuba ngabahlohli abafanelekileyo bezibalo nenzululwazi ezikolweni. Ukukhawulelana nalo mceli-mngeni kwixa elizayo, isebe lizikhuphe lazithulula iibhasari.

Izikhundla ezingekavingcwa kundlunkulu, ngakumbi kumacandelo ezifundo anjengalawo angolawulo lwezabasebenzi, ulawulo lwezinto ezithengwayo kunye noqulunqo-zincwadi zemali, kungumba ohlala uwudla umzi lo. Kambe zikho iintshukumo zokulungisa oku ezibandakanya amanyathelo anjengoqeqesho lwabasezikhundleni kungokunje nophononongo-kutsha lwezikhundla, oko kuyinxalenye yesicwangciso sokulungiselela abasebenzi abasele bengaphakathi ukuze bangene ezikhundleni ezitsha.

4. Usetyenziso loncedo-zimali

Akukho luncedo ngazimali lukhe lwalufumana isebe ukongeza engxoweni yalo.

5. Iziseko zorhwebo neziseko zoluntu

Isebe alinayo nanye kwezi.

6. Imibutho namaziko ahlawuliweyo

Isebe linamaziko amalunga ne-1900 elihlala linotshintshiselwano nawo ngemali.

Xa kusenziswa intlawulo okanye utshintshiselwano oluthile ngemali kulandwela inkqubo eyamkelekileyo emiselwe kwicandelo 38(i) yoMthetho wezoLawulo lwezimali zikarhulumente obizwa ngokuba yiPublic Financial Management Act (PFMA). Kumaxa amaninzi, kuye kudingeke ukuba amaziko lawo angenise iingxelo-zimali eziphicothwe ngokusesikweni ngabaphicothi-zimali ukuqinisekisa ukuba bezilandela imimiselo nemiqathango.

7. Iindibaniselwano phakathi kukarhulumente namashishini azimeleyo (PPP)

Kulo nyaka uphononongwayo akukho zindibaniselwano bezimiselwe.

**ISEBE LEMFUNDO LENTSHONA KOLONI
VOTI 5**

**INGXELO YEGOSA ELINIKA INKCAZA
yonyaka ophele ngowama-31 Matshi 2007**

8. Amalungiselelo olawulo olucikizekileyo

Imimiselo yeofisi kaNondyebo yiyo egqiba ngoseko lwenkqubo esekeleze ukuqwalasela umngcipheko kuphicotho-zincwadi zemali zangaphakathi. Le ndlela yokwenza ihambelana ncakasana nengxelo yesibini kaKing (II).

Inkqubo esekeleze ukuqwalasela umngcipheko idinga yonke imingcipheko engundoqo kodwa ingaphelelanga kwimibandela ejongene nokusebenza kunye neyocwangciso.

Umsebenzi wophicotho-zincwadi lwangaphakathi wenziwa yiofisi kaNondyebo wePhondo encediswa yinkampani yangaphandle, iSihluma *Sonke* Consortium. Bekunye banikwe umsebenzi wokuhlola umngcipheko kunyaka-mali ka-2005/2006, ngelixa kuphononongwa nalo ka-2006/2007.

Isebe linekomiti yophononongo zincwadi enamalungu azimeleyo, Sithethanje ikunyaka wayo wesithathu isebenza. Le komiti ihlangana njalo iqulunqe imibandela tafileni-nye nabajongene nezolawulo. Uphicotho zincwadi lwangaphakathi luyinika iKomiti yoPhicotho zincwadi ngqo ingxelo yalo.

Isebe liseke iYunithi yoHlobo lwemingcipheko, iRisk Assessment Unit, ngokuhambelana neemfuno zeofisi kaNoNdyabo. Omnye wemisebenzi yayo engundoqo kukusungula, imisele isicwangciso soMgaqo-nkqubo wemingcipheko (Risk Policy) sisebenzisana neofisi kaNondyebo wePhondo. Umgagqo-nkqubo wemingcipheko uza kuzala uMgaqo-nkqubo woHlobo lwemingcipheko yobuqhetseba. Nangona ungekabikho lo mgagqonkqubo, isebe linaso isicwangciso sothintelo lobuqhetseba jikelele, phofu esingazi kwahluka ngokutheni naxa sele isicwangciso sohlolo lwemingcipheko siqulunqwe sagqitywa.

Abaphathi abaphezulu kufuneka ukuba bagqibezele ze bangenise isibhengezo esichaza ukuba akukho ngquzulwano kwimicimbi yabo nyaka nonyaka. Onke amalungu ekomiti engenisa iithenda naba bonke abasebenzi abakwiofisi ekhupha iithenda kufuneka ukuba bazichaze ukuba abanamdla kwizinto zesebe. Isebe likwacele uncedo lweArhente yezoBuntlola yeSizwe ukuba iqinisekise ukuba bonke abaphathi ababandakanyekayo kumcimbi ololu hlobo bacocekile, ngokunjalo nabanye abasebenzi jikelele phofu.

9. Imicimbi erhoxisiweyo/imicimbi eza kurhoxiswa

Ayikho

10. Imicimbi emitsha/ephakanyisiweyo

Ayikho

11. Ulawulo lwezinto ezilixabiso

Irejista yezinto ezilixabiso ilawulwa yimiqathango kaNoNdyabo weSizwe. Uqinisekiso losulungeko lwezinto ezilixabiso zeSebe lwenziwa ngumboneleli-nkonzo onobuchule wangaphandle ozimeleyo. Laphuma phambili iSebe ngoba kwafunyaniswa ukuba laziphumeza zonke iinkalo eziphambili elalisekeleze kuzo ngokuthiwe thaca kwinkqubo engeenguqu kulawulo lwezinto ezilixabiso ezibizwa ngokuba yiAsset Management Reforms.

**ISEBE LEMFUNDO LENTSHONA KOLONI
VOTI 5**

**INGXELO YEGOSA ELINIKA INKCAZA
yonyaka ophele ngowama-31 Matshi 2007**

12. Ugqithiselo lwezimali zolawulo lwangaphambili (*Mopping up*)

Ulawulo lwePhondo leNtshona Koloni lwafumana ilifa lamatyala amadala orhulumente wangaphambili awaqala phambi konyaka-mali ka-1994/1995. Ukunatyiswa kwemisebenzi yeSebe lezemali (FMS Department 70) langaphambili lazala la matyala angaka angekahlawulwa ebandakanya inkcitho engagunyaziswanga ekufuneke ukuba isasazelwe kwamanye amasebe. Unondyebo wePhondo leNtshona Koloni kungokunje usezingxoxweni noNondyebo weSizwe ukuleqisa uqulunqo nopasiso lomthetho ofanelekileyo oza kubonelela ngemali ukucima amatyala ale nkcitho yayingagunyaziswanga nanjengokuba la matyala emadala enziwa ngexesha lolawulo lwangaphambili lwePhondo leKoloni yaye ngoko kwakusekho neNdlu yaBameli newela phantsi kweofisi kaNondyebo weSizwe.

13. Izigaba emva kosuku lwengxelo esesikweni

Umthetho wezemali weakhawunti ebizwa ngokuba yiStores Requisition Account wavunywa wapasiswa yiKhabhinethi kulo nyaka-mali umiyo. Sisaphononongwa isixa-mali esizizigidi ezingama-R26 ekujongwe ukuba singajongana nokusombulula le ngxaki.

14. Ulwazi ngenkqubo yokusebenza

Isicwangciso soonyaka-mali 2007/08 ukuya ku-2009/10 esivunyiweyo, sineenjongo ezinatyisiweyo, sangeniswa kwiNdlu yoWiso-mthetho yePhondo. Ulwazi lwenkqubo yokusebenza nophononongo lwenziwa qho ngekota yaye kuhamba ngokwesicwangciso esimiselweyo.

Icandelo elijongene noqinisekiso lomgangatho elibizwa ngokuba yiDirectorate Quality Assurance lijongene nokuqinisekisa ubunyani bedatha engqinisiweyo ukuhlola iinkqubo zokusebenza. Ezi nquleqhu zohlobo zinqanda konke okubandakanyekayo kwizenzo zobuqhetseba okanye zinceda ukuphawula kwangethuba konke okungafanelekanga noko kufanelekileyo kwingxelo yenkqubo yokusebenza. Oku kubalulekile ukuze kuqinisekiswa ukuba inkqubo yokusebenza ingeniswe ngokuchanekileyo nangokupheleleyo.

Kukho iinkqubo ezisebenzayo ezibizwa ngokuba yiCentral Education Management Information System (CEMIS) zokubonelela ngolwazi ngomfundi ngamnye, iPersal ukubonelela iinombolo zabasebenzi kunye ne-BAS ukunika ingxelo yenkcitho.

15. Izindululo ze SCOPA

Ireferensi kwingxelo yangaphambili yomphicothi-zincwadi zemali nezindululo zeScopa	Umxholo	Ingxelo zokufunyanisiweyo ziyaqhuba
Isindululo 1: Ingxelo yophicotho-zincwadi 2004 Umhlathi 5.4(ii)	Inkcitho engagunyazwanga: Inkcitho yenkqubo yokufunda 1991/92- R21.949 izigidi nenkcitho engaphezulu kwelindelekileyo yolawulo lwangaphambili: iNdlu yaBameli 1995/96- R10.707 izigidi	Ikomiti iphakamise ukuba i-WCED noNondyebo wePhondo baphinde bangenise iziphakamiso kuNondyebo weSizwe ukuleqisa lombandela.
Ingxelo yesine: SCOPA, Umhlathi 7.1	Utyalo-mali kwiziseko ezingundoqo zokusebenza	I-WCED yamkela iziphakamiso zekomiti ze iphumeze iinkqubo zokujongana nokusombulula namaxhala ekomiti.

**ISEBE LEMFUNDO LENTSHONA KOLONI
VOTI 5**

**INGXELO YEGOSA ELINIKA INKCAZA
yonyaka ophele ngowama-31 Matshi 2007**

Ireferensi kwingxelo yangaphambili yomphicothi-zincwadi zemali nezindululo zeScopa	Umxholo	Ingxelo zokufunyanisiweyo ziyaqhuba
Ingxelo yesine: SCOPA, Umhlathi 7.2	HIV/AIDS	I-WCED yamkela iziphakamiso zekomiti ze iphumeze iinkqubo zokujongana nokusombulula namaxhala ekomiti.
Ingxelo yesine: SCOPA, Umhlathi 9.2	Imilinganiselo yokusebenza	Amaxhala ekomiti aqatshelwe. I-WCED ithobela imiqathango kaNoNdyabo yendlela yokungenisa iingxelo yaye inenkqubo eyodwa yolawulo nophononongo lolwazi olungeniswayo nemigangatho elawulayo.
Ingxelo yesine: SCOPA, Umhlathi 9.3	Ulawulo lweeasethi	Iziphakamiso ziqatshelwe yaye i-WCED iqinisekise ukuba iziphakamiso ezo ziphunyeziwe.

Ulwamkelo ngokusesikweni

Iingxelo zosetyenziso-zimali noNyaka ezandlalwe ukususela kwiphepha le-14 ukuya kwelama-63 zamkelwe ngokusesikweni liGosa locwangciso-zincwadi zemali.



**RB Swartz
IGOSA ELINIKA INKCAZA
UMHLA: 31 MEYI 2007**

IPHEPHA ELILANDULAYO

Olu xwebhu lophicotho, luxwebhu oluguqulweyo oluyikopi yoxwebhu lophicotho olwatyikitywa lwaza lwamkelwa, kwaye I-Ofisi yo Mphicothi-Jikelele ayinakubekwa butyala xa kuthe kwafumaniseka ukuba akuguqulwanga ngokuchanekileyo xa bekuguqulwa.



AUDITOR - GENERAL

INGXELO YOMPHICOTHI-NCWADI ZEMALI JIKELELE NGEENGXELO ZEZIMALI ZIKARHULUMENTE WEPHONDO LENTSHONA KOLONI KUNYE NENKQUBO YOKUSEBENZA KWEVOTI 5 YOLWABIWO-MALI-KWISEBE LEMFUNDO LENTSHONA KOLONI LONYAKA-MALI OPHELE NGOMHLA WAMA-31 MATSHI 2007

INGXELO YEZIMALI

Intshayelelo

1. Ndiziphicothile iingxelo zezimali zeSebe lezeMfundo leNtshona Koloni (WCED) ezibandakanya ingxelo ngobume bezimali ukuza kuthi ga kumhla wama-31 Matshi ka2007, ingxelo yolwabiwo-mali, ingxelo ngotshintsho lweeasethi zizonke zonyaka-mali lo, ngokunjalo nengxelo eshwankathelweyo yemigaqo-nkqubo yophicotho-zimali ebalulekileyo namanye amaqaku akhaphayo aqulathe iingcaciso ezithile, njengoko zithiwe thaca kwiphepha le-14 ukuya kuthi ga kwelama-63.

Olu luxanduva lwegosa lophicotho-zimali ngokuphathelene neengxelo zezimali

2. Igosa eliphicotha izimali linoxanduva lokulungisa nokuthi thaca ngaphambili ezi ngxelo lilandela imiqathango emiselwe yiofisi kaNondyebo weSizwe zandlalwe kumgaqo-nkqubo wophicotho-zimali 1.1 nangendlela engummiselo oqulethwe kuMthetho woLawulo lwezimali zikaRhulumente obizwa ngokuba yiPublic Finance Management Act, ka-1999 (Act Nomb.1 ka 1999) (PFMA). Olu xanduva luquka oku kulandelayo:
 - Udizayino, uphunyezo nolondolozo lwezinto ngaphakathi oludingeka kulungiso nothiwo thaca lweengxelo zezimali ezingaphekanga yaye nokuba oko kunokuba kwenzeke ngempazamo akwamkelekile.
 - Ukhetho nosetyenziso lwemigaqo-nkqubo efanelekileyo yophicotho-zincwadi-zemali
 - Uqikelelo olufanelekileyo ngokweemeko.

Okuluxanduva lweGosa-jikelele lophicotho-ncwadi-zemali

3. Ngokweemfuno zecandelo 188 zoMgaqo-siseko weRiphabliki yoMzantsi Afrika ka-1996 ngokunxamnye necandelo 4 loMthetho wezoPhicotho-zincwadi-zemali zikaRhulumente obizwa ngokuba yi Public Audit Act ka-2004 (Act Nomb.25 ka-2004) kunye necandelo 40(2) le-PFMA, uxanduva lwam kukuvakalisa uluvo ngezi ngxelo zezimali ngokophicotho lwam.
4. Uphicotho lwam ndiluhube ngokwemigangatho emiselweyo yehlabathi yophicotho-zincwadi-zemali *phantsi kwesaziso-jikelele*, iGeneral Notice 647 ka2007, esabhengezwa kwiGazethi kaRhulumente Nomb.29919 kaMeyi 25 2007. Loo migangatho ifuna ukuba ndilandele iimfuno nemiqathango yobunyulu yaye ndicebe ndakugqiba ndiphumeze uphicotho ukuze ndifumane ingqiniseko yokuba ingaba iingxelo ezi zezimali aziphekanga na.
5. Uphicotho-zincwadi zemali lubandakanya iinkqubo ezithile zokusebenza ezenza ukuba ufumane ubungqina beemali ezisetyenzisiweyo nezixeliweyo kwiingxelo zezimali. Iinkqubo ezo zokuphicotha zixhomekeka kumphicothi-ncwadi zemali, oko kudibene nokuhlolwa kwemingcipheko malunga nophiko lweencwadi neengxelo, ngobuqhetseba okanye nokuba kungempazamo. Ekuhloleni loo mingcipheko, umphicothi-zincwadi zemali yena uphonononga ingxelo yangaphakathi elungiselela ukudizayina iinkqubo ezifanelekileyo kwiimeko ezivelayo, kodwa kungabi ngasizathu sakunika luvo ngenkqubo yokuqulunqa iingxelo yangaphakathi.

6. Uphicotho-zincwadi zemali luquka uphononongo loku kulandelayo:
 - Ufaneleko lwemigaqo-nkqubo yocwangciso-zincwadi esetyenziswayo
 - Ufaneleko loqikelelo olwenziwa ngabaphathi
 - Unikezelo lweengxelo zezimali lulonke.
7. Ndiyakholwa ukuba ubungqina endibufumeneyo banele yaye bundinike isiseko sophicotho lwam ngokufanelekileyo.

Isiseko socwangciso-zincwadi zemali

8. Umgqaqo-nkqubo wesebe uthi makulungiswe iingxelo zezimali ngokuqulunqwe yiofisi kaNoNdyabo weSizwe njengoko zibekiwe kwisaziso somgaqo-nkqubo 1.1 seengxelo zezimali.
9. Iigaranti zemali-mboleko yezindlu

Isebe belingenazo iinkqubo ezimiseliweyo zocwangciso nezolawulo unyaka lo ukuqinisekisa ubukho beegaranti nokunyaniseka kweemali-mboleko zezindlu. Ngomhla we-19 kuJanyuwari 2007 isebe lathumela iincwadi zegaranti ezingaphezulu kweminyaka emihlanu(5) emazikweni abolekisa ngemali achaphazelekayo zaza eziseleyo zathunyelwa ngomhla wesixhenxe (7) kuJuni 2007. Le nkqubo yadala ukuba ezinye iigaranti zilungelelaniswe zisusela kwisixa esizizigidi ezili-R100 ukuhla ziye kwezingama-R65 kwiingxelo zezimali. Nanjengokuba uninzi lweegaranti lwaqinisekiswa kuphela ukususela kumhla wesixhenxe (7) kuJuni 2007 ukuya phambili ngamaziko ezimali achaphazelekayo, esi sixa sehle kakhulu saya kuthi xhaxhe kwizigidi ezingama-R25 embindini ka-Agasti 2007 yaye zisekho nezinye iimali eziza kukhululwa ngokwenkqubo le. Nangona uninzi lwezi mali zikhululwayo emva konyaka-mali zixhomekeke kumhla eqinisekise ngawo igaranti ibhanki, isampulu yezinye ikhombisa ukuba kwezinye iimeko iigaranti zakhutshwa phambi okanye zazingaphunyezwa ngomhla wama-31 Matshi 2007, ngoko ke iigaranti zemali-mboleko yezindlu zinikwe imali engasekelwanga ntweni.

Uluvo oluqinisekisiweyo

10. Ngokoluvo lwam, ngaphandle kwefuthe lombandela ochazwe kumhlathi ochazwe njengowoluvo oluqinisekisiweyo, iingxelo zezimali noko zibonisa imeko ecacileyo, kuzo zonke izibakala, zosetyenziso lwemali ngokutyhilekileyo kweSebe lezeMfundo leNtshona Koloni kumhla wama-31 Matshi 2007 ngokuhambelanayo nemimiselo nemiqathango yocwangciso-zincwadi zemali ezamisela nguNondyabo weSizwe nangokuthiwe thaca kwisaziso 1.1 nangokumiselwe nguMthetho i-PFMA.

Ubethelelo lwemiba

Manditsale umdla wenu ndiwujongise kule miba ilandelayo:

Umba ophambili ochaphazela iingxelo zezimali

11. Uthelekiso

Uphicotho-zincwadi zemali zonyaka-mali odlulileyo zalandulwa ngenxa yokuba imida yesikowuphu sokusebenza yayinyiniwe yaza ayabi nakusonjululwa loo nto. Alwenziwanga utholekiso olufanelekileyo lweengxelo zezimali lwalo nyaka-mali. Olo lonyaka-mali odlulileyo olwalandulwayo lubandakanya imbuyekezo yabasebenzi, ukongezwa kweeadethi eziqingqiweyo, amalungiselelo amatyala angahlawulekiyo, iziqinisekiso, iigaranti zemali-mboleko yezindlu kunye nezinye iindleko.

IMIBA ENGEMINYE

Mandijolise umdla wenu kule miba ilandelayo isecaleni kuleyo ikuxanduva lwam kuphicotho-zincwadi zeengxelo zezimali:

Ukungathobeli umthetho ofanelekileyo

12. Iintlawulo

Kwasibhozo amaziko abandakanywe kwisampulu yophicotho-zincwadi zemali, akukho siqinisekiso sibhaliweyo sakuba ezo zinto zihlawulelweyo zenze utshintsho kufezekiso, ucikideko nobunyulu bolawulo lwezimali ngokunjalo nemicimbi yolawulo ngokwemimiselo yecandelo 38(1)(j) loMthetho i- PFMA.

Izilungiso ezibonakalayo ezenziwe kwiingxelo zezimali ebezifakelwe ukuze ziphicothwe

13. Iingxelo zezimali ezamkelwe ligosa lobalo-mali njengoko bezingeniselwe ukuphicothwa ngomhla wama-31 Meyi 2007 zitshintshwe kakhulu ngenxa yezi mpazamo zibonwe ngoku beziphicothwa:

- izibophelelo zezivumelwano zokulungisa ezixabisa ama-31 ezigidi zerandi ebezingachazwanga kwiingxelo echazayo, okubangele ukuba zingachazwa zonke izibophelelo.
- iziqinisekiso zemali-mboleko yezindlu ezikhutshiweyo okanye nezingekhoyo ezingama-35 ezigidi zerandi zibandakanyiwe kwimali-ntsalela yangomhla wama-31 Matshi 2007, oku kubangele ukuba amanqakwana ongezelelweyo okuchaza amatyala alalelisiweyo abaxe.

Ixabiso lemibandela yezemali

14. Isicwangciso sabasebenzi

Isebe liyile isicwangciso sabasebenzi somnyaka-mali u-2006-07. Kodwa, olu yilo lwesicwangciso sabasebenzi zange lide livunywe njengoko iSebe lezeNkonzo zoLuntu noLawulo zisigqibezele isikhokelo sesicwangciso sabasebenzi kuphela ngoSeptemba 2006. Ilinge elibhalwe ngokutsha lesicwangciso sabaSebenzi neminye imigaqo-nkqubo efana naso zibonakalisa ukuba la manqanaba alinganiselweyo ngokoMthetho weeNkonzo zikaRhulumente, 2001 (Icandelo III D) khange zichatshazelwe.:

- Ukuhlalutya umsantsa ukuhlola umahluko phakathi kwabantu abasebenzayo abakhoyo nabafunekayo.
- Izicwangciso-qhinga nezicwangciso zokulungiselela ukufikelela kwiinjongo ezimiseliweyo zenkqubo yokulungelelanisa.
- Iziphumo nezicwangciso-qhinga ngokweendleko ukulungisa umsantsa okhoyo phakathi kwabasebenzi abakhoyo nabafunekayo.
- Ukuvavanya iimfuno zoqeqesho, inani elinokuqeshwa, izakhono nobuchule babasebenzi abakhoyo.

15. Izithuba

Uphando luqhutyiwe ukuqwalasela ukuba ingaba inani lezithuba ezikhoyo kwisebe likwizinga elamkelekileyo na lesihlanu ekhulwini njengoko kumiselewe sisicwangciso-nkqubo sezeMali seSizwe samanyathelo asisiqhelo kulawulo lwezemali (isicwangciso-nkqubo sezeMali zeSizwe). Ngenxa yokungabikho kolwazi ukuze kwazeke ubungakanani bezithuba ezikhoyo zootitshala, uphando lujolise kubasebenzi beenkonzo zikarhulumente kuphela. Kuye kwaqinisekiswa ukuba ukusuka ngomhla wama-31 Matshi 2007 izithuba ezikhoyo kwisebe li-12%, inani elo lingaphezulu kwisihlanu ekhulwini esimiselweyo. Kukhona ukulibaliziseka phakathi komhla esivela ngawo isithuba kunye nokupapashwa kweso sithuba. Ukuhluzwa kwabafake izicelo nokude kuqeshwe emva kokuba usuku lokufaka izicelo lugqithile nako kwakungagqitywa ngexesha.

Kuye kwakhona kwaqinisekiswa ukuba ama-886 (79%) e-1 123 yezithuba ezingenamntu zihleli zingenamntu isithuba esingaphezulu kweenyanga ezintathu esasimiseliwe njengexesha elamkelekileyo kwisicwangciso sesebe lezemali lesizwe. Isithuba esingenamntu sihlala iinyanga ezingama-27 xa sithelekiswa.

16. Umgangatho wemfundo namava ootitshala

Isebe alinalo uluhlu lweenkcukacha-lwazi olunezakhono, ubuchule, amava, emfundo ephunyelelweyo noqeqesho. Oku kube neziphumo ezibi kwisebe ukuba likwazi ukuhlalutya ootitshala abafunekayo nabakhoyo kunye nokuvavanya izidingo kuqeqesho, izakhono nobuchule.

Laqhutywa uphando ngomgangatho wemfundo namava ootitshala abaqeshwe yi-WCED nabafundisa kwizikolo zamabanga aphakamileyo kummandla wokufunda iMathematika nezeNzululwazi kwibanga 12. Injongo yolu phando yayikukubona ukuba kukhona na ukuhambelana phakathi komgangatho wemfundo namava ootitshala abaqeshiweyo kunye nomgangatho wemfundo ebantwaneni njengoko kubonakala kwizinga lokuphemelela iimviwo zika-2006 zebanga 12 kubafundi.

Ipesenti yootitshala abangenamfundo yasesikolweni okanye eyodwa ibiphezulu kwizikolo esinamazinga okuphumelela aphantsi kuneyezikolo ezibe neziphumo ezihle kwiimviwo zebanga 12 kwiMathematika nezeNzululwazi ngo-2006.

17. Izixhobo ezinge-HIV/AIDS zokuncedisa abafundi nootitshala ezigqithisileyo ezithengwe ngonyaka-mali 2005-06.

Kwingxelo yethu yophicotho-zincwadi kuvakale ukuba unyaka-mali 2005-06 isebe li-odole ii-LTSM ze-HIV/AIDS ezigqithisileyo ngo-2006 kwaye nokuba izikhokelo zikatitshala zamabanga elokuqala ukuya kwelesixhenxe ezingama-152 591, eziqikelelwa ukuba zixabise ama-872 821 zazisekhona, ngokwengxelo yenyanga ka-Apreli 2006 yeziko lokwaba izixhobo eliseValkenberg. Ngokwengxelo yenyanga ka-Apreli 2007, izikhokelo zikatitshala ezingama-142 882 ezixabisa ama-R834 443 zazishiyekileyo ekupheleni kuka-Apreli 2007.

Ngokwengxelo yesebe ngomhla we-15 Juni 2007 babexakekile behambisa izikhokelo zikatitshala ezingama-28 000 kwiSebe lezeMfundo laseFreysitatha. Uninzi lwezikhokelo zikatitshala ziza kushiyeke kwiziko lokuhambisa izixhobo eliseValkenberg, oku kuqikelelwa ukuba kuyimali efikelela kuma-R674 385 (izikhokela zikatitshala ezingama-117 882 ezixabisa i-R5 72 sisinye) ethathwa njengenkitho engenankatho nelahliweyo ngokomhlathi 38(1)(ii) no-(g) we-PFMA.

18. Uqeqesho nge-HIV/Aids lootitshala bezikolo zamabanga aphakamileyo

Isebe alifikelelanga kobe lizimisele kuko ngokuqeqesha ootitshala ngonyaka-mali u-2006-07 njengoko kucacisiwe kwisiCwangciso seNkqubo se-HIV/Aids sika-2006-07. Nangona isebe belizimisele ukuqeqesha ootitshala beziFundo ngezoBomi bamabanga esibhozo nelesithoba abangama-500, ngootitshala abali-104 (21%) kuphela abaqeqeshiweyo. Ngaphezu koko, bekumiselwe ukuba ootitshala abangama-400 bamabanga 10 nele-11 beziFundo ngezoBomi baza kuqeqeshwa kodwa isebe likwazi ukuqeqesha ootitshala abangama-360 (90%) kuphela. Amanani abemiselwe ootitshala bamabanga aphakamileyo ababeza kuqeqeshwa nge-HIV/Aids khange kufikelelwe kuwo ngenxa yoqeqesho olufunwayo ngokwekharithulam yesizwe ekhetha uqeqesho lootitshala nge-HIV/Aids. Okunye kukuba umgaqo-nkqubo wesebe awubavumeli ootitshala ukuba baye kuqeqesho ngexesha lesikolo.

19. Uqeqesho ngonakekelo nokuxhasa

Inkqubo ye-HIV/Aids yokunakekela nokuncedisa ibingekasebenzi, nangona kwakuthiwe ngaphambili iza kuqaliswa kwikota yesithathu ka-2006. Isizathu sokulibaziseka ekuphunyezweni kwenkqubo ye-HIV/Aids yokunakekelana nokuncedisana kukuba izixhobo zokuncedisa kuyo zazingekagqitywa.

Injongo yenkqubo yokunakekela nokunceda kukwenza ukuba izikolo zibe lulutho kuluntu noluntu ngokunjalo, ukuze kuliwe iingxaki zesikolo nentlalo zizonke ukuqinisekisa ukuba kukho iinkonzo zoonontlalontle zokucebisa abafundi, nokuqaliswa kwamaqelisa okuxhasana esithili kunye namaqela asesikolweni okuncedisa ootitshala.

20. Ukulawulwa nokuvavanya inkqubo ye-HIV/Aids

Isebe zange lijonge liqoqoshe ukusetyenziswa kwenkqubo ye-HIV/Aids kwizikolo ezikummandla we-West Coast/Winelands njengoko izikolo ezingamashumi amane ekhulwini zingazange zindwendwelwe ngabaququzeleli okanye abasebenzi abahamba-hambayo be-HIV/Aids nokuba kukanye ngonyaka ka-1996.

21. Ukuphucula iziseko zophuhliso

Kumhlathi 6.5.1(b)(iii) wengxelo yophicotho-zincwadi kwaziswa ukuba izivumelwano ezibini zonikezelo maxabiso, ithenda, zamaphulo eziseko zophuhliso zacinywa njengoko umnikazi wazo wayengenabasebenzi boneleleyo bokwenza ezi projekthi ngempumelelo. ISebe lemiSebenzi yoLuntu nezoThutho ngenyanga ka-Agasti 2005 liqikelele ukuba ilahleko ngokucinywa kwezi zivumelwano zibini ingafikelela kwi-12 lezigidi zerandi nokuba imali echanekileyo iyakwaziwa emva kokuba kugqityiwe ukubalwa kokugqibela kwezivumelwano zicinyiweyo kunye nezo zitsha seziyigqibile iprojekthi. Ezi projekthi zimbini zagqitywa. Kodwa, ngoJulayi 2007, bekungekagqitywa ukubalwa kokugqibela kwaye nelahleko iyonke ngenxa yokucinywa/rhoxiswa kwezivumelwano ibingekafumaneki.

Ulawulo lwangaphakathi

22. Imeko yokulawula

Isebe zange lize neentsika eziphambili zemeko yolawulo ukuqinisekisa ukuthotyelwa kwemithetho nemigaqo. Oku kungqinwa yimiba eziswa ngaphambili yokungathotyelwa kwemithetho.

23. Imisebenzi yokulawula

Ifuthe lemisebenzi yokulawula kwisebe nokwinkqubo zokucacisa alonelanga. Oku kungqinwa yimiba eziswa ngaphambili yeziqinisekiso zemali-mboleko yezindlu, ukuzibophelela naxa kuthelekiswa.

Ukulibaziseka ekugqityezelweni kophicotho-ncwadi

24. Ngenxa yogwayimbo labasebenzi bakarhulumenye ngenyanga kaJuni 2007, uMphicothi-zincwadi Jikelele kuye kwanyanzeleka ukuba akulibazise ukugqibezela iingxelo zamasebe achaphezelekayo. Ngenxa yoko, inkqubo yokuphonononga ukujonga ukuhambelana kwiingxelo zophicotho-zincwadi nguMphicothi-zincwadi Jikelele iqhutywe kuphela emva komhla wama-31 Julayi 2007, oko kubangele ukulibaziseka kokugqityezelwa kophico-zincwadi zeli sebe zomnyaka-mali 2006-07.

EMINYE IMISEBENZI YOKUNIKA IINGXELO

Ukunika ingxelo ngolwazi lwenkqubo

25. Ndiluphicothile ulwazi lwenkqubo njengoko kumiselwe kwiCandelo 2

Umsebenzi wegosa lezobalo-mali

26. Igosa lezobalo-mali linomthwalo owongezelekileyo njengoko kumiselwe kwicandelo 40(3)(a) le-PFMA ukuqinisekisa ukuba ingxelo yonyaka neengxelo-maphepha zezimali eziphicothiweyo zibonakalisa inkqubo ngokukuko ithelekiswa neenjongo ebezimiselwe kwangaphambili zesebe.

Umsebenzi woMphicothi-zincwadi Jikelele

27. Ndiwuqhube umsebenzi wam ngokwecandelo 13 loMthetho woPhicotho-zincwadi zikaRhulumente, 2004 (uMthetho uNombolo 25 ka-2004) ofundwa neSaziso Jikelele 646 si2007, esikhutshwe kwiGazethi kaRhulumente uNombolo 29919 yama-25 Meyi 2007.

28. Ngethuba ndiqhuba umsebenzi wam, ububandakanya ukwenza izinto ezibandakanya ukuphicotha incwadi ukuze ndifumane ubungqina buphicotho obuzeleyo ngolwazi lwenkqubo nezinye izinto, inkqubo neendlela ezifana noko. Inkqubo ezikhethiweyo zixhomekeka kwindlela umphicothi-zincwadi abona ngayo.
29. Ndikholelwa ukuba ubungqina endibufumeneyo buzele kwaye bufanelekileyo ukuze bundinike iziseko zezi ziphumo zicaciswe apha ngezantsi.

Iziphumo zophicotho-zincwadi

Ukungabikho kweenkqubo zokunika ulwazi ngenkqubo

30. Khange sikwazi ukufumana ubungqina obuhluthisayo bophicotho-zincwadi ngokolwazi lwenkqubo ye-WCED ngenxa yokuba inkqubo esetyenziswayo ezifanelekileyo zokunika ulwazi ngeziphumo ezichongiweyo ibingafanelekanga ukusetyenziselwa iinjongo zokuphonononga umsebenzi. Iinkcukacha zimi ngolu hlobo:

Kwisikali somgangatho womsebenzi PMS801, inani u-21 347 elinikiweyo kwingxelo yonyaka ngolwazi lomgangatho womsebenzi alikwazanga ukuqinisekiswa kuba iinkcukacha-lwazi zisabangulwa iimpazamo ke ngoko amanani aza kulungisiswa kwilixa elizayo.

Kwisikali somgangatho womsebenzi PMS802, inani u-14 126 liphelela kuDisemva 2006 amanani aza kulunga-lungiswa angqinisiswe kwilixa elizayo.

Ubungqina bokungahambelani okubonakalayo kulwazi olunikiweyo okanye ukungabikho kobungqina obaneleyo

31. Le mpumelelo ilandelayo kwizikali zomgangatho womsebenzi khange ixhaswe ngamaxwebhu afanelekileyo ephuma kuwo.
 - PMS502, PMS503 no-PMS601: Akukho maxwebhu okuxhasa oku akhoyo.
 - PMS206: Iindleko eziqikelelwayo ezili-R12 yezigidi ngezigidi yeziseko zophuhliswa ezinokusuwa khange zixhaswe ngobungqina.
32. Ubungqina obunikiweyo bokuxhasa ulwazi ngenkqubo olunike kwingxelo yonyaka bebungahambelani nobunikiweyo bolwazi lwenkqubo. Iinkcukacha zidweliswe apha ngezantsi:
 - PMS205: Kunikwe abaphicothi-zincwadi iitotali ezintathu ngenani lezikolo zizonke. Khange zikwazi ukugqiba ukuba yeyiphi itotali echanekileyo.
 - PMS203: Kukho umahluko kumanani ezikolo anikiweyo. Kukho inani elibiza ama-1 506 kubekho uluhlu oluthetha ngeezikolo ezingama-1 452. Akukho ngcaciso inikiweyo ngalo mahluko.
 - PMS501: Amaxwebhu obungqina anikezelwe iinjongo zophicotho-ncwadi awahambelani nendlela eyiyo ekuqhutywe ngayo xa ithelekiswe nobekujoliswe kuko kwingxelo yonyaka. Engxelo eyiyo yenkqubo xa ithelekiswa nobe kumiselwe ithetha ngokuba inani elililo labafundi ngama-53 695 ngoku lona ulwazi olunikiweyo lenani elililo labafundi ingama-56 350.

Ukungabikho kweenjongo neziphumo zezikali zomgangatho womsebenzi ezichaziweyo kwingxelo yonyaka

33. Akukho zinjongo zimiselweyo kwisicwangciso senkqubo kwaye akukho ziphumo zinikiweyo kwingxelo yonyaka zezi zikali zomgangatho womsebenzi zilandelayo:

PMS004, PMS202, PMS211, PMS213, PMS218 kunye no-PMS504

34. Akukho zinjongo zimiselweyo kwisicwangciso senkqubo sonyaka nakwingxelo yonyaka zezi ziphumo zizezona zilandelayo zezikali zomgangatho womsebenzi:

PMS003, KS206, PMS216 kunye no-PMS502

Ingxelo yokunika ingxelo engangqinelaniyo phakathi kwenjongo neziphumo

35. Ingxelo yokunika ingxelo yesikali somgangatho womsebenzi PMS212 ayingqinelani, njengokuba indlela yokunika ingxelo yesona siphumo yahlukile kwindlela yokunika ingxelo yenjongo. Injongo inikwe ngokwepesenti (62%) saze isiphumo sabonakaliswa ngamashumi (Ilitherasi: 0.174, Izibalo 0.375).

UMBULELO

36. Uncedo lwabasebenzi be-WCED ngethuba kusenziwa uphicotho-zincwadi lubulelwa ngezandla zozibini.



J Diedericks *omele* uMphicothi-zincwadi Jikelele

EKapa

31 Agasti 2007

**ISEBE LEMFUNDO LENTSHONA KOLONI
IVOTI 5**

**LiNgxelo zeMali zoNyaka
Zonyaka ophele nge-31 kaMatshi 2007**

Ingxelo zezimali zilungiselelwe ngokwale migaqo-nkqubo ilandelayo, esetyenzisweyo ngokungagungqiyo kuyo yonke imibandela ebambekayo, apho ingasetyenziswanga khona ichaziwe. Nangona kunjalo, apho kufaneleke khona kwaye kuvakalayo, olunye ulwazi olongezelelweyo lisetyenzisiwe ukuphucula ukubaluleka kweNgxelo zeziMali kwaye nokuthobela imimiselo yezomthetho yoMthetho woLawulo-mali zikaRhulumente, uMthetho 1 ka-1999 (njengoko ulungisiwe nguMthetho 29 ka-1999), neMimiselo yeMali ekhutshwe ngokwemigaqo yoMthetho noMthetho weCandelo lezeNgeniso, uMthetho 2 ka-2006.

1. Ukunikezelwa kweNgxelo zezeMali

1.1. Isizathu zokuzilungisa

liNgxelo zeziMali zilungiswa ngokwemigaqo yobalo-mali yemali eseli ilungisiwe, ngaphandle kokuba kucaciswe ngenye indlela. Indlela yemali eseli ilungisiwe ibandakanya ubalo-mali lwemali eseli ilungisiwe incediswa zezinye izinto ezichaziweyo. Kwimali ebonakalayo kubalop-mali, ukhutshelo nezinye izinto ezenziwe zibonakala xa imali ifunyanwa okanye ihlawulwa.

1.2 Imali esetyenzisiweyo

Zonke izixa zibhalwe ngeRandi yaseMzantsi Afrika ekwayimali esetyenziswa lisebe.

1.4. Ukuzalisa

Ngaphandle kokuba kucaciswe ngokumbi, onke amanani emali azalisiweyo aya kwiwaka leRandi elikufutshane (R'000).

1.5 Amanani athelekiswayo

Ulwazi lwangaphambili oluthelekisayo lunkiweyo kwiingxelo zemali zalo nyaka. Apha kukho imfuneko khona amanani akhoyo kwiingxelo zemali zangaphambili ahlwele ngokutsha ukuqinisekisa ukuba indlela ayesetyenziswe ngayo ngaphambili iyahambelana nale ikwiingxelo zemali zalo nyaka.

1.6 Amanani okuthelekisa – Ingxelo yoHlahlo-mali

Uahluko phakathi kwesixa-mali esisiso kunye nohlahlo-mali olugqityiweyo kwityala elikhulu ngalinye kwinkcitho elibandakanyiweyo kwiingxelo yohlahlo-mali.

2. Ingeniso

2.1 Iimali ezigunyazisiweyo zokuthenga

Iimali ezigunyazisiweyo zokuthenga neziqinisekisiweyo zongezwa kwiingxelo zezimali ngala mhla zigunyaziswa ngawo. Uhlelwa-hleliso kwimali ezigunyazisiweyo olwenziwa ngenkqubo yokuhlelwa-hlelisa uhlahlo-lwabiwo mali lufakwa kwiingxelo zezimali ngala mhla uhlelwa-hleliso lwenziwe ngawo.

Iimali ezigunyazisiweyo zizonke zifakwa kwiingxelo yenkqubo zezimali.

Iimali ebezigunyazisiwe ezingasetyenziswanga zibuyiselwa kwiNgxowa yeNgeniso yePhondo. Izixa-mali ezibanjwa kwiNgxowa yeNgeniso lePhondo ziyabandakanywa kwiingxelo zemeke yezimala ukuphela konyaka-mali.

**ISEBE LEMFUNDO LENTSHONA KOLONI
IVOTI 5**

**LiNgxelo zeMali zoNyaka
Zonyaka ophele nge-31 kaMatshi 2007**

2.2 Ingeniso yesebe

Yonke ingeniso yesebe ihlawulwa kwiNgxowa yeNgeniso yePhondo xa ifunyanwa, ngaphandle kokuba kucaciswe ngakumbi. Imali ezibanjwa iNgxowa yeNgeniso yePhondo ukuphela konyaka-mali zifakwa kwingxelo yezezimali. Imali ezifunyenwe ngomhla wokunikwa kwengxelo ziyachazwa kumanqaku ongezeleleyo okwazisa kwingxelo zemali zonyaka.

2.2.1 Ingeniso yerhafu

Ingeniso yerhafu ibandakanya zonke imali ezinyanzelekileyo ezingacelwayo eziqokelelwa lisebe ngokwemithetho okanye nomgaqo (zingabandakanywa izohlwayo namanye amatyala afana nazo)

Ingeniso yerhafu ifakwa kwingxelo yezimali xa ifunyanwa.

2.2.2 Ukuthengiswa kweempahla neenkonzo kunempahla ezingundoqo

Ingeniso efunyanwa ngokuthengiswa kweempahla okanye neenkonzo ifakwa kwingxelo zezimali xa imali ifunyanwa.

2.2.3 Izohlwayo namanye amatyala afana nazo

Izohlwayo namanye amatyala afana nazo zimali ezinyanzelekileyo ezingacengwayo ezinyanzeliswa yinkundla yamatyala okanye iqumrhu elingagqibelelanga lezomthetho ezikolelwa lisebe. Ingeniso esuka kwizohlwayo namatyala afana nazo ibalwa kwingxelo zezimali ukufunyanwa kwemali.

2.2.4 Imali-nzala, inzala kunye nengeniso kumhlaba oqeshisiweyo

Imali-nzala, inzala kunye nengeniso kumhlaba oqeshisiweyo ibalwa kwingxelo zezimali ukufunyanwa kwemali.

2.2.5 Ukuthengiswa kweempahla ezingundoqo

Ingeniso eyenziwe kwintengiso yeempahla ezingundoqo ibalwa kwingxelo yezimali ukufunyanwa kwemali.

2.2.6 Intengiselwano yezimali ngeempahla namatyala

Intlawulo zeemali ebezibolekiwe nebeziniwe abasebenzi kwangaphambili namashishini karhulumente kulungiselelwa imibandela yezomgaqo-nkqubo zifakwa kwingxelo zemali ukufunyanwa kwemali.

Itshekhi ebezikhutshwe kwisithuba sobalo-mali langaphambili eziphelelwayo phambi kokuba ziye kutshintshwa ebhankini zibalwa njengengeniso kwingxelo zezimali xa itsheki iphelelwa lixesha. Xa iphinda isenziwa itshekhi intlawula ithathwa kwiNgeniso.

Inzuzo eyenziwe kunaniselwano lwangaphandle ibalwa njengengeniso.

**ISEBE LEMFUNDO LENTSHONA KOLONI
IVOTI 5**

**LiNgxelo zeMali zoNyaka
Zonyaka ophele nge-31 kaMatshi 2007**

2.2.7 Izipho, amalizo neenkxaso-mali (iimali ezikhutshelweyo ezifunyenweyo)

Zonke izipho eziyimali, amalizo neenkxaso-mali zibhatalwa kwiNgxowa yePhondo yeNgeniso zibhalwe njengengeniso kwingxelo yezimali xa zifunyanwa. Iimali ezifunyanwe ngomhla wokunika ingxelo ziyachazwa kumanqaku okukhumbuza kwiingxelo zezimali.

Zonke iintlobo zezipho, amalizo neenkxaso-mali ziyachazwa namaxabiso azo kwizihlomelo ezikwiingxelo zezimala.

2.6 Uncedo-mali lwasekhaya nolwangaphandle

Inkxaso ephuma apha ekhaya nangaphandle ifakwa njengengeniso xa isaziso sokuba soncedo esisuka kuVimba weSizwe sifikile okanye xa isebe lizifumanela imali ngqo kumxhasi (abaxhasi).

Yonke inkxaso yobubela evela ngaphakathi nangaphandle liyachawa ixabiso layo kwizihlomelo ezikwiingxelo zezimali zonyaka.

Intlawulo eyimali eyenziwe kulo nyaka kweeprojekthi ezifumene inkxaso-mali ngaphakathi nangaphandle zibalwa njengencitho kwingxelo zezimali. Ixabiso loncedo-mali esetyenziswe phambi kokuba uncedo-mali lifike libalwa njengemali efunyenweyo kwingxelo yezezimali.

Iimali ezisetyenziswe kakubi kuncedo-mali lwangaphakathi nolwangaphandle kwanje nayo yonke imali engasebenzanga zibalwa njengemali eziza kuhlawulwa kwingxelo yezezimali.

3. Inkcitho

3.1 Ukubuyekeza kwamabasebenzi

Imivuzo nemirholo zenza iintlawulo kubasebenzi. Imivuzo nemirholo zibalwa njengencitho kwingxelo-mali xa intlawulo yayo yenziwe kwiincwadi (ungagqithanga umhla wama-31 Matshi nyaka nonyaka). Imbuyekezo ekuqa ezinye izinto iba yinxalenye yenkcitho kwiimpahla ezingundoqo kwingxelo-mali.

Zonke ezinye iintlawulo zibalwa njengencitho yalo nyaka-mali.

Izibonelelo zobuntu zibandakanya intlawulo ehlawulwa ngumqeshi kwimibutho ye-inshorensi yabantu ehlawulela umqeshwa. Izibonelelo zabantu zibalwa njengencitho kwingxelo zezimali xa intlawulo yenziwe ezincwadini.

3.1.1 Izibonelelo zabasebenzi zexeshana

Izibonelelo zabasebenzi zexeshana zinelungelo lokuthatha ikhefu (kubandakanya neentsuku zekhefu eziqingqiweyo), umvuzo wenyanga owongezelelweyo, kunye nemali eyongezelelweyo ngokwendlela oqhube ngayo. Iindleko zezibonelelo zabasebenzi zexeshana zibalwa njengemivuzo nemirholo kwingxelo-mali xa intlawulo leyo yenziwe ezincwadini (ungagqithanga umhla wama-31 Matshi nyaka nonyaka).

Izibonelelo zabasebenzi zethutyana ezibangele uxanduva olusemthethweni okanye olubophelelayo ziyachazwa kumanqaku engcaciso kwingxelo zezimali. Ezi mali azibalwa kwingxelo zezimali.

ISEBE LEMFUNDO LENTSHONA KOLONI IVOTI 5

LiNgxelo zeMali zoNyaka
Zonyaka ophela nge-31 kaMatshi 2007

3.1.2 Izibonelelo zabasebenzi zexesha elide

3.1.2.1 Izibonelelo zaxa kuyekwe umsebenzi

Izibonelelo zaxa kuyekwe umsebenzi ezifana nezimali zokuyeka umsebenzi zibalwa njengencitho kwingxelo zezimali njengemali ekhutshelweyo (kumakhaya) xa intlawulo yenziwe ezincwadini (ungagqithanga umhla wama-31 Matshi nyaka nonyaka)

3.1.2.2 Izibonelelo zomhlala-phantsi

Isebe linezibonelelo zomhlala-phantsi kwabanye abasebenzi balo eze ngesicwangciso esicacileyo sezibonelelo zabasebenzi bakarhulumente. Ezi zibonelelo zixhaswa ngemali ngumqeshi nomqeshwa. Imali ehlawulwa ngumqeshi kule ngxowa ibalwa xa imali ingenile engxoweni ezincwadini (ungagqithanga umhla wama-31 Matshi nyaka nonyaka). Azibalwa izibonelelo zomhlala-phantsi kwingxelo-mali zesebe. Nawaphi na amatyala angakhona abalwa kwingxelo zezimali zeNgxowa yeNgeniso yeSebe hayi kwingxelo zezimali zesebe elingumqeshwa.

Isebe linezibonelelo zezonyando kwabanye abasebenzi balo. Intlawulo zomqeshi kwingxowa yempilo yomsebenzi zibalwa xa intlawula yenziwe kwingxowa yangena ezincwadini (phambi komhla wama-31 Matshi nyaka nonyaka).

3.2 Iimpahla neenkonzo

Intlawulo zeempahla okanye neenkonzo zibalwa njengencitho kwingxelo yezimali xa imali ihlawulwe ezincwadini (ungagqithanga umhla wama-31 Matshi nyaka nonyaka) Inkciitho ithathwa njengemali ukuba ukuba iimpahla neenkonzo bezisetyenziswe kwiiprosjekthi zemali okanye iimpahla exabisa ama-R5 000 okanye ngaphezulu ithengiwe. Zonke iimpahla ezixabisa ngaphantsi kwama-R5 000 ziza kubekwa phantsi kweempahla neenkonzo.

3.3 Imali-nzala noqeshiso ngomhlaba

Imali-nzala neentlawulo zokuqeshisa zithathwa njengencitho kwingxelo-mali xa imali ihlawulwe ezincwadini (ungagqithanga umhla wama-31 Matshi nyaka nonyaka). Le mali ayibandakanyi imali yokuqeshiswa ukusetyenziswa kwesakhiwo okanye ezinye izinto ezisisigxina. Akululanga ukwahlula phakathi kwentlawulo yokusetyenziswa komhlaba nezinye izinto ezingenakususwa kuwo, sonke esi sixa sifakwa phantsi *kwempahla neenkonzo*.

3.4 Ukhutsho-tsalo lwemali kwiimpahla namatyala

Amatyala ayacinywa xa echazwe njengangenakuhlaleka. Amatyala acinyiweyo axhomekeka kwimali egciniweyo okanye nengasetyenziswanga kwiimali ebezigunyazisiwe. Kucinywa amatyala xa kuphela unyaka okanye kukho imali ekhoyo. Akukho sibonelelo sikhoyo seemali ezingahlawulekanga kodwa ezi mali ziyachazwa kumanqaku enkcazo eyongezelelweyo.

Imali ezilahlekileyo kurhwebo ngemali namazwe angaphandle zibalwa xa imali ihlawulwe.

Yonke enye ilahleko ibalwa xa kukhululwe ngabasemagunyeni ukuba ibandakanywe.

**ISEBE LEMFUNDO LENTSHONA KOLONI
IVOTI 5**

**LiNgxelo zeMali zoNyaka
Zonyaka ophele nge-31 kaMatshi 2007**

3.5 Inkcitho engagunyaziswanga

Xa ibhaqiwe inkcitho engagunyaziswanga ibalwa njengempahla kwingxelo-mali ide ibe ivunyiwe ngabasemagunyeni abafanelekileyo, okanye ifunyenwe kulo mntu uchaphazelekayo okanye icinyiwe njengengenakuhlawuleka kwingxelo yezimali.

Inkcitho engagunyaziswanga evunyiweyo nemali yayo ibalwa kwingxelo yezimali xa inkcitho engagunyaziswanga ivunyiwe kunye nemali yayo ifunyenwe. Kwiimeko apho le nkcitho ivunyiwe imali ingekho ibalwa njengencitho, kude kube kukho imali egciniweyo, kwingxelo yezimali ngomhla wokuvunywa kwayo.

3.6 Inkcitho engenanjongo neyilahleko

Inkcitho engenanjongo neyilahleko ibalwa njengempahla kwingxelo yezimali ide ibe iphinde yahlawulwa ngumntu ochaphazelekayo okanye icinyiwe njengengahlawulekiyo kwingxelo zemali.

3.7 Inkcitho engekho mthethweni

Inkcitho engekho mthetheni ibalwa njengencitho kwingxelo zezimali. Ukuba inkcitho ayamkelelwanga ngabasemagunyeni abafanelekileyo ithathwa njengempahla ide ibe ihlawulwe okanye icinyiwe njengengenakuhlawuleka.

3.8 Ukhutshelo nezibonelelo-mali

Ukhutshelo nezibonelelo-mali zibalwa njengencitho xa imali ihlawulwe ezincwadini (ungagqithanga umhla wama-31 Matshi nyaka nonyaka)

3.9 Inkcitho kwiimpahla ezingundoqo

Intlawulo kwiimpahla ezingundoqo zibalwa njengencitho kwingxelo zezimali xa imali ihlawulwe ezincwadini (ungagqithanga umhla wama-31 Matsho nyaka nonyaka)

4. Iimpahla

4.1 Imali kunye nezinexabiso layo

Imali kunye nezinexabiso layo zifakwa kwingxelo yezimali ziza kuhlawulwa.

Ukulungiselela ingxelo zemali ezinkozo ekhoyo, imali kunye nezinexabiso layo zibandakanya imali ekhoyo, eziza kuhlawulwa, nezinye izinto ezinexabiso zexeshana eziphela ngokukhawuleza kunye namatyala asebhankini.

4.2 Intlawulo zangaphambili

Imali ezihlawulwe kwangaphambili zibalwa kwingxelo yezimali xa zihlawulwa.

**ISEBE LEMFUNDO LENTSHONA KOLONI
IVOTI 5**

**LiNgxelo zeMali zoNyaka
Zonyaka ophela nge-31 kaMatshi 2007**

4.3 Iimali ezifunyanwayo

Iimali ezifunyanwayo kwingxelo yezimali zisuka kwimali ehlawulwe ngesandla zisuka kwabanye abantu okanye imibutho.

Ingeniso ezakufunyanwa engekaqokelelwa iyabalwa kumanqakwana ongezelelweyo okucaciswa. Iimali ekukhangeleka ngathi azinakuhlawuleka ziyachazwa kumanqakwana ongezelelweyo okucacisa.

4.4 Utyalo-mali

Imali etyaliweyo eyimali ibalwa njengendleko kwingxelo yezimali. Yonke imali engenayo efana nenzala efunyanwano okanye imali efunyenwe ngokuthengiswa kutyalo-mali ibalwa kwingxelo yezimali xa imali ifunyenwe.

Utyalo-mali luyavabanywa kujongwa ilahleko yokungaqhubi kakuhle nanini na iziganeko okanye utshintsho kwiimeko lubonisa ukuba lo mali ibityaliwe ayiqhubanga kakuhle. Yonke ilahleko eyenziweyo ngenxa yokungaqhubi kakuhle iyachazwa kumanqaku okucacisa ongezelelweyo.

4.5. Iimali-mboleko

Iimali-mboleko zibalwa kwingxelo zezimali ngemali ezikhutshwe ziyiyo xa imali le ihlawulwa kumboleki-mali. Amatyalala emali-mboleko ayancitshiswa xa imali zokuhlawula zifunyanwa kwakhono kobolekile. Iimali ezikhangeleka njengezingenakuhlawulwa ziyachazwa kumanqaku okucacisa ongezelelweyo.

4.6 Uluhlu lweempahla

Iimpahla ezithengiweyo ngalo nyaka-mali zichazwa nendleko zazo kumanqakwana.

4.7 Iimpahla engundoqo

Iimpahla engundoqo ibhalwa kwirisith njengemali nexabiso layo. Indleko yempahla ichazwa njengendleko zonke zokuyithenga. Apho iindleko zingenakuqinisekiswa ngokuchanekileyo, impahla engundoqo lingachazwa ixabiso layo lingabaxwa. Apho ixabiso elicinelwayo elingabaxwanga lingekuqinisekiswa iimpahla leyo ifakwa kuluhlu lwempahla ku-R1.

Iiprosjekthi (zokwakhiwa/uphuhliso) eziqhuba ziwugqibe unyaka-mali ezidibene neempahla ezingundoqo, zibalwa njengempahla xa zigqityiwe kunye neendleko zizonke zethuba kuqhutywa iprosjekthi.

Amanqakwana ongezelelwe okucacisa u-31 no-32 abonakalisa konke ukutshintsha kuluhlu lweempahla kulo nyaka-mali

5. Amatyalala

5.1 Iimali eziza kuhlawulwa

Izinto eziza kuhlawulwa zibandakanya ikakhulu iimali ezibanjwa kwamanye amasebe karhulumente. Ezi mali zibalwa njengendleko yangaphambili kwingxelo zezimali.

**ISEBE LEMFUNDO LENTSHONA KOLONI
IVOTI 5**

**LiNgxelo zeMali zoNyaka
Zonyaka ophele nge-31 kaMatshi 2007**

5.2 Izimali zokuqeshisa

Iimali zokuqeshisa zibandakanya iimali ezibanjwa ukusuka kumhla wokongena ukuya kutsho esiphelweni sesivumelwano. Ezi mali azibalwa kwingxelo zezimali njengetyala okanye inkcitho kwingxelo yezimalo koko ziyabandakanywa kumanqaku ongezelelwe okucacisa.

Imali zemihla ngemihla zokuqeshisa zibalwa xa intlawulo yenziwe. Impahla ezithengwe ngokweemali zezivumelwano zokuqeshisa ziyachazwa kwizihlomelo nakumanqaku ongezelelweyo okucacisa kwingxelo zezimali.

5.3 Izongezelelo

Izongezelelo ziqula iimpahla/iinkonzo ezifunyenweyo kodwa akwabikho ziqinisekiso zokuhlululwa ezifunyenweyo kumthengisi ngomhla wokongena, okanye apho isiqinisekiso sentlawulo sifunyenwe kodwa igama lokugqibela eligunyazisa intlawulo alikafakwa ezincwadini.

Izongezelelo azibalwa kwingxelo yezimali njengetyala okanye inkcitho kwingxelo yezimalo koko ziyabandakanywa kumanqaku ongezelelweyo okucacisa.

5.4 Amatyalalaleliselweyo

Ityala elilaleliselweyo lityala elinokuvela kwizinto zakudala okanye ubukho balo buza kuqinisekiswa ngokuthi kwenzeke okanye kungenzeki nto ithile kwizinto ezingaqinisekanga ezinokwenzeka kwilixa elizayo izinto ezo zinganakulawulwa lisebe, okanye

Ityala elilaleliselweyo lityala elikhoyo elisuka kwizinto zangaphambili kodwa elingamkelwayo kuba:

Akuqinisekekanga ukuba ukukhutshwa kwezibonelelo ezinenzuza zemali okanye iinkonzo ezinokwenza oko kuza kufuneka ukuza kubhatalwe ityala; okanye

Imali yetyala ayinakubalwa ngokuthembekileyo

Amatyalalaleliselweyo ayabandakanywa kumanqaku ongezelelweyo okucacisa.

5.5 Izibophelelo

Izibophelelo zibhekisa kwiimpahla/iinkonzo ezivunyiweyo okanye kwatyikitywa namaxwebhu ezivumelwano, kodwa ezingazange zifike ngosuku okuvunyelwane ngalo.

Izibophelelo azibalwa kwingxelo yemali njengetyala okanye inkcitho kwingxelo yezimali koko ziyabandakanywa kumanqaku ongezelelweyo okucacisa.

6. Iimpahla zizonke

6.2 Uvimba wemali

Uvimba wemali ubandakanya iimpahla eziyimali okanye namatyala angaphambili koko abalwe kwingxelo yemali okokuqala kule ingxelo. Imali zikhutshelwa kwiNgxowa yeNgeniso yePhondo xa ifika, ibhatalwa okanye iqokelelwe.

**ISEBE LEMFUNDO LENTSHONA KOLONI
IVOTI 5**

**LiNgxelo zeMali zoNyaka
Zonyaka ophela nge-31 kaMatshi 2007**

6.2 Ingeniso enokuhlawuleka

Imali zibalwa njengokuba ziyingeniso enokuhlawuleka xa intlawulo eyayenziwe kunyaka-mali ongaphambili ifumaneka kulowo ebenetyalo kulo nyaka-mali

7. Ukhutsho-fako mali phakathi kwamasebe ayeleleneyo

Amasebe ayeleleneyo ngamasebe alawula okanye anefuthe kwimibutho ekuthatheni izigqibo ngezimali okanye zomsebenzi. Ulwazi olungqalileyo ngokuphathelene nokhutsho-fako mali lamasebe ayeleleneyo luyabandakanywa kumanqaku ongezelelweyo okucacisa.

8. Abasebenzi ababalulekileyo kulawulo

Abasebenzi ababalulekileyo kulawulo ngabo bantu banegunya noxanduva lokucebisa, ukukhokela nokulawula imisebenzi yesebe.

Imbuyekezo ehlawulwayo kubasebenzi ababalulekileyo kubandakanya namalungi osapho lwabo apho kwenzeka khona, iyabandakanya kumanqakwana okucacisa.

9. Intsebenziswano phakathi kukarhulumente namashishini abucala

Intsebenziswano phakathi kukarhulumente namashishini abucala lutshintshiselwano lorhwebo phakathi kwesebe neshishini labucala apho ishishini labucala

- Lenza umsebenzi wesebe egameni lesebe okanye
- Nokufumana igunya lokusebenza iimpahla zikarhulumente lisenzela inzuzo yalo;
- Ithatha uxanduva lwemingcipheko yemali evakalayo, ubuchule kunye neyomsebenzi ngokuphathelene nenkqubo yomsebenzi wesebe okanye nempahla zikarhulumente;
- Lifumana inzuzo ngokwenza umsebenzi wesebe okanye ngokusebenzi iimpahla zikarhulumente nokuba
 - Lijonge ukuhlawulwa lisebe ngemali eliza kuyifumana kwiNgxowa yeNgeniso
 - Okanye ukubiza imali eziza kuqokelelwa lishishini labucala kubasebenzisi okanye abathengi benkonzo abayifumeneyo.
 - Okanye ukuzidibanisa zombini ezi zinto okanye le mirhumo.

**ISEBE LEMFUNDO LENTSHONA KOLONI
VOTI 5**

Ingxelo yolwabiwo-mali lukanyaka-mali ophele ngomhla wama-31 Matshi 2007

Ulwabiwo-mali ngokweNkqubo nganye

Inkqubo	2006/07							2005/06	
	Ulwabi-womali olulungelela nisiweyo	Ukushenxiswelwa kwezimali kwenye into	Uweli-somali	Ulwabi-womali lokuphetha	Eyona nkitho	linguqu	Inkcitho njengomyinge wolwabiwomali lokuphetha	Ulwabi-womali lokuphetha	Eyona nkitho
	R'000	R'000	R'000	R'000	R'000	R'000	%	R'000	R'000
1.1 Ezolawulo									
Okuhlawulwayo	266, 069	-	(7, 391)	258, 678	254, 379	4, 299	98, 3%	215, 027	210, 362
Utshintshelo nenkxaso-mali	13, 954	-	9, 244	23, 189	22, 731	458	98.0%	14, 065	13, 835
Intlawulo yeeasethi eyimali	12, 457	-	(1, 853)	10, 604	10, 604	-	100.0%	14, 042	13, 296
1.2 Imfundo yezikolo zikarhulumente eziqhelekileyo									
Okuhlawulwayo ngoku	5,269,025	-	(72, 794)	5, 196,231	5,067, 372	128, 859	97, 5%	4, 775, 158	4, 734, 420
Utshintshelo nenkxaso-mali	278, 246	-	53, 580	331, 826	332, 292	(466)	100, 1%	343, 102	343, 085
Intlawulo yeeasethi eziyimali	249, 071	-	16, 142	265, 213	223, 986	41, 227	84, 5%	277, 532	271, 053
1.3 Inkxaso-mali yezikolo ezizimeleyo									
Utshintsho nenkxaso-mali	34, 127	-	132	34,259	34,259	-	100.0%	32,471	32,445
1.4 Imfundo yezikolo zikarhulumente									
Okuhlawulwayo ngoku	309,150	-	3,072	312,222	312,419	(197)	100.1%	294,683	294,556
Utshintshelo nenkxaso-mali	76,890	-	(203)	76,687	76,489	198	99.7%	71,738	71,735
Intlawulo ye Capital assets	-	-	203	203	204	(1)	100.5%	500	156
1.5 Iikholeji zemfundo enabileyo noqeqesho									
Okuhlawulwayo ngoku	154,774	-	(14,729)	140,045	140,010	35	100.0%	133,541	133,538
Utshintshelo nenkxaso-mali	109,753	-	21,251	131,004	131,038	(34)	100.0%	34,647	34,648
1.6 Imfundo yabadala noqeqesho olungundoqo									
Okuhlawulwayo ngoku	7,797	-	(1,602)	6,195	6,163	32	99.5%	5,848	5,850
Utshintshelo nenkxaso-mali	15,774	-	1602	17,376	17,376	-	100.0%	17,202	17,20
1.7 Uphuhliso lwabasaqala isikolo									
Okuhlawulwayo ngoku	55,913	-	(6,522)	49,391	44,411	4,980	89.9%	44,765	44,764
Utshintshelo nenkxaso-mali	51,484	-	(132)	51,352	45,784	5,568	89.2%	30,033	29,713
1.8 Iinkonzo ezincedisayo nezayamene nazo									
Okuhlawulwayo ngoku	93,492	-	(267)	93,225	87,197	6,028	93.5%	71,288	70,099
Utshintshelo nenkxaso-mali	105,394	-	8,165	113,559	113,557	2	100.0%	119,459	118,928
Intlawulo yeeasethi eziyimali	12,500	-	(7,898)	4,602	91	4,511	2.0%	9,558	9,560
Isixa-mali sisonke	7,115,861	-	-	7,115,861	6,920,362	195,499	97.3%	6,504,659	6,449,244

Ulungelalaniso nengxelo yenkqubo yosetyenziso-zimali

Yongeza: Inkcitho yonyaka ongaphambili engagunyaziswanga evunyiweyo ikhatshwa ziirisiti zenkxaso-mali zeSebe

Izimali ezizizo zengxelo yenkqubo yosetyenziso-mali nganye (Imali iyonke) -

Inkcitho yonyaka ongaphambili evunyiweyo

Izimali ezizizo zengxelo yenkqubo yosetyenziso-mali nganye (Imali iyonke)

-	-
2,014	-
7,117,875	-
	-
6,920,362	

29,456	-
1,647	-
6,535,762	-
	29,456
6,478,700	

**ISEBE LEMFUNDO LENTSHONA KOLONI
VOTI 5**

Ingxelo yolwabiwo-mali lukanyaka-mali ophele ngomhla wama-31 Matshi 2007

Uhlahlo-mali ngokuhlelwa ngokwezoqoqosho

Uhlelo ngokwezoqoqosho	2006/07							2005/06	
	Ulwabi-womali olulungelela nisiweyo	Ukushen-xiswelwa kwezimali kwenye into	Uweli-somali	Ulwabi-womali lokuphetha	Eyona nkcitho	linguqu	Inkcitho njengomyinge wolwa-biwomali lokuphetha	Ulwabi-womali lokuphetha	Eyona nkcitho
	R'000	R'000	R'000	R'000	R'000	R'000	%	R'000	R'000
Okuhlawulelweyo ngoku									
Imbuyekezo yabaqeshwa	5,388,030	-	(13,380)	5,374,650	5,253,453	121,197	97.7%	4,999,731	4,962,469
Impahla neenkonzo	763,435	-	(84,300)	679,135	657,411	21,724	96.8%	533,648	525,330
Inzala nerente yomhlaba	-	-	-	-	-	-	0.0%	1,141	-
Utshintshiselwano neeasethi namatyala	4,755	-	(2,553)	2,202	1,087	1,115	49.4%	5,790	5,790
Utshintshelo nenkxaso-mali									
Amaphondo noomasipala	3,322	-	171	3,493	3,330	163	95.3%	13,007	12,857
Iiarhente zamasebe neekhawunti	3,756	-	-	3,756	3,756	-	100.0%	3,839	3,306
Amaziko angewanzuzo	655,328	-	93,042	748,370	746,628	1,742	99.8%	620,994	620,954
Amakhaya	23,207	-	426	23,633	19,812	3,821	83.8%	24,877	24,473
Intlawulo yeeasethi eziymali									
Izakhiwo nezinye iziseko eziqingekileyo	247,216	-	14,887	262,103	220,878	41,225	84.3%	274,808	270,665
Iimatshini nezinye izixhobo	26,812	-	(8,322)	18,490	13,978	4,512	75.6%	23,747	20,323
Izixhobo zekhompyutha nezinye izinto ezingaphathekiyo kambe ezinexabiso	-	-	29	29	29	-	100.0%	3,077	3,077
Isixa-semali sisonke	7,115,861	-	-	7,115,861	6,920,362	195,499	97.3%	6,504,659	6,449,244

**ISEBE LEMFUNDO LENTSHONA KOLONI
VOTI 5**

Ingxelo yolwabiwo-mali

linkcukacha zenkqubo nganye 1- Ulawulo lonyaka-mali ophele ngomhla wama-31Matshi 2007

Inkqubo nganye ngenkqutwana engaphantsi kwayo	2006/07							2005/06	
	Ulwabi-womali olulungelela nisiweyo	Ukushenxiswelwa kwezimali kwenye into	Uweli-somali	Ulwabi-womali lokuphetha	Eyona nkcitho	linguqu	Inkcitho njengomyinge wolwabiwomali lokuphetha	Ulwabi-womali lokuphetha	Eyona nkcitho
	R'000	R'000	R'000	R'000	R'000	R'000	%	R'000	R'000
1.1 Iofisi yoMphathiswa we Phondo									
Okuhlawulelwayo ngoku	3,696	-	(294)	3,402	3,402	-	100.0%	3,140	3,140
Utshintshelo nenkxaso-mali	2	-	-	2	2	-	100.0%	12	11
Intlawulo yeeasethi eziyimali	-	-	41	41	41	-	100.0%	-	-
1.2 linkonzo zoshishino									
Okuhlawulelwayo ngoku	139,063	-	(14,110)	124,953	122,354	2,599	97.9%	109,802	107,951
Utshintshelo nenkxaso-mali	2,016	-	745	2,761	2,762	(1)	100.0%	2,280	2,279
Intlawulo yeeasethi eziyimali	1,166	-	2,360	3,526	3,526	-	100.0%	1,120	374
1.3 Ezolawulo lwemfundo									
Okuhlawulelwayo ngoku	96,142	-	7,782	103,924	103,911	13	100.0%	89,972	89,973
Utshintshelo nenkxaso-mali	11,466	-	8,499	19,965	19,964	1	100.0%	11,542	11,542
Intlawulo yeeasethi eziyimali	11,225	-	(4,822)	6,403	6,403	-	100.0%	12,914	12,914
1.4 Uphuhliso lwabasebenzi									
Okuhlawulelwayo ngoku	11,760	-	(724)	11,036	9,783	1,253	88.6%	12,113	9,298
Utshintshelo nenkxaso-mali	458	-	-	458	1	457	02%	231	3
1.5 Ezolawulo lwemfundo neeNkqubo zolwazi ezithungeleneyo									
Okuhlawulelwayo	15,408	-	(45)	15,363	14,929	434	97.2%	-	-
Utshintshelo nenkxaso-mali	3	-	-	3	2	1	66.7%	-	-
Intlawulo yeeasethi eziyimali	66	-	45	111	111	-	100.0%	-	-
Isixa-mali sisonke	292,471	-	-	292,471	287,714	4,757	98.4%	243,134	237,493

Uhlelo lwezoqoqosho	2006/07							2005/06	
	Ulwabi-womali olulungelela nisiweyo	Ukushenxiswelwa kwezimali kwenye into	Uweli-somali	Ulwabi-womali lokuphetha	Eyona nkcitho	linguqu	Inkcitho njengomyinge wolwabiwomali lokuphetha	Ulwabi-womali lokuphetha	Eyona nkcitho
	R'000	R'000	R'000	R'000	R'000	R'000	%	R'000	R'000
Okuhlawulelwayo									
Okuhlawulelwayo	1378,758	-	2,893	140,651	140,652	(1)	100.0%	124,645	123,673
Utshintshelo nenkxaso-mali	123,556	-	(7,731)	115,825	112,640	3,185	97.3%	84,592	80,899
Intlawulo yeeasethi eziyimali	4,755	-	(2,553)	2,202	1,087	1,115	49.4%	5,790	5,790
Utshintshelo nenkxaso-mali									
Amaphondo noomasipala	82	-	4	86	85	1	98.8%	433	299
Amaziko angewanzuzo	11,479	-	8,458	19,937	19,741	196	99.0%	11,445	11,445
Amakhaya	2,384	-	782	3,166	2,905	261	91.8%	2,187	2,091
Intlawulo yeeasethi eziyimali									
Izakhiwo nezinye iziseko eziqingekileyo	600	-	(600)	-	-	-	0.0%	-	-
Iimathini nezinye izixhobo	11,857	-	(1,269)	10,588	10,588	-	100.0%	11,466	10,722
Ubucukubhede bekhompuyutha nezinye izinto ezingaphathekiyo kambe ezinexabiso	-	-	16	16	16	-	100.0%	2,576	2,574
Isixa-mali sisonke	292,471	-	-	292,471	287,714	4,757	98.4%	243,134	237,493

ISEBE LEMFUNDO LENTSHONA KOLONI
VOTI 5

Ingxelo yoLwabiwomali

linkcukacha zenkqubo nganye 2- Ulawulo lonyaka-mali ophele ngomhla wama-31Matshi 2007

Inkqubo nganye ngenkqutwana engaphantsi kwayo	2006/07							2005/06	
	Ulwabi-womali olulungelela nisiweyo	Ukushenxiswelwa kwezimali kwenye into	Uweli-somali	Ulwabi-womali lokuphetha	Eyona nkcitho	linguqu	Inkcitho njengomyinge wolwabiwomali lokuphetha	Ulwabi-womali lokuphetha	Eyona nkcitho
	R'000	R'000	R'000	R'000	R'000	R'000	%	R'000	R'000
2.1 Izikolo zikarhulumente zabasaqalayo									
Okuhlawulelwayo ngoku	3,008,394	-	(56,787)	2,951,607	2,819,522	132,085	95.5%	2,725,609	2,690,480
Utshintshelo nenkxaso-mali	140,966	-	32,505	173,501	182,005	(8,504)	104.9%	174,581	174,582
Intlawulo yeeasethi eziyimali	96,815	-	21,210	118,025	118,023	2	100.0%	122,611	116,132
2.2 Izikolo zikarhulumente eziphakamileyo									
Okuhlawulelwayo ngoku	2,039,823	-	(16,450)	2,023,373	2,022,613	760	100.0%	1,844,723	1,844,405
Utshintshelo nenkxaso-mali	109,470	-	12,371	121,841	120,336	1,505	98.8%	140,592	140,592
Intlawulo yeeasethi eziyimali	149,801	-	(5,727)	144,074	102,849	41,225	71.4%	154,447	154,447
2.3 linkonzo zengqesho									
Okuhlawulelwayo ngoku	164,448	-	892	165,340	170,341	(5,001)	103.0%	154,191	148,900
Utshintshelo nenkxaso-mali	22,780	-	8,681	31,461	26,409	5,052	83.9%	17,576	17,557
Intlawulo yeeasethi eziyimali	2,455	-	35	2,490	2,490	-	100.0%	461	461
2.4 Uphuhliso lwabasebenzi									
Okuhlawulelwayo ngoku	13,047	-	188	13,235	13,093	142	98.9%	11,644	11,643
Utshintshelo nenkxaso-mali	-	-	10	10	11	(1)	110.0%	21	22
2.5 Inkqubo yeSizwe yesondlo ezikolweni									
Okuhlawulelwayo	43,313	-	(637)	42,676	41,803	873	98.0%	38,991	38,992
Utshintshelo nenkxaso-mali	5,000	-	13	5,013	3,531	1,482	70.4%	10,332	10,332
Intlawulo yeeasethi eziyimali	-	-	624	624	624	-	100.0%	13	13
Isixa-mali sisonke	5,796,342	-	(3,072)	5,793,270	5,623,650	169,620	97.1%	5,395,792	5,348,558

Uhlelo lwezoqoqosho	2006/07							2005/06	
	Ulwabi-womali olulungelela nisiweyo	Ukushenxiswelwa kwezimali kwenye into	Uweli-somali	Ulwabi-womali lokuphetha	Eyona nkcitho	linguqu	Inkcitho njengomyinge wolwabiwomali lokuphetha	Ulwabi-womali lokuphetha	Eyona nkcitho
	R'000	R'000	R'000	R'000	R'000	R'000	%	R'000	R'000
Okuhlawulelwayo									
Imbuyekezo yabaqeshwa	4,699,054	-	(5,035)	4,694,019	4,573,712	120,307	97.4%	4,363,127	4,326,839
Iimpahla neenkonzo	569,971	-	(67,759)	502,212	493,660	8,552	98.3%	410,890	407,581
Inzala nerente yemihlaba	-	-	-	-	-	-	0.0%	1,141	-
Utshintshelo nenkxaso-mali									
Amaphondo noomasipala	2,929	-	165	3,094	2,926	168	94.6%	11,319	11,303
Amaziko angewanzuzo	258,714	-	53,592	312,306	315,638	(3,332)	101.1%	312,852	312,849
Amakhaya	16,603	-	(177)	16,426	13,728	2,698	83.6%	18,931	18,933
Intlawulo yeeasethi eziyimali									
Izakhiwo nezinye iziseko eziqingekileyo	246,616	-	15,462	262,078	220,853	41,225	84.3%	274,308	270,509
Iimatshini nezinye izixhobo	2,4557	-	667	3,122	3,120	2	99.9%	3,224	544
Ubucukubhede bekhompuyutha nezinye izinto ezingaphathekiyo kambe ezinexabiso	-	-	13	13	13	-	100.0%	-	-
Isixa-mali sisonke	5,796,342	-	(3,072)	5,793,270	5,623,650	169,620	97.1%	5,395,792	5,348,558

**ISEBE LEMFUNDO LENTSHONA KOLONI
VOTI 5**

Ingxelo yolwabiwo-mali

**linkcukacha ngokwenkqubo 3- Imfundo yezikolo zikarhulumente eziqhelekileyo zonyaka-mali ophela
ngomhla wama-31Matshi 2007**

Inkqubo ngokwenkqutya ephantsi kwayo		2006/07							2005/06	
		Ulwabiwo-mali olulungelela nisiweyo	Ukushenxiswelwa kwezimali kwenye into	Uweliso-mali	Ulwabiwo-mali lokuphetha	Eyona nkcitho	linguqu	Inkcitho njengomy-inge wolwabi-womali lokuphetha	Ulwabi-womali lokuphetha	Eyona nkcitho
		R'000	R'000	R'000	R'000	R'000	R'000	%	R'000	R'000
3.1	Isigaba esisezantsi									
	Utshintshelo nenkxaso-mali	19,270	-	(3,368)	15,902	15,902	-	100.0	17,458	17,432
3.2	Isigaba esiphezulu									
	Utshintshelo nenkxaso-mali	14,857	-	3,500	18,357	18,357	-	100.0	15,013	15,013
	Isixa-mali sisonke	34,127	-	132	34,259	34,259	-	100.0	32,471	32,445

Uhlelo ngokwezoqoqosho		2006/07							2005/06	
		Ulwabiwo-mali olulungelela nisiweyo	Ukushenxiswelwa kwezimali kwenye into	Uweliso-mali	Ulwabiwo-mali lokuphetha	Eyona nkcitho	linguqu	Inkcitho njengomy-inge wolwabi-womali lokuphetha	Ulwabi-womali lokuphetha	Eyona nkcitho
		R'000	R'000	R'000	R'000	R'000	R'000	%	R'000	R'000
Utshintshelo nenkxaso-mali										
	Amaziko angewanzuzo	34,127	-	132	34,259	34,259	-	100.0	32,471	32,445
	Isixa-mali sisonke	34,127	-	132	34,259	34,259	-	100.0	32,471	32,445

ISEBE LEMFUNDO LENTSHONA KOLONI
VOTI 5

Ingxelo yolwabiwo-mali

linkcukacha ngokwenkqubo 4-Imfundo yezikolo zikarhulumente ezizodwa zonyaka-mali ophele ngomhla wama-31 Matshi 2007

Inkqubo ngokwenkqutyana nganye		2006/07							2005/06	
		Ulwabiwo-mali olulungelela nisiweyo	Ukushenxis welwa kwezimali kwenye into	Uweliso-mali	Ulwabiwo-mali lokuphetha	Eyona nkcitho	linguqu	Inkcitho njengomyinge wolwabiwomali	Ulwabiwomali lokuphetha	Eyona nkcitho
		R'000	R'000	R'000	R'000	R'000	R'000	%	R'000	R'000
4.1 Izikolo										
	Okuhlawulelweyo ngoku	309,150	-	3,072	312,222	312,419	(197)	100.1%	294,683	294,556
	Utshintshelo nenkxaso-mali	76,888	-	(203)	76,685	76,489	196	99.7%	71,736	71,735
	Intlawulo yezinto eziyimali	-	-	203	203	204	(1)	100.5%	500	156
4.2 linkonzo zengqesho										
	Utshintshelo nenkxaso-mali	1	-	-	1	-	1	0.0%	1	-
4.3 Uphuhliso lwabasebenzi										
	Utshintshelo nenkxaso-mali	1	-	-	1	-	1	0.0%	1	-
	Isixa-mali sisonke	386,040	-	3,072	389,112	389,112	-	100.0%	366,921	366,447

Uhlelo ngokwezozoqosho		2006/07							2005/06	
		Ulwabiwo-mali olulungelela nisiweyo	Ukushenxis welwa kwezimali kwenye into	Uweliso-mali	Ulwabiwo-mali lokuphetha	Eyona nkcitho	linguqu	Inkcitho njengomyinge wolwabiwomali	Ulwabiwomali lokuphetha	Eyona nkcitho
		R'000	R'000	R'000	R'000	R'000	R'000	%	R'000	R'000
Okuhlawulelweyo ngoku										
	Imbuyekezo yabaqeshwa	305,235	-	2,234	307,469	307,469	-	100.0%	291,574	291,577
	Iimpahla neenkonzo	3,915	-	838	4,753	4,950	(197)	104.1%	3,109	2,979
Utshintshelo nenkxaso-mali										
	Amaphondo noomasipala	190	-	-	190	190	-	100.0%	744	744
	Amaziko angewanzuzo	75,623	-	(173)	75,450	75,448	2	100.0%	69,871	69,868
	Amakhaya	1,077	-	(30)	1,047	851	196	81.3%	1,123	1,123
Iintlawulo yeeasethi eziyimali										
	Izakhiwo nezinye iziseko	-	-	25	25	25	-	100.0%	500	156
	Iimachini nezinye izixhobo	-	-	178	178	179	(1)	100.6%	-	-
	Isixa-mali sisonke	386,040	-	3,072	389,112	389,112	-	100.0%	366,921	366,447

**ISEBE LEMFUNDO LENTSHONA KOLONI
VOTI 5**

Ingxelo yolwabiwo-mali

**linkcukacha ngokwenkqubo 5-Imfundo yezikolo zikarhulumente ezizodwa zonyaka-mali ophele ngomhla
wama-31 Matshi 2007**

Inkqubo ngokwenkqutya nganye	2006/07							2005/06	
	Ulwabi-womali olulungelela nisiweyo	Ukushenxiswelwa kwezimali kwenye into	Uweli-somali	Ulwabi-womali lokuphetha	Eyona nkcitho	linguqu	Inkcitho njengomyinge wolwabiwomali lokuphetha	Ulwabi-womali lokuphetha	Eyona nkcitho
	R'000	R'000	R'000	R'000	R'000	R'000	%	R'000	R'000
5.1 Amaziko karhulumente									
Okuhlawulelwayo	154,774	-	(14,729)	140,045	140,010	35	100.0%	133,541	133,538
Utshintshelo nenkxaso-mali	39,751	-	21,251	61,002	61,038	(36)	100.1%	34,645	34,648
5.2 linkonzo zengqesho									
Utshintshelo nenkxaso-mali	1	-	-	1	-	1	0.0%	1	-
5.3 Uphuhliso lwabasebenzi									
Utshintshelo nenkxaso-mali	1	-	-	1	-	1	0.0%	1	-
5.4 Inkxaso-mali phantsi kwemiqathango									
Utshintshelo nenkxaso-mali	70,000	-	-	70,000	70,000	-	100.0%	-	-
Isixa-mali sisonke	264,527	-	6,522	271,049	271,048	1	100.0%	168,188	168,186

Uhlelo ngokwezozoqosho	2006/07							2005/06	
	Ulwabi-womali olulungelela nisiweyo	Ukushenxiswelwa kwezimali kwenye into	Uweli-somali	Ulwabi-womali lokuphetha	Eyona nkcitho	linguqu	Inkcitho njengomyinge wolwabiwomali lokuphetha	Ulwabi-womali lokuphetha	Eyona nkcitho
	R'000	R'000	R'000	R'000	R'000	R'000	%	R'000	R'000
Okuhlawulelwayo ngoku									
Imbuyekezo yabaqeshwa	154,722	-	(14,729)	139,993	139,993	-	100.0%	133,541	133,538
Iimpahla neenkonzo	52	-	-	52	17	35	32.7%	-	-
Utshintshelo nenkxaso-mali									
Amaphondo noomasipala	87	-	-	87	87	-	100.0%	334	336
Amaziko angewanzuzo	109,310	-	21,251	130,561	130,688	(127)	100.1%	33,904	33,903
Amakhaya	356	-	-	356	263	93	73.9%	409	409
Isixa-mali sisonke	264,527	-	6,522	271,049	271,048	1	100.0%	168,188	168,186

ISEBE LEMFUNDO LENTSHONA KOLONI
VOTI 5

Ingxelo yolwabiwo-mali

linkcukacha ngokwenkqubo 6-Imfundo yezikolo zikarhulumente ezizodwa zonyaka-mali ophele ngomhla wama-31 Matshi 2007

Inkqubo ngokwenkqutya nganye	2006/07							2005/06	
	Ulwabiwo-mali olulungelela nisiweyo	Ukushenxiswelwa kwezimali kwenye into	Uweliso-mali	Ulwabiwo-mali lokuphetha	Eyona nkcitho	linguqu	Inkcitho njengomyinge wolwabiwo-mali	Ulwabiwo-mali lokuphetha	Eyona nkcitho
	R'000	R'000	R'000	R'000	R'000	R'000	%	R'000	R'000
6.1 Inkxaso mali kumaziko azimeleyo abucala									
Okuhlawulelwayo	7,797	-	(1,602)	6,195	6,163	32	99.5%	5,848	5,850
Utshintshelo nenkxaso-mali	15,772	-	1,602	17,374	17,376	(2)	100.0%	17,202	17,201
6.2 linkonzo zengqesho									
Utshintshelo nenkxaso-mali	1	-	-	1	-	1	0.0%	-	-
6.3 Uphuhliso lwabasebenzi									
Utshintshelo nenkxaso-mali	1	-	-	1	-	1	0.0%	-	-
Isixa-mali sisonke	23,571	-	-	23,571	23,539	32	99.9%	23,050	23,051

Uhlelo ngokwezozoqosho	2006/07							2005/06	
	Ulwabiwo-mali olulungelela nisiweyo	Ukushenxiswelwa kwezimali kwenye into	Uweliso-mali	Ulwabiwo-mali lokuphetha	Eyona nkcitho	linguqu	Inkcitho njengomyinge wolwabiwo-mali	Ulwabiwo-mali lokuphetha	Eyona nkcitho
	R'000	R'000	R'000	R'000	R'000	R'000	%	R'000	R'000
Okuhlawulelwayo ngoku									
Imbuyekezo yabaqeshwa	5,948	-	-	5,948	5,916	32	99.5%	5,431	5,432
Iimpahla neenkonzo	1,849	-	(1,602)	247	247	-	100.0%	417	418
Utshintshelo nenkxaso-mali									
Amaphondo noomasipala	3	-	-	3	3	-	100.0%	14	13
Amaziko angewanzuzo	15,771	-	1,602	17,373	17,373	-	100.0%	17,188	17,188
Isixa-mali sisonke	23,571	-	-	23,571	23,539	32	99.9%	23,050	23,051

**ISEBE LEMFUNDO LENTSHONA KOLONI
VOTI 5**

Ingxelo yolwabiwo-mali

**linkcukacha ngokwenkqubo7 -Uphuhliso lwabaqala isikolo kunyaka-mali ophele ngomhla wama-
31 Matshi 2007**

Inkqubo ngokwenkqutya nganye	2006/07							2005/06	
	Ulwabiwo-mali olulungelela nisiweyo	Ukushenxiswelwa kwezimali kwenye into	Uweliso-mali	Ulwabiwo-mali lokuphetha	Eyona nkcitho	linguqu	Inkcitho njengomyinge wolwabiwomali	Ulwabiwomali lokuphetha	Eyona nkcitho
	R'000	R'000	R'000	R'000	R'000	R'000	%	R'000	R'000
7.1 Isigaba R kwizikolo ezixhaswa ngurhulumente									
Okuhlawulelwayo ngokunje	45,450	-	-	45,450	44,402	1,048	97.7%	44,755	44,756
Utshintshelo nenkxaso-mali	6,984	-	15,516	22,500	22,500	-	100.0%	13,391	13,073
7.2 Isigaba R emazikweni oluntu									
Okuhlawulelwayo ngokunje	3,000	-	-	3,000	9	2,991	0.3%	8	8
Utshintshelo nenkxaso-mali	39,499	-	(15,648)	23,851	23,284	567	97.6%	16,642	16,640
7.3 linkonzo zengqesho									
Okuhlawulelwayo ngokunje	-	-	-	-	-	-	-	1	-
Utshintshelo nenkxaso-mali	1	-	-	1	-	1	0.0%	-	-
7.4 Uphuhliso lwabasenbenzi									
Okuhlawulelwayo ngokunje	7,463	-	(6,522)	941	-	941	0.0%	1	-
Utshintshelo nenkxaso-mali	5,000	-	-	5,000	-	5,000	0.0%	-	-
Isixa-mali sisonke	107,397	-	(6,654)	100,743	90,195	10,548	89.5%	74,798	74,477

Uhlelo ngokwezoqoqosho	2006/07							2005/06	
	Ulwabiwo-mali olulungelela nisiweyo	Ukushenxiswelwa kwezimali kwenye into	Uweliso-mali	Ulwabiwo-mali lokuphetha	Eyona nkcitho	linguqu	Inkcitho njengomyinge wolwabiwomali	Ulwabiwomali lokuphetha	Eyona nkcitho
	R'000	R'000	R'000	R'000	R'000	R'000	%	R'000	R'000
Okuhlawulelwayo ngoku									
Imbuyekezo yabaqeshwa	45,249	-	-	45,249	44,390	859	98.1%	43,829	43,829
Iimpahla neenkonzo	10,664	-	(6,522)	4,142	21	4,121	0.5%	936	935
Utshintshelo nenkxaso-mali									
Amaphondo noomasipala	21	-	-	21	28	(7)	133.3%	112	110
Amaziko angewanzuzo	50,429	-	192	50,621	45,619	5,002	90.1%	29,503	29,495
Amakhaya	1,034	-	(324)	710	137	573	19.3%	418	108
Isixa-mali sisonke	107,397	-	(6,654)	100,743	90,195	10,548	89.5%	74,798	74,477

**ISEBE LEMFUNDO LENTSHONA KOLONI
VOTI 5**

Ingxelo yoLwabiwomali

**linkcukacha ngokwenkqubo 8 – linkonzo ezincedisayo nezayamene nazo kunyakamali ophela ngowama –
31 Matshi 2007**

linkcukacha ngokwenkqubo nganye		2006/07							2005/06	
		Ulwabiwo-mali olulungelela nisiweyo	Ukushenxiswelwa kwezimali kwenye into	Uweliso-mali	Ulwabiwo-mali lokuphetha	Eyona nkcitho	linguqu	Inkcitho njengomyinge wolwabiwomali lokuphetha	Ulwabiwomali lokuphetha	Eyona nkcitho
		R'000	R'000	R'000	R'000	R'000	R'000	%	R'000	R'000
8.1	Iintlawulo zeSETA									
	Utshintshelo nenkxasomali	3,756	-	-	3,756	3,756	-	100.0%	3,839	3,306
8.2	Iiprojekthi zenkxasomali phantsi kwemiqathango									
	Okuhlawulelweyo ngokunje	11,870	-	(37)	11,833	11,833	-	100.0%	11,199	11,199
	Utshintsho nenkxasomali	-	-	2	2	2	-	100.0%	6	6
	Intlawulo yeeasethi eziyimali	-	-	37	37	37	-	100.0%	-	-
8.3	Iimvavanyo zangaphandle									
	Okuhlawulelwayo ngoku	62,622	-	379	63,001	63,001	-	100.0%	55,534	54,349
	Utshintshelo nenkxaso-mali	10	-	60	70	69	1	98.6%	111	111
	Intlawulo ye easwathi eziyimali	-	-	53	53	54	(1)	101.9%	101	101
8.4	Uqeqesho lweetitshala									
	Utshintshelo nenkxaso-mali	1,753	-	115	1,868	1,868	-	100.0%	1,743	1,743
8.5	iKapa Elihlumayo									
	Okuhlawulelwayo ngoku	19,000	-	(609)	18,391	12,363	6,028	67.2%	4,555	4,551
	Utshintshelo nenkxaso-mali	99,875	-	7,988	107,863	107,862	1	100.0%	113,760	113,762
	Intlawulo ye easwathi eziyimali	12,500	-	(7,988)	4,512	-	4,512	0.0%	9,457	9,459
	Iyonke	211,386	-	-	211,386	200,845	10,541	95.0%	200,305	198,587

Uhlelo ngokwezoqoqosho	2006/07							2005/06	
	Ulwabiwo- mali olulunge- lela nisiweyo	Ukushenxi swelwa kwezimali kwenye into	Uweliso- mali	Ulwabiwo- mali lokuphetha	Eyona nkcitho	linguqu	Inkcitho njengomy- inge wolwabi- womali lokuphetha	Ulwabi- womali lokuphetha	Eyona nkcitho
	R'000	R'000	R'000	R'000	R'000	R'000	%	R'000	R'000
Intlawulo yangaoku									
Imbuyekezo yabasebenzi	40,064	-	1,257	41,321	41,321	-	100.0%	37,584	37,581
Iimpahla neenkonz	53,428	-	(1,524)	51,904	45,876	6,028	88.4%	33,704	32,518
Utshintshelo nenkxasomali									
Amaphondo noomasipala	10	-	2	12	11	1	91.7%	51	52
Iiarhente zikarhulumente neekhawunti	3,756	-	-	3,756	3,756	-	100.0%	3,839	3,306
Amaziko angengowanzuzo	99,875	-	7,988	107,863	107,862	1	100.0%	113,760	113,761
Households	1,753	-	175	1,928	1,928	-	100.0%	1,809	1,809
Intlawulo yeeasethi eziyimali									
Izakhiwo nezinye izinto ezisisiqxina	12,500	-	(7,898)	4,602	91	4,511	2.0%	9,057	9,057
Iimatshini nezixhobo	-	-	-	-	-	-	0.0%	501	503
Iyonke	211,386	-	-	211,386	200,845	10,541	95.0%	200,305	198,587

**ISEBE LEMFUNDO LENTSHONA KOLONI
VOTI 5**

Amanqaku kwingxelo yolwabiwo-mali yonyakamali ophele ngomhla wama-31Matshi 2007

1. **linkcukacha zogqithiselo-zimali nehxaso-mali ngokomthetho wolwabiwo-mali(emva koweliso lwemali)**
linkcukacha zolu gqithiselo kwinqaku 6(ugqithiselo nenhxaso-mali nakwisihlomelo 1(B-E) kwingxelo-yezimali zonyaka.
2. **linkcukacha zeengxowa-mali ezabiwe ngokukodwa (emva koweliso lwemali):**
linkcukacha zolu gqithiselo zingaqwalaselwa kwinqaku 1(ulwabiwo-mali) kwiingxelo zezimali zonyaka.
3. **linkcazelo zotshintshiselwano ngezimali kwiiasethi namatyala**
linkcukacha zolu gqithiselo zingaqwalaselwa kwinqaku 5 (iinkcukacha zemisebenzi eyodwa nelahleko) kwingxelo zezimali zonyaka
4. **linkcazelo ngokwenguqu kwiimali ezabiweyo zavotelwa (emva koweliso-mali)**
- 4.1 **Ngokwenkqubo nganye:**

	Ulwabiwo-mali lokugqibela	Eyona nkcitho	Umahluko	Umyinge wenguqu kulwabiwo-mali lokugqibela
	R'000	R'000	R'000	%
Ulawulo	292,471	287,714	4,757	2%
Imfundo yezikolo zikarhulumente eziqhelekileyo.	5,793,270	5,623,650	169,620	3%
Inkcazelo ngokuthethwa ziinguqu: Usetyenziso lwemali ngaphantsi kwebibekelwe umsebenzi othile kwenziwa ikakhulu kukufuna ukulondoloza imali ukuze isetyenziswe ukunyusa imivuzo yamaqela ngamaqela abahloli. Indlela yokuhlawula ayizange igqitywe ngowama-31 kuMatshi ka-2007. Kuye kwabakho ukungasebenzisi yonke imali njengoko bekwabike kuhlalo oluyintloko ngenxa yokulibazisa kwezinye izivumelwano zeekontraki kuba ulwakhiwo lwezakhiwo ezithile lungaqhubekanga ngenxa yophando lwefuthe lwesakhiwo kwezokusingqongileyo olungekagqitywa ekusafuneka luqoshelisewe.				
Inkxaso-mali yezikolo ezizimeleyo	34,259	34,259	-	0%
Izikolo zemfundo eyodwa	389,112	389,112	-	0%
Imfundo enabileyo noqeqesho	271,049	271,048	1	0%
Imfundo noqeqesho lwabadala	23,571	23,539	32	0%
Uphuhliso lwabaqala isikolo	100,743	90,195	10,548	10%
Inkcazelo ngokuthethwa ziinguqu: Ukungasebenziseki kwemali ngokulindelekileyo kwenziwe ikakhulu kukulibaziseka ekuthengeni iinkonzo zoqeqesho lwabahloli be-ECD kwiNkqubo yeMisebenzi ka Rhulumente enatyiweyo (EPWP).				
Iinkonzo ezincedisayo nezayamene nazo.	211,386	200,845	10,541	5%
Inkcazelo ngokuthethwa ziinguqu: Ukungasebenziseki kwemali ngokulindelekileyo kwenziwe ikakhulu lunyuso-mgangatho lwezikolo ezitsha ezibini zezakhono nokuphunyezwa kwesicwangciso sokufunda se-WCED.				

Qaphela	2006/07 R'000	2005/06 R'000
Imbuyekezo yabasebenzi	121,197	37,262
Iimpahla neenkonzo	21,724	8,318
Inzala nerente yomhlaba	-	1,141
Izimali kwiiasethi neelayabhlithi	1,115	-
Amaphondo noomasipala	163	150
Iiarhente zikarhulumente neekhawunti	-	533
Amaziko angengowanzuzo	1,742	40
Izindlu	3,821	404
Izakhiwo nezinye izinto ezisisigxina	41,225	4,143
Iimatshini nezixhobo	4,512	3,424

ISEBE LEMFUNDU LENTSHONA KOLONI
VOTI 5

INgxelo yoMsebenzi weziMali yonyaka ophele ngowama-31 Matshi 2007

	INqaku	2006/07 R'000	2005/06 R'000
INGENISO			
Ulwabiwo-mali lonyaka	1.	7,115,861	6,504,659
Ulwabiwo-mali lwenkcitho-mali engagunyaziswanga luphunyeziwe	8.	-	29,456
Ingeniso yesebe	2.	2,014	1,647
ITOTALI YENGENISO		7,117,875	6,535,762
INKCITHOMALI			
Inkcithomali yangoku			
Imbuyekezo yabaqeshwa	3.	5,253,453	4,962,469
Iimpahla neenkonzo	4.	657,411	525,330
Iintengiselwano zezemali kwii-asethi neelahleko	5.	1,087	5,790
Inkcithomali engaphunyezwa iphunyeziwe	8.	-	29,456
ITotali yenkcithomali		5,911,951	5,523,045
Ukhutshelo nezibonelelo			
Inkcithomali kwii-asethi zemali	6.	773,526	661,590
Izakhiwo nezinye iziseko ezibotshiweyo	7.	220,878	270,665
Oomatshini nezixhobo zokusebenza	7.	13,978	20,323
Iimpahla yekhompyutha nezinye ii-asethi ezingaphathekiyo	7.	29	3,077
ITotali yenkcithomali kwii-asethi zemali		234,885	294,065
ITOTALI YENKCITHOMALI		6,920,362	6,478,700
INTSALELA/(ITYALA)			
Ukudibanisa inkcithomali engenaziqhamo neyilahleko	9.	197,513	57,062
INTSALELA/(ITYALA) YONYAKA		197,527	57,062
Ulungelelaniso lweNethi yeNtsalela (iTyala) yonyaka			
iziMali eziza kusiwa kwingxowamali yengeniso	15.	195,513	55,415
Ingeniso yesebe eza kusiwa kwingxowamali yengeniso	16.	2,014	1,647
INTSALELA/(ITYALA) YONYAKA		197,527	57,062

ISEBE LEMFUNDO LENTSHONA KOLONI
VOTI 5

INgxelo yeMeko yeziMali ukususela ngowama-31 Matshi 2007

	INqaku	2006/07 R'000	2005/06 R'000
II-ASETHI			
ii-asethi zangoku		320,211	199,255
Inkcithomali engenaziqhamo neyinkcitho	9.	708	-
Imali eziinkozo nokulingana nayo	10.	244,742	128,834
Okuhlawuleka kwangaphambili	12	430	2,485
Okufumanekayo	13.	74,331	67,936
li-asethi ezingezizo ezangoku		11,008	9,435
Utyalomali	14.	10,190	9,435
Ezinye ii-asethi zezimali	11.	818	-
ITOTALI YEE-ASETHI		331,219	208,690
IILAHLEKO			
lilahleko zangoku		284,483	131,932
Izimali ezivotelweyo eziza kukhutshelwa kwingxowamali yengeniso	15.	195,513	55,415
Ingeniso yesebe eza kusiwa kwingxowamali yengeniso	16.	(214)	(1,702)
I-ovadrfti yebhanki	17.	47,471	54,050
Okuhlawulekayo	18.	41,713	24,169
lilahleko ezingezizo ezangoku			
Okuhlawulekayo	19.	-	26,035
ITOTALI YEELAHLEKO		284,483	157,967
INETHI YEE-ASETHI		46,736	50,723
Imelwe yi:			
Uvimba wee-asethi zemali		10,301	9,546
Ingeniso efumanekayo		36,435	41,177
ITOTALI		46,736	50,723

ISEBE LEMFUNDO LENTSHONA KOLONI
VOTI 5

INgxelo yeeNguqu kwiNethi yee-Asethi yonyaka ophele ngowama-31 Matshi 2007

	INqaku	2006/07	2005/06
		R'000	R'000
Oovimba bee-asethi zemali			
Ibhalansi yokuvula		9,546	8,962
Ukhutshelo		755	584
Ibhalansi yokuvala		<u>10,301</u>	<u>9,546</u>
 Ingeniso efumanekayo			
Ibhalansi yokuvula		41,177	59,641
Ukhutshelo		(4,742)	(18,464)
Amatyala acinyiweyo	5.3	(1,593)	(10,325)
Amatyala ahlawuliweyo (kuquka iirisethi zesebe)		(3,419)	(8,139)
 Ibhalansi yokuvala		<u>36,435</u>	<u>41,177</u>
ITOTALI		<u>46,736</u>	<u>50,723</u>

**ISEBE LEMFUNDO LENTSHONA KOLONI
VOTI 5**

INgxelo yeMali eNgenayo nePhumayo yonyaka ophele ngowama-31 Matsi 2007

	INqaku	2006/07 R'000	2005/06 R'000
IZIMALI EZIPHUMAYO NEZINGENAYO EZIPHUMA KWIMISEBENZI			
Iirisithi		7,139,516	6,546,854
Izimali ezabiweyo ngonyaka ezifunyenweyo	1.1	7,115,861	6,504,659
Ulwabiwo-mali lwenkcithomali engagunyaziswanga olufunyenweyo	8.	-	29,456
Ingeniso yesebe efunyenweyo		23,655	12,739
iNethi yokuhla kwimali eyinkunzi yokusebenza		12,510	26,583
Okusiwe kwingxowamali yengeniso		(77,582)	(82,718)
Iintlawulo zangoku		(5,911,951)	(5,493,589)
Ukhutshelo nezibonelelo ezihlawuliweyo		(773,526)	(661,590)
iNethi yemali engenayo nephumayo ekhoyo ephuma kwimisebenzi	20.	388,967	335,540
IMALI ENGENAYO NEPHUMAYO EPHUMA KWIMISEBENZI YOTYALOMALI			
Iintlawulo zee-aseti zemali		(234,885)	(294,065)
Ukunyuka kutyalomali		(755)	(584)
Ukunyuka kwezinye ii-aseti zemali		(818)	
iNethi yemali enegnayo nephumayo ephuma kwimisebenzi yotyalomali		(236,458)	(294,649)
IMALI ENGENAYO NEPHUMAYO EPHUMA KWIMISEBENZI YEZEMALI			
Ukuhla kwinethi yee-aseti		(3,987)	(17,880)
Ukuhla kokuhlawulekayo okungekuko okwangoku		(26,035)	
iNethi yemali engenayo nephumayo ephuma kwimisebenzi yezemali		(30,022)	(17,880)
iNethi yokuhla kwimali ezinkozo nokulingana nayo		122,487	23,011
Imali ezinkozo nokulingana nayo ekuqaleni kwexesha		74,784	51,773
Imali ezinkozo nokulingana nayo ekupheleni kwexesha	21.	197,271	74,784

**ISEBE LEMFUNDO LENTSHONA KOLONI
VOTI 5**

AManqaku kwiiNgxelo zoNyaka zeziMali zonyaka ophela ngowama-31 Matshi 2007

1. ULwabiwo-mali loNyaka

1.1 ULwabiwo-mali loNyaka

Apha kuqukwe izimali ezabiwe ngokwemigaqo zoMthetho woLwabiwo-mali waMasebe ePhondo (iSabelo esiLinganayo)

	ULwabiwo-mali lokuGqibela 2006/07	Ezona ziMali ziFunyenweyo 2006/07	IZimali ezingacel- wanga/ ezinga- funyenwanga 2006/07	ULwabiwo-mali oluFunyenweyo 2005/06
	R'000	R'000	R'000	R'000
ULawulo	292,471	292,471	-	243,134
Imfundo yesikolo esiqhekileyo sikarhulu	5,793,270	5,793,270	-	5,395,792
Izibonelelo ezikolo ezizimeleyo	34,259	34,259	-	32,471
Imfundo yezikolo ezizodwa zikarhulu	389,112	389,112	-	366,921
Ikholeji zemfundo ethe xhaxhe noqeqe	271,049	271,049	-	168,188
Imfundo yabadala esisiseko noqeqesho	23,571	23,571	-	23,050
Uphuhliso lweentsana zisencinane	100,743	100,743	-	74,798
Iinkonzo ezincedisayo nezinxulumene no	211,386	211,386	-	200,305
ITotali	7,115,861	7,115,861	-	6,504,659

	INqaku	2006/07 R'000	2005/06 R'000
1.2 Izibonelelo zeemeko ezithile**			
iTotali yezibonelelo ezifunyenweyo	iSihlom A	257,012	143,091
Zibonelelo zephondo eziqukwe kwitotali yezibonelelo		-	-
** (Makuqatshelwe ukuba izibonelelo zeeMeko ezithile ziyayukwa kwizixamali ngokweNqaku leTotali yoLwabiwo-mali 1.1)			

2. Ingeniso ysebe eza kusiwa kwingxowamali yengeniso

Iintengiso zeempahla neenkonzo ngapahandle kwee-sethi zemali	2.1	8,539	5,412
Imidliwo, izohlwayo nokulahlekileyo		350	180
Inzala, izahlilo nerente emhlabeni	2.2	1,561	2,163
Intengiselwano yezemali kwii-sethi neelahleko	2.3	13,205	4,984
ITotali yengeniso eqokelelweyo		23,655	12,739
Ngaphantsi: Ingeniso yesebe ehlahlelwe imali*	16.	21,641	11,092
ITotali		2,014	1,647

ISEBE LEMFUNDO LENTSHONA KOLONI
VOTI 5

INqaku kwiiNgxelo zoNyaka zeziMali zonyaka ophele ngowama-31 Matshi 2007

	INqaku	2006/07 R'000	2005/06 R'000
2.1 Iintengiso zeempahla neenkonzo ezingezizo ii-asethi zemali			
Iintengiso neenkonzo eziveliswe lisebe		8,516	5,401
Ezinye iintengiso		8,516	5,401
Iintengiso zezikrephu, okungafunekiyo nezinye iimpahla ezisetyenzisiweyo zangoku		23	11
ITotali		8,539	5,412
2.2 Inzala, izahlulo nerente emhlabeni nakwizakhiwo			
Inzala		1,561	2,163
ITotali		1,561	2,163
2.3 Iintengiselwano zezimali kwii-asethi neelahleko			
Ubume belahleko efunyenweyo			
Okufumanekayo		3,942	3,164
Ezinye iiRisithi kuquka ingeniso efumanekayo		9,263	1,820
ITotali		13,205	4,984
3. Imbuyekezo yabaqeshwa			
3.1 IMivuzo neeWeyijisi			
Umvuzo osisiseko		4,081,112	3,859,786
Imbasa yomsebenzi		5,985	17,349
Esekelezwe kwinkonzo		9,188	9,094
Eyembuyekazo/eyameeko ezithile		41,040	35,444
Iintlawulo zamaxesha athile		2,573	4,891
Ezinye izibonelelo ezingezizo ezomhlalaphantsi		414,988	385,391
ITotali		4,554,886	4,311,955
3.2 Amagalelo ezentlalo			
3.2.1 Amagalelo omqeshi			
Umhlalaphantsi		464,546	424,542
Unyango		233,048	224,994
Ibhunga leengxoxo		430	430
Iimanyano nemibutho esemthethweni		543	548
ITotali		698,567	650,514
ITotali yembuyekazo yabaqeshwa		5,253,453	4,962,469
I-avareji yenani labaqeshwa		38,263	38,693

ISEBE LEMFUNDO LENTSHONA KOLONI
VOTI 5

AManqaku kwiiNgxelo zoNyaka zeziMali zonyaka ophele ngowama-31 Matshi 2007

	INqaku	2006/07 R'000	2005/06 R'000
4. Iimpahla neenkonzo			
Ukuthengisa		2,446	2,119
Imirhumo yokuzimasa (kuquka imirhumo yobhaliso)		178	14
Iintlawulo zebhanki nemirhumo yamakhadi		996	1,017
Iibhasari (abaqeshwa)		1,462	1,168
Unxibelelwano		9,724	8,861
Iinkonzo ezizodwa		2,257	-
Abacebisi, iikontraka neenkonzo ezizodwa		40,197	31,240
Iinkonzo zokuthutha nokuhambisa		3,515	2,623
Ukulanda umkhondo wee-arhente noqokelelo lwamatyala		302	-
Iilayisenisi zokuqhuba neemvume		-	307
Ulonwabo		190	159
Imirhumo yophicotho lwangaphandle	4.1	6,136	5,070
Izixhobo ezingeneno kwama-R5000		4,200	11,762
Iinkonzo yokulayisha		-	56
Uluhlu lweempahla	4.2	272,320	194,743
Imirhumo yezomthetho		2,137	2,396
Ulonolozo, ulungiso nendleko yokuqhuba		112,665	84,167
Ukuqhuba uqashiso		11,268	10,305
Ukutyala iintyatyambo nezinye izihombisi		46	2
Ushicilelo nopapasho		9,652	8,309
Amaqumrhu eengcali nemirhumo yobulungu		5,559	5,606
Iindleko zokufunduka		426	882
Imirhumo yobulungu		471	221
Inkcithomali yepropathi eqashisiweyo ephantsi kobunini		15,956	17,190
Uguqulelo lweelwimi nobhalo-shicilelo		500	760
Ezothutho zibonelelwe njenegxalenye yemisebenzi yesebe		93,660	95,428
Uhambo nesibonelelo	4.3	38,197	25,613
Iindawo nezibonelelo		16,718	12,301
Iimpahla ekhuselayo, eyodwa neeyunifomu		167	116
Uqeqesho nophuhliso lwesitafu		6,066	2,895
ITotali		657,411	525,330
4.1 Imirhumo yophicotho lwangaphandle			
Uphicotho lomiselwano		4,379	4,996
Uphicotho lomsebenzi		1,294	4
Olunye uphicotho		463	70
ITotali yemirhumo yophicotho lwangaphandle		6,136	5,070

ISEBE LEMFUNDU LENTSHONA KOLONI
VOTI 5

Iinkcukacha zeeNgxelo zeMali zoNyaka zonyaka owaphela ngowama-31 Matshi 2007

	Ulwazi	2006/07 R'000	2005/06 R'000
4.2 Uluhlu lwempahla			
Izinto ezisetyenziswa emakhaya		191	95
Izixhobo zenkxaso yokufunda nokufundisa		216,860	147,339
Ukutya nonikezelo ngokutya		38,992	36,741
Ezinye izinto ezisetyenziswayo		25	20
Izixhobo zokubhala nozokushicilela		16,252	10,548
Zizonke izintlu zempahla		272,320	194,743
4.3 Iindleko zokuhamba nokuphila			
Kwingingqi		37,052	25,264
Kwamanye amazwe		1,145	349
Zizonke iindleko zokuhamba nokuphila		38,197	25,613
5. Unaniselwano lwezemali kwimpahla neemfanelo			
Ezinye iimpahla ezilahlekileyo nezicinyiweyo	5.1	152	3,202
Amatyala acinyiweyo	5.2	935	2,588
Zizonke		1,087	5,790
5.1 Ezinye iimpahla ezilahlekileyo nezicinyiweyo			
Ubume belahleko			
Iingozi ze-GG		144	525
Amabango kurhulumente		8	2,677
Zizonke		152	3,202
5.2 Amatyala acinyiweyo			
Ubume bamatyala acinyiweyo			
Amatyala adlulisweyo acinyiweyo			
Irhafu yabasebenzi		4	44
Iziqinisekiso zikarhulumente		62	613
Ukuhlawulwa ngokugqithisileyo kwemivuzo yabasebenzi		245	1,455
Ezinye		524	464
Inkxaso-mali yokufunda		1	12
Inzala yamatyala		99	-
Zizonke		935	2,588

ISEBE LEMFUNDO LENTSHONA KOLONI
VOTI 5

linkcukacha zeeNgxelo zeMali zoNyaka zonyaka owaphela ngowama-31 Matshi 2007

	Ulwazi	2006/07 R'000	2005/06 R'000
5.3 Imali engafumanekanga ecinyiweyo			
Imali efunyenweyo ecinyiweyo		1,593	10,325
Amatyala emivuzo		123	772
Amatyala enxaso-mali yokufunda		1,241	8,950
Ezinye		229	603
Zizonke		1,593	10,325
6. Imali enikezelweyo nenxaso-mali			
Amaphondo noomasipala	iSihlomelo 1B	3,330	12,857
Ii-arhente zeSebe namatyala	iSihlomelo 1C	3,756	3,306
Amaziko angenzi nzuzo	iSihlomelo 1D	746,628	620,954
Amakhaya	iSihlomelo 1E	19,812	24,473
Zizonke		773,526	661,590
7. Inkcitho-mali kwimpahla yemali eyinkunzi			
Izakhiwo nezinye izakheko ezisigxina	31.	220,878	270,665
Oomatshini nezixhobo	31.	13,978	20,323
Izixhobo zeekhompyutha nezinye iimpahla ezingaphathekiyo		29	3,077
Iinkqubo zeekhompyutha	32.	29	3,077
Zizonke		234,885	294,065
8. Inkcitho-mali engagunyaziswanga			
Imali ekhoyo ekuqaleni		-	29,456
Ixabiso elamkelwe yiPalamente/yindlu yoWiso-mthetho (ngaphandle kwenxaso-mali)		-	(29,456)
Iyonke		-	-
9. Inkcitho-mali engenamsebenzi neyinkcitho			
9.1 Indibanisela yencitho-mali engenamsebenzi neyinkcitho			
Inkcitho-mali engenamsebenzi neyinkcitho – phambi kokuqala konyaka		694	
Ekhoyo		694	
Inkcitho-mali engenamsebenzi neyinkcitho – kunyaka omiyo		14	-
Ekhoyo		14	-
Inkcitho-mali engenamsebenzi neyinkcitho – elindele ukwamkelwa		708	-

ISEBE LEMFUNDO LENTSHONA KOLONI
VOTI 5

linkcukacha zeeNgxelo zeMali zoNyaka zonyaka owaphela ngowama-31 Matshi 2007

	Ulwazi	2006/07 R'000	2005/06 R'000
9.2 Uphicotho lwenkcitho-mali engenamsebenzi neyinkcitho ekhoyo			
Isiganeko	Amanyathelo oluleko athathiweyo/izimangalo zolwaphulo-mthetho		
VLS 03224	Ziyaqhutywa	-	
VLS 04716	Ziyaqhutywa	-	
VLS 04868	Ziyaqhutywa	1	
VLS 04869	Ziyaqhutywa	4	
VLS 04871	Ziyaqhutywa	10	
VLS 04956	Ziyaqhutywa	-	
VLS 04915	Ziyaqhutywa	4	
VLS 04967	Ziyaqhutywa	1	
VLS 04923	Ziyaqhutywa	14	
VLS 05089	Ziyaqhutywa	674	
		708	-
10. Imali nemilinganiselo yemali			
Imali ekhoyo		-	3
Imali ekwiibhanka zorhwebo (kwingingqi)*		244,742	128,831
Iyonke		244,742	128,834
<p>* "Imali ekwiibhanka zorhwebo" imele imali engafunyanwanga lisebe ukuba isetyenziswe kwangoku yaye ityalwe yi-ofisi kaNondyebo wePhondo kwiibhanka zorhwebo ezohlukeneyo. Inzala efunyenwekolu tyalo-mali iboniswe kwiingxelo zemali zeNkxaso-mali yeRhafu yePhondo.</p>			
11. Ezinye impahla zenkxaso-mali			
Ezingekabikho			
Kwingingqi			
Kumasebe angaphambili: Ezongezelelekayo		818	-
Zizonke		818	-
Zizonke ezinye impahla zenkxaso-mali ekhoyo		818	-
12. Intlawulo ebuyisiweyo nentlawulo eyenziwa kwangaphambili			
Inkcazelo			
Iindleko zokuhamba nokuphila		381	518
Intlawulo eyenziwa kwangaphambili kweminye imibutho		49	1,967
Zizonke		430	2,485

**ISEBE LEMFUNDO LENTSHONA KOLONI
VOTI 5**

linkcukacha zeeNgxelo zeMali zoNyaka zonyaka owaphela ngowama-31 Matshi 2007

					Ulwazi	2006/07	2005/06
						R'000	R'000
13	Impahla efunyenweyo						
		Ulwazi	Ezinga- phantsi konyaka omnye	Ezinonyaka omnye ukuya kwemi- thathu	Ezinga- phezu kwemin- yaka emithathu	Zizonke	Zizonke
	Amakhaya namaziko angenzi nzuzo	13.1	7,399	5,389	-	12,788	3,888
	Amatyala abasebenzi	13.2	8,997	8,354	857	18,208	11,171
	Abanye abanamatyala	13.3	1,560	8,431	26,707	36,698	41,508
	Impahla efunyenweyo kumacandelo karhulumente angaphakathi	Annex 3	2,135	1,258	3,244	6,637	11,369
	Zizonke		20,091	23,432	30,808	74,331	67,936
					Ulwazi	2006/07	2005/06
						R'000	R'000
13.1	Amakhaya namaziko angenzi nzuzo						
	Ukutsalwa kwemivuzo: izindlu					1,709	1,072
	Iindleko eziziintlobo ngeentlobo					106	2,816
	Ezingavumelekanga: Umonakalo neziLahlekileyo					4,650	-
	Imivuzo: Irhafu yengeniso					1,230	-
	Ezingavumelekanga: eziziintlobo ngeentlobo					2,168	-
	Imivuzo: iintlawulo ze-ACB					1,389	-
	ezingalindelekanga: Ilahleko zemali yorhwebo ze-CPRS					1,536	-
	Zizonke					12,788	3,888
13.2	Amatyala abasebenzi						
	Iintlawulo ezigqithisileyo zabasebenzi					8,852	3,597
	Ii-akhawunti zamatyala					9,356	7,574
	Zizonke					18,208	11,171
13.3	Abanye abanamatyala						
	Ukwaphulwa kwezivumelwano					23,133	30,475
	Abasebenzi bangaphambili					8,150	6,961
	Iziqinisekiso zikarhulumente					1,171	1,067
	Izenzo zolwaphulo-mthetho					2,024	1,996
	Eziziintlobo ngeentlobo					2,220	1,009
	Ewonke					36,698	41,508

ISEBE LEMFUNDO LENTSHONA KOLONI
VOTI 5

linkcukacha zeeNgxelo zeMali zoNyaka zonyaka owaphela ngowama-31 Matshi 2007

	Ulwazi	2006/07 R'000	2005/06 R'000
14. Utyalo-mali			
Olungakhoyo			
Izabelo nezinye zobulungisa			
Inkxaso-mali yezakhiwo zezikolo		9,792	9,053
Inkxaso-mali ye-JL Bisset		313	292
Inkxaso-mali ye-Royal Reception		34	36
Inkxaso-mali ye-Graham Civil Service		42	42
Sir David Harris Trust		9	12
Iyonke ekhoyo		10,190	9,435
 Uphicotho lotyalo-mali olungekhoyo			
Imali ebekiweyo ekuqaleni		9,435	8,851
Imali eyongeziweyo		755	584
Imali ekhoyo okokugqibela		10,190	9,435
 15. Inkxaso-mali eyamkelweyo neza kunikezelwa kwinkxaso-mali yerhafu			
Imali ebekiweyo ekuqaleni		55,415	66,536
Edluliselwe kwiNgxelo yoMsebenzi weMali		195,513	55,415
Ehlawulwe kulo nyaka		(55,415)	(66,536)
Imali ekhoyo okokugqibela		195,513	55,415
 15.1 Inkxaso-mali eyamkelweyo engacelwanga/engafunyanwanga			
Imali eza kunikezelwa		197,527	57,060
 16. Ingeniso yesebe eza kunikezelwa kwinkxaso-mali yengeniso			
Imali ebekiweyo ekuqaleni		(1,702)	1,741
Edluliselwe kwiNgxelo yoMsebenzi weMali		2,014	1,647
Ingeniso yesebe ecwangcisiweyo		21,641	11,092
Ehlawuliweyo kulo nyaka		(22,167)	(16,182)
Imali ekhoyo okokugqibela		(214)	(1,702)
 17. Imali esileleyo ebhankini			
I-akhawunti edityanisiweyo Jikelele yoMhlawulisi-mali		47,471	54,050
Iyonke		47,471	54,040

ISEBE LEMFUNDO LENTSHONA KOLONI
VOTI 5

linkcukacha zeeNgxelo zeMali zoNyaka zonyaka owaphela ngowama-31 Matshi 2007

		Ulwazi	2006/07 R'000	2005/06 R'000
18.	Emele ukuhlawulwa – ekhoyo			
	Inkcazelo		2006/07	2005/06
		Ulwazi	lintsuku ezingama-30 R'000	30+ iintsuku R'000
			Zizonke R'000	Zizonke R'000
	Amatyala ahlawulweyo	18.1	2,111	39,602
	Ewonke		2,111	39,602
		Ulwazi	2005/06 R'000	2004/05 R'000
18.1	Amatyala ahlawulweyo			
	Inkcazelo			
	Engavumelekanga ezintlobo		2,392	2,308
	Ukutsalwa kwemivuzo: ingxowa-mali yomhlala-phantsi		-	4,615
	Ezinye (iintlawulo ze-WCCE & ABC zangaphambili)		4,558	3,168
	Intlawulo phambi kwexesha kwiNtshona Koloni		5,152	10,005
	Amanye amatyala atsaliweyo		2,653	55
	Ukutsalwa kwemivuzo: irhafu yengeniso		-	3,384
	Ukutsalwa kwemivuzo: inkxaso-mali yonyango		-	634
	Amasebe angaphambili akhulayo: Imali eyinkunzi yorhwebo		26,958	-
	Iyonke		41,713	24,169
19.	Emele ukuhlawulwa – engekho			
	Inkcazelo			
		Ulwazi	Unyaka omnye nemibini R'000	Iminyaka emibini nemithathu R'000
			Ngaphezu kweminyaka emithathu R'000	Iyonke R'000
	Enye emele ukuhlawulwa	19.1	-	-
	Iyonke		-	26,035
19.1	Enye emele ukuhlawulwa			
	Inkcazelo			
	Amasebe angaphambili: ekhulayo – inkxaso-mali eyamkelweyo eza kunikezelwa			613
	Amasebe angaphambili: ekhulayo – I-akhawunti yorhwebo ye-CPRS			25,422
	Iyonke			26,035

ISEBE LEMFUNDO LENTSHONA KOLONI
VOTI 5

linkcukacha zeeNgxelo zeMali zoNyaka zonyaka owaphela ngowama-31 Matshi 2007

	Ulwazi	2006/07 R'000	2005/06 R'000
20. Imali engenayo efunyenwe kwimisebenzi ekhoyo			
Ingeniso/(intsilelo) ngokweNgxelo yokuSetyenziswa kweMali		197,527	57,062
Ebuyiselweyo kwiintshukumo ezingeyomisebenzi		191,440	278,478
Eyongezwe kwefunyenweyo – ekhoyo		(6,395)	26,122
Ecuthiweyo kwiintlawulo nakwehlawulwa kwangaphambili		2,055	(2,067)
Eyongezwe kwimpahla ekhoyo		(708)	
Ukongezwa kwentlawulo efanelekileyo – ekhoyo		17,544	2,528
Inkcitho-mali yempahla eyinkunzi		234,885	294,065
Enikezelwe kwinkxaso-mali yengeniso		(77,582)	(82,718)
Ezinye impahla ezingeyomali		21,641	40,548
Iyonke imali eyenziwe ngemisebenzi ekhoyo		388,967	335,540
21. Indibanisela yemali yeenjongo zokwenza imali			
I-akhawunti edityanisiweyo Jikelele yoMhlawulisi-mali		(47,471)	(54,050)
Imali ekhoyo		-	3
Imali ekwiibhanka zorhwebo - kwingingqi		244,742	128,831
Iyonke		197,271	74,784

ISEBE LEMFUNDO LENTSHONA KOLONI
VOTI 5

linkcukacha eziveziweyo zeeNgxelo zeMali zonyaka owaphela ngowama-31 Matshi 2007

La maxabiso akamkelwanga kwiingxelo zemali zonyaka yaye avezwa ngenjongo yokuxhasa ukubaluleka kweengxelo zemali zonyaka.

		Ulwazi	2006/07 R'000	2005/06 R'000	
22.	Imfanelso zezinto ezisileleyo				
	Imele ukuhlawulwa kwi-Ubume				
	Iziqinisekiso zemali-mboleko yezindlu	Abasebenzi iSihlomelo 2A	65,390	44,047	
	Amabango kwisebe	iSihlomelo 2B	26,409	13,795	
	Amanye amasebe (imali ekhoyo kwamanye amasebe engaqinisekiswa)	iSihlomelo 4	2,573	156	
	Iyonke		94,372	57,998	
23.	Izibophelelo				
	Inkcitho-mali ekhoyo				
	Eyamkelweyo nevunywe kwixesha elithile		275,729	276,474	
	Eyamkelweyo kodwa engavunywanga kwixesha elithile		5,423	98,507	
			281,152	374,981	
	Inkcitho-mali engekho				
	Eyamkelweyo nevunywe kwixesha elithile		113,770	93,231	
	Eyamkelweyo kodwa engavunywanga kwixesha elithile		33,582	186,245	
			147,352	279,476	
	Zizonke izibophelelo		428,504	654,457	
24.	Eyongezelelekileyo				
	Zidweliswe ngokwezintlu zoqoqosho				
		30 iintsuku R'000	30+ iintsuku R'000	Zizonke R'000	Zizonke R'000
	Imbuyekezo yabasebenzi	98	17	115	17
	Impahla neenkonzo	7,935	599	8,534	6,838
	Enikezelweyo nenkxaso-mali	1,015	4,014	5,029	-
	Eyezakhiwo nezakheko ezisigxina	2,726	1,048	3,774	2,386
	Oomatshini nezixhobo	-	-	-	43
	Impahla yeenkqubo zekhompyutha nezinye ezingaphathekiyo	-	124	124	-
	Ezinye	1	11	12	-
	Zizonke	11,775	5,813	17,588	9,284
	Zidweliswe ngokomgangatho wenkqubo				
	Inkqubo 1			2,562	2,717
	Inkqubo 2			10,970	5,011
	Inkqubo 4			13	-
	Inkqubo 5			49	-
	Inkqubo 7			19	-
	Inkqubo 8			3,975	1,556
	Zizonke			17,588	9,284
	Imali ekhoyo eqinisekiswa namanye amasebe		isihlomelo 4	115	1
	Zizonke			115	1

ISEBE LEMFUNDO LENTSHONA KOLONI
VOTI 5

linkcukacha eziveziweyo zeeNgxelo zeMali zonyaka owaphela ngowama-31 Matshi 2007

	Ulwazi	2006/07 R'000	2005/06 R'000		
25.	Izibonelelo zenzuzo yabasebenzi				
	Ilungelo lekhefu	47,958	46,500		
	Intlawulo eyongezelelweyo	174,102	159,020		
	Ibhaso lomsebenzi	-	38		
	Izibophelelo zekhefu ezilinganiselweyo	791,511	783,054		
	Zizonke	1,013,571	988,612		
26.	Izibophelelo zengqeshiso				
	Umhlaba	Izakhiwo nezakheko ezisigxina	Oomatshini nezixhobo	Zizonke	
	R'000	R'000	R'000	R'000	
26.1	Iingqeshiso zokusebenza				
	2006/07				
	Ngaphantsi konyaka omnye (1)	-	342	4,469	4,811
	Ngaphantsi konyaka omnye (1) neminyaka emi-5	-	1,367	1,376	2,743
	Lilonke ixabiso elikhoyo leemfanelo zengqeshiso	-	1,709	5,845	7,554
	2005/06				
	Ngaphantsi konyaka omnye (1)	-	462	-	462
	Ngaphantsi konyaka omnye (1) neminyaka emi-5	-	-	6,402	6,402
	Lilonke ixabiso leemfanelo zengqeshiso	-	462	6,402	6,864
27.	Inkcitho-mali engaqhelekanga				
27.1	Indibanisela yenkcitho-mali engaqhelekanga				
	Imali ekhoyo ekuqaleni			1,578	-
	Inkcitho-mali engaqhelekanga – kulo nyaka			3,034	1,578
	Inkcitho-mali engaqhelekanga emele ukwamkelwa			4,612	1,578
	Uphicotho lwemali eyamkelweyo kudidi ngalunye				
	Inkcitho-mali ekhoyo			4,612	1,578
				4,612	1,578
	Uphicotho lwemali eyamkelweyo kudidi ngalunye ngokweminyaka				
	Ekhoyo			3,034	1,578
	Kwiminyaka engaphambili			1,578	-
	Iyonke			4,612	1,578

ISEBE LEMFUNDO LENTSHONA KOLONI
VOTI 5

Amanqaku okuchaza kwiiNgxelo zoNyaka zeZimali zonyaka ophela ngomhla wama 31 Matshi 2007

	Inqaku	2006/07 R'000	2005/06 R'000
27.2 Inkcitho engaqhelekanga			
Isiganeko	Amanyathelo oluleko athatyathweyo/ iinkqubo zomthetho		
Unyaka ongaphambili			
VLS 04989 MD Martin	Uphando lusaqhutywa	-	9
VLS 04990 S&F Christians	Uphando lusaqhutywa	-	19
VLS 04991 S Chilwan Coachlines	Uphando lusaqhutywa	-	23
VLS 04992 M America	Uphando lusaqhutywa	-	22
VLS 04993 JBS Transport	Uphando lusaqhutywa	-	11
VLS 04994 D Adams Bus Service	Uphando lusaqhutywa	-	40
VLS 04995 J Pistorius	Uphando lusaqhutywa	-	7
VLS 04996 J Pistorius	Uphando lusaqhutywa	-	26
VLS 04997 CMA Jacobs	Uphando lusaqhutywa	-	16
VLS 04998 CMA Jacobs	Uphando lusaqhutywa	-	31
VLS 04999 GJ Botha	Uphando lusaqhutywa	-	62
VLS 05000 S Chilwan Coachlines	Uphando lusaqhutywa	-	85
VLS 05001 Vergotine Transport	Uphando lusaqhutywa	-	90
VLS 05002 Simpsons Bus Service	Uphando lusaqhutywa	-	103
VLS 05003 Hanekoms Bus Service	Uphando lusaqhutywa	-	171
VLS 05004 JG Gaffleys	Uphando lusaqhutywa	-	192
VLS 05005 JG Gaffleys	Uphando lusaqhutywa	-	220
VLS 05006 JG Gaffleys	Uphando lusaqhutywa	-	43
VLS 05007 JG Gaffleys	Uphando lusaqhutywa	-	6
VLS 05008 Munniks Intertown Coaches	Uphando lusaqhutywa	-	402
Kulo nyaka			
VLS 05010 E Dijebe	Uphando lusaqhutywa	23	-
VLS 05011 Pers en Seuns	Uphando lusaqhutywa	41	-
VLS 05012 Kobus Kruger Vervoer	Uphando lusaqhutywa	3	-
VLS 05017 J Pistorius	Uphando lusaqhutywa	16	-
VLS 05018 F Christiaans	Uphando lusaqhutywa	47	-
VLS 04841 Independent Newspapers	Uphando lusaqhutywa	22	-
VLS 04833 Schools Choral Eisteddfod	Uphando lusaqhutywa	31	-
VLS 04843 I Can Communications	Uphando lusaqhutywa	178	-
Adult Basic Education And Training	Uphando lusaqhutywa	477	-
B/WCED 452/06	Uphando lusaqhutywa	83	-
B/WCED 638/08	Uphando lusaqhutywa	461	-
13/2/8/17/2/1/T066	Uphando lusaqhutywa	98	-
13/2/8/17/2/1/T509	Uphando lusaqhutywa	248	-
13/2/8/17/2/1/T063	Uphando lusaqhutywa	1306	-
Iyonke		3,034	1,578

ISEBE LEMFUNDO LENTSHONA KOLONI
VOTI 5

Amanqaku okuchaza kwiiNgxelo zoNyaka zeZimali zonyaka ophele ngomhla wama 31 Matshi 2007

	Inqaku	2006/07 R'000	2005/06 R'000
28. Unaniselwano namaqela anolwalamano			
Ngokwenkcazo yamaqela anolwalamano, izikolo zikawonkewonke eziqhelekileyo zithathwa njengeqela elinolwalamano yaye unaniselwano nazo luchazwa phantsi kweSihlomelo 1D			
29. Abasebenzi abangundoqo bolawulo			
Inkcazo	Inani labantu		
Abanezikhundla zee-ofisi zopolitiko (MEC)	1	792	742
Inqanaba 15 ukuya 16	4	3,259	3,057
Inqanaba 14	6	3,654	3,026
Bebonke		7,705	6,825
30. Izibonelelo			
Amatyala anokungahlawuleki			
Abasebenzi abatyalwayo		857	583
Abanye abatyalwayo		26,707	32,005
Amabango abuyekwayo		3,244	9,391
Iyonke		30,808	41,979

Izixa-mali malunga namatyala anokungahlawuleki zisekelwe kumatyala abudala bungaphezu kweminyaka emi 3 njengoko kubonakalisiwe kwiNqaku 13 kwiiNgxelo zeZimali zo"Kuzuziweyo". NgokoMthetho wokuMisela 68 ka 1969 amatyala amaninzi aya kumiselwa emva kwethuba leminyaka emi 3.

31. IPahla ePhathekayo yeMali

Intshukumo kwimpahla ephathekayo yemali ngokwerejista yempahla yonyaka ophele ngomhla wama 31 Matshi 2007

	Intsalela R'000	Uhlengahlen- giso lwalo nyaka ukuya kwiintsalela zonyaka ongaphambili R'000	Okongezelel- weyo R'000	Okuchihiweyo R'000	Intsalela yokuvala R'000
Izakhiwo nezinye iziseko ezimiyo	-	-	134,474	134,474	-
Izakhiwo ezingezizo zakuhlala	-	-	134,474	134,474	-
Oomatshini nezixhobo	25,340	1,712	13,984	5,770	35,266
Impahla yothutho	-	-	815	802	13
Izixhobo zeekhompyutha	23,155	821	7,565	4,865	26,676
Ifenitshala nezixhobo zee-ofisi	2,185	891	5,512	11	8,577
Abanye oomatshini nezixhobo	-	-	92	92	-
Iyonke impahla ephathekayo	25,340	1,712	148,458	140,244	35,266

ISEBE LEMFUNDO LENTSHONA KOLONI
VOTI 5

Amanqaku okuchaza kwiiNgxelo zoNyaka zeZimali zonyaka ophela ngomhla wama 31 Matshi 2007

31.1 Okongezelelwe kwimpahla ephathekayo eyinkunzi ngokwerejista yempahla yonyaka ophela ngomhla wama 31 Matshi 2007

	Imali eziinkozo	Engezon-kozo	(Umsebenzi wemali oqhubayo – lindleko ezikhoyo)	Inzuzo yalo nyaka, engahlawulwanga (Ehlawulweyo kulo nyaka, inzuzo kunyaka ongaphambili)	Iyonke
	R'000	R'000	R'000	R'000	R'000
Izakhiwo nezinye iziseko ezimiyo	220,878	112,649	(199,053)	-	134,474
Izakhiwo ezingezo zakuhlala	220,878	112,649	(199,053)		134,474
Oomatshini nezixhobo	13,978	13	-	(7)	13,984
Impahla yothutho	802	13	-		815
Izixhobo zeekhompyutha	7,572	-	-	(7)	7,565
Ifenitshala nezixhobo zee-ofisi	5,512	-	-	-	5,512
Abanye oomatshininezixhobo	92	-	-	-	92
Iyonke impahla yemali	234,856	112,662	(199,053)	(7)	148,458

31.2 Ukuchithwa kwempahla ephathekayo yemali ngokwerejista yempahla yonyaka ophela ngomhla wama 31 Matshi 2007

	Imali eziinkozo	Engezon-kozo	Iyonke	Imali eziinkozo
	R'000	R'000	R'000	R'000
Izakhiwo nezinye iziseko ezimiyo	-	134,474	134,474	-
Izakhiwo ezingezo zakuhlala	-	134,474	134,474	-
Oomatshini nezixhobo	-	5,770	5,770	-
Impahla yothutho	-	802	802	-
Izixhobo zeekhompyutha	-	4,865	4,865	-
Ifenitshala nezixhobo zee-ofisi	-	11	11	-
Abanye oomatshini nezixhobo	-	92	92	-
Iyonke	-	140,244	140,244	-

31.3 Intshuku ngempahla ephathekayo yemali ngokwerejista yempahla yonyaka ophela ngomhla wama 31 Matshi 2006

	Intsalela yokuvula	Okongezelelweyo	Okuchithiweyo	Intsalela yokuvula
	R'000	R'000	R'000	R'000
Izakhiwo nezinye iziseko ezimiyo	-	270,665	270,665	-
Izakhiwo ezingezo zakuhlala	-	270,665	270,665	-
Oomatshini nezixhobo	20,578	20,377	15,615	25,340
Izixhobo zeekhompyutha	18,752	4,403	-	23,155
Ifenitshala nezixhobo zee-ofisi	1,826	359	-	2,185
Abanye oomatshini nezixhobo	-	15,615	15,615	-
Iyonke impahla ephathekayo	20,578	291,042	286,280	25,340

ISEBE LEMFUNDO LENTSHONA KOLONI
VOTI 5

Amanqaku okuchaza kwiiNgxelo zoNyaka zeZimali zonyaka ophele ngomhla wama 31 Matshi 2007

32. Impahla engaphathekiyo yemali

Intshukumo ngempahla engaphathekiyo yemali ngokweregista yempahla yonyaka ophele ngomhla wama 31 Matshi 2007

	Intsalela yokuvula	Uhlengahlen-giso lwalo nyaka ukuya kwiintsalela zonyaka	Okongeze- lelweyo	Okuchithiweyo	Intsalela yokuvala
	R'000	R'000	R'000	R'000	R'000
Izixhobo zekhompyutha	130	-	29	-	159
Iyonke impahla engaphathekiyo	130	-	29		159

32.1 Okongezelelweyo kwimpahla engaphathekiyo yemali ngokweregista yempahla yonyaka ophele ngomhla wama 31 Matshi 2007

	Imali eziinkozo	Engazonkozo	(Umsebenzi wophuhliso oqhubayo – iindleko ezikhoyo)	Inzuzo yalo nyaka, engahlawulwanga (Ehlawulweyo kulo nyaka, inzuzo yonyaka ongaphambili)	Iyonke
	R'000	R'000	R'000	R'000	
Izixhobo zeekhompyutha	29	-	-	-	29
Iyonke	29	-	-	-	29

32.2 Ubume bentshukumo yempahla engaphathekiyo bonyaka ophele ngomhla wama 31 Matshi 2006

	Intsalela yokuvula	Okongezelelweyo	Okuchithiweyo	Intsalela yokuvala
	R'000	R'000	R'000	R'000
Izixhobo zekhompyutha	96	3,077	3,043	130
Iyonke impahla engaphathekiyo	96	3,077	3,043	130

**ISEBE LEMFUNDO LENTSHONA KOLONI
VOTI 5**

Isihlomelo kwiiNgxelo zoNyaka zeZimali zonyaka ophele ngomhla wama 31 Matshi 2007

**ISihlomelo 1A
INGXELO YEZIBONELELO EZINEMIQATHANGO EZIZUZIWEYOED**

IGAMA LESEBE:	UKWABELWA KWESIBONELELO					SPENT			2005/06	
	UMthetho woLwabiwo lweNgeniso	Egqithise lweyo	Uhlengahleng iso lweDORA	Olunye uhlengahle ngiso	Iyonke ekhoyo	Isixamali esizuzwe liSebe	Isixamali esichithwe liSebe	% yezimali ezikhoyo ezichithwe liSebe	UMthetho woLwabiwo lweNgeniso	Isixamali esichithwe ngamaSebe
	R'000	R'000	R'000	R'000	R'000	R'000	R'000	%	R'000	R'000
UMthetho woLwabiwo lweNgeniso										
HIV/AIDS	11,870	-	-	2	11,872	11,870	11,872	100.0%	11,205	11,205
Inkqubo yesizwe yesondlo ezikolweni	48,313	-	-	-	48,313	48,313	45,958	95.1%	49,321	49,337
Isibonelelo seFET	70,000	-	-	-	70,000	70,000	70,000	100.0%	-	-
Isibonelelo sePhondo seZiseko (PIG)	126,829	-	-	-	126,829	126,829	126,706	99.9%	82,565	83,141
Iyonke	257,012	-	-	2	257,014	257,012	254,536		143,091	143,683

**ISEBE LEMFUNDO LENTSHONA KOLONI
VOTI 5**

Izihlomelo kwiiNgxelo zoNyaka zeZimali zonyaka ophele ngomhla wama 31 Matshi 2007

ISihlomelo 1B

INGXELO YEZIBONELELO EZINGENAMIQATHANGO NOKUNIKEZELWE KOOMASIPALA

Igama loMasipala	UKWABELWA KWESIBONELELO				UNIKEZELO		ECHITHIWEYO			2005/06
	Isixamali	Egqithi selweyo	Uhlengahl engiso	Iyonke ekhoyo	Eyona inikezelweyo	% yezimali ezikhoyo ezinikezelweyo	Isixamali esizuzwe ngumasi-pala	Isixamali esichithwe ngumasi-pala	% yezimali ezikhoyo ezichithwe ngumasi-pala	Iyonke ekhoyo
	R'000	R'000	R'000	R'000	R'000	%	R'000	R'000	%	R'000
Ikhansile yeDolophu yaseKapal	2,140	-	-	2,140	2,140	100.0	2,140	2,140	100.0	8,270
Umasipala weSithili waseCape Winelands	440	-	-	440	440	100.0	440	440	100.0	1,700
Umasipala weSithili woMbindi Karoo	56	-	-	56	56	100.0	56	56	100.0	220
Umasipala weSithili waseEden	433	-	-	433	433	100.0	433	433	100.0	1,666
Umasipala weSithili waseOverberg	141	-	-	141	141	100.0	141	141	100.0	536
Umasipala weSithili woNxweme lwaseNtshona	120	-	-	120	120	100.0	120	120	100.0	465
Iyonke	3,330	-	-	3,330	3,330		3,330	3,330		12,857

Akuqhutywanga neerhafu zeRCS 1/7/2006

**ISEBE LEMFUNDO LENTSHONA KOLONI
VOTI 5**

IZihlomelo kwiiNgxelo zoNyaka zeZimali zonyaka ophele ngomhla wama 31 Matshi 2007

ISihlomelo 1C

INGXELO YEMALI ENIKEZELWE KWII-ARHENTE ZESEBE NEE-AKHAWUNTI

ISebe/ I-Arhente/I-Akhawunti	UKWABELWA KWESINIKEZELO				UNIKEZELO		2005/06
	UMthetho woLwabiwo ohlengahlen-gisiweyo	Egqithisel-weyo	Uhlena-hlengiso	Iyonke ekhoyo	Eyona inikezel-weyo	% yezimali ezikhoyo ezinikezel-weyo	UMthetho woLwabiwo
	R'000	R'000	R'000	R'000	R'000	%	R'000
SETA	3,756	-	-	3,756	3,756	100.0	3,306
Total	3,756	-	-	3,756	3,756		3,306

**ISEBE LEMFUNDO LENTSHONA KOLONI
VOTI 5**

IZihlomelo kwiiNgxelo zoNyaka zeZimali zonyaka ophele ngomhla wama 31 Matshi 2007

ISihlomelo 1D

INGXELO YONIKEZELO/INKXASO-MALI KUMAZIKO ANGENZI NGENISO

Umbutho ongenzi ngeniso	UKWABELWA KWESINIKEZELO				INKCITHO		2005/06
	UMthetho wohlengah- lengiso lwesabelo	Egqithisel- weyo	Uhlengahlen- giso	Iyonke ekhoyo	Eyona inikezel- weyo	% yezimali ezikhoyo ezinikezel- weyo	UMthetho wokugqibela woLwabiwo
	R'000	R'000	R'000	R'000	R'000	%	R'000
Unikezelo							
Izikolo zesiqhelo zoluntu	370,068	-	70,038	440,106	416,756	94.7	406,125
Izikolo ezizimeleyo	34,127	-	132	34,259	34,259	100.0	32,445
Izikolo zabafundi abaneemfuno zemfundo ezizodwa	75,623	-	(173)	75,450	76,933	102.0	69,868
likholeji zemfundo ethe xhaxhe	109,310	-	21,251	130,561	155,688	119.2	65,833
ABET: Amaziko abucala	15,771	-	1,602	17,373	17,373	100.0	17,188
ECD: Gr-R-Izikolo zoluntu	6,985	-	15,516	22,501	22,335	99.3	12,853
ECD: Gr-R-Amaziko oluntu	43,444	-	(15,324)	28,120	23,284	82.8	16,642
Zizonke	655,328	-	93,042	748,370	746,628		620,954

**ISEBE LEMFUNDO LENTSHONA KOLONI
VOTI 5**

IZihlomelo kwiiNgxelo zoNyaka zeZimali zonyaka ophele ngomhla wama 31 Matshi 2007

**ISihlomelo 1E
INGXELO YONIKEZELO NENKXASO KWIINTSAPHO**

lintsapho	UKWABELWAA KONIKEZELO				INKCITHO		2005/06
	UMthetho woLwabiwo oHlengahleng isiweyo	Egqithiselweyo	Uhlengahlen-giso	Iyonke ekhoyo	Eyona inikezelweyo	% yezimali ezikhoyo ezinikezelweyo	UMthetho wokuGqibela woLwabiwo
	R'000	R'000	R'000	R'000	R'000	%	R'000
Izibonelelo zoBuntu kuBasebenzi (ukunyuka kwekhefu)	16,007	-	-	16,007	16,007	100.0	21,097
Amabango ngakuMbuso	1,929	-	-	1,929	1,929	100.0	1,628
Ukucinywa kwamatyala abasebenzi – Inkxaso-mali yokufunda	3	-	-	3	3	100.0	5
Inkxaso-mali yokufunda (kwabangengobasebenzi)	1,868	-	-	1,868	1,868	100.0	1,743
Iintlawulo zesisal/ <i>Ex gratia</i>	5	-	-	5	5	100.0	-
Iyonke	19,812	-	-	19,812	19,812		24,473

ISEBE LEMFUNDO LENTSHONA KOLONI
VOTI 5

IZihlomelo kwiiNngxelo zoNyaka zeZimali zonyaka ophele ngomhla wama 31 Matshi 2007

ISihlomelo 1F

INGXELO YEZIPHO NNENKXASO EZUZWE KUNYAKA OPHELE NGOMHLA WAMA 31 MATSHI 2007

UHLOBO LWESIPHO OKANYE INKXASO	2006/07 R'000	2005/06 R'000
Okuzuziweyo okungeyomali Together with Africa and Asia Association - isithuthi (ibhasi)	13	-
Zizonke	13	-

**ISEBE LEMFUNDO LENTSHONA KOLONI
VOTI 5**

IZihlomelo kwiiNgxelo zoNyaka zeZimali zonyaka ophele ngomhla wama 31 Matshi 2007

ISihlomelo 1G

**INGXELO YEZIPHO NENKXASO NEZAPHULELO EZENZIWEYO, IMBUYEKEZO YEENTLAWULO
EBEZENZIWE NJENGESSENZO SOBULUNGISA KUNYAKA OPHELE NGOMHLA WAMA 31 MATSHI 2007**

UHLOBO LWESIPHO OKANYE INKXASO	2006/07 R'000	2005/06 R'000
Izaphulelo, imbuyekezo, neentlawulo ezenziwe njengesenzo sobulungisa		
linkonzo zezithuthi zezigu – Isikolo samabanga aphantsi saseBrandwacht	2	10
BP Lujabe – lindleko zomngcwabo womfundi, Y Lujabe	3	-
Zizonke	5	10

**ISEBE LEMFUNDO LENTSHONA KOLONI
VOTI 5**

IZihlomelo kwiiNgxelo zoNyaka zeZimali zonyaka ophele ngomhla wama 31 Matshi 2007

ISihlomelo 2A

INGXELO YEZIQINISEKISO ZEMALI EZIKHUTSHWE NGOMHLA WAMA 31 MATSHI 2007 - EKHAYA

Iziko elinike isiqinisekiso	Isiqinisekiso malunga	Isixa ebekuqinisekiswa ngaso kuqala	Intsalela yokuvula ngokomhla woku 01/04/2006	Iziqinisekiso ezityikityiweyo enyakeni	Intlawulo zeziqinisekiso/ezirhoxisiweyo/ezincitshisiweyo/ezikhutshiweyo enyakeni	Ukuxatyiswa ngokutsha kwemali	Intsalela yokuvula 31/03/2007	Inzala ebiziqinisekisiwe eseleyo 31/3/2007	Ilahleko ekhutshiweyo engenakubuy ekezwa okt. Amabango ahlawulweyo
		R' 000	R' 000	R' 000	R' 000	R' 000	R' 000	R' 000	R' 000
Ezezindlu									
0001 – Standard Bank of S.A. Limited		-	6,320	4,976	3,109	-	8,187	-	16
0002 Nedbank Limited (former Cape of GHB)		-	829	(34)	520	-	275	-	-
0003 Nedbank Limited		-	1,219	4,430	2,286	-	3,363	-	16
0004 First Rand Bank Limited: First NA		-	3,527	9,656	8,626	-	4,557	-	26
0010 Nedbank limited incorporating BOE		-	1,531	1,402	2,831	-	102	-	-
0017 ABSA		-	14,727	36,658	19,590	-	31,795	-	20
0041 Old Mutual Finance Limited		-	444	92	224	-	312	-	-
0052 People's Bank Limited (Former FBC)		-	1,107	332	1,156	-	283	-	-
0053 Nedbank Limited (incorp NB)		-	2,185	4,232	2,116	-	4,301	-	21
0054 First Rand Bank Limited: FNB former		-	2,757	4140	1,281	-	5,616	-	-
0055 Old Mutual Bank Div of Nedbank		-	7,827	5,564	10,002	-	3,389	-	-
0071 GBS Mutual Bank		-	49	(20)	14	-	15	-	-
0280 Albaraka Bank		-	13	20	-	-	33	-	-
0281 Nedbank Ltd (incorporated Bo)		-	30	-	-	-	30	-	-
0444 BOE Bank Ltd		-	929	(120)	683	-	126	-	-
0512 SA Homeloans (Pty) Ltd		-	-	20	-	-	20	-	-
0514 First Rand Bank: Origin Division		-	-	22	22	-	-	-	-
0516 Greenstart Homeloans (Pty) Ltd		-	105	47	78	-	74	-	-
0530 National Housing Finance Corporation		-	448	247	61	-	634	-	-
Spes Bona Bank		-	-	3	-	-	3	-	-
Santam Bank		-	-	14	-	-	14	-	-
Provincial Building Society		-	-	10	-	-	10	-	-
Old Mutual (Perm)		-	-	3,043	1,776	-	1,267	-	9
Future Bank		-	-	6	-	-	6	-	-
Fidelity		-	-	62	-	-	62	-	-
EP Bank		-	-	33	-	-	33	-	-
Community Bank		-	-	62	-	-	62	-	-
Cash Bank		-	-	19	-	-	19	-	-
BOE Boland		-	-	682	255	-	427	-	-
Other		-	-	375	-	-	375	-	-
Iyonke		-	44,047	75,973	54,630	-	65,390	-	108

ISEBE LEMFUNDO LENTSHONA KOLONI
VOTI 5

IZihlomelo kwiiNgxelo zoNyaka zeZimali zonyaka ophele ngomhla wama 31 Matshi 2007

Isihlomelo 2B

INGXELO YAMATYALA ASISININZI NGOKOMHLA WAMA 31 MATSHI 2007

UHlobo lweTyala	Intsalela yokuvula 01/04/2006	Amatyala enziweyo enyakeni	Amatyala ahlawulweyo/ac inyiweyo/ ancitshisiweyo enyakeni	Amatyala anokuhlawuleka	Intsalela yokuvala 31/03/2007
	R'000	R'000	R'000	R'000	R'000
Amabango ngakwisebe Awahlukeneyo	13,795	14,585	1,971	-	26,409
Ewonke	13,795	14,585	1,971	-	26,409

**ISEBE LEMFUNDO LENTSHONA KOLONI
VOTI 5**

Izihlomelo kwiiNgxelo zoNyaka zeZimali zonyaka ophele ngomhla wama 31 Matshi 2007

ISihlomelo 3

INZUZO PHAKATHI KWAMASEBE KARHULUMENTE

Urhwebo lukaRhulumente	Inysalela eqinisekisiweyo eseleyo		Intsalela engaqinisekiswa eseleyo		Iyonke	
	31/03/2007	31/03/2006	31/03/2007	31/03/2006	31/03/2007	31/03/2006
	R'000	R'000	R'000	R'000	R'000	R'000
ISebe						
ISebe lezeMfundo leSizwe	-	-	180	325	180	325
ISebe lezeMfundo eGauteng	-	-	50	37	50	37
Amanyane (Amabango emivuzo 0061)	-	-	3,316	-	3,316	-
EzeMfundo eMntla Koloni (0067)	-	-	200	433	200	433
ISebe lezeMfundo eMpuma Koloni (EED)	-	-	82	922	82	922
ISebe lezeMisebenzi leSizwe (DLB)	-	-	214	-	214	-
ELRC (Ikhansile eYonyuliweyo yeZisombululo zeMisebenzi)	-	-	408	553	408	553
IiNkonzo zaMapolisa zoMzantsi Afrika	-	-	63	17	63	17
UMkhosi woMzantsi Afrika	-	-	19	7	19	7
SADTU (South African Democratic Teachers Union)	-	-	1,830	1,214	1,830	1,214
CTPA (Cape Teachers Professional Ass.)	-	-	220	25	220	25
Public Allied Workers Union S.A.	-	-	14	-	14	-
IKhansile yeDolophu yaseKapa	-	-	18	-	18	-
IiNkonzo zoLuntu eNtshona Koloni (WSS)	-	-	46	24	46	24
OoRhulumente beMimandla nezeZindlu eNtshona Koloni (WHA)	-	-	54	7	54	7
ISebe loKhuseleko loLuntu eNtshona Koloni (WSL)	-	-	52	9	52	9
ISebe lezoLimo eNtshona Koloni (WLA)	-	-	46	32	46	32
ISebe lezeMpilo (WHW)	-	-	9	45	9	45
IMicimbi yeNkcubeko (WAC)	-	-	13	-	13	-
ISebe leNkulumbuso (WAM)	-	-	213	20	213	20
ISebe lezeMfundo eNtshona Koloni (WED)	-	-	431	-	431	-
Uvimba wePhondo eNtshona Koloni (WFE)	-	-	37	29	37	29
Iintsalela zamatyala ezingalathwanga	-	-	(878)	-	(878)	-
ISebe lezeMfundo Kwazulu/Natal	-	-	-	119	-	119
ISebe lezeMfundo Free State	-	-	-	198	-	198
ISebe lezeMfundo kuMntla Ntshona	-	-	-	3	-	3
Ulawulo lwePhondo Natal	-	-	-	394	-	394
Iphondo iPWV	-	-	-	165	-	165
Iphondo leMpuma Transvaal	-	-	-	6	-	6
Iphondo le Orange Free State	-	-	-	1	-	1
ISebe lezoThutho neMisebenzi yoLuntu eNtshona koloni	-	-	-	2	-	2
NAPTOSA	-	-	-	132	-	132
ISebe leNSizwe leeNkonzo zoLuntu	-	-	-	45	-	45
Ulawulo lwePhondo leNtshonar Koloni	-	-	-	948	-	948
Uvimba weSizwe, Imihlalaphantsi	-	-	-	3,288	-	3,288
ISebe leMicimbi yoKusingqongileyo leNtshona Koloni	-	-	-	2	-	2
Hosmed	-	-	-	50	-	50
Amanyane	-	-	-	2,317	-	2,317
Iyonke	-	-	6,637	11,369	6,637	11,369

ISEBE LEMFUNDO LENTSHONA KOLONI
VOTI 5

IZihlomelo kwiiNgxelo zoNyaka zeZimali zonyaka ophele ngomhla wama 31 Matshi 2007

ISihlomelo 4

IINTLAWULO PHAKATHI KWAMASEBE – EZANGOKU

URHWEBO LUKARHULUMENTE	Intsalela eqinisekisiweyo eseleyo		Intsalela engaqinisekiswa eseleyo		IYONKE	
	31/03/2007	31/03/2006	31/03/2007	31/03/2006	31/03/2007	31/03/2006
	R'000	R'000	R'000	R'000	R'000	R'000

AMASEBE

Ngoku

ISebe lezoThutho, iiNdllela neMisebenzi yoLuntu eNtshona Koloni	-	-	2,555	156	2,555	156
ISebe leSizwe lezoBulungisa noPhuhliso loMgaqo-siseko	1	1	-	-	1	1
ISebe lezeMfundo eFree State	26	-	18	-	44	-
ISebe lezeMpilo eNtshona Koloni	58	-	-	-	58	-
ISebe loKhuseleko loLuntu leNtshona Koloni	30	-	-	-	30	-

Iyonke

115	1	2,573	156	2,688	157
------------	----------	--------------	------------	--------------	------------