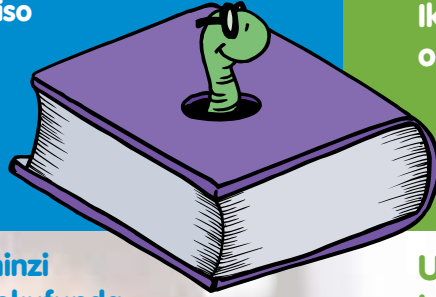


## Iintsapho ezithanda ukufunda

**Ulwazi lokufunda nokubhala** lingcebiso kubazali – lindlela zokuphucula izakhono zokufunda, ukubhala nezolwimi zomntwana wakho ekhaya.



## Okufanelwe ukwaziwa ngumntwana okwiBakala 3

Ikharityhulam kazwelonke ichaza okufanelwe ukwaziwa ngumntwana wakho nafanele ukukwenza kwibakala ngalinye kwisifundo ngasinye, kubandakanywa ukufunda, ukubhala nezakhono zolwimi.

**Abazali bangenza okuninzi ukuphucula izakhono zokufunda, ukubhala nezolwimi zabantwana babo ekhaya. Oku kulandelayo yeminye yemizekelo:**

- Mfundele umntwana wakho yonke imihla.
- Mbalisele amabali ngosapho.
- Thetha, thetha, thetha –umntwana wakho ufunda amagama aseteyenziswayo xa kuthethwa ngokumamela kuwe.
- Funda iibhokisi zesiriyeli (cereal boxes), iitoti zokutya nezinto ekugalelwe kuzo izinto zokucoca.
- Mfundise umntwana wakho ukuba zifundwa njani na iilebhile zezilumkiso.
- Yenza ibe ngumdlalo "Rayi rayi ndinanto ndiyibonayo eqala ngo..." (biza unobumba).
- Yiya kutshekisha amehlo abantwana bakho minyaka le ukuba bayabona kakuhle yaye bayeva kakuhle.
- Baphe abantwana bakho izipho eziziincwadi okanye iimagazini.
- Abagcini bomntwana wakho mabachithe ixesha bethetha naye kwaye bamfundele umntwana wakho.
- Mncome umntwana wakho ngokwenza umsebenzi omhle.
- Fumana amakhadi aselayibrari osapho lonke nize niye qho elayibrari.

**Umzekelo, abantwana kwiBakala 3 kufuneka babenako ukwenza oku kulandelayo:**

- **Ukumamela** ngenyameko baze baphendule kwimiyalelo.
- **Ukuthetha** ngamava abo buqu nangeendaba eziqhelekileyo zakutshanje; ukubalisa amabali anesiqalo, isiqu nesiphelo, ukuthetha nabantu ngembeko nokwazi ukumamela ngenyameko.
- Ukufunda ibali okanye umbongo nokuba babonise ukuba bayakuqonda oko bakufundileyo ngokuphendula imibuzo ngokuchanekileyo.
- **Ukubhala** amabali anomhlathi omnye nemibini, iileta okanye iiresiphi; mabakwazi ukubhala ngokucacileyo.
- Ukucwangcisa imisebenzi ngokucinga omakwenziwe, kuba kutheni, njani yaye ngubani.
- Ukupela ngokuchanekileyo, sebenzisa imigaqo yopelo wazi ukuba zisetyenziswa njani na iintlobo zemibuzo, iingxelo (*statements*) nemiyalelo.



**ISEBE LEMFUNDO**  
**leNtshona Koloni**

URhulumente Wephondo leNtshona Koloni



**Omnye ufundisa omnye**  
**Sisonke sakha iKhaya elithanda uKufunda**  
**loMntu Wonke**