



**Western Cape
Government**

Education

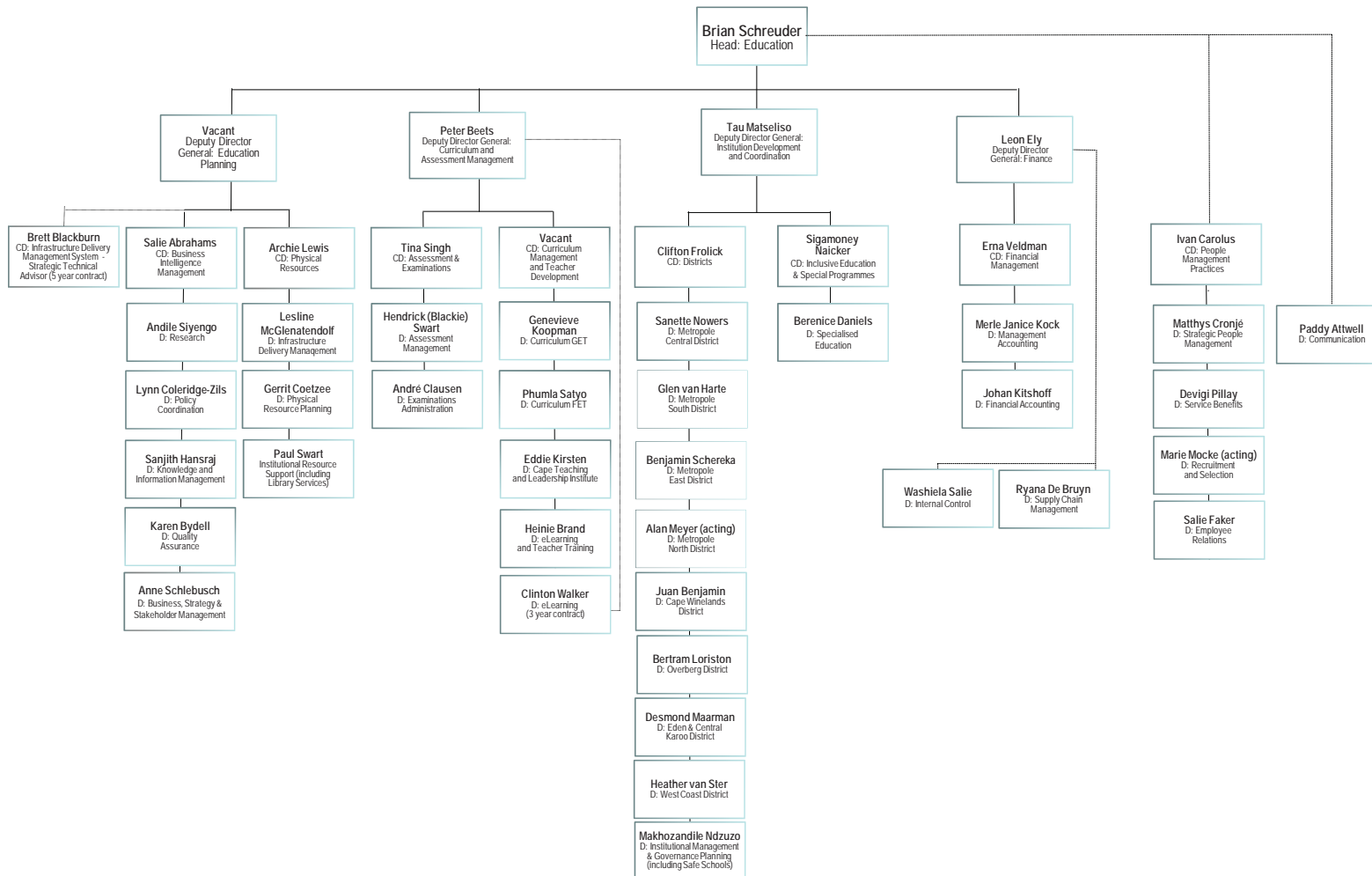
INcwadi yeMigaqo yokuKhuthaza uKufikelela
kwiiNkcukacha, ka-2017, equlunqwe ngokwesiqendu
soMthetho oKhuthaza uKufikelela kwiiNkcukacha,
iPromotion to Access to Information Act, ka-2000
elungiselelwe iSebe leMfundo leNtshona Koloni

1	INTSHAYELELO	Error! Bookmark not defined.
2	Ubume beSebe leMfundo leNtshona Koloni ukususela ngowe-01 Matshi 2017 – isiqendu 14(1)(a)	2
3	Imisebenzi yeSebe	Error! Bookmark not defined.
3.1	INkqubo 1: Ezolawulo	3
3.2	INkqubo 2: IMfundo yeZikolo zikaRhulumente eziQhelekileyo	4
3.3	INkqubo 3: liNkxaso-mali zeZikolo eziZimeleyo	4
3.3.1	Ukuxhasa izikolo ezizimeleyo ngokungqinelana noMthetho weZikolo zaseMzantsi Afrika	4
3.4	INkqubo 4: IMfundo yeZikolo zikaRhulumente zeMfundo eneeMfuno eziZodwa	5
3.4.1	Ukubonelela ngemfundo enyanzelekileyo kawonkewonke kwizikolo zemfundo eneemfuno ezizodwa ngokungqinelana noMthetho weZikolo zaseMzantsi Afrika noMgaqo-nkqubo osaXoxwayo 6 omalunga neMfundo eBandakanya Bonke aBafundi. Kuqukwa i- <i>e-learning</i> nemfundo ebandakanya bonke abafundi	5
3.5	INkqubo 5: UPhuhliso lweMfundo yaBaselula	5
3.5.1	Ukubonelela ngoPhuhliso lweMfundo yaBaselula (<i>Early Childhood Development (ECD)</i>) kwiBakala R naphambi kwebakala R ngokungqinelana noMgaqo-nkqubo osaXoxwayo 5. (Kukwaqukwa i- <i>E-learning</i>).	5
3.6	INkqubo 6: ULwakhiwo lweZiseko zoPhuhliso	6
3.6.1	Ukubonelela nokulondoloza iifasilithi zeziseko zophuhliso zezikolo nezingezozazikolo	6
3.7	INkqubo 7: liMviwo neeNkonzo eziNxulumene nezeMfundo	6
3.7.1	Ukubonelela amaziko emfundo ngokupheleleyo ngeemviwo neenkonzo ezinxulumee nezemfundo.	6
4	linkcukacha zonxibelelwano zeGosa leNgcaciso iSiqendu 14(1)(b).....	8
5	Isikhokelo seKomishoni yamaLungelo oLuntu yaseMzantsi Afrika emalunga nokusebenzisa lo Mthetho, iSiqendu 14(1) (C)	10
6	Ingcaciso emalunga noMthetho oKhuthaza uKufikelela kwiiNkcukacha, 2002.....	11
6.1	Inkcazo ngezihloko namacandelo eeRekhodi zeSebe – iSiqendu 14(1)(d)	11
6.2	Iirekhodi zeSebe ezifumaneka ngokuzenzekelayo ngaphandle kwemfuneko yokucela ukungena – iSiqendu 14(1)(e).....	11
6.3	Inkonzo efumanekayo kuwonkewonke – isiqendu 14(1)(f)	18
6.4	Ukulungiselela intatho-nxaxheba ngokuthetha-thethana kunye/okanye ukumelwa ekuqulunqweni komgaqo-nkqubo wesebe kunye/okanye ukwenziwa kwemisebenzi - iSiqendu 14(1)(g).....	18
6.5	Amanyathelo omthetho afumanekayo okulungisa imeko okanye ukusilela ukuthobela umthetho – isiqendu 14(1)(h)	19
6.5.2	Imibuzo, izikhalazo okanye iintetho ngokuphathelele ekwenziweni kwenkonzo liSebe leMfundo leNtshona Koloni zinokwenziwa ngolu hlobo lulandelayo:.....	19
7	Ukufikeleleka nokufumaneka kwale ncwadana yemigaqo – Isiqendu 14(3)	19
8	ISIHLOMELO A: ISIKHOKELO NGOKUMALUNGA NOKUFIKELELA KWIREKHODI EZINGAFUMANEKI NGOKUZENZEKELAYO.....	20
9	ISIHLOMELO B: IMIGQALISELO YOKWENZIWA KWENKONZO.....	24
10	ISIHLOMELO C: IFOM A.....	25
11	ISIHLOMELO IFOM B	29
12	ISIHLOMELO IMIRHUMO.....	Error! Bookmark not defined.

1 INTSHAYELELO

- 1.1 Inkqubo esebenzayo yomgaqo-siseko eMzantsi Afrika yenza amalungiselelo elungelo lokufikelela kuyo nayiphi ingcaciso egcinwe nguMbuso (phantsi kwemida ekunikwe izizathu ngayo) nakwingcaciso egcinwe liqumrhu labucala efunekayo ukusetyenziswa okanye ukukhuselwa kwalo naliphi ilungelo.
- 1.2 INkundla yoMgaqo-siseko yalicacisa ilungelo lokufikelela kwingcaciso njengelingaphelele nje ekusebenziseni okanye ekukhuselweni kwelungelo, okanye ekufikeleleni kwingcaciso, koko lukwaqinisekisa ukuba kukho ulawulo oluvulelekileyo nolunoxanduva lokuphendula kuwo onke amanqanaba karhulumente.
- 1.3 ISiqendu 32(1)(a) nese-(2) soMgaqo-siseko weRiphabliki yoMzantsi Afrika, yowe-1996 (uMgaqo-siseko) sifundeka ngolu hlobo lulandelayo:
- “(1) Wonke umntu unelungelo lokufikelela –
(a) nayo nayiphi na ingcaciso egcinwe nguMbuso; nayo
(b) nayo nayiphi na ingcaciso egcinwe ngomnye umntu nefunekayo ekusebenziseni okanye ekukhuseleni nawaphi na amalungelo.
(2) Imithetho kazwelonke mayiwiswe ukuze isebenze kweli lungelo, yaye isenganika imimiselo esengqiqweni yokuthula umthwalo kwezolawulo nakwezemali embusweni.”*
- 1.4 Oku sele kuchaziwe ngaphambili kummiselo woMthetho woKukhuthaza uKufikelela kwiiNkcukacha, ka-2000 (PAIA). Injongo yePAIA kukukhuthaza umoya wokusebenza ngendlela esekuhleni noxanduva lokuphendula ngokwenzayo kumaqumrhu karhulumente nawabucala kwanokuxhobisa nokufundisa abantu baseMzantsi Afrika ukuba bawaqonde amalungelo abo.
- 1.5 Ngokwesiqendu 14 sePAIA iqumrhu likarhulumente kufuneka libe nayo incwadi yemigaqo ecacisa gca phakathi kwezinye izinto imisebenzi, nezalathiso zeerekhodi ezigcinwe liqumrhu likarhulumente. Le ncwadi yemigaqo iwisa imigaqo yesiqendu 14 yePAIA yaye kwakhona inika uncedo malunga nenkqubo emayilandelwe ukucela ukufikelela kwirekhodi egcinwe liSebe leMfundo leNtshona Koloni.

2 Ubume beSebe leMfundo leNtshona Koloni ukususela ngowo-01 Matshi 2017 – isiqendu 14(1)(a)



3 Imisebenzi yeSebe

Ukuqinisekisa imfundo esemgangathweni nakumaziko emfundo kwiphondo ngokuthi:

- Kwenziwe iinkonzo zonxibelelwano zesebe. Ngokulawula inkqubo yokwenziwa kwemisebenzi yesebe kunye nabathathi-nxaxheba;
- Kunikwe iinkonzo zocwangciso lwezemfundo; ngokulawula inkqubo zophuhliso lwekharithulam, ezovavanyo nezeemviwo;
- Kulawulwe uphuhliso lwamaziko emfundo kwaneziseko zolawulo kwakunye nokuququzela ukwenziwa kweenkqubo kunye nemisebenzi. Ukulawula ukusebenza ngempumelelo, ngobuchule nangoqoqosho ekunikeni inkxaso yequmrhu;
- Ekunikeni inkxaso yokuphatha nakwezolawulo kwiNtloko yeSebe; Amathuba ezoqeqesho kootitshala nakwabangezotitshala
- Inkqubo zokukhupha ukutya okujoliswe kwabathile namanye amanyathelo okuthomalalisa ubuhlwempu nokuqinisekisa ukhuseleko Ekunikeni inkxaso kootitshala ngokubonelela ngemiqathango yesiseko yenkonzo, izibonelelo zenkuthazo nenkqubo yokuqinisekisa impilo qete yabaqeshwa

3.1 INkqubo 1: Ezolawulo

3.1.1 Ngokunika ulawulo ngokubanzi lwenkqubo yemfundo ngokungqinelana nomthetho i-*National Education Policy Act*, umthetho i-*Public Finance Management Act* kunye neminye imigaqo-nkqubo.

3.1.2 Le misebenzi ilandelayo yenziwa ngokwale nkqubo:

3.1.2.1 Inkqutyana 1.1: Kwi-Ofisi yoMphathiswa wePhondo: Ukubonelela ngokusebenza kwe-ofisi yeLungu lePalamente yePhondo kwezemfundo ngokunqinelana nencwadana esetyenziswayo yomphathiswa.

3.1.2.2 Inkqutyana 1.2: IiNkonzo zeQumrhu: Ukubonelela ngeenkonzo zolawulo ezingajolise kwezemfundo ezenzelwe le nkqubo yemfundo

3.1.2.3 Inkqutyana 1.3: EzoLawulo lweMfundo: Ukubonelela ngeenkonzo zolawulo lwemfundo ezenzelwe le nkqubo yemfundo

3.1.2.4 Inkqutyana 1.4: EzoPhuhliso loLawulo lwaBasebenzi: Ukubonelela ngezophuhliso lolawulo lwabasebenzi abasezi-ofisini

3.1.2.5 Inkqutyana 1.5: INkqubo yoLawulo lweNgcaciso yeMfundo (*Education Management Information System*) (*EMIS*): Ukubonelela ngeNkqubo yoLawulo

IweNgcaciso yeMfundo ngokungqinelana nomgaqo-nkqubo kazwelonke i-*National Education Information Policy*.

INkqubo 2: IMfundo yeZikolo zikaRhulumente eziQhelekileyo

3.2.1 Ukubonelela ngemfundo yezikolo zikarhulumente eqhelekileyo ukususela kumaBakala 1 ukuya kwele-12, ngokungqinelana noMthetho weZikolo waseMzantsi Afrika noMgaqo-nkqubo oxaXoxwayo 6 omalunga nobandakanyeko lwabo bonke abafundi (Kukwaqukwa ne-*E-learning*.)

3.2.2 Le misebenzi ilandelayo yenziwa ngokwale nkqubo:

3.2.2.1 Inkqutyana 2.1: INqanaba leZikolo eziziiPrayimari zikaRhulumente: Ukubonelela izikolo eziziiprayimari zikarhulumente ezithile (kuqukwa nemfundo ebandakanya bonke abafundi) ngezibonelelo ezifunekayo kwinqanaba leBakala 1 ukuya kwele-7

3.2.2.2 INkqubo eNcinane 2.2: KwiNqanaba leZikolo eziiSekondari zikaRhulumente: Ukubonelela izikolo eziziiSekondari zikarhulumente ezithile (kuqukwa nemfundo ebandakanya bonke abafundi) ngezibonelelo ezifunekayo kwinqanaba lamaBakala 8 ukuya kwele-12

3.2.2.3 Inkqutyana 2.3: ULawulo lwaBasebenzi: Ukubonelela ngeenkono zesebe kootitshala nakwabangezotitshala kwizikolo zikarhulumente.

3.2.2.4 Inkqutyana 2.4: IiGranti eziKhutshwa phantsi kweMiqathango: Ukubonelela ngeeprojekthi phantsi kwenkqubo 2 ecaciswe liSebe leMfundo esiSiseko nexhaswa ngeegranti ezikhutshwa phantsi kwemiqathango

3.2 INkqubo 3: IiNkxaso-mali kwiZikolo eziZimeleyo

3.3.1 Ukunika inkxaso kwizikolo ezizimeleyo ngokungqinelana noMthetho weZikolo waseMzantsi Afrika

3.3.2 Kwenziwa le misebenzi ilandelayo ngokwale nkqubo:

3.3.2.1 Inkqutyana 3.1: KwiNqanaba lePrayimari: Ukunika inkxaso kwizikolo ezizimeleyo kumanqanaba amaBakala 1 ukuya kwele-7

3.3.2.2 Inkqutyana 3.2: INqanaba leSekondari: Ukunika inkxaso kwizikolo ezizimeleyo kumanqanaba amaBakala 8 ukuya kwele-12

3.3 INkqubo 4: IMfundo yeZikolo zikaRhulumente zeMfundo eneeMfuno eziZodwa

3.4.1 Ukubonelela ngemfundo enyanzelekileyo karhulumente kwizikolo zemfundo eneemfuno ezizodwa ngokungqinelana noMthetho weZikolo waseMzantsi Afrika noMgaqo-nkqubo osaXoxwayo 6 omalunga nemfundo ebandakanya bonke abafundi. Kuqukwa ne-*e-learning* kwanemfundo ebandakanya bonke abafundi

3.4.2 Le misebenzi ilandelayo yenziwa ngokwale nkqubo:

3.4.2.1 Inkqutyana 4.1: Izikolo: Ukubonelela ngemfundo karhulumente yemfundo eneemfuno ezizodwa ngezibonelelo. (Kuqukwa i-*e-learning* nemfundo ebandakanya bonke abafundi.)

3.4.2.2 Inkqutyana 4.2: UPuhliso loLawulo lwaBasebenzi: Ukubonelela ngeenkono zemfundo nezooqeqeshelo-misebenzi kunye nolunye upuhliso lootitshala nabangezotitshala kwizikolo zikarhulumente zemfundo eneemfuno ezizodwa (kuqukwa imfundo ebandakanya bonke abafundi).

3.4.2.3 Inkqutyana 4.3: IiGranti eziKhutshwa phantsi kweMiqathango: Ukubonelela ngeeprojekthi phantsi kwenkqubo 4 ecaciswe liSebe leMfundo esiSiseko nexhaswa ngeegranti ezikhutshwa phantsi kwemiqathango (kuqukwa imfundo ebandakanya bonke abafundi)

Inkqutyana: "Iinkonzo zeMidlalo yeSikolo, iNkcubeko naMajelo eeNdaba" akubonelelwa ngayo njengoko umsebenzi uphantsi kweSebe leMicimbi yeNkcubeko neMidlalo.

3.4 INkqubo 5: UPuhliso lwaBantwana aBasaqalayo

3.5.1 Ukubonelela ngoPhuhliso lweMfundo yaBaselula (*ECD*) kwiBakala R nakwibakala eliphambi kwebakala R ngokungqinelana noMgaqo-nkqubo osaXoxwayo 5. (Ikwaqukiwe i-*E-learning*).

3.5.2 Le misebenzi ilandelayo yenziwa ngokwale nkqubo:

3.5.2.1 Inkqutyana 5.1: IBakala R kwiZikolo zikaRhulumente: Ukubonelela izikolo zikarhulumente eziqhelekileyo ngezibonelelo ezifunekayo kwiBakala R

3.5.2.2 Inkqutyana 5.2: IBakala R kuMaziko oPhuhliso lweMfundo yaBaselula: Ukunika inkxaso kwiBakala R kumaziko ophuhliso lwemfundo yabaselula

3.5.2.3 Inkqutyana 5.3: Uqeqesho oluPhambi kweBakala R: Ukubonelela ngoqeqesho nentlawulo yezitayiphendi zeeprakhishina/ootitshala beBakala eliphambi kweBakala R

- 3.5.2.4 Inkqutyana 5.4: EzoLawulo loPhuhliso lwaBasebenzi: Ukubonelela ngeenkonzozesebe zophuhliso lweepraktishina/lootitshala nabangezotitshala kwibakala R kwizikolo zikarhulumente nakumaziko e-*ECD*
- 3.5.2.5 INkqubo 5.5: IiGranti eziKhutshwa phantsi kweMiqathango: Ukubonelela ngeeprojekthi phantsi kweNkqubo 5 ecaciswe liSebe leMfundo esiSiseko nexhaswa ngeegranti ezikhutshwa phantsi kwemiqathango

INkqubo 6: Ukuphuculwa kweZiseko zoPhuhliso

- 3.6.1 Ukubonelela nokulondoloza iifasilithi zeziseko zophuhliso zezikolo nezingezozazikolo
- 3.6.2 Le misebenzi ilandelayo yenziwa ngokwale nkqubo:
 - 3.6.2.1 Inkqutyana 6.1: Ezolawulo: Ukubonelela nokulondoloza iifasilithi zophuhliso lweziseko zezolawulo
 - 3.6.2.2 Inkqutyana 6.2: Izikolo zeMfundo kaRhulumente eQhelekileyo: Ukubonelela nokulondoloza iifasilithi zeziseko zophuhliso zezikolo zikarhulumente eziqhelekileyo
 - 3.6.2.3 Inkqutyana 6.3: Izikolo zeMfundo eneeMfuno eziZodwa: Ukubonelela nokulondoloza iifasilithi zeziseko zophuhliso zezikolo zemfundo eneemfuno ezizodwa
 - 3.6.2.4 Inkqutyana 6.4: UPhuhliso lweMfundo yaBaselula: Ukubonelela nokulondoloza iifasilithi zeziseko zophuhliso ezenzelwe uphuhliso lwemfundo yabasaqalayo

3.5 INkqubo 7: IiMviwo neeNkonzo eziNxulumene nezeMfundo

- 3.7.1 Ukubonelela amaziko emfundo ngokubanzi ngeemviwo neenkonzozezinxulumene nezemfundo.
- 3.7.2 Le misebenzi ilandelayo iyenziwa ngokwale nkqubo:

- 3.7.2.1 Inkqutyana 7.1: Iintlawulo ze-*SETA*: Ukubonelela umqeshwa nge-HRD ngokungqinelana neMithetho yoPhuhliso lweZakhono
- 3.7.2.2 Inkqutyana 7.2: IiNkonzo zoQeqeshelo-msebenzi: Ukubonelela ootitshala ootitshala nabafundi ezikolweni ngeenkonzo zenkxaso ezilawulwa lisebe
- 3.7.2.3 Inkqutyana 7.3: IiMviwo zaNgaphandle: Ukubonelela ngeenkonzo zeemviwo ezilawulwa lisebe
- 3.7.2.4 Inkqutyana 7.4: IiProjekthi eziZodwa: Ukubonelela ngeenkonzo ezizodwa ezilawulwa lisebe zeeprojekthi zongenelelo ngoncedo kwinkqubo yezemfundo ngokubanzi.
- 3.7.2.5 Inkqutyana 7.5: IiGranti eziKhutshwa phantsi kweMiqathango: Ukubonelela ngeeprojekthi ezicaciswe kwiSebe leMfundo esiSiseko ezisebenza kwiinkqubo ezininzi nezixhaswa ngeegranti ezikhutshwa phantsi kwemiqathango

4 linkcukacha zoqhagamshelwano zeGosa leNgcaciso, iSiqendu 14(1)(b)

4.1 Igosa lengcaciso

Adv. B Gerber
1st Floor/15 Wale Street
Cape Town
8000
Ifoni: 021 4836032
Ifeksi: 021 4833300/4715
I-imeyili: Brent.Gerber@westerncape.gov.za

4.2 AmaGosa eNgcaciso aSekelayo

Mnu Brian Schreuder
INTloko yeSebe
ISebe leMfundo leNtshona Koloni
Grand Central Building/
Private Bag X9114
Cape Town
8000
Ifoni: 021 467 2536
Ifeksi: 021 461 3694
I-imeyili:
Eduhead.Eduhead@westerncape.gov.za

Mnu Paddy Attwell
UMlawuli woNxibelelwano
ISebe leMfundo leNtshona Koloni
Grand Central Building/Private Bag X9114
Cape Town
8000
Ifoni: 021 467 2531
Ifeksi: 021 461 3694
I-imeyili:
Paddy.Attwell@westerncape.gov.za

Nksz Lynn Coleridge-Zils
UMlawuli woQuquzelelo lweMigaqo-
nkqubo
ISebe leMfundo leNtshona Koloni
Grand Central Building/
Private Bag X9114
Cape Town
8000
Ifoni: 021 467 2055
Ifeksi: 021 467 9324
I-imeyili: Lynn.Coleridge-Zils@westerncape.gov.za

Mnu Santjith Hansraj
UMlawuli woLawulo loLwazi neNgcaciso
ISebe leMfundo leNtshona Koloni
Golden Acre Building/Private Bag X9114
Cape Town
8000
Ifoni: 021 467 2086
Ifeksi: 021 425 7445
I-imeyili:
Sanjith.Hansraj@westerncape.gov.za

Mnu Alan Meyer (obambeleyo)
UMlawuli weOfisi yeSithili i-*Metro North*
Timmerman Street/Private Bag X45
Parow
7500
Ifoni: 021 938 3133
Ifeksi: 021 938 3180
I-imeyili: alan.meyer@westerncape.gov.za

Mnu Glen van Harte
UMlawuli weOfisi yeSithili i-*Metro South*
A. Z. Berman Drive/Private Bag X2
Lentegeur
Mitchells Plain
7785
Ifoni: 021 370 2006
Ifeksi: 086 536 5675
I-imeyili:
Glen.VanHarte@westerncape.gov.za

Mnu Desmond Maarman
UMlawuli weOfisi yeSithili i-*Eden and Central Karoo*
Rentzburg Court
42 Courtenay Street/Private Bag X6510
George
6530
Ifoni: 044 803 8302
Ifeksi: 044 873 2253
I-imeyili: Desmond.Maarman@westerncape.gov.za

Mnu Betram Loriston
UMlawuli weOfisi yeSithili i-*Overberg*
15 College Street/ PO Box 581
Caledon
7230
Ifoni: 028 214 7301
Ifeksi: 086 548 1907
I-imeyili:
Bertram.Loriston@westerncape.gov.za

Mnu Benjamin Schereka
IOfisi yeSithili i-*Metro East*
Old Nooiensfontein Road/
Private Bag X23
Kuils River
7500
Ifoni: 021 900 7005
Ifeksi: 086 594 8473
I-imeyili:
Benjamin.Schereka@westerncape.gov.za

Nksz Heather van Ster
UMlawuli weOfisi yeSithili i-*West Coast*
Jack Meyer Art Centre
6 Hospital Street/Private Bag X3026
Paarl
7620
Ifoni: 021 860 1201
Ifeksi: 021 860 1231
I-imeyili:
Heather.vanSter@westerncape.gov.za

Mnu Juan Benjamin
UMlawuli weSithili i-*Cape Winelands*
Durban Street/ Private Bag X3102
Worcester
6849
Ifoni: 023 348 4601
Ifeksi: 023 342 4138
I-imeyili:
Juan.Benjamin@westerncape.gov.za

Nksz Sanette Nowers
UMlawuli weOfisi yeSithili i-*Metro Central*
Gate 2
Alexandra Provincial Office Precinct
Haven Road
Garden Village
Maitland
7405
Ifoni: 021 514 6704
Ifeksi: 021 514 6953
I-imeyili:
Sanette.Nowers@westerncape.gov.za

5 Isikhokelo seKomishoni yaMalungelo oLuntu yaseMzantsi Afrika esimalunga nokusebenzisa uMthetho, isiQendu 14(1) (C)

5.1 IKomishoni yaMalungelo oLuntu ibonelela ngesikhokelo esiqulunqwe yiyo ngokwesiqendu 10 se-PAIA esazisa abantu malunga:

- Neenjongo ze-PAIA nendlela yokusebenzisa amalungelo abo ngokwale mithetho mibini;
- linkcukacha zoqhagamshelwano zegosa lonxibelelwano nezegosa lonxibelelwano elisekelayo (apho kufanelekileyo) yawo onke amaqumrhu karhulumente kunye noncedo olufumaneka kubo;
-
- Indlela yokufikelela kwiirekhodi zamaqumrhu karhulumente; kunye
- nezisombululo zomthetho ezifumanekayo xa kukho ukusilela ukwenza ngokungqinelana nePAIA.

5.2 Yonke imibuzo malunga nokufikelela kwesi sikhokelo mayithunyelwe apha:

IOfisi yeKomishoni yaMalungelo oLuntu	
Ifofoni	+27 11 877 3900
Ifofeksi	+27 11 403 0684
Idilesi ye-imeyili	PAIA@sahrc.org.za
Idilesi yeposi	PAIA Unit: Promotion of Access to Information Private Bag 2700 Houghton 2041
Idilesi yestrato	South African Human Rights Commission 33 Hoofd Street Braamfontein 2017 JOHANNESBURG
Iziko lewebhu	www.sahrc.org.za

5.3 Isihlomelo A sale ncwadi yemigaqo sibandakanya ingcaciso malunga nokufikelela iirekhodi zeSebe, inkqubo yalo yangaphakathi yokwenza isibheni, okanye ukwenza isicelo enkundleni kamantyi esichasene nezigqibo ezenziwe liGosa leNgcaciso okanye liGosa leNgcaciso eliSekelayo, ngokwemeko leyo kuyiyo.

6 UMthetho oKhuthaza uKufikelela kwiiNkcukacha, ka-2002

6.1 Iinkcazo zezihloko namacandelo eRekhodi zeSebe – iSiqendu 14(1)(d)

Isebe ligcina iirekhodi ezimalunga neenkcazo zezihloko namacandelo alandelayo:

- IMithetho neMimiselo
- IQumrhu nezoLawulo
- ULawulo lweMali
- IThekhinoloji yeNgcaciso yezoNxibelelwano
- IiNkonzo zezoKhuseleko
- EzoLawulo lweMicimbi yaBasebenzi: ABasebenzi Benkonzo kaRhulumente
- AbezoLawulo lwaBasebenzi: OoTitshala be-CS
- ULawulo lweZakhiwo
- ICandelo lokuThengwa kweeMpahla neeNkonzo
- IiNkonzo zeNkxaso yezaMalungiselelo
- Izibhengezo, ezopapasho, ezengcaciso, okupapashiweyo kunye neengxelo zamaphephandaba
- UkuHamba iiNtlanganiso nokuBamba iiNtlanganiso nezinye iiNdibano
- EzoLawulo lwaMaziko
- IiMviwo
- IMfundo noQeqesho oluQhubekayo
- EzaBasebenzi/EzoBudlelane phakathi koMqeshi noMqeshwa
- INkqubo yokubeka eSweni nokuHlola

6.2 Iirekhodi zeSebe ezifumaneka ngokuzenzekelayo ngaphandle kwamfuneko yakucela mvume yokufikelela – iSiqendu 14(1)(e)

Ezi rekhodi zilandelayo ziyafumaneka ukwenzela ukuba zihlolwe ngokwesiqendu 15(1)(a)(i) kwanokukhuphela ngokwesiqendu 15(1)(a)(ii).

Inkcazelo yamacandelo eRekhodi ezifumaneka ngokuzenzekelayo ngokwesiqendu 15(1)(a)(i) soMthetho oKhuthaza uKufikelela kwiiNkcukacha, ka-2000	Indlela yokufikelela kwiirekhodi
(a) Iingxelo zemali zonyaka zeLOGIS neengxelo (b) Amaxwebhu ethenda neekoteshini (c) Amaxwebhu e-SourceLink - izibhengezo (d) Amaxwebhu ethenda (e) Iibhulethini zeethenda (f) Irejista yeentlawulo ezenziweyo (g) Iifayili (kungabandakanywa ngcaciso iyimfihlo neyomntu)	Ezi rekhodi ziyafumaneka ukwenzela ukuhlolwa kwiCandelo loKuthengwa kweeMpahla neeNkonzo, Grand Central Towers, Lower Parliament Street, Cape Town phakathi ko-08:00 no-15:45 Ezi rekhodi ziyafumaneka ukwenzela ukuhlolwa kwiCandelo loLawulo loLwazi neNgcaciso (KwaRejistri Jikelele), Grand

(h) lisetyhula neengcaciso ezimfutshane	Central Towers, Lower Parliament Street, Cape Town phakathi ko-08:00 no-15:45
Inkcazelo yamacandelo eerekhodi ezifumaneka ngokuzenzekelayo ngokwesiqendu 15(1)(a)(i) soMthetho oKhuthaza uKufikelela kwiiNkcukacha, ka-2000	Indlela yokufikelela kwiirekhodi
(i) Isicwangciso sobulungisa kwezengqesho (j) lirekhodi ezingoqeqesho	Ezi rekhodi ziyafumaneka ukwenzela ukuhlolwa kwiCandelo loLawulo lwaBasebenzi ngoBuchule, Grand Central Towers, Lower Parliament Street, Cape Town phakathi kuka-08:00 no-15:45
(k) lirekhodi zemali nenkcitho	Ezi rekhodi ziyafumaneka ukwenzela ukuhlolwa kwiCandelo loLawulo lweMicimbi yeMali, Grand Central Towers, Lower Parliament Street, Cape Town phakathi ko-08:00 no-15:45
Inkcazelo yamacandelo eerekhodi ezifumaneka ngokuzenzekelayo ukwenzela ukukhuphela okanye ukuthenga ngokwesiqendu 15(1)(a)(ii)	Indlela yokufikelela kwiirekhodi
(a) lingxelo zohlolo (zinako ukucelwa liziko esele lihloliwe)	likopi zezi rekhodi zinako ukufunyanwa ngokuhlululwa komrhumo omiselweyo, kwiCandelo leMicimbi yoLwabiwo noSetyenziso-mali, Grand Central Towers, Lower Parliament Street, Private Bag X9114, Cape Town
(b) lishedyuli zezixa-mali ezitsalwe emivuzweni yabantu ngabanye yaze yahlawulwa kumaqumrhu angaphandle (Kuphela ngumntu namaqumrhu achaphazelekayo anako ukwenza isicelo sazo)	likopi zezi rekhodi zinako ukufunyanwa ngokuhlululwa komrhumo ochaziweyo, kwiCandelo loLawulo lweeMviwo, Grand Central Towers, Lower Parliament Street, Private Bag X9114, Cape Town
(c) liNkcazelo zoMgaqo-nkqubo weKharithulam	likopi zezi rekhodi zinako ukufunyanwa ngokuhlululwa komrhumo omiselweyo, Kusakuba kugqityiwe ukuhlululwa kule mirhumo yezi ntlawulo zimiselweyo kwiCandelo leKharithulam ye <i>GET</i> ne <i>FET</i> , Grand Central Towers, Lower Parliament Street, Private Bag X9114, Cape Town
(d) limanyuwali zemiba yezikolo	likopi zezi rekhodi zinako ukufunyanwa ngokuhlululwa komrhumo omiselweyo, Central Towers, Lower Parliament Street, Private Bag X9114, Cape Town
(e) linkcukacha ngokubhoda neebhasari zezothutho	likopi zezi rekhodi zinako ukufunyanwa ngokuhlululwa komrhumo omiselweyo, kwiCandelo loLawulo lwaBasebenzi ngoBuchule: Grand Central Towers, Lower Parliament Street, Private Bag X9114, Cape Town
(f) Isicwangciso sezakhono zomsebenzi	
(g) Isicwangciso sobulungisa	

Inkcazelo yamacandelo eerekhodi ezifumaneka ngokuzenzekelayo ukwenzela ukukhuphela okanye ukuthenga ngokweSiqendu 15(1)(a)(ii)	Indlela yokufikelela kwiirekhodi
<p>(h) lincwadi zokufunda zeekhosi</p> <p>(i) lingxelo zonyaka (<i>WCED</i>)</p> <p>(j) Umgaqo-nkqubo ongempatho- mbi kubantwana nomgaqo ongokuziphatha</p> <p>(k) Isishwankathelo sempatho- mbi kubantwana</p> <p>(l) Amaxwebhu omgaqo-nkqubo (<i>WCED</i>)</p> <p>(m) Izintlu zezithuba zomsebenzi</p> <p>(n) Inani labaqeshiweyo kwiziko/li-oganogram zamaziko emfundo nee-ofisi ze <i>WCED</i></p> <p>(o) Ikhathalogu ye-<i>Edumedia</i></p> <p>(p) Ikhathalogu ze-<i>Edulis</i></p> <p>(q) Imathiriyeli yevidiyo yemfundo</p> <p>(r) Ingcaciso yokuhamba komntwana isikolo esisekhaya</p>	<p>likopi zezi rekhodi zinako ukufunyanwa ngokuhlawulwa komrhumo omiselweyo kwiCandelo i-<i>Cape Teaching and Leadership Institute, (CTL)</i> Private Bag X14, Kuilsriver 7580</p> <p>likopi zezi rekhodi zinako ukufunyanwa ngokuhlawulwa komrhumo omiselweyo kwiCandelo loNxibelelwano, Grand Central Towers, Lower Parliament Street, Private Bag X9114, Cape Town</p> <p>likopi zezi rekhodi zinako ukufunyanwa ngokuhlawulwa komrhumo omiselweyo kwiCandelo loQuquzelelo lweMigaqo-nkqubo, Grand Central Towers, Lower Parliament Street, Private Bag X9114, Cape Town</p> <p>likopi zezi rekhodi zinako ukufunyanwa ngokuhlawulwa komrhumo omiselweyo kwiCandelo lokuGaya nokuKhetha aBasebenzi, Grand Central Towers, Lower Parliament Street, Private Bag X9114, Cape Town</p> <p>likopi zezi rekhodi zinako ukufunyanwa ngokuhlawulwa komrhumo omiselweyo kwiCandelo loNxibelelwano: Communication, Edumedia, 3 Station Road, Mowbray</p> <p>likopi zezi rekhodi zinako ukufunyanwa ngokuhlawulwa komrhumo omiselweyo kwiCandelo lokuXhasa amaZiko ngeZibonelelo (kubandakanywa neNkonzo yeeLayibrari), Grand Central Towers, Lower Parliament Street, Private Bag X9114, Cape Town</p> <p>likopi zezi rekhodi zinako ukufunyanwa ngokuhlawulwa komrhumo omiselweyo kwiCandelo leKharityhulam ye <i>GET</i> (kubandakanywa i-<i>eLearning</i>), Grand Central Towers, Lower Parliament Street, Private Bag X9114, Cape Town</p> <p>likopi zezi rekhodi zinako ukufunyanwa ngokuhlawulwa komrhumo omiselweyo kwiCandelo loLawulo loCwangciso noKuphathwa kwaMaziko (kubandakanywa iZikolo eziKhuselekileyo), Grand Central Towers,</p>

	Lower Parliament Street, Private Bag X9114, Cape Town
Inkcazelo yamacandelo eerekhodi ezifumaneka ngokuzenzekelayo ezifumanekayo ukwenzela ukukhuphela okanye ukuthenga ngokweSiqendu 15(1)(a)(ii)	Indlela yokufikelela kwierekhodi
(s) Umgaqo-nkqubo ongovavanyo	likopi zezi rekhodi zinako ukufumaneka ngokuhlawulwa komrhumo omiselweyo kwiCandelo loLawulo loVavanyo, Grand Central Towers, Lower Parliament Street, Private Bag X9114, Cape Town
(t) Umgaqo-nkqubo wekharithulam	likopi zezi rekhodi zinako ukufunyanwa ngokuhlawulwa komrhumo omiselweyo kwiCandelo leKharithulam yeGET neFET (kubandakanywa i-eLearning), Grand Central Towers, Lower Parliament Street, Private Bag X9114, Cape Town
(u) Uluhlu lweencwadi ezimiselweyo	
(v) Isicwangciso sobuchule	likopi zezi rekhodi zinako ukufunyanwa ngokuhlawula umrhumo omiselweyo kwiCandelo loNxibelelwano, Grand Central Towers, Lower Parliament Street, Private Bag X9114, Cape Town
(w) Isicwangciso seNtsebenzo soNyaka	
(x) Ifom zeSebe	
Inkcazelo yecandelo leerekhodi ezifumaneka ngokuzenzekelayo simahla ngokwesiqendu 15(1)(a)(iii)	Indlela yokufikelela iirekhodi
(a) Iinkcukacha zabaphicothi-ncwadi bezikolos	likopi zezi rekhodi zifumaneka simahla kwiCandelo i-IMGP, Grand Central Towers, Lower Parliament Street, Private Bag X9114, Cape Town
(b) Iinkcukacha-manani eziphathelele kwinani lezikolo eziye zakhiwa ngokwesiqendu 21 soMthetho weZikolo waseMzantsi Afrika, ka-1996 (UMthetho 84 ka-1996)	
(c) Iziphumo zoviwo (upapasho lokuqala kuphela)	likopi zezi rekhodi zifumaneka simahla kwiCandelo loLawulo lweeMviwo, Grand Central Towers, Lower Parliament Street, Private Bag X9114, Cape Town
(d) ISatifikethi seMatriki: Abaviwa abasisigxina (ikopi engelokhutshelo kuphela)	
(e) Imiyalelo yoviwo	

<p>(f) Isatifikethi sokuchithwa kwezinto ezisetyenzisiweyo, eziphelelwe lixesha, i-<i>eDisposal certificate</i> (VA27 no-28), ezingaseyomfuneko nezingasenakulungiswa</p>	<p>likopi zezi rekhodi zifumaneka simahla kwiCandelo loKuthengwa kweeMpahla neeNkonzo, Grand Central Towers, Lower Parliament Street, Private Bag X9114, Cape Town</p>
<p>(g) Ishedyuli yeethenda ezinokuthelekiswa ezifunyenweyo.</p>	
<p>(h) lithenda zeZikim zoThutho lwaBafundi</p>	
<p>(i) Uluhlu oluvunyiweyo lwababoneleli-nkonzo bezixhobo zokuxhasa ukufunda nokufundisa (izibonelelo zokuxhasa amaziko)</p>	

Inkcazelo yecandelo leerekhodi ezithi ngokuzenzekelayo zifumaneka simahla ngokweSiquendu 15(1)(a)(iii)	Indlela yokufikelela kwiirekhodi
<p>(j) Izatifikethi zokurekhodwa kwezibonelelo (VA12) zee-ofisi, zezikolo, zamaziko nakwaNdlunkulu</p> <p>(k) Ubungqina bentlawulo kubaboneleli-nkonzo</p> <p>(l) Amaxwebhu okubhaliswa njengababoneli-nkonzo bezixhobo zokuxhasa abafundi</p>	likopi zezi rekhodi zifumaneka simahla kwiCandelo loLawulo loKuthengwa kweeMpahla neeNkonzo, Grand Central Towers, Lower Parliament Street, Private Bag X9114, Cape Town
<p>(m) Iindleko zokufunyanwa kwezixhobo zokuxhasa abafundi</p> <p>(n) Uluhlu lweenombolo zefoni ze <i>WCED</i></p> <p>(o) Iingxelo zelahleko ngokubhekiselele ekuqhekezweni, imililo nokonakaliswa kwamaziko</p> <p>(p) Idatha yentlawulo ngeenkonzo zikamasipala ezenzelwa izikolo ezisekwe ngokwesiquendu 21 soMthetho weZikolo waseMzantsi Afrika, ka-1996 (UMthetho 84 ka-1996)</p>	<p>likopi zezi rekhodi zifumaneka simahla kwiCandelo lokuXhasa amaZiko ngeziBonelelo, Grand Central Towers, Lower Parliament Street, Private Bag X9114, Cape Town</p> <p>likopi zezi rekhodi zifumaneka simahla kwiCandelo loLawulo lweMicimbi yezeMali, Grand Central Towers, Lower Parliament Street, Private Bag X9114, Cape Town</p>
<p>(q) Ingcaciso ngezikolo zabafundi abaneemfuno zemfundo ezizodwa hools for learners with special educational needs</p> <p>(r) Inkxaso yemfundo eneemfuno ezizodwa kubafundi nootitshala (kubandakanywa iiklinikhi zezikolo): iinombolo zoqhagamshelwano</p> <p>(s) Iiphamflethi ezingobulungisa kwezesini</p> <p>(t) Iipowusta ezingobulungisa kwezesini</p> <p>(u) Iipowusta ezingeyantlukwano</p> <p>(v) Iipowusta ezichasene nobundlobongela</p> <p>(w) Incwadana yeendaba yemicimbi yophuhliso</p> <p>(x) Izinto zokuxhasa ubulungisa kwezengqesho</p> <p>(y) Incwadana yemigaqo: Ukulondolozwa kwezakhiwo neziza</p> <p>(z) Ulondolozo olucwangcisiweyo</p> <p>(aa) Imisebenzi yolwakhiwo</p>	<p>likopi zezi rekhodi zifumaneka simahla kwiCandelo leMfundo eneeMfuno eziZodwa, Grand Central Towers, Lower Parliament Street, Private Bag X9114, Cape Town</p> <p>likopi zezi rekhodi zifumaneka simahla kwiCandelo loLawulo lwaBasebenzi ngoBuchule, Grand Central Towers, Lower Parliament Street, Private Bag X9114, Cape Town</p> <p>likopi zezi rekhodi zifumaneka simahla kwiCandelo loCwangciso noPhuhliso lweZiseko, Grand Central Towers, Lower Parliament Street, Private Bag X9114, Cape Town</p>

(bb) Ukuqeshwa kwabasebenzi
(kubandakanywa ootitshala
nabasebenzi benkonzo
karhulumente)
(kungabandakanywa
nkcukacha ziyimfihlo nezomntu)

likopi zezi rekhodi zifumaneka simahla
kwiCandelo lokuGaya nokuKhetha
aBasebenzi, Grand Central Towers, Lower
Parliament Street, Private Bag X9114,
Cape Town

Inkcazelo yecandelo leerekhodi zokuzenzekelayo ezifumaneka simahla ngokweSiqendu 15(1)(a)(iii)	Indlela yokufikelela kwiirekhodi
(cc) Ukuthatha umhlalaphantsi kwabaqeshwa	likopi zezi rekhodi zifumaneka simahla kwiCandelo leZibonelelo eziVela
(dd) Imiqathango yenkonzo nezibonelelo zabaesha	kwiNkonzo, Grand Central Towers, Lower Parliament Street, Private Bag X9114, Cape Town
(ee) Izigqibo zamabhunga othethwano	
(ff) linkcukacha ngekhefu (Ngabantu namaqumrhu abanomdla wokwenza isicelo salo)	
(gg) limfuno zonyuselo-sikhundleni	
(hh) Izigqibo zamabhunga othethwano	likopi zezi rekhodi zifumaneka simahla kwiCandelo loBudlelane eMsebenzini, Grand Central Towers, Lower Parliament Street, Private Bag X9114, Cape Town
(ii) limfuno zonyuselo-sikhundleni	likopi zezi rekhodi zifumaneka simahla kwiCandelo lokuGaya nokuKhetha aBasebenzi, Grand Central Towers, Lower Parliament Street, Private Bag X9114, Cape Town
(jj) limfuno zeSatifikethi seMatriki	likopi zezi rekhodi zifumaneka simahla kwiCandelo loLawulo lweeMviwo, Grand Central Towers, Lower Parliament Street, Private Bag X9114, Cape Town
(kk) Ingcaciso yesatifikethi seMfundo Jikelele noQeqesho	likopi zezi rekhodi zifumaneka simahla kwiCandelo leSebe leMfundo ePhakamileyo noQeqesho, Sanlam Building, Golden Acre
(ll) Umgaqo-nkqubo neenkqubo zeMfundo noQeqesho lwaBadala (AET)	

6.3 Inkonzo efumanekayo ebantwini – isiqendu 14(1)(f)

6.3.1 Ezi nkonzo zilandelayo ziyafumaneka kwakhona kwaNdlunkulu weWCED:

- ABanzelwa iiNkonzo - Walk-in Centre, 2nd Floor, Grand Central
- ABanzelwa iiNkonzo zeeMviwo – 2nd Floor Grand Central
- Iziko leeFoni kwaNdlunkulu 0861 92 33 22
- Iziko leFoni leZikolo eziKhuselekileyo 0800 45 46 47
- Iziko lewebhu leWCED – <http://wced.school.za>

linkonzo ezahlukeneyo ezenziwa liSebe zinokufikelelwa ekhompuyutheni apha: <http://wced.school.za/documents/WCED-ServiceAccessSched/index.html>

6.4 Amalungiselelo entatho-nxaxheba yabantu ngokuthethana kunye/okanye ngokuqulunqwa komgaqo-nkqubo kunye/okanye ukwenziwa kwemisebenzi – isiqendu 14(1)(g)

6.4.1 Kumaxesha amaninzi, umthetho umisela ezi nkqubo zilandelayo kwanokuthatha inxaxheba kwabantu:

- Ukwazisa kumajelo opapasho, anjengeGazethi yePhondo, amaphephandaba ephondo namaphephandaba asekuhlaleni/oluntu
- Oomasifundisane abenzelwa amaqela achaphazelekayo
- Ukwazisa kwiziko lewebhu leSebe
- Iincwadi zemigaqo namaxwebhu azizikhokelo (ngamanye amaxesha)

6.5 Iinkqubo zokulungisa ezifumanekayo ngokubhekiselele kwizenzo okanye ekusileleni ukuthathwa kwamanyathelo lisebe - iSiqendun 14(1)(h)

6.5.1 UMthetho osebenzayo kwiSebe unako ukunika ingqwalaselo ngokutsha yangaphakathi kwenkqubo okanye umgaqo wokubhena. Ukuba le nkqubo ifikelele esiphelweni, okanye akukho sibonelelo sinokuphinda senzewe inkqubo enjalo, inkundla inakho ukuchwechwelwa kulungiselelwa ukufunyanwa komyalelo. Kucelwa ujonge isiHlomelo A isiqendu 4 esicacisa ngenkqubo yokubhena yangaphakathi neyenkundla enokulandelwa.

6.5.2 Imibuzo, izikhalazo okanye iibono ngokuphathelele nakuphi na ukwenziwa kwenkonzo liSebe leMfundo leNtshona Koloni kungenziwa ngolu hlobo lulandelayo:

Fonela ku-: 021 -4672000.

Tyelela iSebe leMfundo leNtshona Koloni, e-Grand Central Building/ Private Bag X9114, Cape Town, 8000 – NgoMvulo ukuya ngoLwesihlanu ukususela ngo-07:30 kusasa ukuya ku-16:00 ngenjikalanga.

7 Ukufikeleleka nokufumaneka kwale ncwadi yemigaqo – iSiqendu 14(3)

7.1 Le ncwadi yemigaqo iyafumaneka:

- Kwiziko lewebhu le *WCED* apha: <http://wced.school.za>;
- KwaNdlunkulu we *WCED* ukwenzela uhlolo ngethuba leeyure zesiqhelo zomsebenzi;

8 ISIHLOMELO A: ISIKHOKELO SOKUFIKELELA KWIREKHODI EZINGAFUMANENI NGOKUZENZEKELAYO

1. Ukuzaliswa kwefom yesicelo, intlawulo yesixa-mali nefom yokucela ukufikelela – iZiqendu 18, 19, 22, 29 no-31.

1.1 Ifom yesicelo

- Ifom emiselweyo (eqhotyoshelwe njenge-FOM A) mayizaliswe ngumfaki-sicelo ingeniswe kwiGosa leNgcaciso/kwiGosa leNgcaciso eliSekelayo.
 - Ukuba umfaki-sicelo akakwazi kufunda okanye kubhala okanye ukuzalisa ifom ngenxa yokhubazeko, isicelo sinokwenziwa ngomlomo. IGosa leNgcaciso/iGosa leNgcaciso eliSekelayo liya kuthi emva koko lizalise iFom A egameni lomfaki-sicelo, gcina ifom engelokhutshelo unike umfaki-sicelo ikopi yayo.
 - Isicelo eso sinokwenziwa egameni lomnye umntu kodwa ke isigaba esenziwa kuyo isicelo mayibhalwe kwiFom A.

1.2 Umrhumo

- Umrhumo wokucela nokukhangela irekhodi, kwakunye nokwenza iikopi zerekhodi, umiselwe yimimiselo eyenziwe ngokwePAIA. (Eqhotyoshelwe NJENGOMRHUMO OCWANGCISIWEYO) Kuhlululwa lo mrhumo ulandelayo:
 - Umrhumo wokucela yi-R35.00 ngesicelo ngasinye;
 - Umrhumo wokufikelela ngexesha elifanelekileyo elichithiweyo ukukhangela nokucwangcisa irekhodi. Idiphozithi, engagqithanga kwisithathu somrhumo wokufikelela ngokupheleleyo phambi kokuba ukufikelela kunikwe; kunye
 - Nokwenza iikopi zerekhodi.

1.3 Abenzi-sicelo bafumana ukuxolelwa ekuhlawuleni umrhumo wesicelo:

- Igosa lezolondolozo/umphandi ocela ukufumana ukufikelela kwirekhodi yophando oluphathelele nezolondolozo okanye ukufuna ingcaciso ngokoMthetho wezoLondolozo, ka-1998 (okanye imimiselo eyenziweyo ngokubhekiselele koko.)
- Umntu ocela irekhodi enale ngcaciso yomntu.

1.4 Abenzi-sicelo abafumene ukuxolelwa ekuhlawuleni umrhumo wokufikelela kwingcaciso:

- Umntu ocela irekhodi enengcaciso yomntu.
- Umntu ongatshatanga ofumana umvuzo wonyaka ongagqithanga kuma-R14 712 ngonyaka.
- Abantu abatshatileyo, okanye umntu okanye umlingane wakhe onomvuzo wakhe wonyaka ongagqithanga kuma-R27 192.

1.5 Ifom yesicelo sokufikelela kwingcaciso

- Umfaki-sicelo makabhale kwiFom A ukuba ikopi okanye ukuhlolwa kwerekhodi kuyafuneka.
 - Ukuba ikopi iyafuneka umfaki-sicelo makabonise ifom yoko (eliphepha okanye esekhompuyutheni) kwakunye nolwimi olukhethwayo (apho irekhodi ifumaneka ngeelwimi ezininzi). ISebe aliziguleli kolunye ulwimi iirekhodi ezifumaneka kuphela ngolwimi olunye.
- Irekhodi iya kunikwa ngohlobo olo icelwe ngalo ngaphandle kokuba akukwazi ukwenzeka oko okanye kuya kuphazamisana ngokungenangqiqo nokwenziwa komsebenzi weSebe

2. Isigqibo sokunika okanye sokwala ufikeleleko – iZiqendu 25 no-26

2.1 Ithuba lexesha lokwenza isigqibo

IGosa leNgcaciso/iGosa leNgcaciso eliSekelayo malikhawuleze kangangoko linako ngokusengqiqweni emva kokufumaneka kwama-R35.00 neFom A ezalisiweyo, kodwa ubuncinane engadlulanga ama-30 eentsuku zokufumaneka kwayo, ukugqiba malunga nokunika okanye ukwala isicelo kwanokwazisa umfaki-sicelo ngesigqibo.

2.2 Ukwandiswa kwethuba lexesha

IGosa leNgcaciso/ iGosa leNgcaciso eliSekelayo linako ukwandisa ithuba leentsuku ezingama-30, kanye ukwenzela ithuba elongezelelweyo ama-30 eentsuku kwezi meko zilandelayo:

- isicelo sesenani elikhulu leerekhodi okanye lifuna kukhangelwe inani elikhulu leerekhodi kwanokuqwalasela isicelo ngokungenangqiqo kuphazamisana nemisebenzi yesebe
- isicelo sifuna ukukhangelwa kweerekhodi kwiofisi engekho kwidolophu okanye njengoko leyo yegosa lengcaciso elisekelayo
- uthethwano luyafuneka namanye amasebe e-WCG okanye namanye amaqumrhu karhulumente ukugqiba ngesicelo; okanye
- umfaki-sicelo uvumelene nexesha elongezelelweyo.

3. Irekhodi eziqulathe iinkcukacha zabantu abachaphazelekayo – iziqendu 47, 48

3.1 Isaziso:

IGosa leNgcaciso/ iGosa leNgcaciso eliSekelayo malithathe onke amanyathelo asengqiqweni ukwazisa umntu ochaphazelekayo ngokukhawuleza kangangoko kunako, kodwa oko kwenzeke engadlulanga ama-21 eentsuku sisakuba senziwe isicelo serekhodi eliqulathe:

- linkcukacha zomntu ochaphazelekayo;

- limfihlo zoshishino zomntu ochaphazelekayo;
- linkcukacha zemali, ezoshishino, ubunzululwazi okanye ubugocigoci nokwazisa ngochaphazeleko lwakhe kwezoshishino kusenokubangela umonakalo kwezoshishino okanye kwezemali kumntu lowo uchaphazelekayo;
- iinkcukacha ezinikwe ngumntu ochaphazelekayo ngokuyimfihlelo nokwazisa kwakhe ngochaphazeleko lwakhe kwezoshishino kungadlela indlala okanye kubeke umntu ochaphazelekayo kwimeko engentle kuthethwano ngezemvumelwano okanye kwezinye iinkqubo zothethwano okanye kukhuphiswano lwezoshishino;
- iinkcukacha ezinikwe ngokuyimfihlelo ngumntu ochaphazelekayo nenkcazelo yochaphazeleko lwakhe kwezoshishino ingathi (i) ikhokelele ekwaphulweni komsebenzi oluxanduva lokugcinwa kokuyimfihlelo ofanele ukuboniswa kulowo uchaphazelekayo ngokwemvumelwano; okanye (ii) ukumdlela indlala ngokufanelekileyo ekunikweni kwixesha elizayo kweenkcukacha ezifana nezo nokunokuthi, ngokwemfuno yoluntu, zinikwe; okanye
- linkcukacha malunga nophando olwenziwayo ngumntu ochaphazelekayo okanye egameni lakhe olunokuchaphazela ngokuxhomis' amehlo nokuba ngumntu ochaphazelekayo, iarhente okanye umba wezophando.

3.2 Iingcaciso-ntetho nokuvuma okwenziwa ngumntu ochaphazelekayo

Zingadlulanga iintsuku ezingama-21 zokwaziswa (owe-3.1 apha ngentla) umntu ochaphazelekayo unako (i) ukwenza iingcaciso-ntetho ezibhaliweyo okanye zomlomo kwiGosa leNgcaciso/ kwiGosa leNgcaciso eliSekelayo malunga nokuba kutheni isicelo eso kufuneka singamkelwa; okanye (ii) anike imvume ngokubhala incwadi malunga nokuchaphazeleka kwezoshishino kwerekhodi leyo.

3.3 Isigqibo malunga nengcaciso-ntetho esala isicelo sokufikelela kwingcaciso

IGosa leNgcaciso/ iGosa leNgcaciso eliSekelayo malithi ngokukhawuleza kangangoko kufanelekileyo elinako, kodwa ubuncinane engadlulanga ama-30 eentsuku emva kokukhutshwa kwesaziso (owe-3.1 ngentla) agqibe malunga nokuba ingaba liza kusinika okanye lisale na isicelo sokufikelela kwingcaciso yaye kufuneka lazise umntu ochaphazelekayo kwangokunjalo nomfaki-sicelo ngesigqibo eso.

4. Isibheni sangaphakathi – iziqendu 74 and 75

4.1 Umfaki-sicelo

Umfaki-sicelo unako ukufaka isibheno sangaphakathi, engadlulanga ama-60 eentsuku emva kokuba kukhutshwe isaziso liGosa leNgcaciso/ liGosa leNgcaciso eliSekelayo sokuba:

- sale isicelo isicelo sokufikelela kwingcaciso (jonga owe-2 ngentla);
- ahlawule umrhumo (jonga owe-1.2 ngentla);
- ongeze ithuba elinikiweyo lokunika ufikelelo kwingcaciso (jonga u-2.2 ngentla).

4.2 Umntu ochaphazelekayo

Umntu ochaphazelekayo unako ukufaka isibheno sangaphakathi, engadlulanga ama-30 eentsuku emva kokukhutshwa kwesaziso malunga nesigqibo seGosa leNgcaciso/ seGosa leNgcaciso eliSekelayo ukunika ufikelelo kwirekhodi equlathe iinkcukacha malunga nomntu ochaphazelekayo (jonga owe-3 ngentla).

4.3 Indlela yokubhena yangaphakathi

Isibheno sangaphakathi sifakwa ngokuzalisa ifom emiselweyo (iFom B eqhotyoshelweyo) ize isiwe okanye ithunyelwe kwiGosa leNgcaciso/ kwiGosa leNgcaciso eliSekelayo.

5. Ukufaka isicelo kwinkundla kamantyi

5.1 Umfaki-sicelo okanye umntu ochaphazelekayo unokwenza isicelo kwinkundla kamantyi sokufumana ukuphumzwa okufanelekileyo ukuba inkqubo yokubhena yangaphakathi yayenziwe yaye umenzi-sicelo usashiyeke engaxolanga sisiphumo sesibheno sangaphakathi; okanye

5.2 Isicelo kwinkundla kamantyi masenziwe lingadlulanga i-180 leentsuku emva kokwaziswa kwesiphumo sesibheno sangaphakathi.



ITshatha yoKwenziwa kweNkonzo ISebe leMfundo leNtshona Koloni

Ukuthobela iimfundiso ezisisiseko zikaRhulumente wePhondo leNtshona Koloni ekuzezi:
Ukuba nenkathalo, Ubuchule, Uxanduva lokuphendula, iNtsebenziswano noKwenza iinkonzo

Umbono wethu: Ukudala amathuba abo bonke abafundi ngokuphucula iziphumo zokufunda.

1. Ukuphucula umgangatho kutwini nakwimathematika kwiziko eziliprayimari.
2. Ukuphucula inani labafundi abapasa iSatifikethi seMatrici sikaNtshona.
3. Ukunciphisa inani leziko eziluhluaba kwiziko.

Injongo yethu: Ukubonelela ngemfundo esemgangathweni kubo bonke abafundi kwiphondo ngokwenza oku kulandelayo:

- Ukucwangcisa ulawulo jikelele Wenkqubo yezemfundo.
- Imfundo kwiziko zakahulumeni ezizimeleyo.
- Ukunika inkxaso iziko ezizimeleyo.
- Imfundo kwiziko zemfundo eneemfundo ezizodwa.

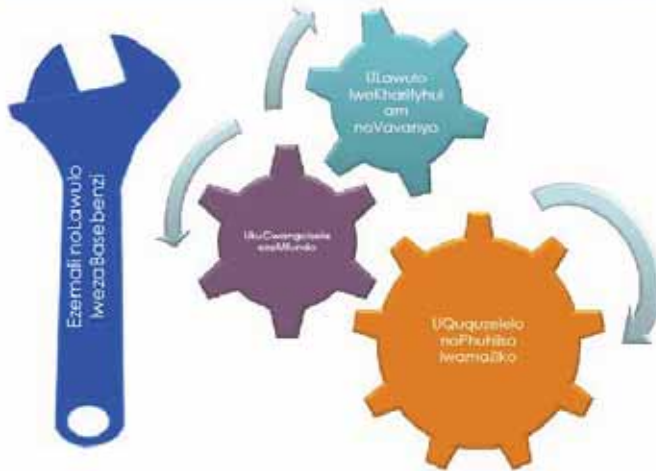
Amathuba oqeqesho oolishala, i-program yokuya ethagetha abathile nozinye indlela zakunciphisa ubuhlwempu namanyathelo ezokhuseleko, ukunika inkxaso oolishala ngokubabonelela ngezona meko zengqesho zisiseko, ngezikhulazi nangeprogram yempho-qela yabazabeni.

Esikwenzela kona ihina:

- Ukukhathala ngenforiphu nangendlela enobunzima ngawo onke amazisa
- Ukuthetha nawe ngeemfundo zenkonzo zakho nenqanaba nomgangatho wenkonzo ezindelekileyo
- Ukunikela ingcaciso epheleleyo xa icelwe ngendlela ecacileyo nesekuhleri
- Ukwenza ukwazi ukufikelela kwangoko kwinkonzo ezikhawulezileyo ezinziwa ngempumelelo ngokunganelana nemigangatho yokwenza kweenkonzo.
- Ukucela usalo nokungisa ingxaki ka kuthe kwakho amagcinge-gingqi ekwenzeni lwenkonzo.
- Ukugcinisa ukuba ufumana kwabisa efilo kuzo zonke iinkonzo ozenzelweyo

Omakwenziwe nguwe:

- Kuluba ngumntu ochubekileyo, onembeko nenforiphu xa uzenzelwa inkonzo ngamagosa ethu.
- Ukunyansela xa ufetha kunye nathi.
- Ukungenisa ingcaciso epheleleyo nechanekileyo ehamba kunye neekopi zakutshane zezafikethi ezizimeleyo zamawebhu afumayo okanye acelweyo.
- Ukufumaneka kwaye uvume ukuba kwiprogram zoqeqesho lokukhobisa njengoko bekuvuyele.
- Ukugqala sicwangciso zosefentiso nokuphuzwa kwesicwangciso, amashulo neengcebiso ezilunyenwe kwisebe.



Imigangatho yethu yoKwenziwa kweNkonzo Jikelele

- Ukubonelela ngeenkonzo ezimfunekayo ngokukhawuleza ukwenza ukuthaba iziphumo zokufunda.
- Oku kubandakanya oolishala nabanye abancadisiyo, vavanyo, iziko, iziko zokufunda, izishobo zokubonisa, ukubaza ngemali, utunikeleli nezolawulo.
- Makungabikho bafundi bangaphesuli kwe-40 kwiziko nganye
- Ukubonelela umfundi ngamnye ngeencwadi zokufunda zezifundo ezithile (subject specific textbooks)
- Ukusingatha yanke imibuzo ngokukhawuleza, ngokuchubekileyo nangenforiphu.
- Ukuphendula imibuzo ethunyelwa ngelori zingadulanga iyure eziyi-24.
- Ukuzisa abathumele imbalelwano ukuba ikhale kwintuuku esi-3 nokucebisa abenzelwa inkonzo nokutho ukuba bayindlele nini na impendulo.
- Ukunika abenzelwa inkonzo ingxelo ngokuchubekileyo ukuba kutho ukubazama.
- Ukusingatha zonke izicelo zingadulanga intuuku eziyi-14.
- Ukucela usalo ngeempasamo kuzo kulathwe inyathelo lokuzungisa.
- Ukuthetha ngokuphucula ukwenziwa lwenkonzo aho nganyaka.
- iService Standard Schedule yethu neemkukacha zohagamenhelo zabaphathi abakhulu bethu, namaqandelo neeyunithi zifumanika apha: <http://wced.school.za/home/component/organ.html>

UKWASEMAMA NINHLI

Sizwabisa kakhulu ukuba nikwazi ukufumana apha ikhoyo lokhoyo zethu ziyafikeleka kubanzi abakhubazileyo. Okhagamenhelo ne-Ofti yethu siMfundo ekuthathane nawe, kwidivuluculo okanye ungene kwiziko lewebhu lethu.

IZIBHEZIMBENZI

KwCandela laBenza iNkonzo : 7:00 – 17:00 (ngeentuuku ziveki)
Abazabeni abase-ofisi : 7:30 – 16:00 (ngeentuuku ziveki)
Iinkonzo yokuphendula kwefoni emva kweyure zizezibezwa kwiziko lefoni.

- Central:** Private Bag X4, Mowbray, 7705, Gate House 2, Alexandra Provincial Office Precinct, Haven Road, Garden Village, Maitland, Tel. no. 021 514 6700 Fax. no. 021 514 6953
- East:** Private Bag X23, Kuls River, 7579, Belhar Road, Off Noolenfontein Road, Kuls River, Tel. no. 021 900 7000 Fax. no. 086 556 9519
- South:** Private Bag X2, Mitchell's Plain, 7785, Lentegour Hospital, AZ Berman Drive, Lentegour, Mitchell's Plain, Tel. no. 021 370 2005 Fax. no. 021 372 1856
- North:** Private Bag X45, Parow, 7500, Timmerman Street, Parow, Tel. no. 021 938 3000 Fax. no. 021 938 3181
- Cape Winelands:** Private Bag X3102, Worcester, 6849, 9 Durban Street, Worcester, Tel. no. 023 348 4602 Fax. no. 023 342 4138
- Eden & Central Karoo:** Private Bag X6510, George, 6530, Rentsburg Court, 42 Courtenay Street, George, Tel. no. 044 809 8300 Fax. no. 044 873 2253
- Overberg:** Private Bag X08, Caledon, 7230, 15 College Street, Caledon, Tel. no. 028 214 7300 Fax. no. 028 214 7400
- West Coast:** Private Bag X3026, Paarl, 7620, 6 Hospital Street, Paarl, Tel. no. 021 860 1207 Fax. no. 021 860 1230e

Iifasitshi yokunika inkcazo ngokvhubekayo

Le iifasitshi yethu yokuvakala izikhatalo nezincwadi onqathu ngayo. Uvavalele umbuzo wakho kumntu okanye kwiziko elenze inkonzo. Income Sebe WCED ngenkonzo elenzileyo ukhale ngenkonzo engentlango ayenzelweyo okanye ufuna indlela yokungqina kokungahoywa kwakho kuba ikhatalo lakho sityelwe ngahoywanga. Iimathwe ngenqongolo ngabaqondisi ngabaqondisi beSebe WCED. Zonke izikhatalo ezibhalweyo aya kufumana impendulo ebhalweyo zingadulanga intuuku eziyi-14. Unokubhala apha: WCED Feedback, Directorate, Communication, Private Bag X5114, Cape Town, 8000 or <http://wced.school.za/home/webmaster.html>

Head Office

Minister of Education
Private Bag X9161, Cape Town, 8000
23rd Floor, Golden Acre Building, Adderley Street, Cape Town
Tel. no. 021 467 2523
Fax. no. 021 425 5689

Head of Department
Private Bag 9114, Cape Town, 8000
9th Floor, Grand Central Towers, Parliament Street, Cape Town
Tel. no. 021 467 2535
Fax. no. 021 467 2996

Employment & Salary Enquiries
Call Centre Tel. no. 0961 923 322
Safe Schools Call Centre
Tel. no. 080 045 4647
Switchboard
Tel. no. 021 467 2000
Website: www.wced.school.za

Isibhengezo seGunya leSigqeba:

Ms. Debbie Schärer, ndibhalela iSebe lam ngokungqinelana neCandela III, C.2 leMibalelo yeNkonzo kaRhulumente, 2001, njengoko ibukelele ibungulo, ukuba ibambelane ngayo nale Tshatha yoKwenziwa kweNkonzo.

ISAYINWE : NGU- D SCHÄFER 2014/09/08
UMphathiswa D Schäfer Umhla

ISICELO SOKUFIKELELA KWIREKHODI YEQUMRHU LIKARHULUMENTE

(ISiqendu 18(1) soMthetho oKhuthaza uKufikelela kwiiNkcukacha, wama-2000 (UMthetho No. 2 wama-2000))

[Ummiselo 6]

ILUNGISELELWE UKUSETYENZISWA LISEBE	
Inombolo yesalathiso:	
Isibheni sifunyenwe ngomhla	ngu (xela iwonga, igama nefani yegosa lengcaciso/yegosa lengcaciso elisekelayo) ngomhla (umhla) apha (indawo).
Umrhumo wokufaka isicelo (ukuba ukho):	R
Idiphozithi (ukuba ukho):	R
Umrhumo wokufikelela ingcaciso:	R
ISIGNITSHA YEGOSA LENGCACISO/ YEGOSA LENGCACISO ELISEKELAYO	

A. linkcukacha zequmrhu likarhulumente

IGosa leNgcaciso/ iGosa leNgcaciso eliSekelayo:

B. linkcukacha zomntu ocela ukufikelela kwirekhodi

- | |
|---|
| <p>(a) <i>linkcukacha zomntu ocela ukufikelela kwirekhodi mazirekhodwe apha ngezantsi.</i></p> <p>(b) <i>Faka idilesi kunye/okanye inombolo yefeksi eya kwiRiphabliki leyo kufuneka kuthunyelwe kuyo.</i></p> <p>(c) <i>Ubungqina besikhundla/bewonga esifakwa phantsi kwalo isibheni, ukuba bukho, mabuqhotyoshelwe.</i></p> |
|---|

Amagama apheleleyo nefani:

Inombolo yesazisi: Idilesi yeposi:

Inombolo yefeksi: Inombolo yefoni: Idilesi ye-imeyili:

Igunya elenzelwa phantsi kwalo isicelo, xa sisenziwa egameni lomnye umntu:

C. linkcukacha zomntu ekwenziwa isicelo egameni lakhe

Eli candela malizaliswe kuphela ukuba isicelo sengcaciso senziwa egameni lomnye umntu.

Amagama apheleleyo nefani:

Inombolo yesazisi:

D. Iinkcukacha zerekhodi

- (a) *Nika iinkcukacha ezipheleleyo zerekhodi ekwenziwa isicelo sokuyifikelela, kuqukwa nenombolo yesalathisi ukuba siyaziwa nguwe, ukwenzela ukuba irekhodi ibe nokufumaneka.*
- (b) *Ukuba isithuba esinikiweyo asanelanga kucelwa uqhubeke kwifoliyo ezimeleyo uze emva koko uyiqhoboshele kule fom. Umfaki-sicelo makasayine zonke iifoliyo ezongezelelweyo.*

1. Inkcazelo yerekhodi okanye yesahluko serekhodi esichaphazelekayo:
2. Inombolo yesalathi, ukuba ikho:
3. Naziphi ezinye iinkcukacha zerekhodi:

E. Imirhumo

- (a) *Isicelo sokufikelela kwirekhodi, engeyiyo irekhodi eneenkcukacha zakho, siya kuqwalaselwa kuphela emva kokuba umrhumo wokucela sewuhlawulwe.*
- (b) *Uya kwaziswa ngesixa esifunekayo ukuba sihlawulwe njengomrhumo wokucela.*
- (c) *Umrhumo ohlawulelwa ukufikelela kwirekhodi uxhomekeke kuhlobo olo lokufikelela lufunekayo kwanexesha elifanelekileyo elifunekayo ukukhangela nokulungiselela irekhodi.*
- (d) *Ukuba ukufanele ukuxolelwa kwintlawulo yawo nawuphi umrhumo, kucelwa uchaze isizathu soko.*

Isizathu sokuxolelwa kwintlawulo yemirhumo sesi:

F. Uhlobo lokufikelela kwirekhodi

Ukuba uthintelwa lukhubazeko lokufunda, ukubukela okanye ukumamela kwirekhodi yohlobo lokufikelela olunikwe kowo-1 ukuya kowe-4 apha ngezantsi, chaza ukhubazeko lwakho ubhale nohlobo lwerekhodi olufunekayo ngalo.

Ukhubazeko:	Uhlobo ekufuneka ibe lulo irekhodi:
-------------	-------------------------------------

<p><i>Phawula ibhokisi efanelekileyo ngo-"X".</i> AMAGQABANTSHINTSHI: (a) <i>Inkcazelo yakho ngohlobo lokufikelela ingcaciso efunekayo ixhomekeke kuhlobo irekhodi efumaneka ngalo.</i> (b) <i>Ufikelelo kuhlob oluceliweyo lunokungavunywa kwiimeko ezithile. Kwimeko elolo hlobo uya kwaziswa ukuba ufikelelo luya kunikwa ngenye indlela.</i> (c) <i>Umrhumo ohlawulwayo ukufikelela kwirekhodi, ukuba ukho, uya kugqitywa ngokuyinxalenye yindlela leyo ukufikelela kucelwa ngayo.</i></p>	
---	--

1. Ukuba irekhodi ikuhlobo lokubhaliweyo okanye lokushicilelweyo -	
Ikopi yerekhodi*	Ukuhlolwa kwerekhodi

2. Ukuba irekhodi iqulathe imifanekiso yokubonwayo - (oku kuquka iifoto, izilayidi, ukurekhodwa kweevidiyo, imifanekiso eyenziwe ngekhompyutha, izazobe, njl. njl.)	
buka imifanekiso	Ikopi yemifanekiso* Ukukhutshelwa kwemifanekiso*

3. Ukuba irekhodi iqulathe amazwi arekhodiweyo okanye iinkcukacha ezinokuveliswa kwakhona zibe sisandi -	
mamela ingoma yesandi (ikhasethi ye-odiyo)	khuphela ingoma yesandi* (uxwebhu olubhaliweyo okanye olushicilelweyo)

4. Ukuba irekhodi isekhompnyutheni okanye kubuxhakaxhaka okanye kwimo efundeka ngomatshini -	
Ikopi eshicilelweyo yerekhodi*	Ikopi eshicilelweyo yengcaciso ethathwe kwirekhodi* Ikopi ekwimo efundeka ngekhompyutha* (istifi okanye idiski)

*Ukuba wawucele ikopi okanye ukhutshelo lwerekhodi (engentla), ingaba unqwenela ukuba kuthunyelwe kuwe ngeposi ikopi okanye ukhutshelo (olungentla)? Makuhlawulwe umrhumo weposi.	IWE	HAYI
---	-----	------

<i>Qaphela ukuba xa irekhodi ingafumanekiyo ngolwimi olukhethayo, ukuyifikelela irekhodi kunokwenziwa ngolwimi efumaneka ngayo irekhodi.</i>	
Ubunokuthanda ukuba ibe koluphi ulwimi irekhodi?	

G. Isaziso ngesigqibo esiphathelele kwisicelo sokufikelela ingcaciso

Uya kwaziswa ngokubhalelwa incwadi malunga nokuba isicelo sakho sivunyiwe/sikhatyiwe na. Ukuba unqwenela ukwaziswa ngenye indlela, kucelwa uchaze indlela leyo unike neenkukacha ezifunekayo ukwenzela ukuba kuphunyezwe isicelo sakho.

Ubunganqwenela ukwaziswa njani ngesigqibo esiphathelele kwisicelo sakho sokufikelela kwirekhodi?

Isayinwe ngalo mhla: wama-20--

ISIGNITSHA YOMFAKI-SICELO / UMNTU
EKWENZIWA ISICELO EGAMENI LAKHE

ISAZISO SESIBHENO SANGAPHAKATHI

(ICandelo 75 lomthetho iPromotion of Access to Information Act, 2000 (UMthetho No. 2 wama-2000))
[Ummiselo 6]

XELA INOMBOLO YAKHO YESALATHISO:

A. Iinkcukacha zequmrhu loluntu

IGosa loLwazi/iSekela-gosa loLwazi:

B. Iinkcukacha zowenza isicelo/zomnye umntu ofaka isibheno sangaphakathi

- | |
|---|
| <p>(a) <i>Iinkcukacha zomntu ofaka isibheno sangaphakathi mazigcwaliswe apha ngasezantsi.</i></p> <p>(b) <i>Ubungqina besikhundla/segonga esifakwa phantsi kwalo isibheno, ukuba bukhona mabunamatheliswe.</i></p> <p>(c) <i>Xa ofaka isibheno ingomnye umntu ongenguye lowo wayefake isicelo ngaphambili, iinkcukacha zowenza isicelo mazixelwe apha ku-C ngasezantsi.</i></p> |
|---|

Amagama apheleleyo nefani:

Inamba yesazisi:

Idilesi yePosi:

Inamba yeFeksi:

Inamba yomnxeba:

Idilesi yeE-mail:

Isikhundla/iwonga esifakwa phantsi kwalo isibheno sangaphakathi egameni lomnye umntu:

C. Iinkcukacha zowenza isicelo

<i>Eli candelo kufuneka ligcwaliswe KUPHELA xa ingomnye umntu (ngaphandle kowenza isicelo) ofaka isibheno sangaphakathi.</i>
--

Amagama apheleleyo nefani:

Inamba yesazisi:

D. Isizathu sokufakwa kwesibheno

Phawula ngo "X" esona sizathu sokufakwa kwesibheno sangaphakathi kwibhokisi efanelekileyo:

	Ukwaliwa kwesicelo sokufikelelela kulwazi.
	Isigqibo esiphathelele kwimirhumo emiselwe ngokwecandelo 22 loMthetho.
	Isigqibo esiphathelele ekwandisweni kwexesha ekufanele kuphendulwe ngalo isicelo ngokwecandelo 26(1) loMthetho.
	Isigqibo sokwaliwa kokunikwa kolwazi ngohlobo olucelwe ngalo ngumfaki-sicelo ngokwecandelo 29(3) loMthetho.
	Isigqibo sokunika imvume yokufikelela kulwazi.

E. Iimeko esinokufakwa phantsi kwazo isibheno

Ukuba isithuba esinikiweyo asanelangan nceda uqhubeke kwiphepha elilelinye uze ulinamathisele kule fom. Kufuneka uwasayine onke amaphepha ongezelelweyo.

Xela imeko osifaka phantsi kwayo isibheno sangaphakathi:

Xela naluphi na olunye ulwazi olufanelekileyo ukuze siqwalaselwe isibheno.

F. Isaziso sesigqibo ngesibheno

Uya kwaziswa ngokubhalelwa ngesigqibo sesibheno sakho sangaphakathi. Xa unqwenela ukwaziswa ngenye indlela, nceda ucacise uze ubonelele ngeenkukacha ukuze kuphunyezwe isicelo sakho.

Xela indlela ofina ukwaziswa ngayo:

linkcukacha zaloo ndlela:

Ityikitywe e _____ umhla _____ 20

UTYIKITYO LOFAKA ISIBHENO

ILUNGISELELWE UKUSETYENZISWA LISEBE :

IINKCUKACHA EZISESIKWENI ZESIBHENO SANGAPHAKATHI:

Isibheni sifunyenwe ngomhla _____ ngu

(xela iwonga, igama nefani yegosa lolwazi/isekela-gosa lolwazi).

Isibheni sikhathshwa zizizathu ezilungiselelwe igosa lolwazi/isekela-gosa lolwazi, kunye, apho kufanelekileyo, neenkukacha zakhe nawuphi na omnye umntu ochaphazelekayo zifakwe ligosa lolwazi/isekela-gosa lolwazi (ngomhla othile) kwigunya-bantu elifanelekileyo.

ISIPHUMO SESIBHENO :

ISIGQIBO SEGOSA LOLWAZI/SESEKELA-GOSA LOLWAZI SINGQINWA /SIMELWE ENDAWENI

YASO SISIGQIBO ESITSHA

ISIGQIBO ESITSHA:

_____ UMHLA

IGUNYA-BANTU ELIFANELEKILEYO

UMHLA ESIFUNYENWE NGAWO LIGOSA LOLWAZI/LISEKELA-GOSA LOLWAZI KWIGUNYA-BANTU ELIFANELEKILEYO:

12. ISIHLOMELO

IMIRHUMO

Isihlomelo A

IMIBA GABALALA: IRHAFU-NTENGO

Amaqumrhu karhulumente namashishini abhaliswe phantsi kweValue-Added Tax Act, 1991 (Umthetho Nomb. 89 ka-1991), njengoosomashishini bangafaka irhafu-ntengo kuyo yonke imirhumo ebekwe kwesi Sihlomelo.

ICANDELO I
IMIRHUMO EMALUNGA NESIKHOKELO

1. Umrhumo wekopi yesikhokelo njengoko uchaziwe kumqathango 2 (3) (b) no-3 (4) (c) yiR0,60 ngefotokopi nganye yephepha elingu-A4 okanye inxalenye yalo.

ICANDELO II
IMIRHUMO YAMAQUMRHU KARHULUMENTE

1. Umrhumo wekopi yemanyuwali njengoko uchaziwe kumqathango 5 (c) yiR0,60 ngefotokopi nganye yephepha elingu-A4 okanye inxalenye yakhe.
2. Imirhumo yokwenza uxwebhu kwakhona ekubhekiswe kulo kumqathango 7 (1) imi ngolu hlobo:

	R
(a) Ngefotokopi nganye yephepha elingu-A4 okanye inxalenye yalo	0,60
(b) Ngekopi nganye eprintiweyo yephepha elingu-A4 okanye inxalenye yalo elikwikhompyutha okanye elikwimo yokufundeka ngomatshini	0,40
(f) Ikopi ekwimo enokufundeka ngomatshini—	
(i) ekwidiski esistifi	5,00
(ii) ikhompakti disk	40,00
(d)(i) Ukukhutshelwa kwemifanekiso kwiphepha elingu-A4 okanye kwinxalenye yalo	22,00
(ii) Yekopi yemifanekiso	60,00
(e) i) Ukukhutshelwa kwento eteyitshiweyo kwiphepha elingu-A4 okanye kwinxalenye yalo	12,00
(ii) Ikopi yento eteyitshiweyo	17,00

3. Umrhumo wesicelo ohlawulwa ngumceli ngamnye, ngaphandle kwesicelo sabucala, ekubhekiswe kuso kumqathango 7 (2) yiR35,00.

4. Imirhumo yoxwebhu ehlawulwa ngumceli ngamnye ekubhekiswe kuyo kumqathango 7 (3) imi ngolu hlobo:

	R
(1) (a) Ngefotokopi nganye yephepha elingu-A4 okanye inxalenye yakhe	0,60

(b)Ngekopi nganye eprintiweyo yephepha elingu-A4 okanye inxalenye yalo elikwikhompnyutha okanye elikwimo yokufundeka ngomatshini	0,40
(c)Ikopi ekwimo enokufundeka ngomatshini—	
(i) ekwidiski esistifi	5,00
(ii) ikhompakti diski	40,00
(d)(i) Ukukhutshelwa kwento eteyitshiweyo kwiphepha elingu-A4 okanye kwinxalenye yalo	22,00
(ii)Yekopi yemifanekiso	60,00
(e)(i)Ukukhutshelwa kwento eteyitshiweyo kwiphepha elingu-A4 okanye kwinxalenye yalo	12,00
(ii)Ikopi yento eteyitshiweyo	17,00
(f)Ukukhangela nokwenza irekhodi lenkcazo, R15,00 ngeyure nganye okanye inxalenye yayo, ngaphandle kweyure yokuqala ekufuneka ichithiwe ukukhangela okanye ukwenza irekhodi elo.	

(2)Ukulungiselela icandelo 22 (2) loMthetho, kusetyenziswa le miqathango ilandelayo:

- (a)Kufuneka kube kugqithiwe kwiiyure ezi-6 phambi kokuba kuthwe makuhlalulwe idiphozithi; yaye
- (b)isinye kwisithathu semali yokufumana uxwebhu sihlawulwa njengediphozithi ngumfaki-sicelo.

(3)Imali yokuposa iyahlawulwa xa ikopi yerekhodi kufuneka iposelwe umfaki-sicelo.

ICANDELO III IMIRHUMOYAMAQUMRHU ABUCALA OKANYE AMASHISHINI

- Umrhumo wekopi yemanyuwali njengoko uchaziwe kumqathango 9 (2) (c) yiR1,10 ngefotokopi nganye yephepha elingu-A4 okanye inxalenye yakhe.
- Imirhumo yokwenza uxwebhu kwakhona ekubhekiswe kuyo kumqathango 11 (1) imi ngolu hlobo:

	R
(a)Ngefotokopi nganye yephepha elingu-A4 okanye inxalenye yalo	1,10
(b)Ngekopi nganye eprintiweyo yephepha elingu-A4 okanye inxalenye yalo elikwikhompnyutha okanye elikwimo yokufundeka ngomatshini	0,75
(c)Ikopi ekwimo enokufundeka ngomatshini—	
(i)ekwidiski esistifi	7,50
(ii)ikhompakti diski	70,00

- | | |
|--|-------|
| (d)(i)Ukukhutshelwa kwemifanekiso kwiphepha elingu-A4 okanye kwinxalenye yalo | 40,00 |
| (ii)Yekopi yemifanekiso | 60,00 |
| (e)(i)Ukukhutshelwa kwento eteyitshiweyo kwiphepha elingu-A4 okanye kwinxalenye yalo | 20,00 |
| (ii)Ikopi yento eteyitshiweyo | 30,00 |
3. Umrhumo wesicelo ohlawulwa ngumceli ngamnye, ngaphandle kwesicelo sabucala, ekubhekiswe kuso kumqathango 11 (2) yiR50,00.
4. Imirhumo yoxwebhu ehlawulwa ngumceli ngamnye ekubhekiswe kuyo kumqathango 11 (3) imi ngolu hlobo:

- | | |
|--|-------|
| | R |
| (1)(a)Ngefotokopi nganye yephepha elingu-A4 okanye inxalenye yalo | 1,10 |
| (b)Ngekopi nganye eprintiweyo yephepha elingu-A4 okanye inxalenye yalo elikwikhompuyutha okanye elikwimo yokufundeka ngomatshini | 0,75 |
| (c)Ikopi ekwimo enokufundeka ngomatshini— | |
| (i)ekwidiski esistifi | 7,50 |
| (ii)ikhompakti disk | 70,00 |
| (d)(i)Ukukhutshelwa kwemifanekiso kwiphepha elingu-A4 okanye kwinxalenye yalo | 40,00 |
| (ii)Yekopi yemifanekiso | 60,00 |
| (e)(i)Ukukhutshelwa kwento eteyitshiweyo kwiphepha elingu-A4 okanye kwinxalenye yalo | 20,00 |
| (ii)Ikopi yento eteyitshiweyo | 30,00 |
| (f)Ukukhangela nokwenza irekhodi lenkcazo, R30,00 nganye okanye inxalenye yayo, ngaphandle kweyure yokuqala ekufuneka ichithiwe ukukhangela okanye ukwenza irekhodi elo. | |
- (2)Ukulungiselela icandelo 54 (2) loMthetho, kusetyenziswa le miqathango ilandelayo:
- (a)Kufuneka kube kugqithiwe kwiiyure ezi-6 phambi kokuba kuthwe makuhlulwe idiphozithi; yaye
- (b)isinye kwisithathu semali yokufumana uxwebhu sihlawulwa njengediphozithi ngumfaki-sicelo.

(3) Imali yokuposa iyahlawulwa xa ikopi yerekhodi kufuneka iposelwe umfakisicelo.