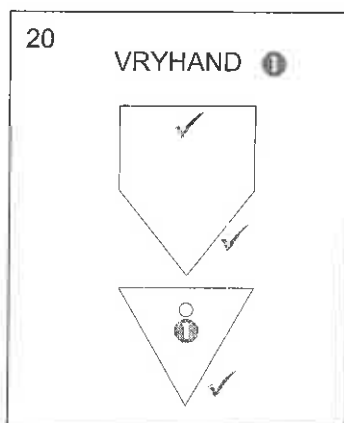
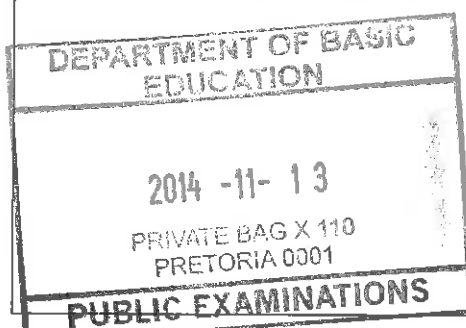
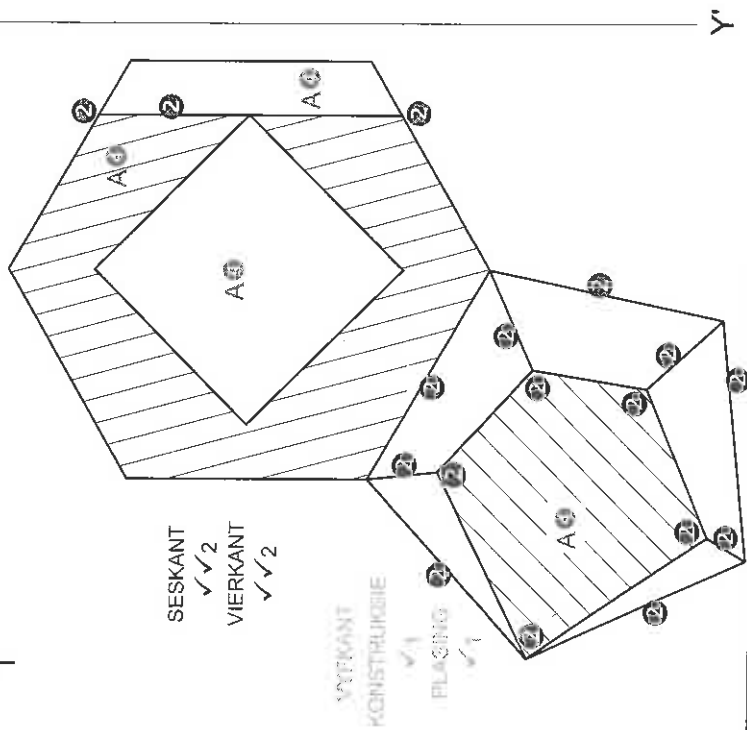
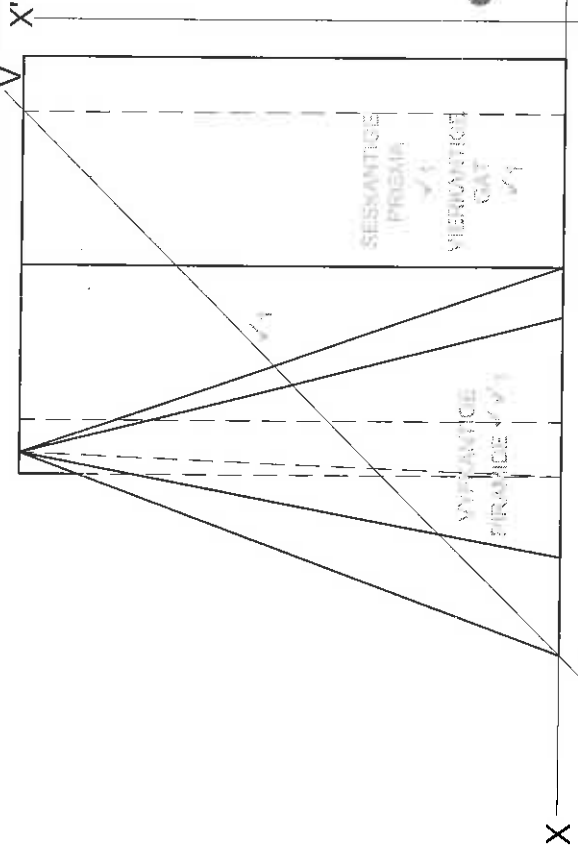
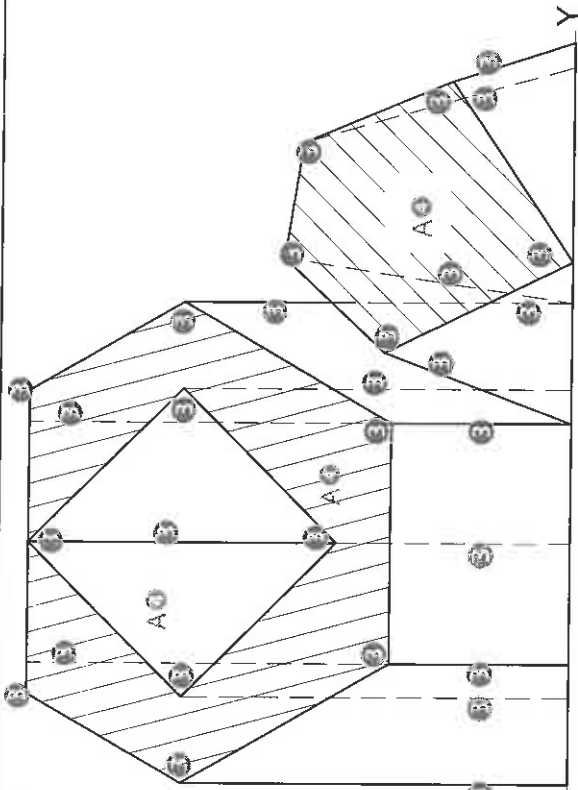


ANTWOORDE		
1	2014-08-05	1
2	BEVESTIG AFMETINGS EN HOOGTES	1
3	1 : 500	1
4	VERANDER PAD	1
5	TEER	1
6	KONFERENSIESENTRUM	1
7	GEEL	1
8	BLOU	1
9	HOOGTE BO SEEVLAK/HOEKHOOGTE	1
10	MANGAT	1
11	GRENSLYN	1
12	SYPAADJIE	1
13	BEHEERPUNT/WAGHUIS	1
14	GEKOMPakteerde HARDE PUIN	1
15	KRUINWEG	2
16	24	2
17	75,128	2
18	129,6 [berekening 1, antwoord 1, verwerk na meters 1]	3
19	865,67 m <sup>2</sup> [berekening 1, antwoord 1, meter <sup>2</sup> 1]	3
20	(Sien hieronder)	4

TOTAAL: 30

VRAESTEL 1 VRAAG 1  
GRAAD 12  
NOVEMBER 2014  
MEMORANDUM



*[Handwritten signatures and initials]*

**DEPARTMENT OF BASIC EDUCATION**  
  
2014 -11- 13  
PRIVATE BAG X 110  
PRETORIA 0001  
**PUBLIC EXAMINATIONS**

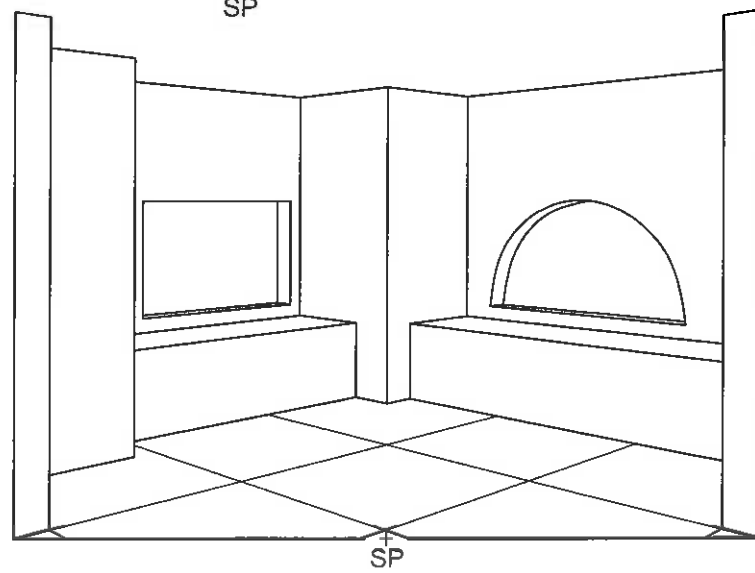
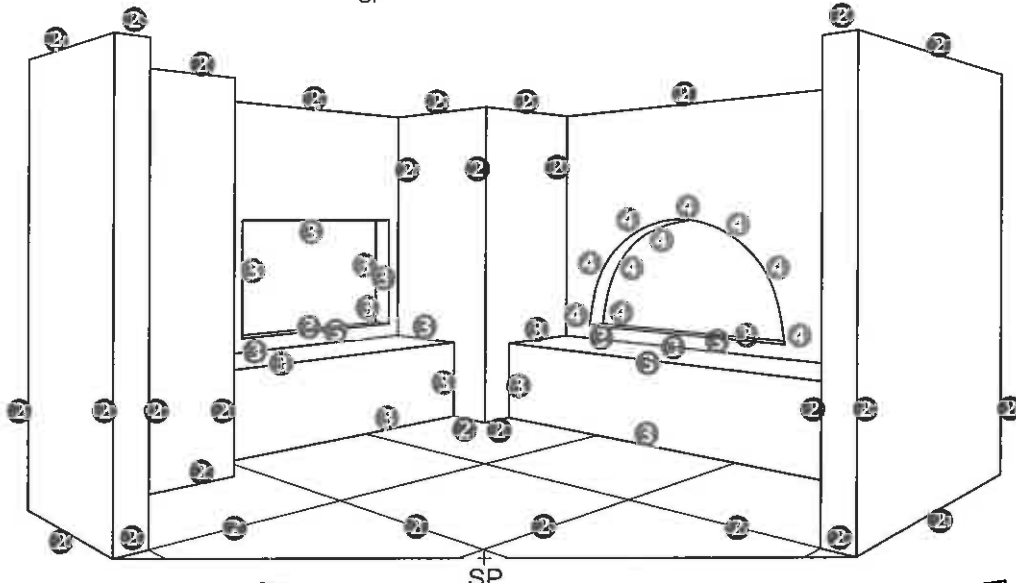
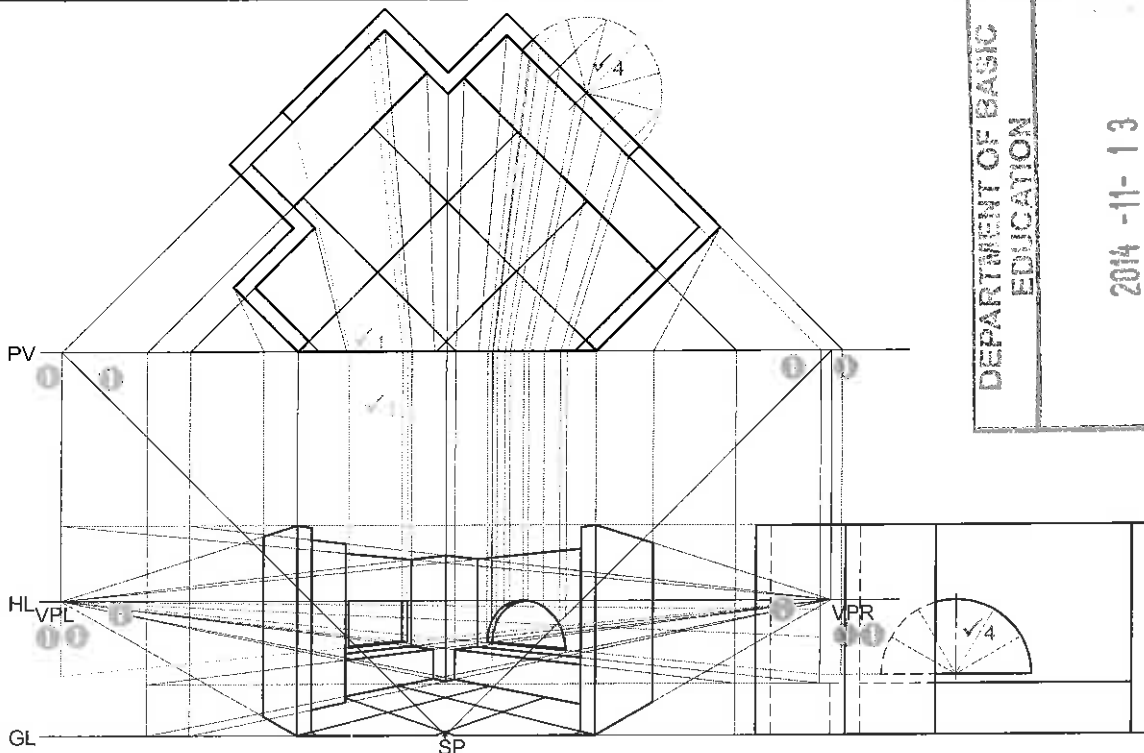
ASSESSERINGSKRITERIA	
1	KONST. + VOORAANSIG 7
2	DEURSNEE-BOAANSIG 12½
3	DEURSNEE-LINKERAANSIG 15
4	ARSERING 3½
<b>TOTAAL 38</b>	

SESKANT ✓✓2  
VIERKANT ✓✓2

SYTRANT KONSTRUKSIE ✓1  
PLASING ✓1

VRAESTEL 1 VRAAG 2  
GRAAD 12  
NOVEMBER 2014  
MEMORANDUM

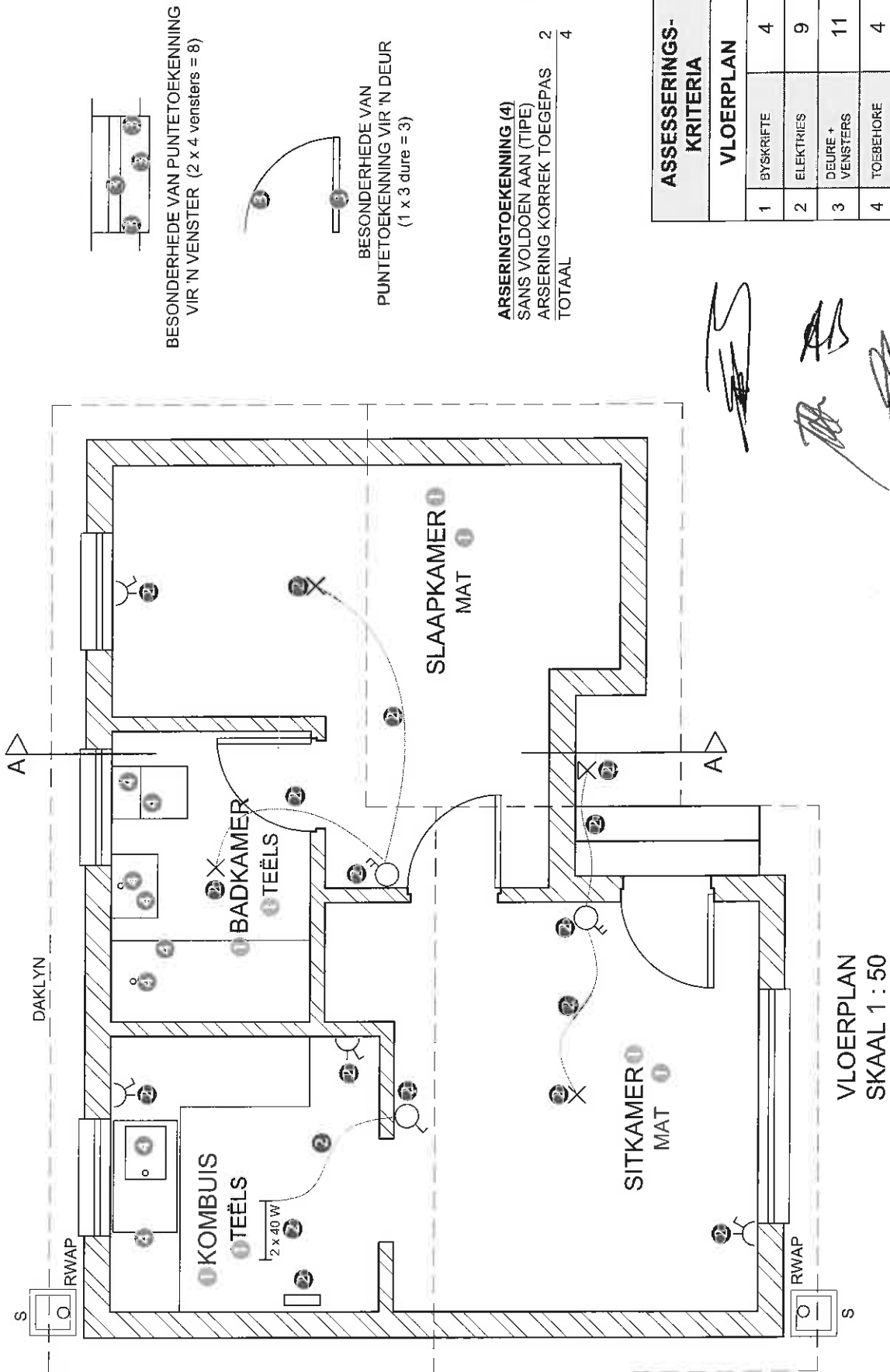
DEPARTMENT OF BASIC EDUCATION  
 2014 -11- 13  
 PRIVATE BAG X 110  
 PRETORIA 0001  
**PUBLIC EXAMINATIONS**



*[Handwritten signatures and initials]*

ASSESSERINGSKRITERIA		
1	KONSTRUKSIE + VPs	7
2	MURE + TEELS	15
3	OPENINGE + SITPLEKKE	10
4	HALFSIRKEL	7
<b>TOTAAL</b>		<b>39</b>

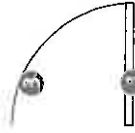
VRAESTEL 1 VRAAG 3  
 GRAAD 12  
 NOVEMBER 2014  
 MEMORANDUM



BESONDERHEDE VAN PUNTTOEKENNING VIR 'N VENSTER (2 x 4 vensters = 8)



BESONDERHEDE VAN PUNTTOEKENNING VIR 'N DEUR (1 x 3 dure = 3)



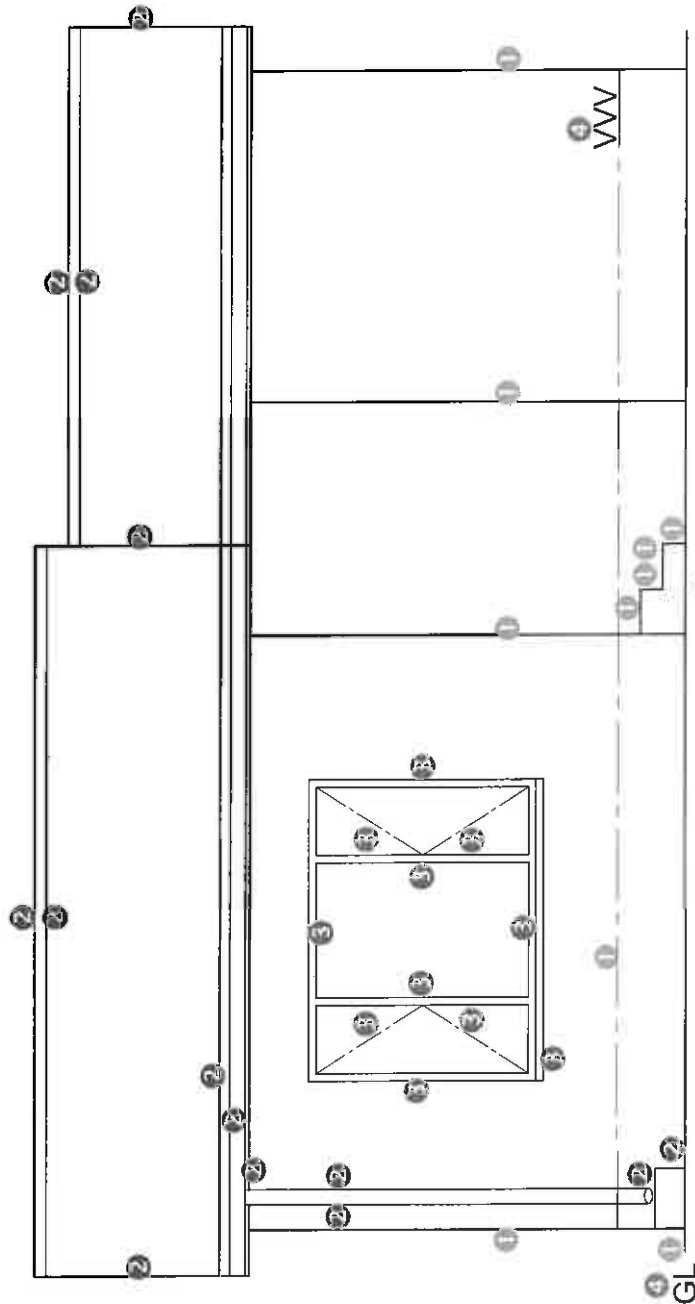
ARSRINGTOEKENNING (4) SANS VOLDOEN AAN (TIP) ARSRING KORREK TOEGEPAS 2 TOTAAL 4

ASSESSERINGS-KRITERIA	
VLOERPLAN	
1	BYSKRIFTE 4
2	ELEKTRIES 9
3	DEURE + VENSTERS 11
4	TOEBEHORE 4
5	ARSERING 4
<b>SUBTOTAAL 32</b>	

*Handwritten signatures and initials.*

DEPARTMENT OF BASIC EDUCATION  
 2014 -11- 13  
 PRIVATE BAG X 118  
 PRETORIA 0001  
 PUBLIC EXAMINATIONS

VRAESTEL 1 VRAAG 4  
 GRAAD 12  
 NOVEMBER 2014  
 MEMORANDUM



NOORDAANSIG

ASSESSERINGS-KRITERIA		
NOORDAANSIG		
1	MUUR + VW	5
2	DAK + FASSIE-PLANK + GEUT + RWAP	7
3	VENSTER	5/2
4	BYSKRIFTE	1/2
SUBTOTAAL		19

DEPARTMENT OF BASIC EDUCATION

2014 -11- 13

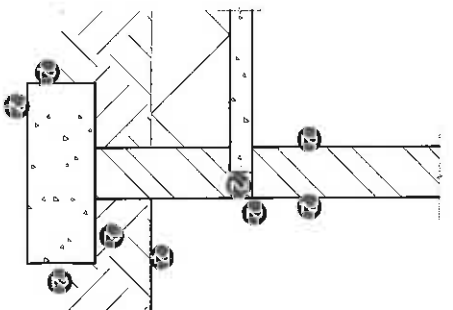
PRIVATE BAG X 110  
PRETORIA 0001

PUBLIC EXAMINATIONS

VRAESTEL 1 VRAAG 4  
GRAAD 12  
NOVEMBER 2014  
MEMORANDUM

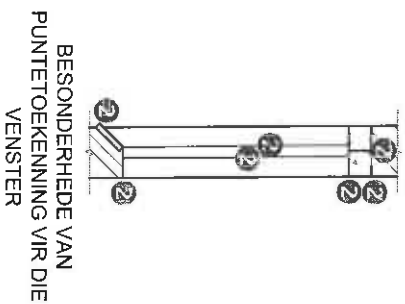
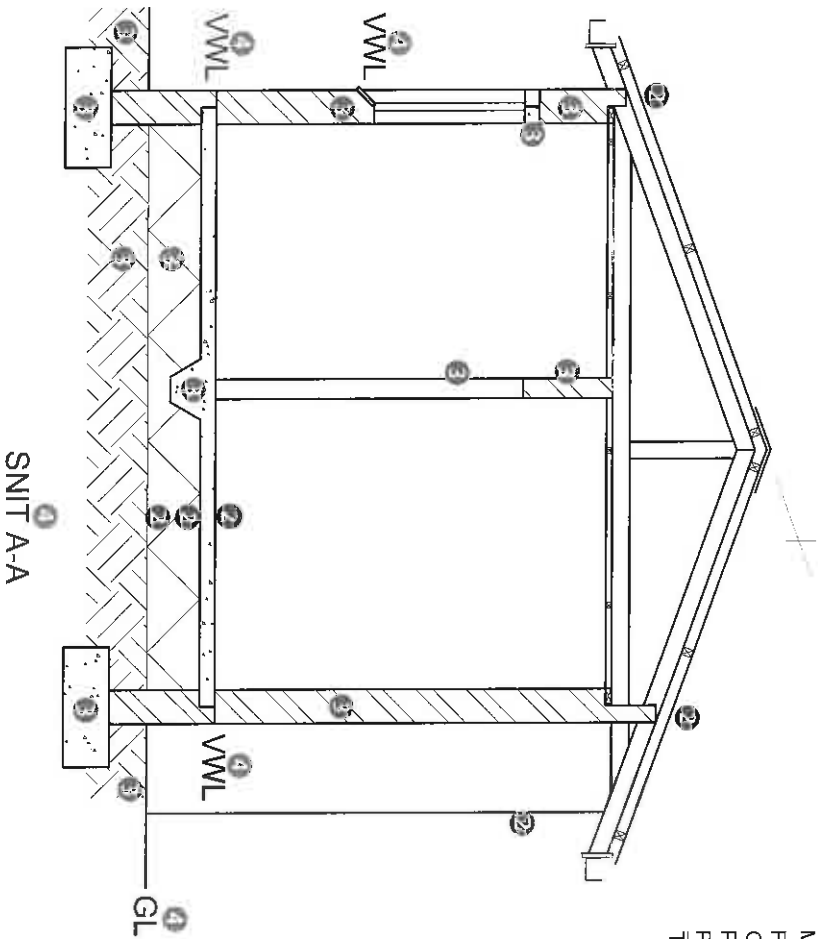
**DAKPUNTTOEKENNING (1)**

KORREKTE DAK HELLING	1
DAKPLAAT	1
DAKNOK	1 1/2
DAKLATTE	2
DAKKAP (7 x 1/2)	3 1/2
MUURPLAAT (2 x 1/2)	1
FASSIEPLANK (2 x 1/2)	1
GEUT	2
PLAFONLATTE	2
PLAFONBORD	1
<b>TOTAAL</b>	<b>15</b>

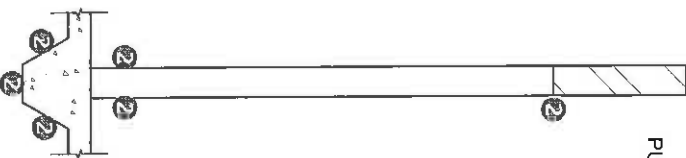


BESONDERHEDE VAN  
PUNTTOEKENNING VIR FONDRASIE  
BEIDE DRAMURE  
(9 x 1/2) x 2 = 9

*[Handwritten signatures]*



BESONDERHEDE VAN  
PUNTTOEKENNING VIR DIE  
VOET EN BINNEMUUR



ASSESSERINGS-KRITERIA		DEURSNEE-AANSIG
A-A		
1	DAK + FASSIE-PLANK + GEUT + RWAP	15
2	MURE + VLOER + FONDRASIE	18
3	ARSERING	6 1/2
4	BYSKRIJTE	2 1/2
<b>SUBTOTALE</b>		<b>42</b>

**DEPARTMENT OF BASIC EDUCATION**

**2014 -11- 13**

PRIVATE BAG X 110  
PRETORIA 0001

**PUBLIC EXAMINATIONS**

VRAESTEL 1 VRAAG 4  
GRAAD 12  
NOVEMBER 2014  
MEMORANDUM



education

Department:  
Education  
REPUBLIC OF SOUTH AFRICA

**November 2014 NSC Marking Guideline Discussion Meeting  
ENGINEERING GRAPHICS & DESIGN: PAPER 1**

10 November 2014 from 08:30 to 16:00 at 222 Struben Street, Pretoria

**CHANGES TO PRESENTED MEMORANDUMS:**

**PAPER 1:**

**NOTE:**

- As **accuracy** is a fundamental and essential component of EGD drawings, a **deviation of only 1 mm is permissible on the accuracy of ALL aspects of ALL drawings**
- **'Masks' and/or drawing instruments**, which are essential marking tools, must therefore be used to check **correctness and accuracy** of **'correctly'** drawn answers or aspects of answers
- However, the principles of **'mark with the mistake'** and **'the learner should be given the benefit of the doubt'** must be applied when the **required level of evidence of knowledge has been displayed**
- **Drawing instruments**, e.g. a divider, setsquares etc., must be used to check **correctness and accuracy** when **'marking with the mistake'**

**QUESTION 1:**

**NOTE:** The TOLERANCE RANGE on the allocation of marks is a **1 mark** deviation only.

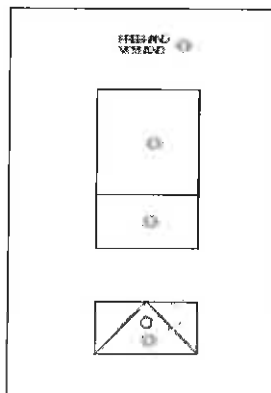
There are **no changes** to the presented memorandum!

However, the following answers will also be acceptable:

2. Half mark for 'DIMENSIONS'/ AFMETINGS and half mark for 'LEVELS'/HOOGTES
6. Must be the full 'CONFERENCE CENTRE' for the mark
9. 'HEIGHT' only is also correct
11. 'BOUNDARY' only is also correct
12. 'SIDE WALK' is also correct
13. 'SECURITY HOUSE/POINT' is also correct
14. 'HARD CORE' only is also correct
16. **1 mark** for '24' and **1 mark** for 'converted to metres'
17. **1 mark** for '75,128' and **1 mark** for 'converted to metres'(rounded off to 75,13 = **1 mark** only)
20. **- 1 mark** if drawn in 'THIRD-ANGLE'

If front view is a **'rectangle'** only, **no marks** for front view

**NOTE:** The following 'SINGLE URINAL' must also be **accepted as correct!**



Any deviation from the symbols = **0 marks**

**MARK ALLOCATION:** FREEHAND =  $\frac{1}{2}$  mark; FRONT VIEW =  $\frac{1}{2}$  mark for top rectangle &  $\frac{1}{2}$  mark for bottom rectangle; TOP VIEW = **1 mark** for rectangle, **1 mark** for triangle &  $\frac{1}{2}$  mark for hole/circle

November 2014 NSC Marking Guideline Discussion Meeting  
**ENGINEERING GRAPHICS & DESIGN: PAPER 1**  
 10 November 2014 from 08:30 to 16:00 at 222 Struben Street, Pretoria

### CHANGES TO PRESENTED MEMORANDUMS:

#### QUESTION 2:

**NOTE:** The TOLERANCE RANGE on the allocation of marks is a 1 mark deviation only.

There are **no changes** to the **drawings** on the memorandum!

There are **no changes** to the **mark allocation** on the memorandum!

#### PENALTIES:

- If **NOT** to 'SCALE 1:1' = - 2 marks
- If **NOT** correctly draw in 'FIRST ANGLE' = - 2 marks
- HATCHING: incorrect type, inconsistent spacing, freehand, no differentiation between the two solids = - ½ mark for each mistake up to a max of - 1 mark

Take note of the following:

- If **shape** of the 'PENTAGON' is **not correct** = no mark for 'PENTAGON CONSTRUCTION' in the top view
- If the 'PYRAMID' is **NOT** a 'PENTAGON', **NO marks** are to be allocated either for the 'PYRAMID' or the 'SECTIONING' thereof **in any of the views**. The concept of '**marking with the mistake**' will therefore **not be applied** to any other polygon.
- The 'CUTTING PLANE' can also be drawn as a 'CHAIN LINE'
- If the 'HIDDEN DETAIL LINES' do **NOT** go through the cut surfaces/hatching, the **marks must still be allocated** for the 'HIDDEN DETAIL LINES' on the non-cut surfaces/hatching areas that are visible.

#### QUESTION 3:

**NOTE:** The TOLERANCE RANGE on the allocation of marks is a 1 mark deviation only.

There are **no changes** to the **drawings** on the memorandum!

There are **no changes** to the **mark allocation** on the memorandum!

#### PENALTIES:

Take note of the following:

- Ensure that the memorandum has been printed the correct size
- If vanishing points are determined incorrectly, **lose** the **2 marks (4 x ½)**, i.e. the TWO vertical lines and the TWO positions of the VPs, and then **mark with the mistake**
- The **points of the curve** (semi circle) **must be checked** before the marks can be allocated

#### QUESTION 4:

**NOTE:** The TOLERANCE RANGE on the allocation of marks is a 2 mark deviation only.

There are **no changes** to the **drawings** on the memorandum!

The **following change** has to be made to the **mark allocation** on the memorandum:

- THE SECTIONAL ELEVATION: One of the ½ marks allocated to the 'LINTEL' above the window **must be removed/not allocated**

#### PENALTIES:

- If **NOT** to 'SCALE 1:50' = - 2 marks
- If **NOT** correctly drawn in 'FIRST ANGLE', i.e. incorrect alignment and/or placing = - 2 marks
- View **ROTATED** = - 2 marks
- GRAPHIC SYMBOLS drawn in **FREEHAND** = - 1 mark



November 2014 NSC Marking Guideline Discussion Meeting  
**ENGINEERING GRAPHICS & DESIGN: PAPER 1**  
10 November 2014 from 08:30 to 16:00 at 222 Struben Street, Pretoria  
**CHANGES TO PRESENTED MEMORANDUMS:**

*Continuation of CHANGES to PAPER 1 QUESTION 4:*

FLOOR PLAN:

- Window not placed correctly = - ½ mark per window(width)
- Door can be a SINGLE LINE
- DOOR SWING/ARC done in FREEHAND = **no marks(s)** for the SWING/ARC
- HATCHING to be SANS compliant
- FREEHAND HATCHING = - 1 mark

NORTH ELEVATION

- See notes under 'PENALTIES'
- An 'AUXILIARY' view is required to determine the HEIGHT of the ROOF
- Window frame may be single lines

SECTIONAL ELEVATION

- Incorrect placement of WINDOW = - 1 mark
- Incorrect placement of WALL = - 1 mark
- WALLS and FOUNDATION incorrect = mark one side as correct and the other side as incorrect
- Incorrect thickness of ROOF TRUSS = - 1 mark
- Incorrect HARDCORE HEIGHT = - 1 mark
- 'GL' and 'NGL' accepted as correct (*GV' en 'NGV' aanvaarbaar as korrek*)
- Incorrect cutting plane used = - 2 marks
- Sectional elevation as a label is also acceptable (deursnee-aansig)



Sarel de Bruin  
INTERNAL MODERATOR



Kenny Clayton  
INTERNAL MODERATOR



Jacques van Leeuwen  
CHIEF EXAMINER



Achmat Bagus  
EXTERNAL MODERATOR



Merven P. Moodley  
EXTERNAL MODERATOR

