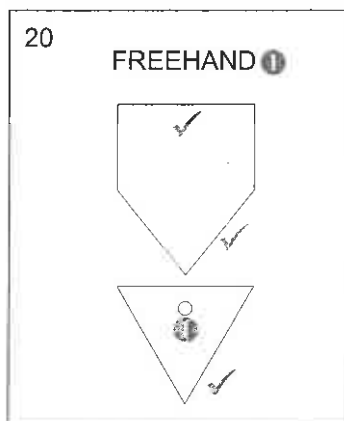


ANSWERS		
1	2014-08-05	1
2	VERIFY DIMENSIONS AND LEVELS	1
3	1 : 500	1
4	CHANGE ROAD	1
5	TAR	1
6	CONFERENCE CENTRE	1
7	YELLOW	1
8	BLUE	1
9	HEIGHT ABOVE SEA LEVEL/CORNER HEIGHT	1
10	MAN HOLE	1
11	BOUNDARY LINE	1
12	PAVEMENT	1
13	CONTROL POINT/GUARD HOUSE	1
14	COMPACTED HARD CORE	1
15	RIDGE ROAD	2
16	24	2
17	75,128	2
18	129,6 [calculation 1, answer 1, converted to metres 1]	3
19	865,67 m ² [calculation 1, answer 1, metres ² 1]	3
20	(See below)	4

TOTAL: 30



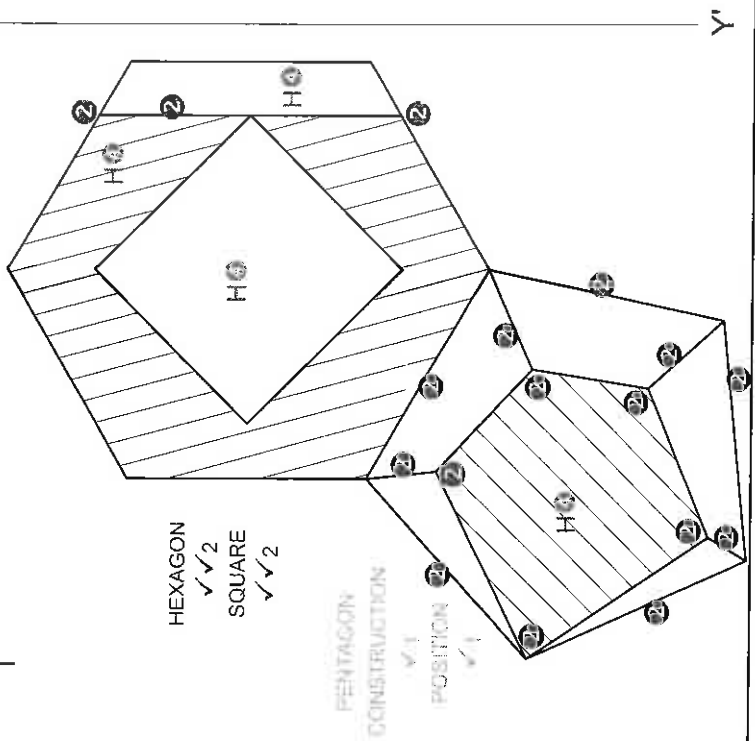
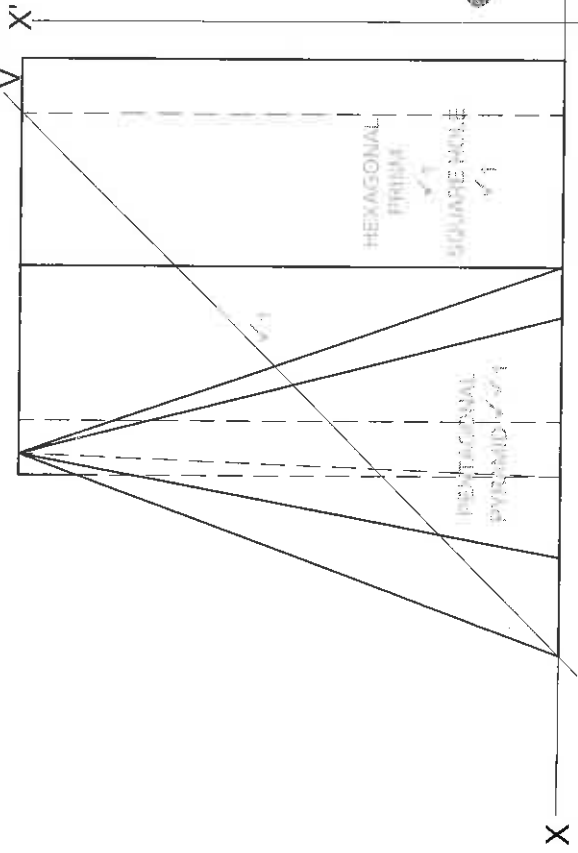
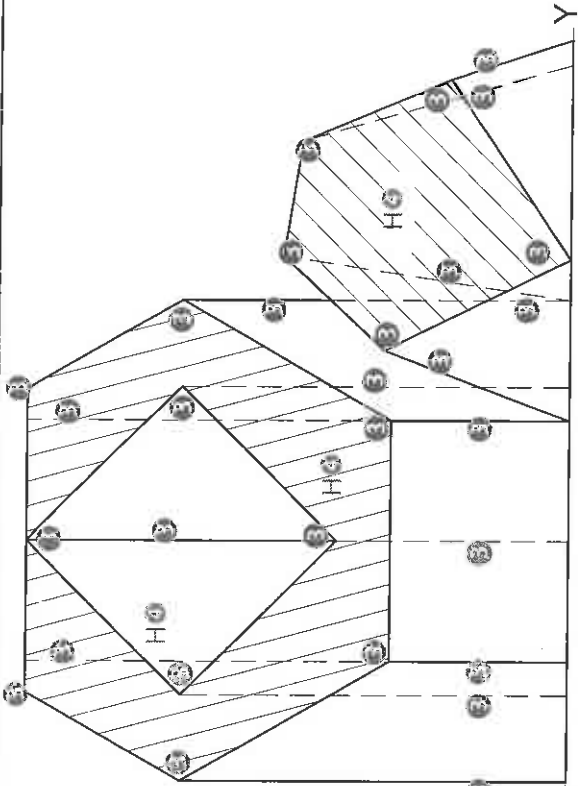
**DEPARTMENT OF BASIC
EDUCATION**

2014 -11- 13

PRIVATE BAG X 110
PRETORIA 0001

PUBLIC EXAMINATIONS

PAPER 1 QUESTION 1
GRADE 12
NOVEMBER 2012
MEMORANDUM



[Handwritten signatures and initials]

DEPARTMENT OF BASIC EDUCATION
 2014 -11- 13
 PRIVATE BAG X 110
 PRETORIA 0001
 PUBLIC EXAMINATIONS

ASSESSMENT CRITERIA		7	12½	15	3½	38
1	CONST. + FRONT VIEW					
2	SECTIONAL TOP VIEW					
3	SECTIONAL LEFT VIEW					
4	HATCHING					
TOTAL						38

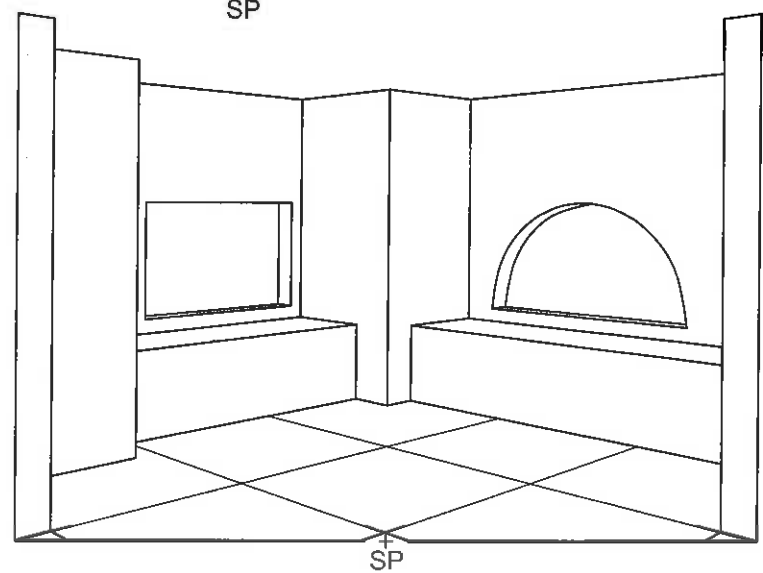
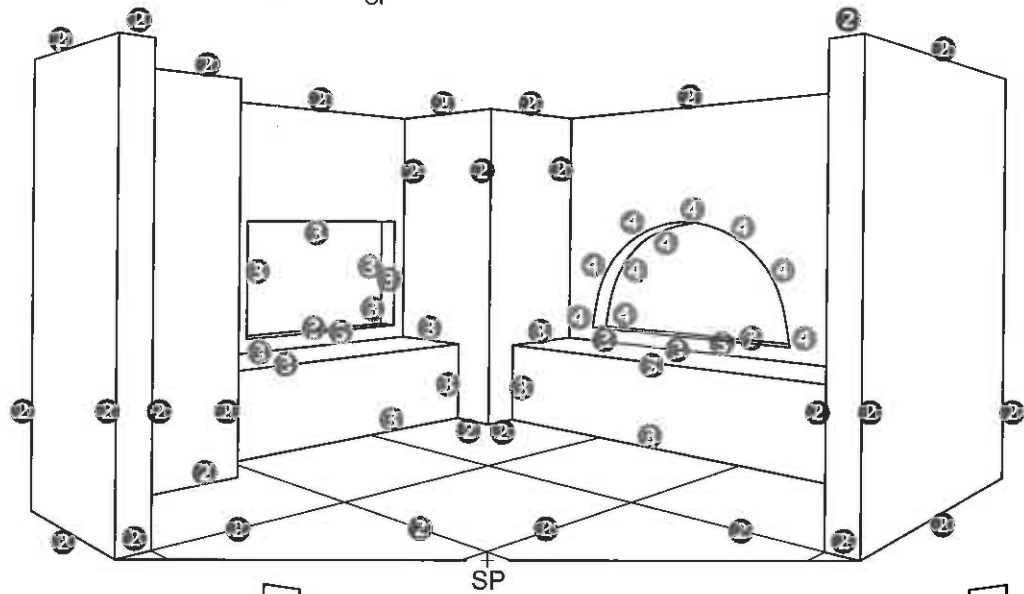
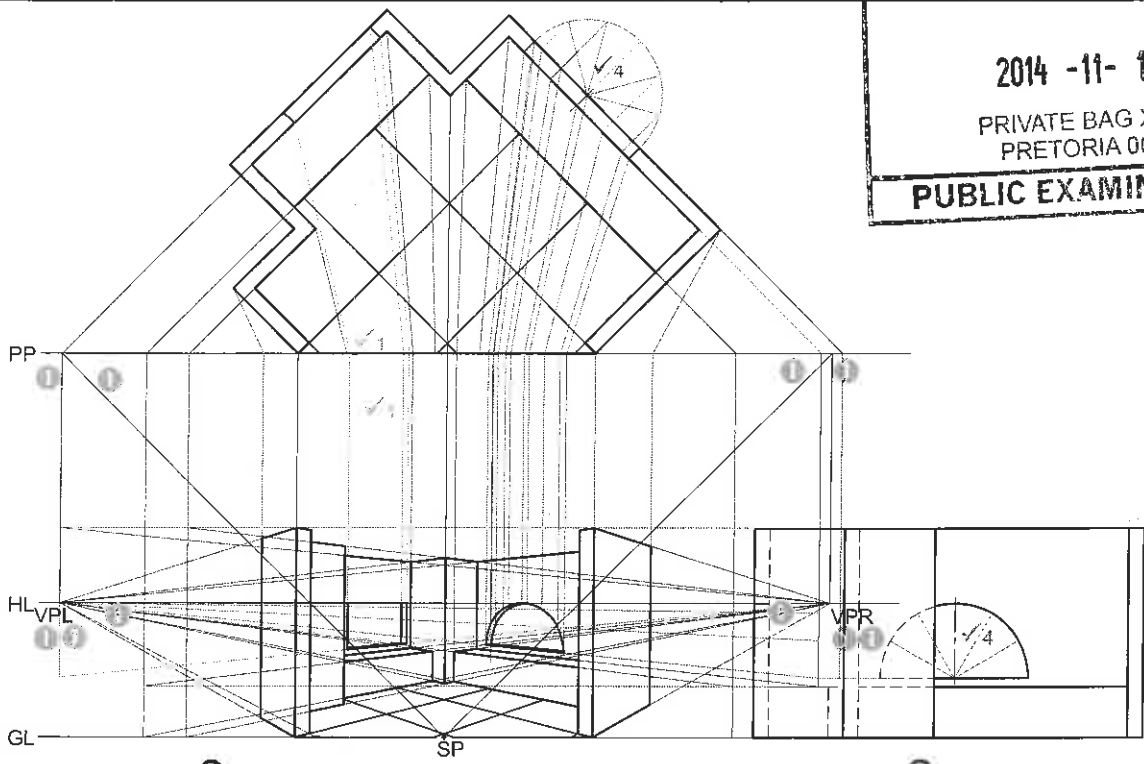
PAPER 1 QUESTION 2
 GRADE 12
 NOVEMBER 2014
 MEMORANDUM

DEPARTMENT OF BASIC EDUCATION
DBE/November 2014

2014 -11- 13

PRIVATE BAG X 110
 PRETORIA 0001

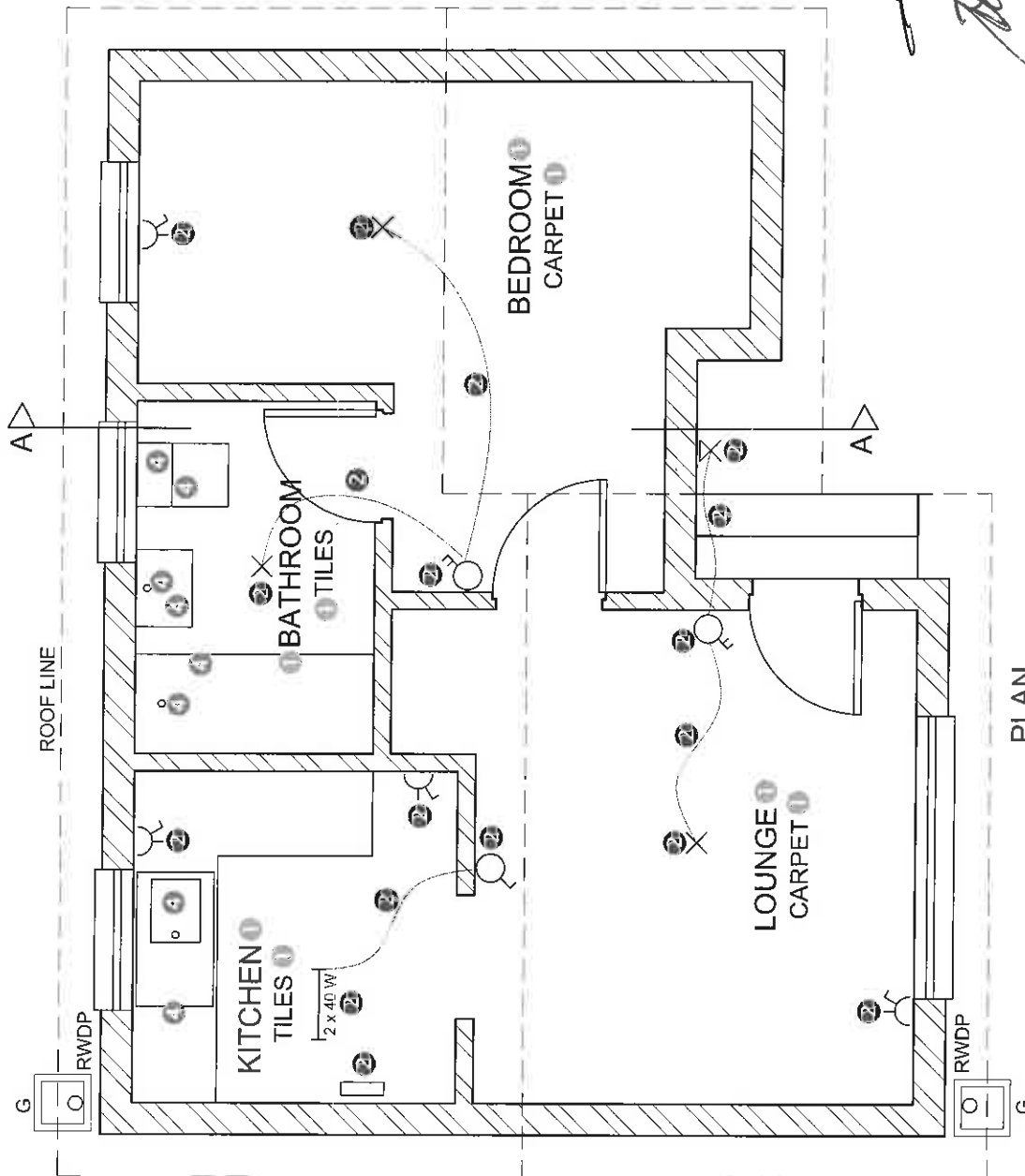
PUBLIC EXAMINATIONS



Handwritten signatures and initials.

ASSESSMENT CRITERIA		
1	CONSTRUCTION + VPs	7
2	WALLS + TILES	15
3	OPENINGS + SEATING	10
4	SEMI-CIRCLE	7
TOTAL		39

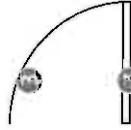
PAPER 1 QUESTION 3
 GRADE 12
 NOVEMBER 2014
 MEMORANDUM



DETAIL OF MARK ALLOCATION FOR A WINDOW (2 x 4 windows = 8)



DETAIL OF MARK ALLOCATION FOR A DOOR (1 x 3 doors = 3)



4 HATCHING ALLOCATION
 SANS COMPLIANT (TYPE) 2
 HATCHING CORRECTLY APPLIED 2
 TOTAL 4

ASSESSMENT CRITERIA	
PLAN	
1	LABELS 4
2	ELECTRICAL 9
3	DOORS + WINDOWS 11
4	FIXTURES 4
5	HATCHING 4
SUBTOTAL 32	

Handwritten signatures and initials.

PLAN
 SCALE 1 : 50

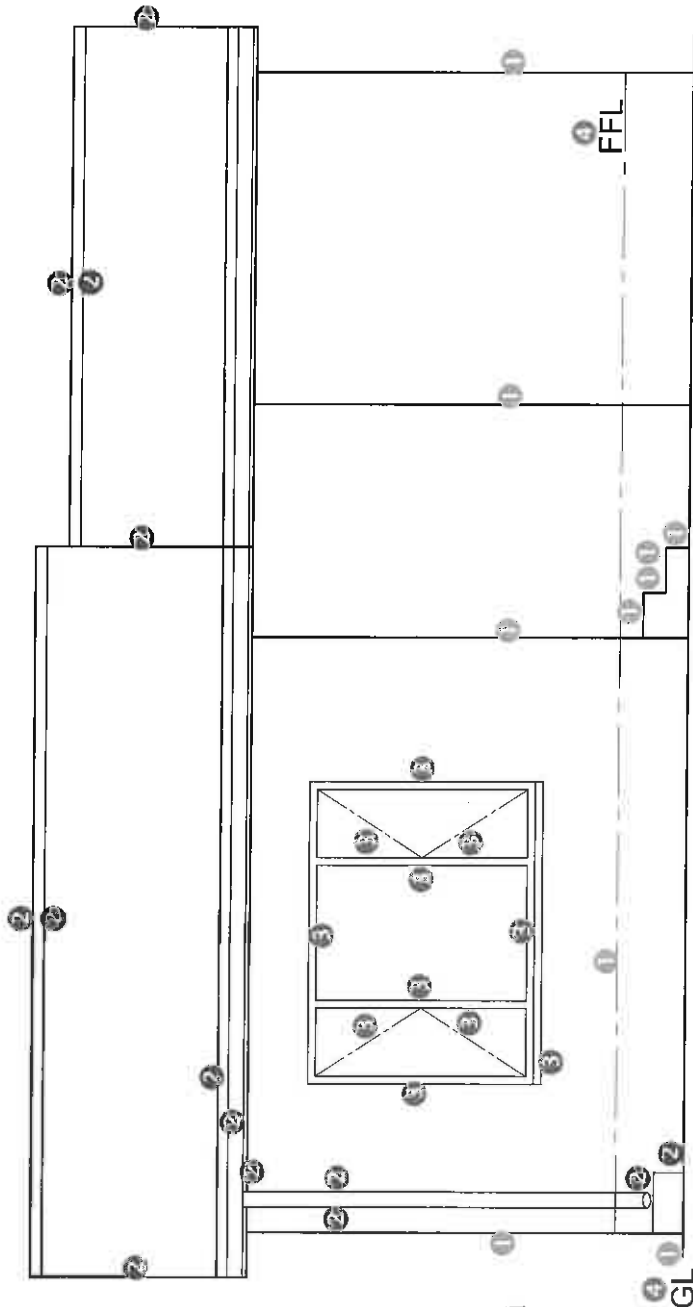
DEPARTMENT OF BASIC EDUCATION

2014 -11- 13

PRIVATE BAG X 110
 PRETORIA 0001

PUBLIC EXAMINATIONS

PAPER 1 QUESTION 4
 GRADE 12
 NOVEMBER 2014
 MEMORANDUM



NORTH ELEVATION

ASSESSMENT CRITERIA		
NORTH ELEVATION		
1	WALLS + FFL	5
2	ROOF + FACIA BOARD + GUTTER + RW/DP	7
3	WINDOW	5½
4	LABELS	1½
SUBTOTAL		19

[Handwritten signatures and scribbles]

DEPARTMENT OF BASIC EDUCATION

2014 -11- 13

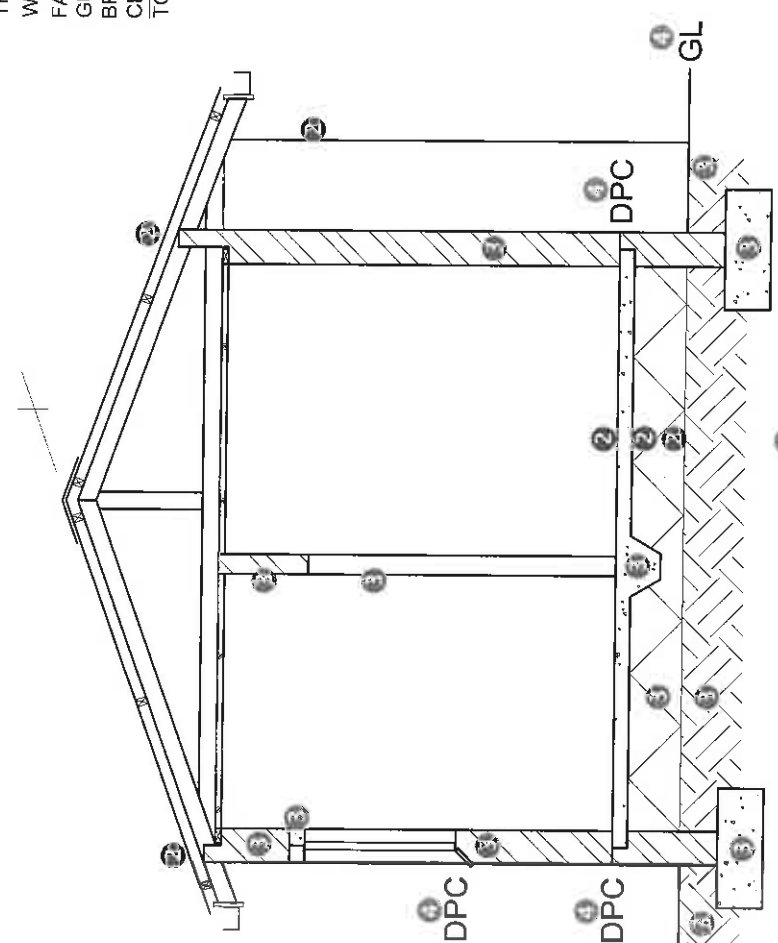
PRIVATE BAG X 110
PRETORIA 0001

PUBLIC EXAMINATIONS

PAPER 1 QUESTION 4
GRADE 12
NOVEMBER 2014
MEMORANDUM

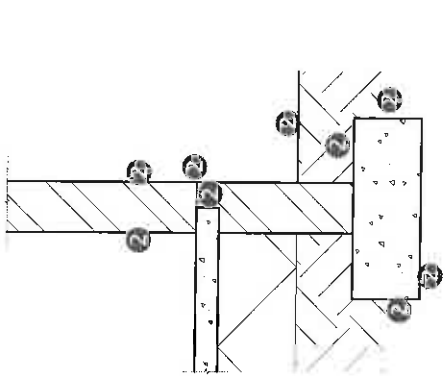
ROOF MARK ALLOCATION (1)

CORRECT ANGLE	1
ROOF SHEET	1
ROOF CAP	1/2
PURLINS	2
TRUSS (7 x 1/2)	3 1/2
WALL PLATE (2 x 1/2)	1
FASCIA BOARD (2 x 1/2)	1
GUTTER	2
BRANDERING	2
CEILING BOARD	1
TOTAL	15



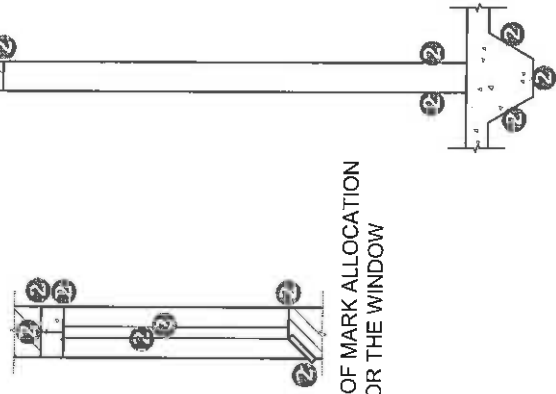
SECTION A-A

DETAIL OF THE MARK ALLOCATION FOR BOTH LOAD-BEARING WALLS (9 x 1/2) x 2 = 9



Handwritten signatures and initials.

DETAIL OF MARK ALLOCATION FOR THE WINDOW



DETAIL OF THE MARK ALLOCATION FOR INTERNAL WALL AND FOOTING



ASSESSMENT CRITERIA		SECTIONAL ELEVATION A-A	MARKS
1	ROOF + FACIA BOARD + GUTTER + RWDF		
2	WALLS + FLOOR + FOUNDATION	18	
3	HATCHING	6 1/2	
4	LABELS	2 1/2	
SUBTOTAL		42	

DEPARTMENT OF BASIC EDUCATION
 2014 -11-13
 PAPER 1 Q4 X 40
 PRETORIA 0001
PUBLIC EXAMINATIONS