



# **basic education**

---

Department:  
Basic Education  
**REPUBLIC OF SOUTH AFRICA**

## **SENIOR CERTIFICATE EXAMINATIONS**

**MATHEMATICAL LITERACY P2**

**ADDENDUM**

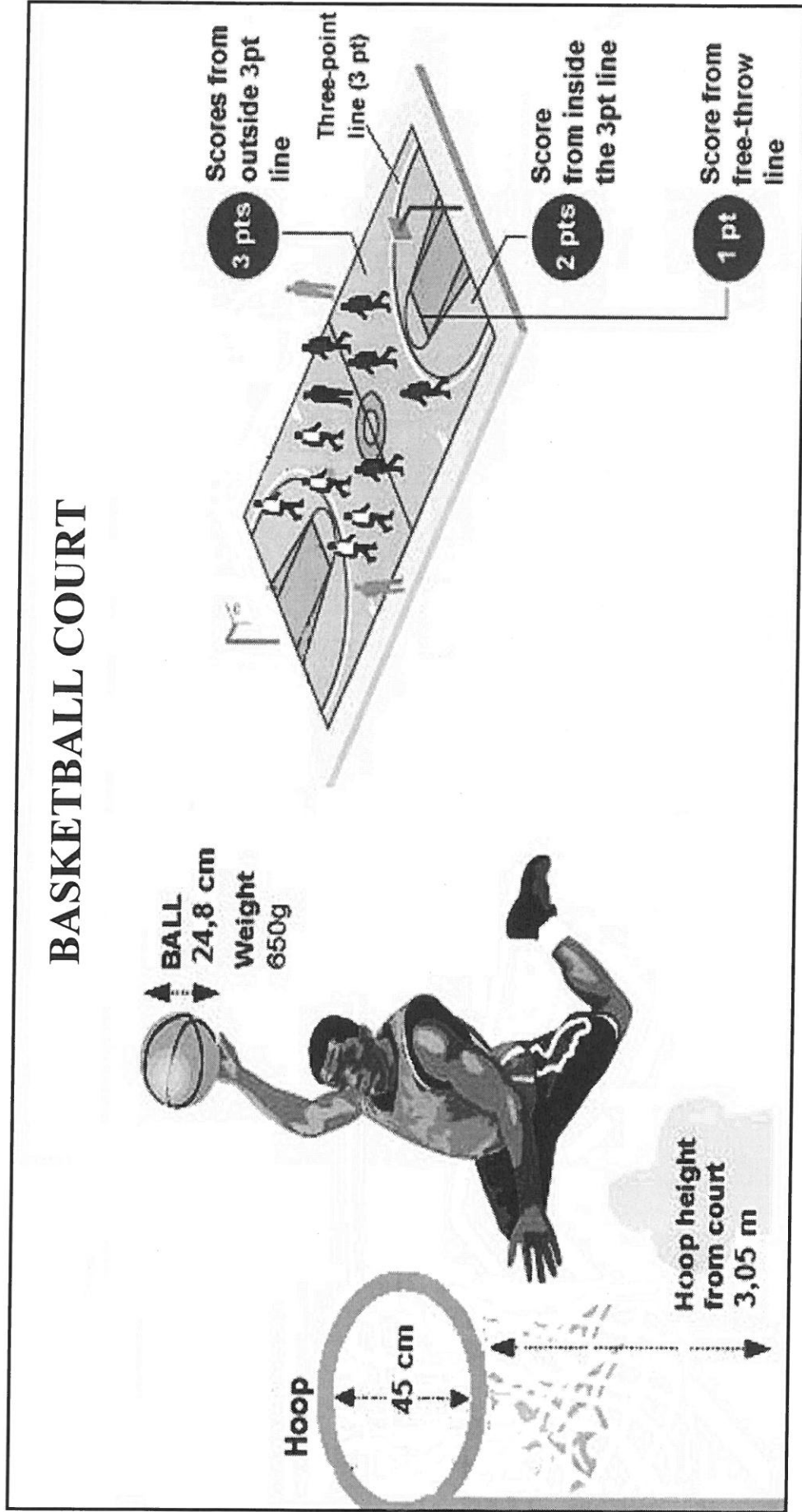
**2017**

**This addendum consists of 5 pages with 4 annexures.**

ANNEXURE A

QUESTION 1.2

PICTURE 1: BASKETBALL COURT, SCORING POSITIONS WITH POINTS AND A PLAYER SCORING

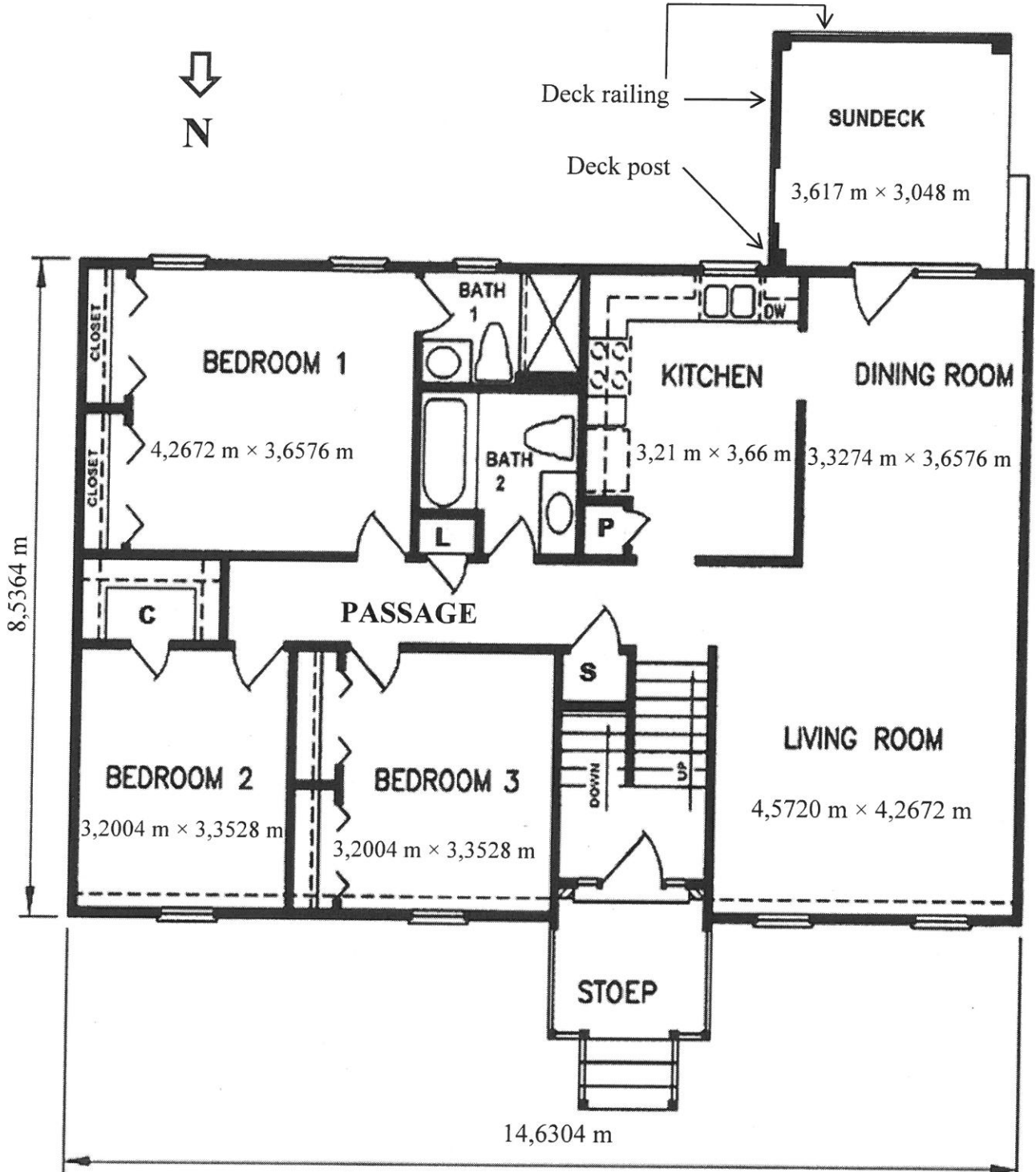


[Source: [http://en.wikipedia.org/wiki/Basketball\\_court](http://en.wikipedia.org/wiki/Basketball_court)]

ANNEXURE B

QUESTION 3.2

PLAN 1: FLOOR PLAN OF FRANCIS' HOUSE



- KEY:**  
C: Closet  
L: Linen  
P: Pantry  
S: Storage

[Source: <http://www.google.com/ur/>]

**NOTE:** A sundeck is a flat wooden structure attached to a house.

## ANNEXURE C

## QUESTION 4.1

TABLE 6: I INDIVIDUAL INCOME TAX RATES 2015/2016

Taxable Income (tax brackets)	Tax on Income
\$0 – \$1 200	Nil
\$18 201 – \$37 000	19c for each \$1 over \$18 200
\$37 001 – \$80 000	\$3 572 plus 32,5c for each \$1 over \$37 000
\$80 001 – \$180 000	\$17 547 plus 37c for each \$1 over \$80 000
\$180 001 and over	\$54 547 plus 45c for each \$1 over \$180 000

**NOTE:** Residents of Australia also pay a medical levy of 2% of their taxable income.

**NOTE:** The rates above do not include the additional 2% of taxable income for the medical levy.

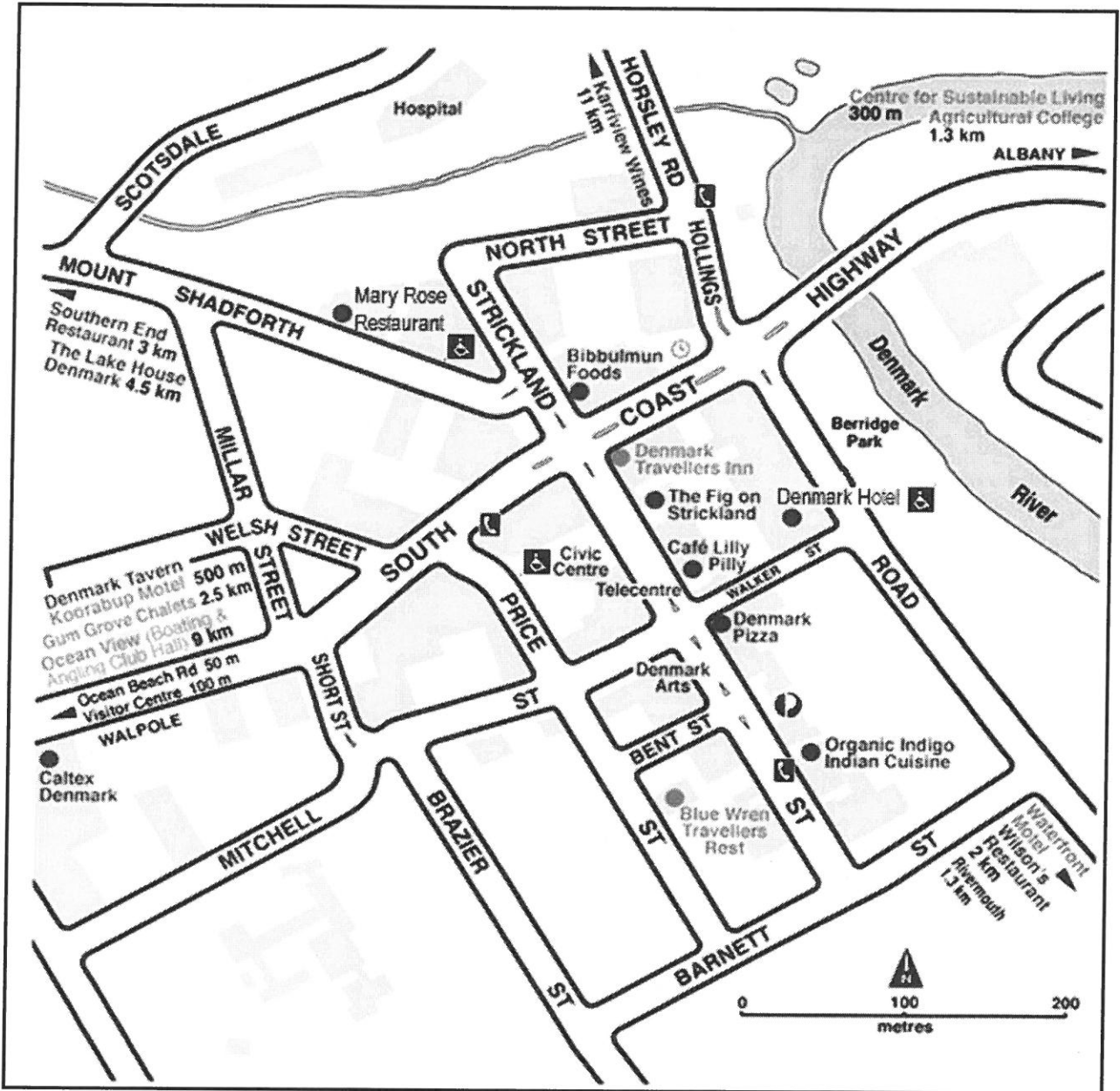
TABLE 7: INDIVIDUAL INCOME TAX RATES 2016/2017

Taxable Income (tax brackets)	Tax on Income
\$0 – \$18 200	Nil
\$18 201 – \$37 000	19c for each \$1 over \$18 200
\$37 001 – \$87 000	\$3 572 plus 32,5c for each \$1 over \$37 000
\$87 001 – \$180 000	\$19 822 plus 37c for each \$1 over \$87 000
\$180 001 and over	\$54 232 plus 45c for each \$1 over \$180 000

[Source: [www.ato.gov.au](http://www.ato.gov.au)]

ANNEXURE D

QUESTION 4.2



[Source: <http://andimaps.com>]