

EKSAMENNOMMER:														
SENTRUMNOMMER:														

SENIORSERTIFIKAAT-EKSAMEN

WISKUNDE V2

GRAAD 12

2015

SPEZIALE ANTWOORDEBOEK

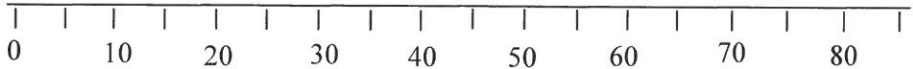
VRAAG	PUNT	VOORL	MOD.	VOORL	MOD.	VOORL
1						
2						
3						
4						
5						
6						
7						
8						
9						
10						
11						
TOTAAL						

Hierdie antwoordeboek bestaan uit 18 bladsye.

VRAAG 1

1.1

3	4	4	5	23	29	32	36	40	47	56	66	68	76	82
---	---	---	---	----	----	----	----	----	----	----	----	----	----	----

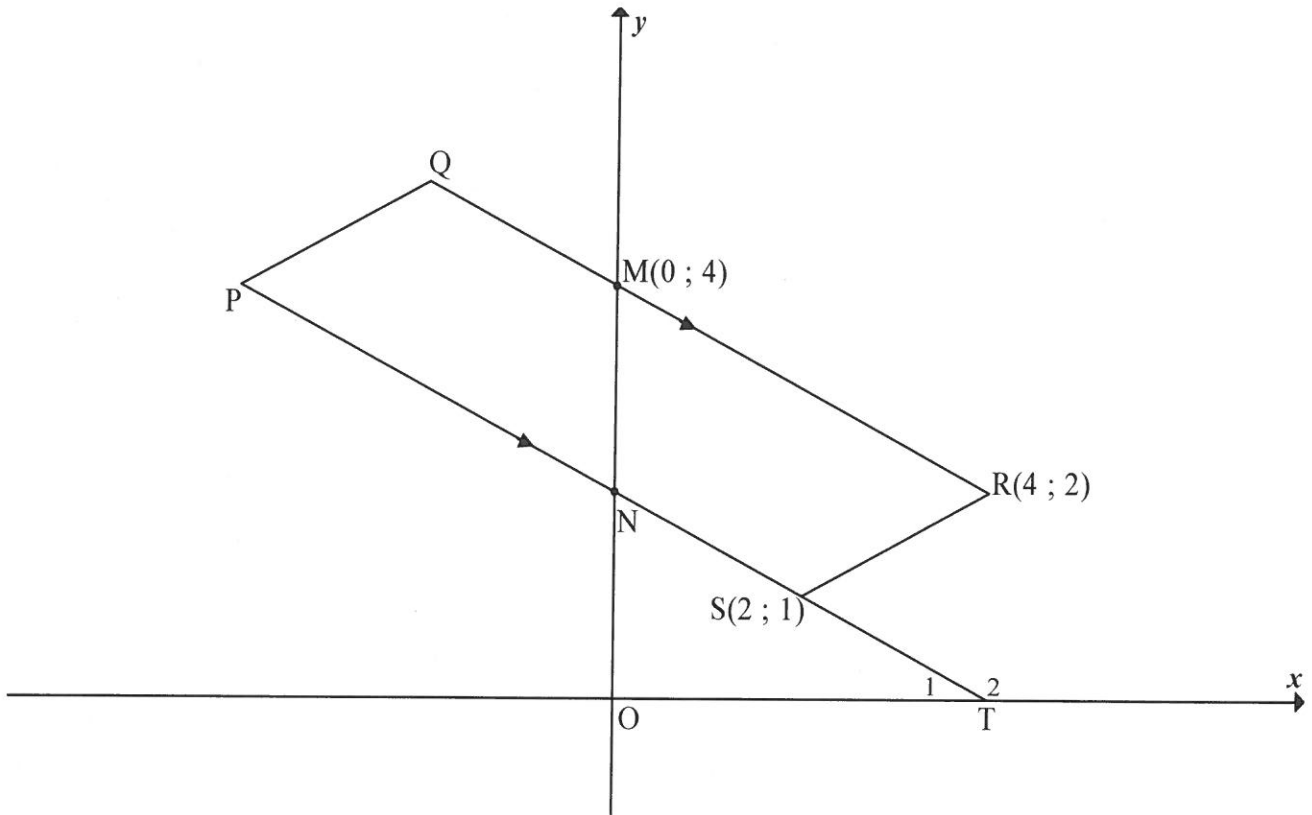
	Oplossing	Punte
1.1.1		(2)
1.1.2		(1)
1.1.3		(3)
1.1.4		(2)
1.2		(3)
1.3		(1)
		[12]

VRAAG 2

Getal Saterdag bygewoon	12	11	10	10	9	9	7	6	5	4	12	11	6
Punt (as 'n %)	96	91	78	83	75	62	70	68	56	34	88	90	59

	Oplossing	Punte
2.1		(3)
2.2		(2)
2.3		(1)
2.4		(2)
		[8]

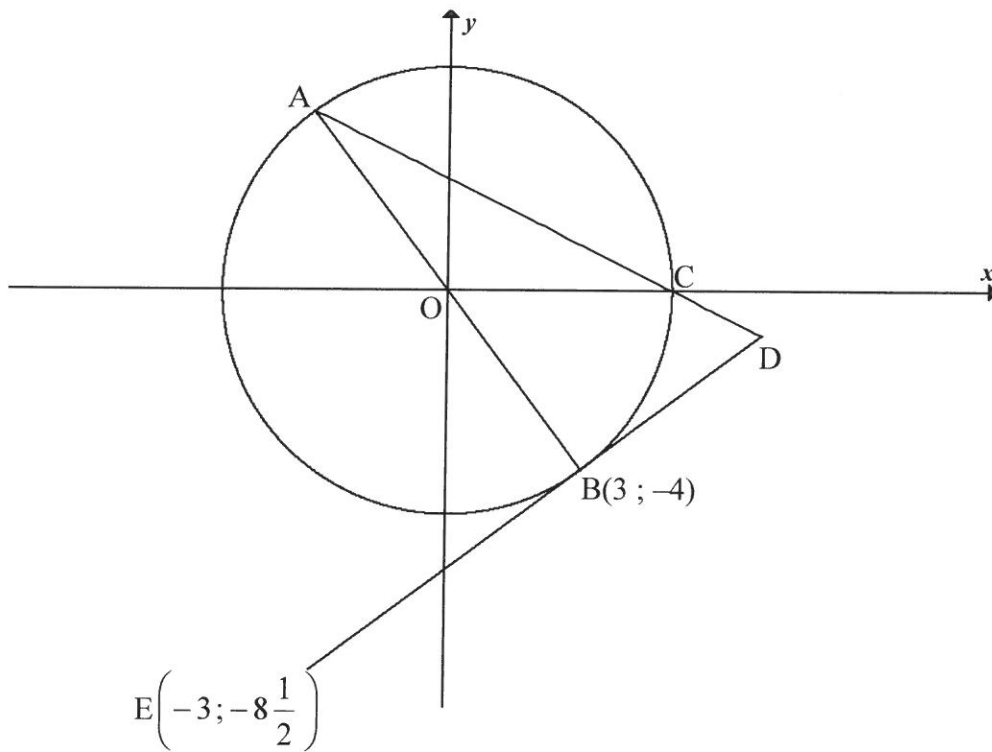
VRAAG 3



	Oplossing	Punte
3.1		(2)
3.2		(4)

	Oplossing	Punte
3.3		(4)
3.4		(1)
3.5		(5)
		[16]

VRAAG 4



	Oplossing	Punte
4.1		(2)
4.2		(3)
4.3		(2)
4.4		(3)

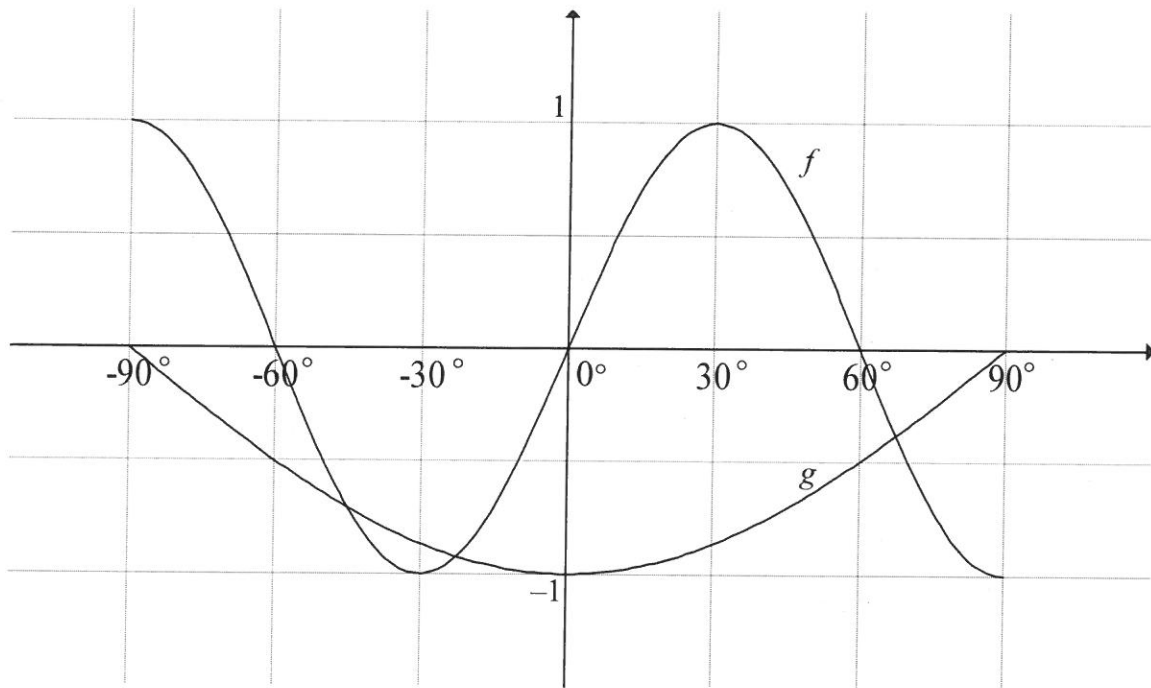
	Oplossing	Punte
4.5		(3)
4.6		(6) [19]

VRAAG 5

	Oplossing	Punte
5.1		(5)
5.2		(6)
5.3.1		(1)
5.3.2		(4)

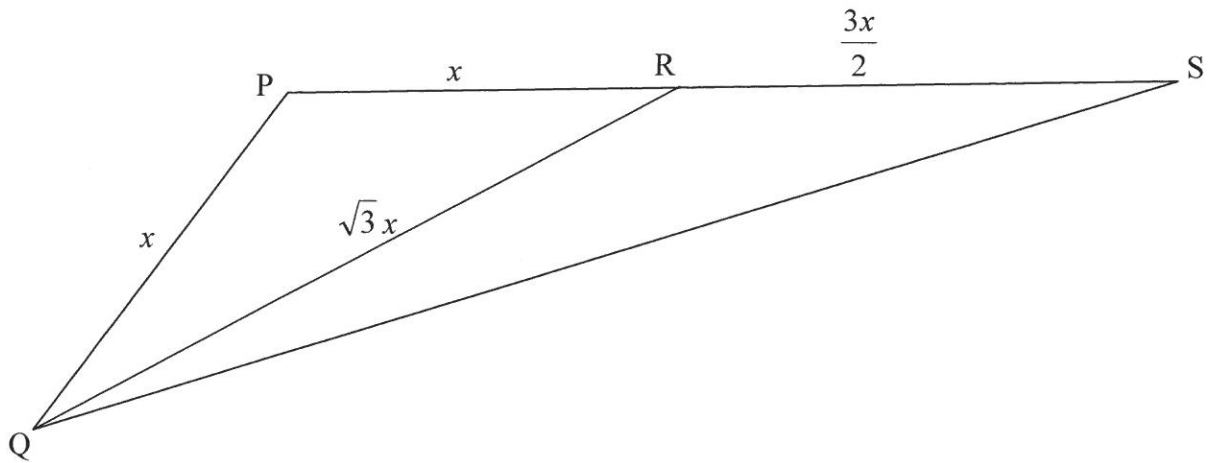
	Oplossing	Punte
5.4.1		(5)
5.4.2		(2)
5.5		(6) [29]

VRAAG 6



	Oplossing	Punte
6.1		(1)
6.2		(1)
6.3		(3)
6.4		(4)
		[9]

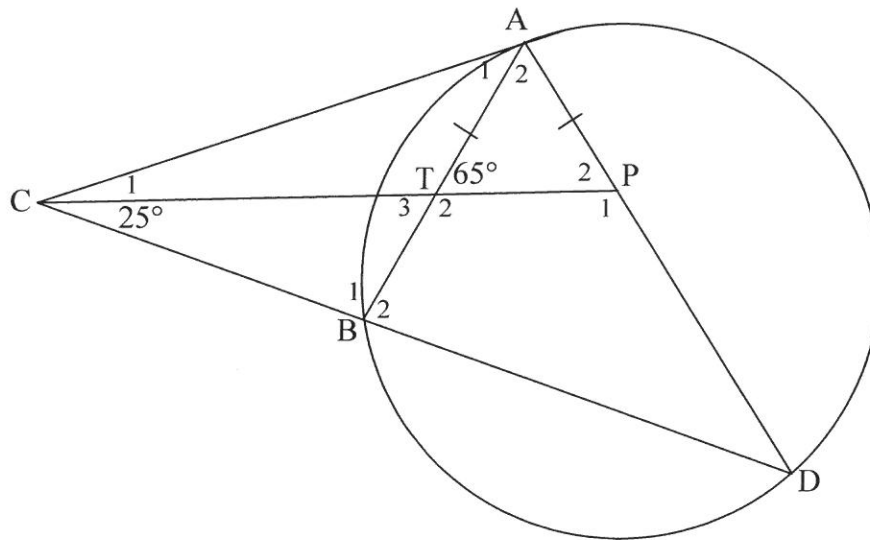
VRAAG 7



	Oplossing	Punte
7.1		(4)
7.2		(5) [9]

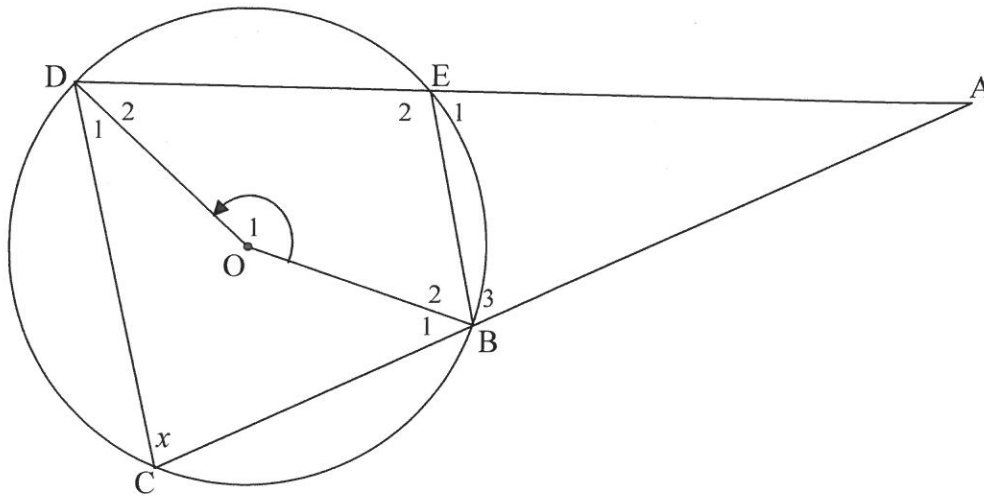
Gee redes vir ALLE bewerings in VRAAG 8, 9, 10 en 11.

VRAAG 8



	Oplossing	Punte
8.1.1		(2)
8.1.2		(2)
8.1.3		(2)
8.2		(2)
		[8]

VRAAG 9



9.1 Voltooi die volgende tabel deur 'n rede vir elke bewering neer te skryf.

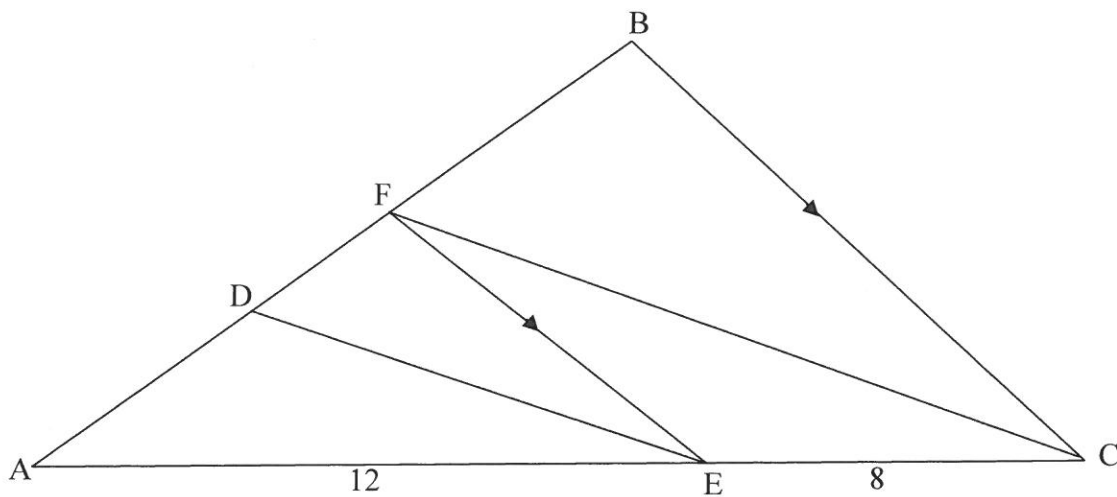
	Bewering	Rede	Punte
9.1.1	$\hat{E}_1 = x$		(1)
9.1.2	$\hat{O}_1 = 2x$		(1)

	Oplossing	Punte
9.2.1		(4)
9.2.2		(3)
		[9]

VRAAG 10

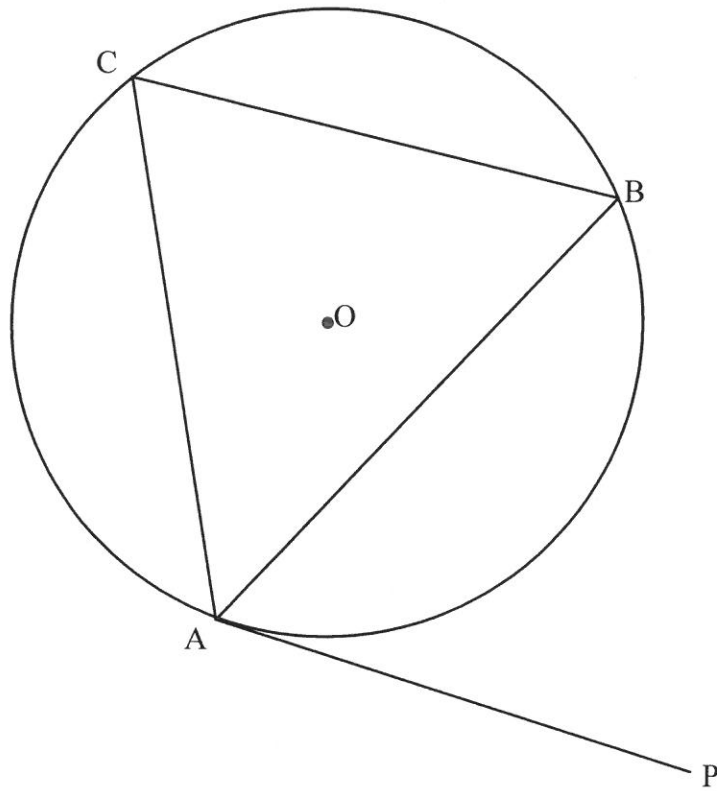
	Oplossing	Punte
10.1	<i>As 'n lyn twee sye van 'n driehoek in dieselfde verhouding verdeel, dan ...</i>	(1)

10.2



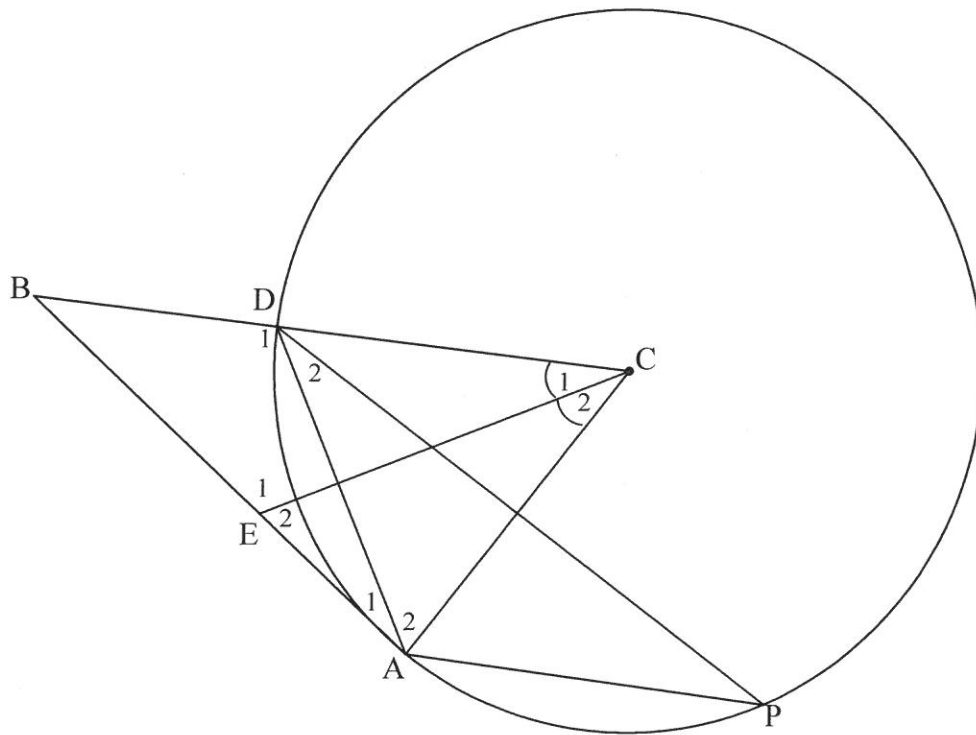
	Oplossing	Punte
10.2.1		(3)
10.2.2		(3)
		[7]

VRAAG 11



	Oplossing	Punte
11.1		(6)

11.2



	Oplossing	Punte
11.2.1		(7)

	Oplossing	Punte
11.2.2(a)		(5)
11.2.2(b)		(3)
11.2.2(c)		(3) [24]

TOTAAL: 150

ADDISIONELE ANTWOORDE

	Oplossing	Punte