



basic education

Department:
Basic Education
REPUBLIC OF SOUTH AFRICA

**NATIONAL
SENIOR CERTIFICATE**

GRADE 12

ENGINEERING GRAPHICS AND DESIGN P1

NOVEMBER 2019

MARKING GUIDELINES

MARKS: 100

These marking guidelines consist of 8 pages.

ANSWERS		
1	CLARK	1
2	1818	1
3	KRYPTON PTY (LTD)	1
4	2018/12/20	1
5	VERIFY ALL DIMENSIONS AND LEVELS	1
6	GRAVEL	1
7	6 m	1
8	2044	1
9	BROWN	1
10	BUILD-IN CUPBOARD	1
11	TO BE REMOVED	1
12	NORTH	1
13	IE	1
14	SHRUBBERY	1
15	SEPTIC TANK and FRENCH DRAIN	2
16	SOUTH WEST	1
17	CLUBHOUSE, DECK, POOL	3
18	<i>See below</i>	3
19		3
20		4
TOTAL		30

ANSWER 18

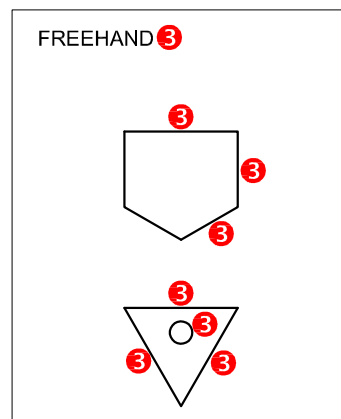
$$\begin{aligned}
 &AB + BC + CD + DE + EF + FG + GA \\
 &= 16.06 + 7.05 + 23.36 + 26.41 + \\
 &18.07 + 53.16 + 47.69 \quad \checkmark \\
 &= 191.80 \text{ m} \quad \checkmark\checkmark
 \end{aligned}$$

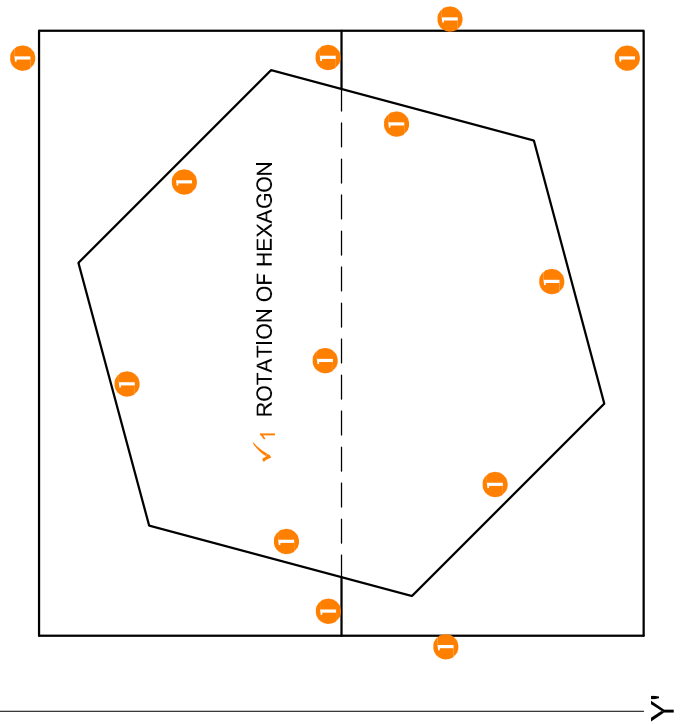
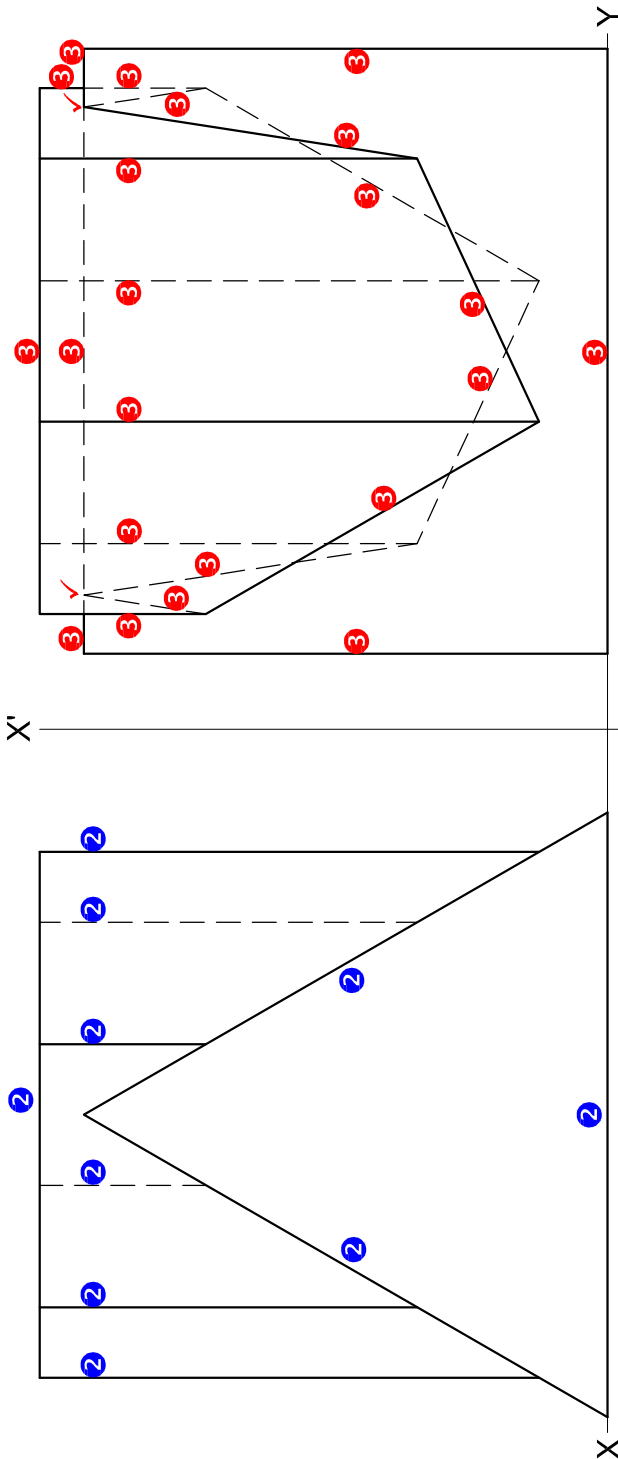
ANSWER 19

$$\begin{aligned}
 \text{AREA} &= (5 \times 6) + (7 \times 4) \quad \checkmark \\
 &= 30 + 28 \\
 &= 58\text{m}^2 \\
 &= 5.3 \times 5.95 \\
 &= 31.54\text{m}^2 \\
 &= 3 \times 5 \\
 &= 15\text{m}^2
 \end{aligned}$$

$$\begin{aligned}
 \text{AREA} &= 58 + 31.54 + 15 \\
 &= 104.54\text{m}^2 \quad \checkmark\checkmark
 \end{aligned}$$

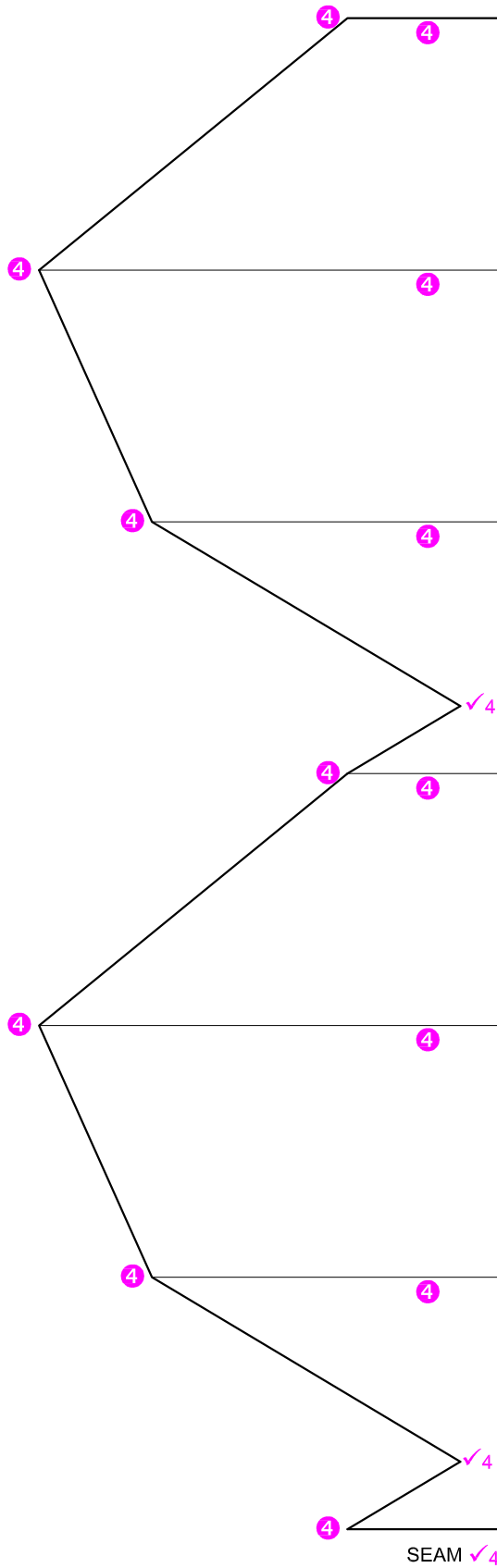
ANSWER 20





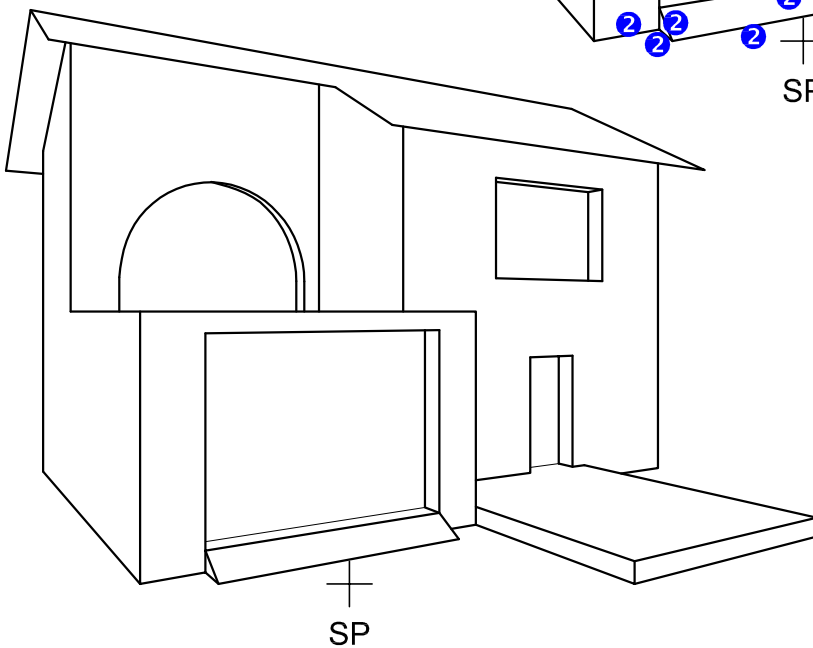
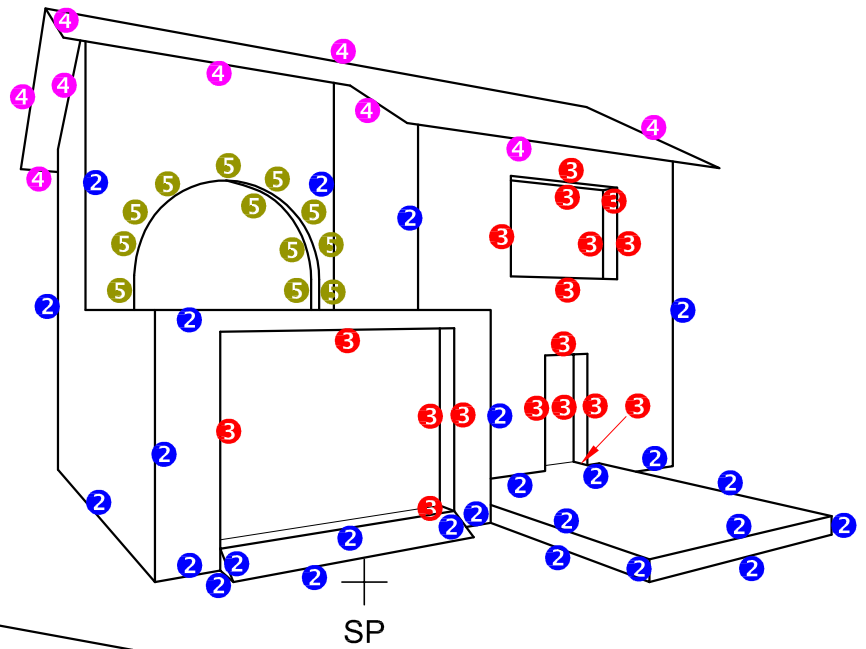
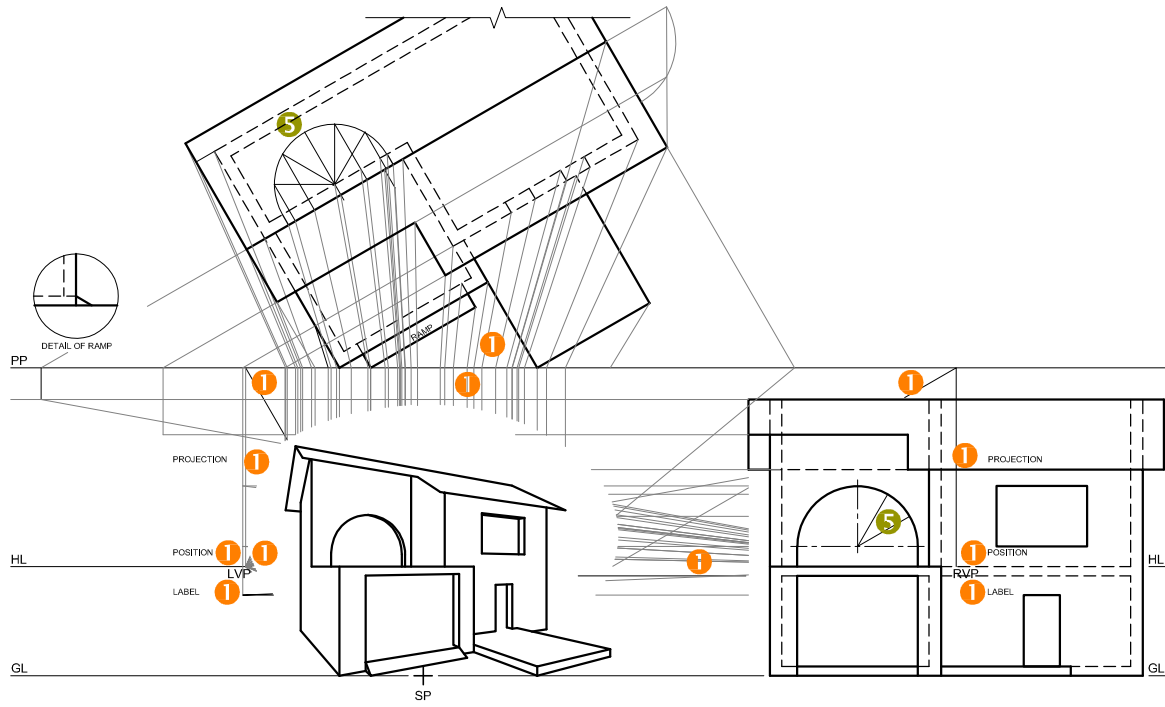
ASSESSMENT CRITERIA	
1	TOP VIEW
2	RIGHT VIEW
3	FRONT VIEW
4	DEVELOPMENT
TOTAL	

PAPER 1 QUESTION 2
 GRADE 12
 NOVEMBER 2019
 MARKING GUIDELINES



✓₄ SIX EQUAL SPACES
✓₄ BASE LINE

PAPER 1 QUESTION 2
GRADE 12
NOVEMBER 2019
MARKING GUIDELINES

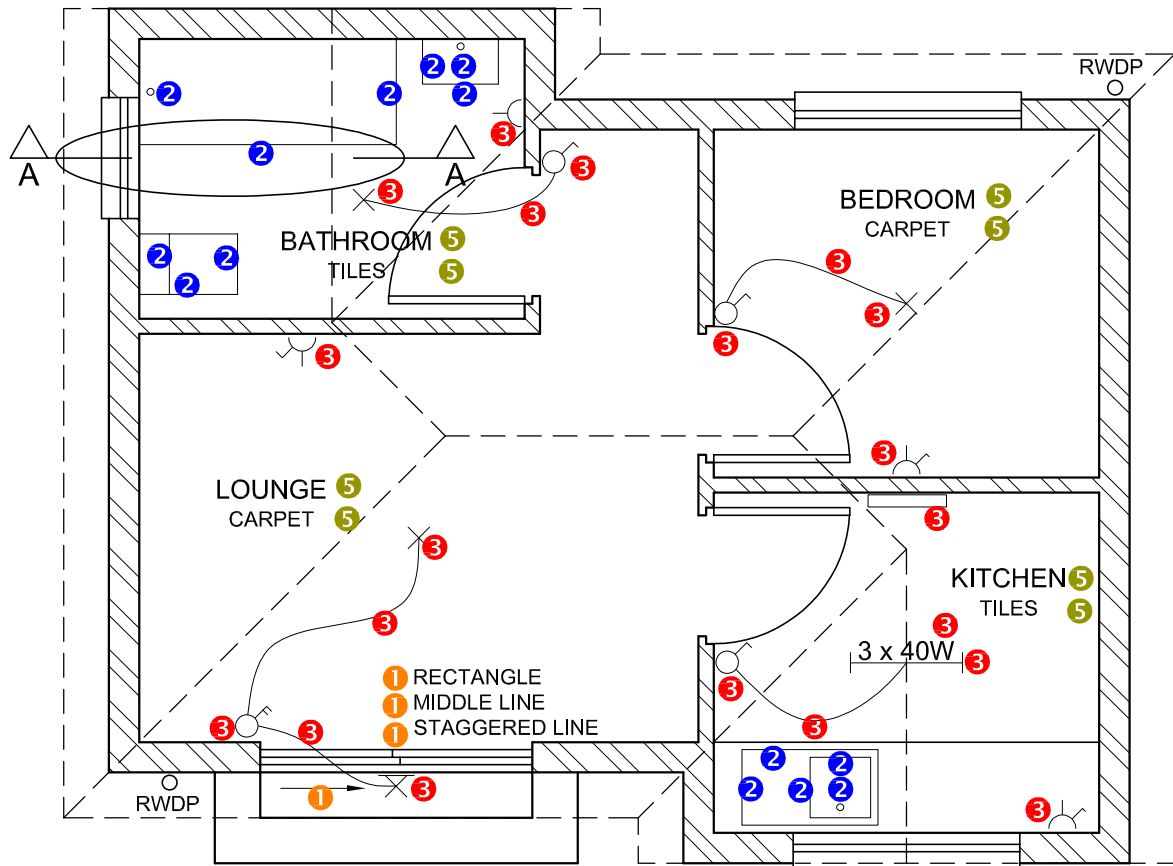


ASSESSMENT CRITERIA		
1	CONSTRUCTION	6
2	WALLS	13
3	DOORS + WINDOWS	8 1/2
4	ROOF	4 1/2
5	ARCS	7
TOTAL		39

PAPER 1 QUESTION 3
 GRADE 12
 NOVEMBER 2019
 MARKING GUIDELINE

FLOOR PLAN		
1	DOORS + WINDOWS	11
2	FIXTURES	7
3	ELECTRICAL	10
4	HATCHING	3
5	LABELS	4
SUBTOTAL		35

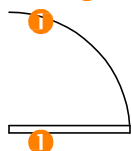
4 HATCHING ALLOCATION
 SANS COMPLIANT (TYPE) 1
 HATCHING CORRECTLY APPLIED 2
 TOTAL 3



FLOOR PLAN
 SCALE 1 : 50



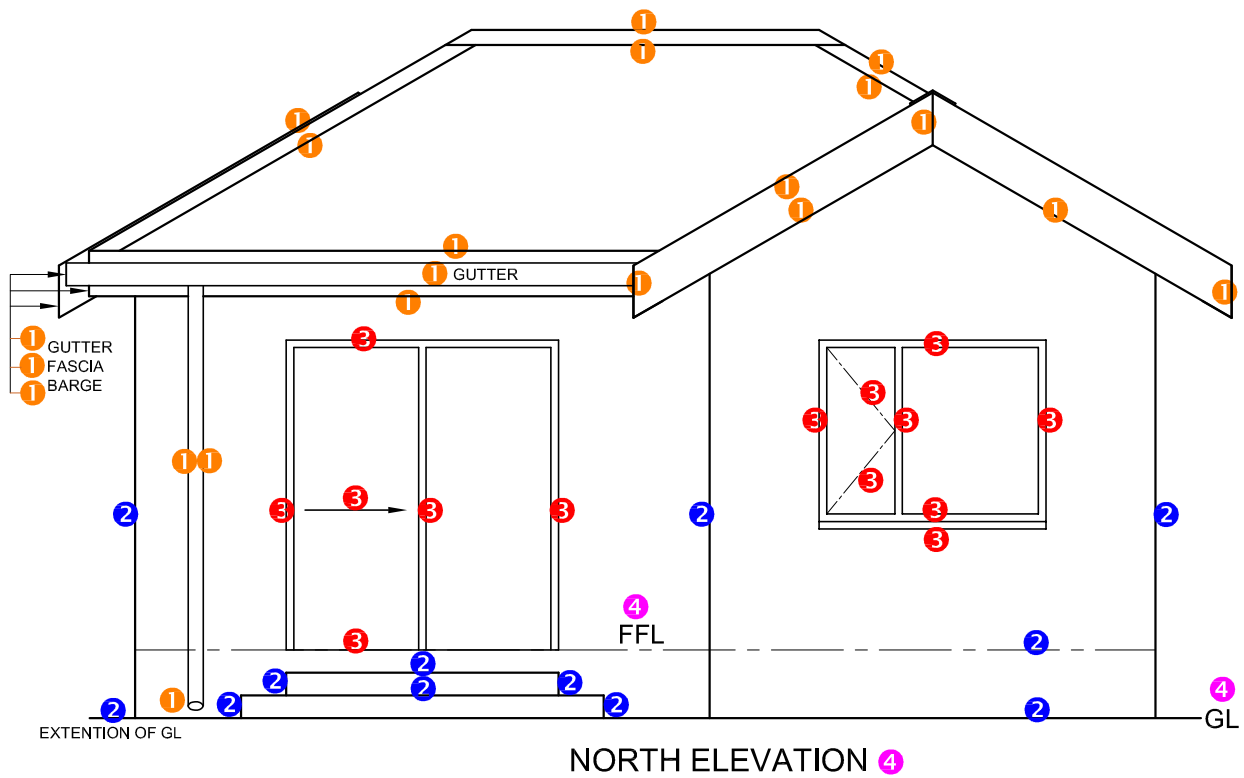
DETAIL OF MARK ALLOCATION FOR A WINDOW (2 x 3 windows = 6)



DETAIL OF MARK ALLOCATION FOR A DOOR (1 x 3 doors = 3)

PAPER 1 QUESTION 4
 GRADE 12
 NSC 2019
 MARKING GUIDELINES

NORTH ELEVATION		
1	ROOF + RWDP	10 $\frac{1}{2}$
2	WALLS + STEP + FFL	6
3	DOOR + WINDOW	7
4	LABELS	1 $\frac{1}{2}$
SUBTOTAL		25

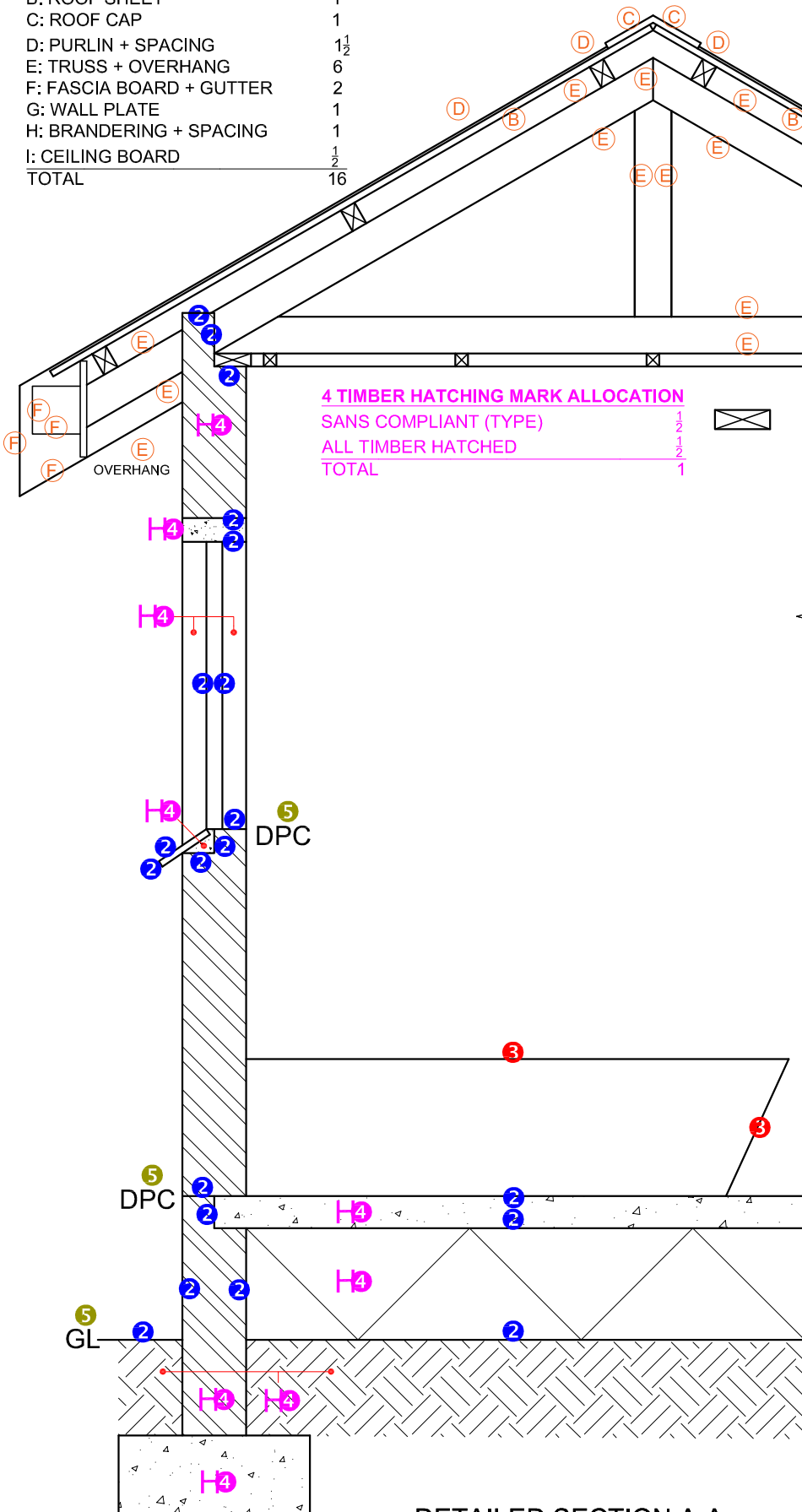


PAPER 1 QUESTION 4
 GRADE 12
 NSC 2019
 MARKING GUIDELINES

1. MARK ALLOCATION FOR ROOF

A: ROOF ANGLE	1 + 1	2
B: ROOF SHEET		1
C: ROOF CAP		1
D: PURLIN + SPACING		1½
E: TRUSS + OVERHANG		6
F: FASCIA BOARD + GUTTER		2
G: WALL PLATE		1
H: BRANDERING + SPACING		1
I: CEILING BOARD		½
TOTAL		16

DETAILED SECTION		
1	ROOF DETAIL	16
2	FOUNDATION + WALL + WINDOW	10
3	BATH	1
4	HATCHING	5½
5	LABELS	1½
SUBTOTAL		34



4 TIMBER HATCHING MARK ALLOCATION
 SANS COMPLIANT (TYPE) 1
 ALL TIMBER HATCHED 2
 TOTAL 3

DETAILED SECTION A-A
SCALE 1 : 20

PAPER 1 QUESTION 4
 GRADE 12
 NSC 2019
 MARKING GUIDELINES