

Published by the Chief Directorate: Surveys and Mapping, Private Bag X10, Mowbray
 Gepubliseer deur die Hoofdirektorat: Opmetings en Kartering, Privaatsak X10, Mowbray
 © State Copyright 2003 Staatsoutersreg
 This map may not be reproduced by any means, including digital, without prior permission.
 Hierdie kaart mag nie deur enige metode herproduseer word, insluitend digitaal, sonder vooraf verkreepte goedkeuring nie.

Printed by the Chief Directorate: Surveys and Mapping.
 Gedruk deur die Hoofdirektorat: Opmetings en Kartering.

CONTOUR INTERVAL 20 METRES KONTOERTUSSENRIJME 20 METER

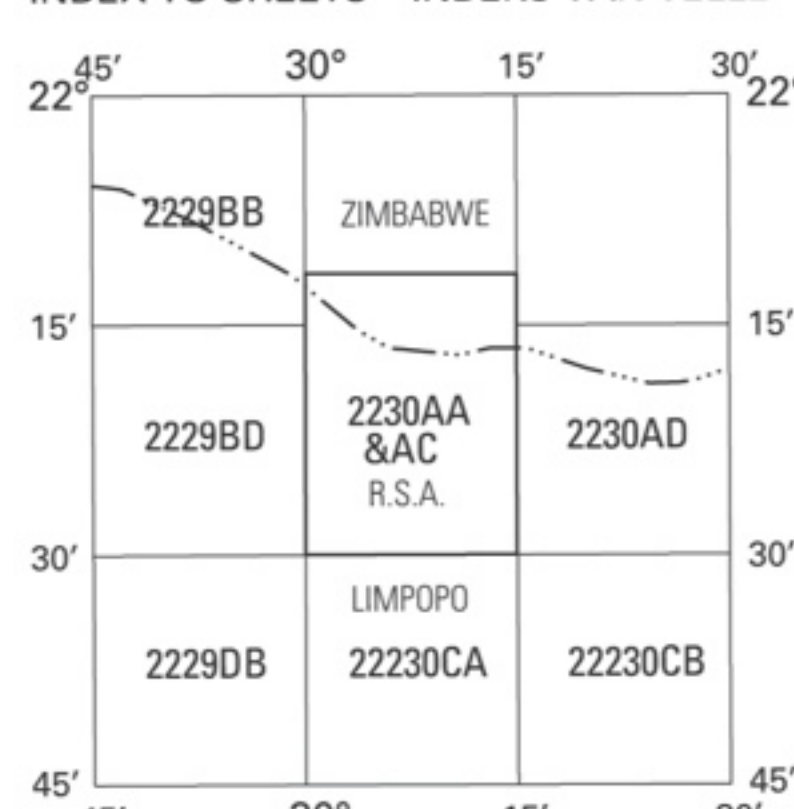
Heights are in metres above mean sea level
 Hoogtes is in meter bo gemiddelde seespieël

Gauss Conform Projection, Central Meridian 29° East.
 Hartebeesthoek 94 Datum (WGS84 Ellipsoid).

Mean magnetic declination 12°57' West of True North (July 2002).
 Mean annual change 7' Westwards (2000-2005).
 Supplied by Hermanus Magnetic Observatory.

Gemiddelde magnetiese deklinasie 12°57' Wes van Ware Noord (Julie 2002).
 Gemiddelde jaarlikse verandering 7' Weswaarts (2000-2005).
 Voorsien deur die Hermanus Magnetiese Observatorium.

INDEX TO SHEETS INDEKS VAN VELLE



REFERENCE

VERKLARING

- National Freeway; National Route.....
- Arterial Road.....
- Main Road.....
- Secondary Road; Bench Mark.....
- Other Road; Bridge.....
- Track and Hiking Trail.....
- Railway; Station or Siding.....
- Other Railway; Tunnel.....
- Embankment; Cutting.....
- Power Line.....
- Built-up Area (High, Low Density).....
- Buildings; Ruin.....
- Post Office; Police Station; Store.....
- Place of Worship; School; Hotel.....
- Fence; Wall.....
- Windpump; Monument.....
- Communication Tower.....
- Mine Dump; Excavation.....
- Trigonometrical Station; Marine Beacon.....
- Lighthouse and Marine Light.....
- Cemetery; Grave.....

- Nasionale Deurpad; Nasionale Roete.....
- Hoofverkeersroete.....
- Hoofpad.....
- Sekondêre Pad; Hoogte merk.....
- Ander Pad; Brug.....
- Downwe Pad en Voetslaanpad.....
- Spoorweg; Stasie of Sylyn.....
- Ander Spoorweg; Tonnel.....
- Opvulling; Deurgrawing.....
- Kraglyn.....
- Beboude Gebied (Hoë, Laë Digtheid).....
- Geboue; Mursie.....
- Poskantoor; Polisie stasie; Winkel.....
- Plek van Aanbidding; Skool; Hotel.....
- Draadheining; Muur.....
- Windpomp; Monument.....
- Kommunikasietoring.....
- Myinhoop; Uitgraving.....
- Peilbaken; Seevaartbaken.....
- Vuurtoring en Seevaartlig.....
- Begraafplaa; Graf.....

Cadastral information supplied by the Surveyor-General
 Oorspronklike Plaa.....

REFERENCE

VERKLARING

- International Boundary and Beacon.....
- Provincial Boundary.....
- Protected Area.....
- Perennial River.....
- Non-perennial River.....
- Non-Perennial Water.....
- Dry Water Course.....
- Dry Pan.....
- Marsh and Vlei.....
- Pipeline (above ground).....
- Water Tower; Reservoir; Water Point.....
- Coastal Rocks.....
- Prominent Rock Outcrop.....
- Woodland.....
- Cultivated Land.....
- Orchard or Vineyard.....
- Recreation Ground.....
- Row of Trees.....
- Internasionale Grens en Baken.....
- Provinsiale Grens.....
- Bewarings Gebied.....
- Standhoudende Rivier.....
- Nie-standhoudende Rivier.....
- Nie-standhoudende Water.....
- Droë Loop.....
- Moeras en Vlei.....
- Pyplyn (bo die grond).....
- Watertoring; Reservoir; Waterpunt.....
- Kuslyntroes.....
- Prominente Klipbank.....
- Erosie; Sand.....
- Beboste Gebied.....
- Bewerkte Land.....
- Boord of Wingerd.....
- Ontspanningsterrein.....
- Rye Bome.....

Kadastrale inligting verstrek deur die Landmeter-generaal
 Oorspronklike Plaa.....

The delimitation of international and provincial boundaries on this map should not be considered as authoritative.
 Die afbakening van internasionale en provinsiale grense op hierdie kaart moet nie as gesaghebbend beskou word nie.



2230 AC 11 MUSINA (SOUTH)

ORTHOPHO MAP SERIES 1 : 10 000 SOUTH AFRICA
 ORTOFOTO KAARTREEKS SUID-AFRIKA

30°03'
 22°21'



Gauss Conform Projection. Central Meridian 31° East
 Contour Interval 5 Metres
 Grid Interval 1 000 Metres
 Hartebeesthoek 94 Datum
 WGS84 Ellipsoid

1 : 10 000

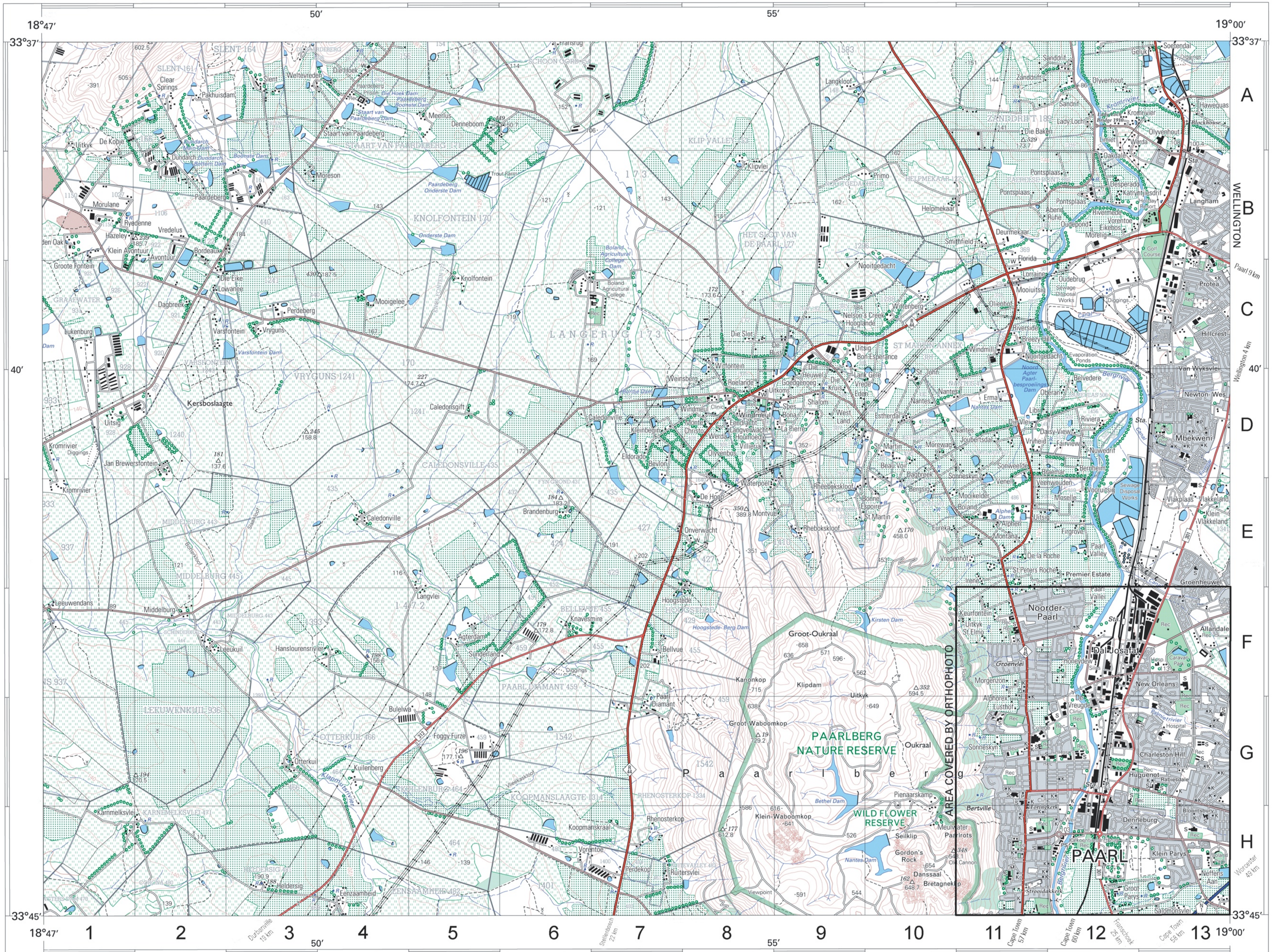
Gauss Konforme Projeksie. Middelmeridiaan 31° Oos
 Kontoertussenruimte 5 Meter
 Ruittussenruimte 1 000 Meter
 Hartebeesthoek 94 Datum
 WGS84 Ellipsoid

2230 AC 11 SECOND EDITION
 TWEDE UITGAWE
 2004

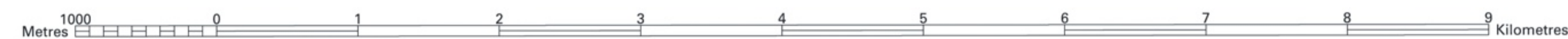
INDEX TO SHEETS INDEX VAN VELLE

2229BD10	2230AC6	2230AC7
2229BD15	2230AC11	2230AC12
2229BD20	2230AC16	2230AC17

30°00'



Published by the Chief Directorate: Surveys and Mapping, Private Bag X10, Mowbray
 Gepubliseer deur die Hoofdirektoraat: Opmetings en Kartering, Privaatsak X10, Mowbray
 © State Copyright 2003 Staatsouteursreg
 This map may not be reproduced by any means, including digital, without prior permission.
 Hierdie kaart mag nie deur enige metode herproduseer word, insluitend digitaal, sonder vooraf verkreeë goedkeuring nie.



Printed by the Government Printer, Private Bag X85, Pretoria
 Gedruk deur die Staatsdrukker, Privaatsak X85, Pretoria

REFERENCE

VERKLARING

National Freeway; National Route		Nasionale Deurpad; Nasionale Rote	
Arterial Road		Hoofverkeersroete	
Main Road		Sekondêre Pad; Hoogtemerk	
Secondary Road; Bench Mark		Anders Pad; Brug	
Other Road; Bridge		Dowwe Pad en Voetslaanpad	
Track and Hiking Trail		Spoorweg; Stasie of Sylyn	
Railway; Station or Siding		Anders Spoorweg; Tonnell	
Other Railway; Tunnel		Opvulling; Deurgrawing	
Embankment; Cutting		Kraglyn	
Power Line		Beboude Gebied (Hoë, Laë Digtheid)	
Built-up Area (High, Low Density)		Geboue; Murasie	
Buildings; Ruin		Poskantoor; Polisieostasie; Winkel	
Post Office; Police Station; Store		Plek van Aanbidding; Skool; Hotel	
Place of Worship; School; Hotel		Draadheining; Muur	
Fence; Wall		Windpomp; Monument	
Windpump; Monument		Kommunikasietoring	
Communication Tower		Mynhoop; Uitgraving	
Mine Dump; Excavation		Peilbaken; Seevaartbaken	
Trigonometrical Station; Marine Beacon		Vuurtoring en Seevaartlig	
Lighthouse and Marine Light		Begraafplaas; Graf	
Cemetery; Grave			

Heights are in metres above mean sea level
 Hoogtes is in meter bo gemiddelde seespieël

Mean magnetic declination 23°33' West of True North (July 2002).
 Mean annual change 6' Westwards (2000-2005).
 Supplied by Hermanus Magnetic Observatory.

Gemiddelde magnetiese deklinasie 23°33' Wes van Ware Noord (Julie 2002).
 Gemiddelde jaarlikse verandering 6' Weswaarts (2000-2005).
 Voorsien deur die Hermanus Magnetiese Observatorium.

CONTOUR INTERVAL 20 METRES KONTTOERTUSSENRUIMTE 20 METER

Gauss Conform Projection. Central Meridian 19° East.
 Hartebeesthoek 94 Datum (WGS84 Ellipsoid).

The grid lines of the South African Co-ordinate System are indicated in the margin by short black ticks at 10 000 metre intervals, with co-ordinate values in units of 10 000 metres in blue.

Die ruitlyne van die Suid-Afrikaanse Koördinaatsisteem word in die kantruite aangetoon deur kort swart strepies 10 000 meter van mekaar, met koördinaatwaardes in eenhede van 10 000 meter in blou.

INDEX TO SHEETS INDEKS VAN VELLE

30'	45'	19°	15'
3318BC	3318BD	3319AC	
WESTERN CAPE			
30'	45'	19°	30'
3318DA	3318DB	3319CA	
45'	45'	19°	45'
3318DC	3318DD	3319CC	
34'	45'	19°	34'

Whilst every effort is made to ensure the accuracy of this map, users noting errors and omissions are requested to notify the Chief Directorate: Surveys and Mapping.

Alle pogings moontlik word aangewend om die akkuraatheid van hierdie kaart te verseker. Gebruikers word versoek om die Hoofdirektoraat: Opmetings en Kartering, te verwittig van enige foute of weglatings.

REFERENCE

VERKLARING

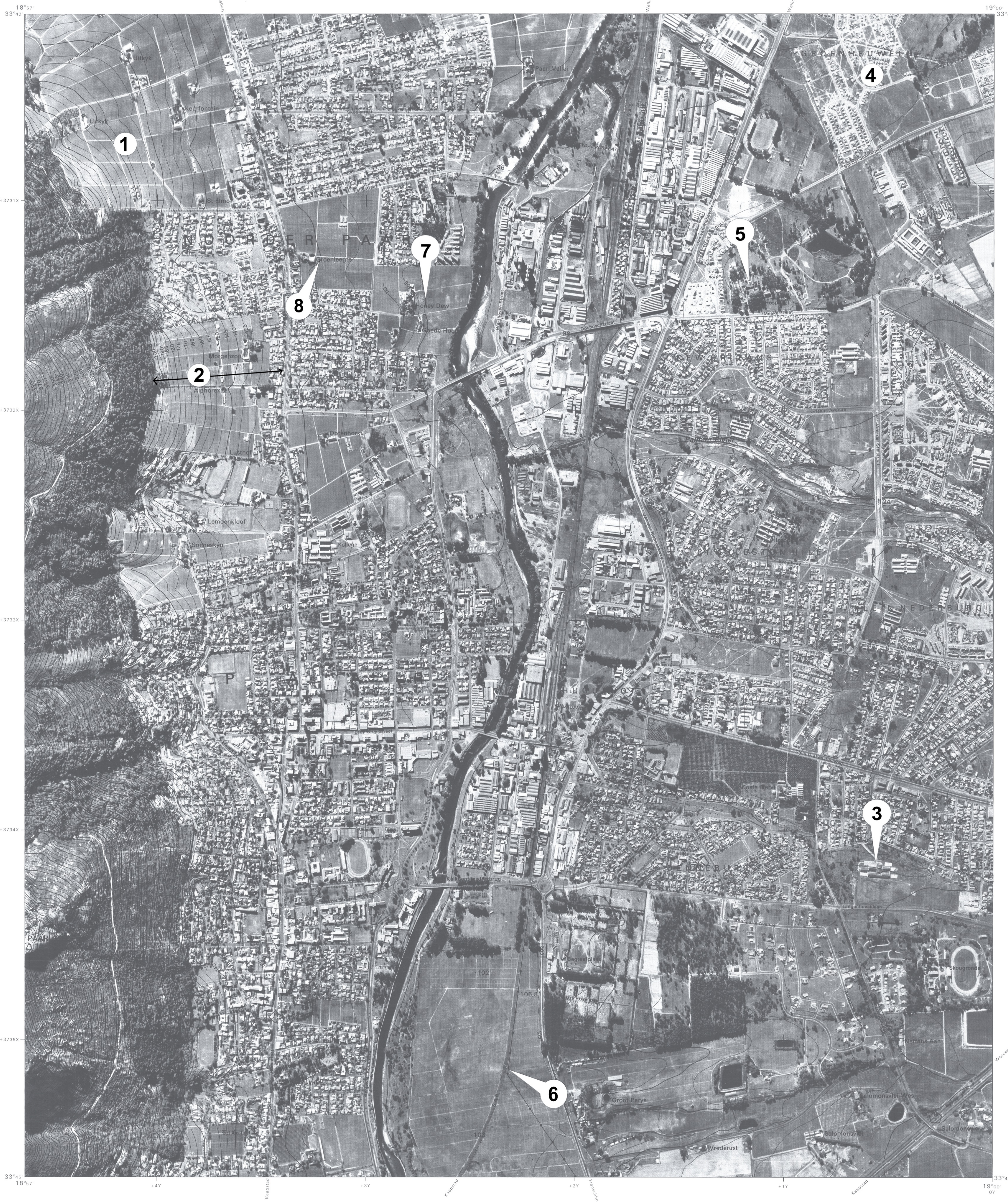
International Boundary and Beacon		Internasionale Grens en Baken	
Provincial Boundary		Provinsiale Grens	
Protected Area		Bewarings Gebied	
Perennial River		Standhoudende River	
Non-perennial River		Nie-standhoudende River	
Dry Pan		Droë Loop	
Marsh and Vlei		Moeras en Vlei	
Pipeline (above ground)		Pyplyn (bo die grond)	
Water Tower; Reservoir; Water Point		Watertoring; Reservoir; Waterpunt	
Coastal Rocks		Kuslynrotse	
Prominent Rock Outcrop		Prominente Klipbaken	
Erosion; Sand		Erosie; Sand	
Woodland		Beboste Gebied	
Cultivated Land		Bewerkte Land	
Orchard or Vineyard		Boord of Wingerd	
Recreation Ground		Ontspanningssterrein	
Row of Trees		Rye Bome	

Kadastrale inligting verstrek deur die Landmeter-generaal
 Oorspronklike Plaas

Cadastral information supplied by the Surveyor-General
 Original Farms

Geographical names, show in this type face, have not been officially approved.
 Geografiese name, in hierdie letterbeeld, is nie amptelik goedgekeur nie.

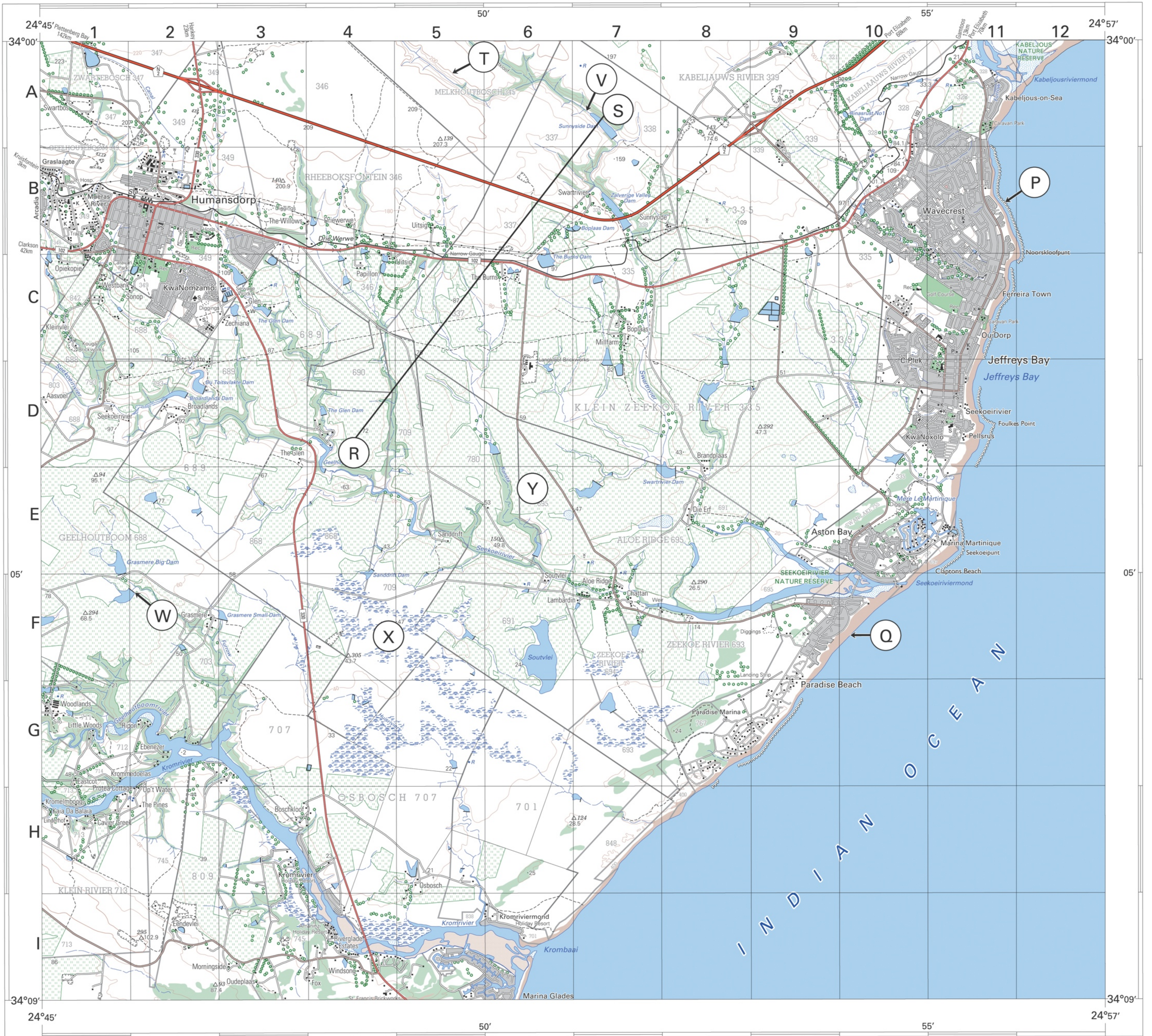




INDEKS VAN VELLE INDEX TO SHEETS

DB19	DB20	CA16
DB24	DB25	CA21
DD4	DD5	CC1

19°00'



Published by the Chief Directorate: Surveys and Mapping, Private Bag X10, Mowbray
Gepubliseer deur die Hoofdirektoraat: Opmetings en Kartering, Privaatsak X10, Mowbray
© State Copyright 2002 Staatsouteursreg
This map may not be reproduced by any means, including digital, without prior permission.
Hierdie kaart mag nie deur enige metode herproduseer word, insluitend digitaal, sonder vooraf verkreepte goedkeuring nie.

Printed by the Chief Directorate: Surveys and Mapping.
Gedruk deur die Hoofdirektoraat: Opmetings en Kartering.

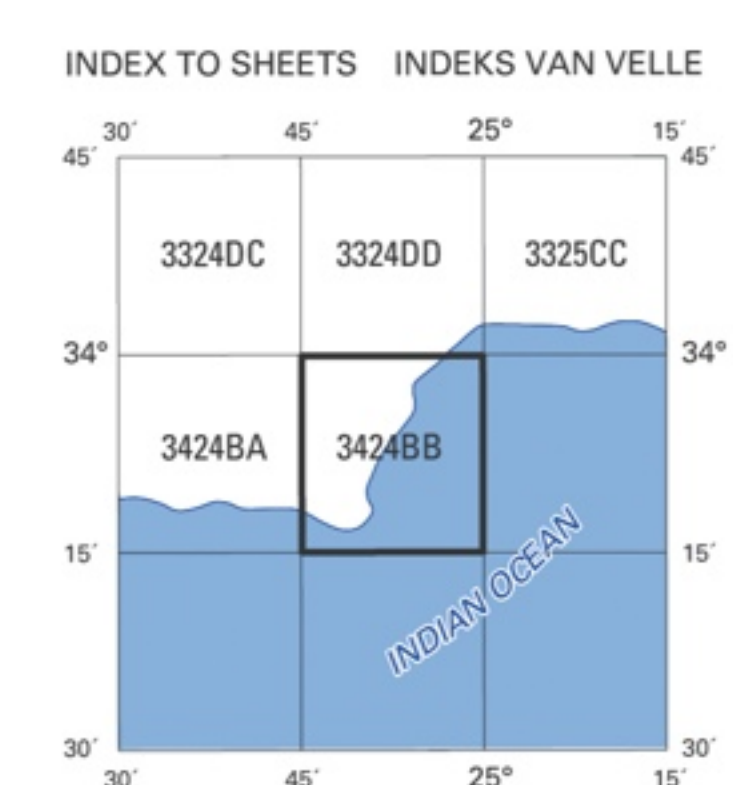


Heights are in metres above mean sea level
Hoogtes is in meter bo gemiddelde seespieël

CONTOUR INTERVAL 20 METRES KONTORTUSSENRUIMTE 20 METER

Gauss Conform Projection, Central Meridian 25° East.
Hartebeesthoek 94 Datum (WGS84 Ellipsoid).

Mean magnetic declination 25°29' West of True North (July 2001).
Mean annual change 9' Westwards (1995-2000).
Supplied by Hermanus Magnetic Observatory.
Gemiddelde magnetiese deklinasie 25°29' Wes van Ware Noord (Julie 2001).
Gemiddelde jaarlikse verandering 9' Weswaarts (1995-2000).
Voorsien deur die Hermanus Magnetiese Observatorium.



REFERENCE VERKLARING

National Freeway; National Route	Nasionale Deurpad; Nasionale Roete
Arterial Road	Hoofverkeersroete
Main Road	Hoofpad
Secondary Road; Bench Mark	Sekondêre Pad; Hoogtepunt
Other Road; Bridge	Andere Pad; Brug
Track and Hiking Trail	Dowwe Pad en Voetslaanpad
Railway; Station or Siding	Spoorweg; Stasie of Sylyn
Other Railway; Tunnel	Andere Spoorweg; Tunnel
Embankment; Cutting	Opvulling; Deurgrawing
Power Line	Kraglyn
Built-up Area (High, Low Density)	Beboude Gebied (Hoë, Lae Digtheid)
Buildings; Ruin	Geboue; Mursie
Post Office; Police Station; Store	Poskantoor; Polisie-stasie; Winkel
Place of Worship; School; Hotel	Plek van Aanbidding; Skool; Hotel
Fence; Wall	Dradheining; Muur
Windpump; Monument	Windpomp; Monument
Communication Tower	Kommunikasietoring
Mine Dump; Excavation	Mynhoop; Uitgraving
Trigonometrical Station; Marine Beacon	Peilbaken; Seevaartbaken
Lighthouse and Marine Light	Vuurtoring en Seevaartlig
Cemetery; Grave	Begraafplaas; Graf

REFERENCE VERKLARING

International Boundary and Beacon	Internasionale Grens en Baken
Provincial Boundary	Provinsiale Grens
Protected Area	Bewaringsgebied
Perennial River	Standhoudende Rivier
Non-perennial River	Nie-standhoudende Rivier
Non-Perennial Water	Nie-standhoudende Water
Dry Pan	Droë Loop
Marsh and Vlei	Moeras en Vlei
Pipeline (above ground)	Pylynn (bo die grond)
Water Tower; Reservoir; Water Point	Watertoring; Reservoir; Waterpunt
Coastal Rocks	Kuslynroete
Prominent Rock Outcrop	Prominente Klipbank
Erosion; Sand	Erosie; Sand
Woodland	Beboeste Gebied
Cultivated Land	Bewerkte Land
Orchard or Vineyard	Boord of Wingerd
Recreation Ground	Ontspanningsterrein
Row of Trees	Rye Bome

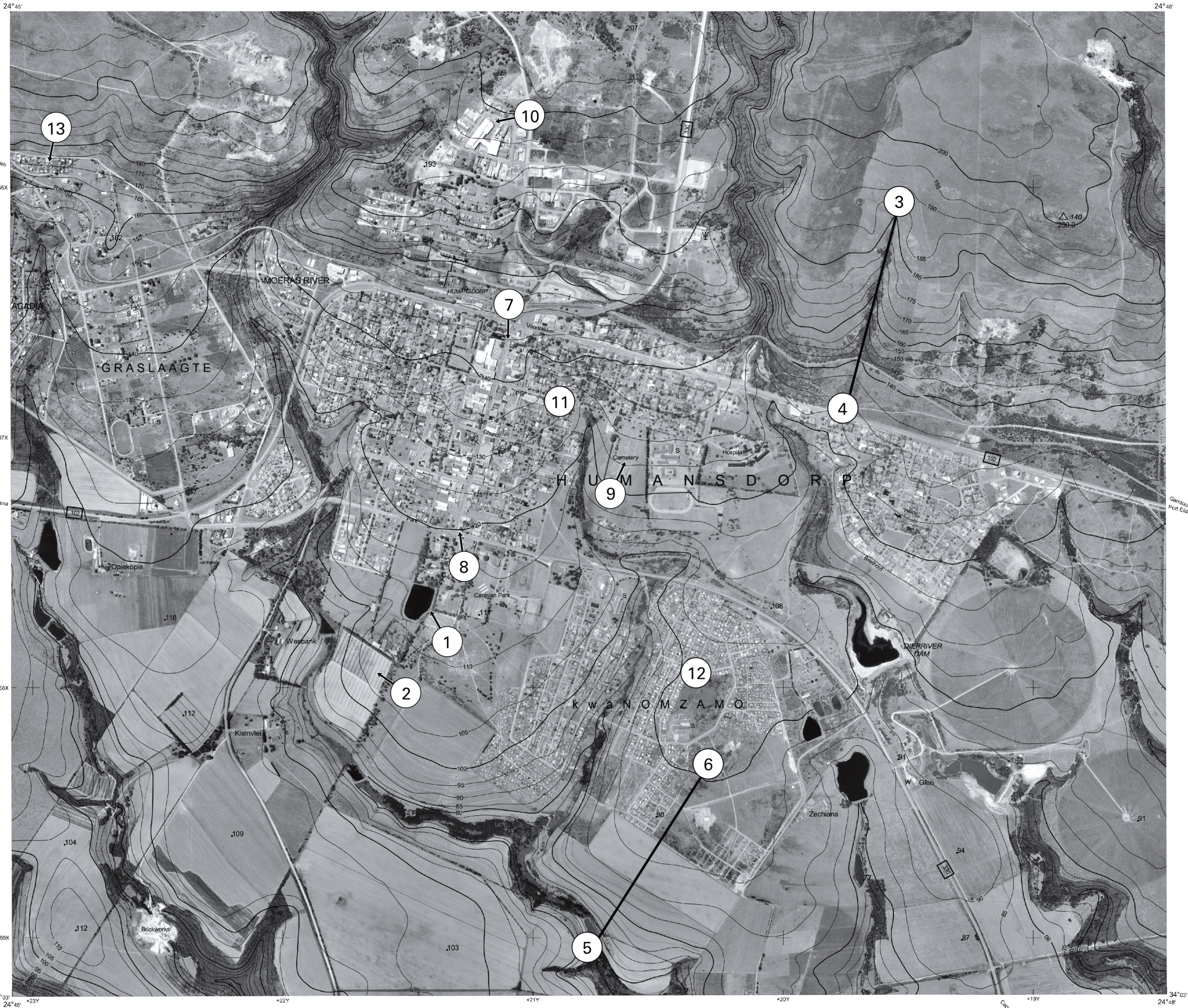
Cadastral information supplied by the Surveyor-General
Original Farms

Kadastrale inligting verskrek deur die Landmeter-generaal
Oorspronklike Plase

Whilst every effort is made to ensure the accuracy of this map, users noting errors and omissions are requested to notify the Chief Directorate: Surveys and Mapping.



Alle pogings moontlik word aangewend om die akkuraatheid van hierdie kaart te verseker. Gebruikers word versoek om die Hoofdirektoraat: Opmetings en Kartering, te verwittig van enige foute of weglatings.



Published by the Chief Directorate: Surveys and Mapping, Private Bag X10, Mowbray
Gepubliseer deur die Hoof Direkoraat: Opmetings en Kartering, Private Sak X10, Mowbray

Photography 499/357
Fotografie 499/357

© State Copyright 2001 Staatsouteursreg

Whilst every effort is made to ensure the accuracy of this map, users noting errors and omissions are requested to notify the Chief Directorate: Surveys and Mapping.

Alte pogings moontlik word aangewend om die akkuraatheid van hierdie kaart te verseker. Gebruikers word versoek om die Hoofdirekoraat: Opmetings en Kartering, te verwittig van enige foute of weglatings.

Gauss Conform Projection, Central Meridian 25° East

Contour Interval 5 Meters

Grid Interval 1 000 Meters

Hartebeesthoek 94 Datum

WGS84 Ellipsoid

1:10 000



WGS84

Gauss Konforme Projeksie, Middellmeridian 25° Oos

Kontoertussenruimte 5 Meter

Ruittussenruimte 1 000 Meter

Hartebeesthoek 94 Datum

WGS84 Ellipsoid

3424 BB 1

SECOND EDITION
TWEDE UITGAWE
1999

INDEX TO SHEETS INDEKS VAN VELLE

3324DC26	3324DJ21	3324DD22
3424BA5	3424BB1	3424BB2
3424BA10	3424BB6	3424BB7

34°00' 24°45'