



**Western Cape
Government**

Education

Western Cape Education Department

Proposed school closures:
Learner placement plans
7 August 2012

Our aim

Our aim is to improve opportunities for our learners at these schools.

We would like to place them in schools that are better equipped to provide a quality education.



Western Cape
Government

Education

Rural school: Krombeksrivier, Eden Karoo

- **Dwindling learner numbers**
- **Multigrade teaching**
- **Total learners: 18**



Western Cape
Government

Education

Legend

- Grossly under-utilised (0-50%)
- Under-utilised (50%-75%)
- Acceptably-utilised (75%-100%)
- Over-utilised (100%-125%)
- Grossly over-utilised (>125%)
- Enrolment < required
- Small school
- Between medium & small school
- Medium school
- Between large & medium school
- Large school
- Extra-large school
- Over extra-large school



HEIDELBERG HS.

KROMBEKSRIVIER NGK PRIM.

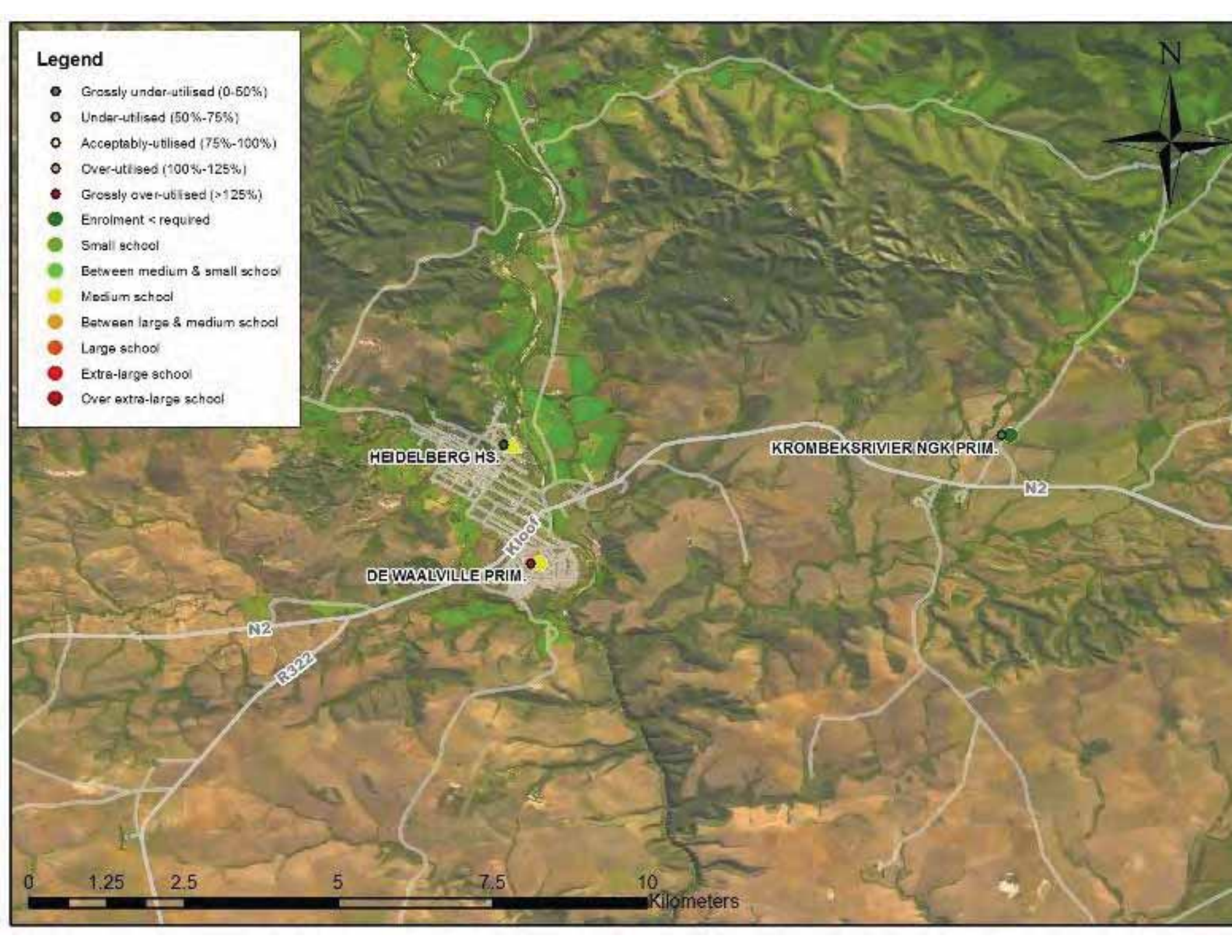
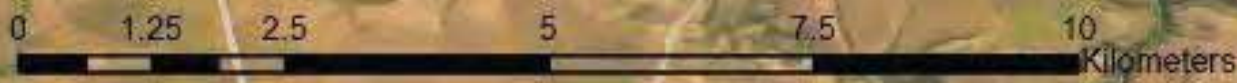
N2

DE WAALVILLE PRIM.

Kloof

N2

R322



Placement: De Waalville Primary

- **Single-grade teaching**
- **Variety of sports & cultural activities**
- **Learner support teacher**
- **Better literacy & numeracy results**
- **Good leadership & governance**
- **Well-kept school buildings**
- **Well-equipped computer lab**



Western Cape
Government

Education

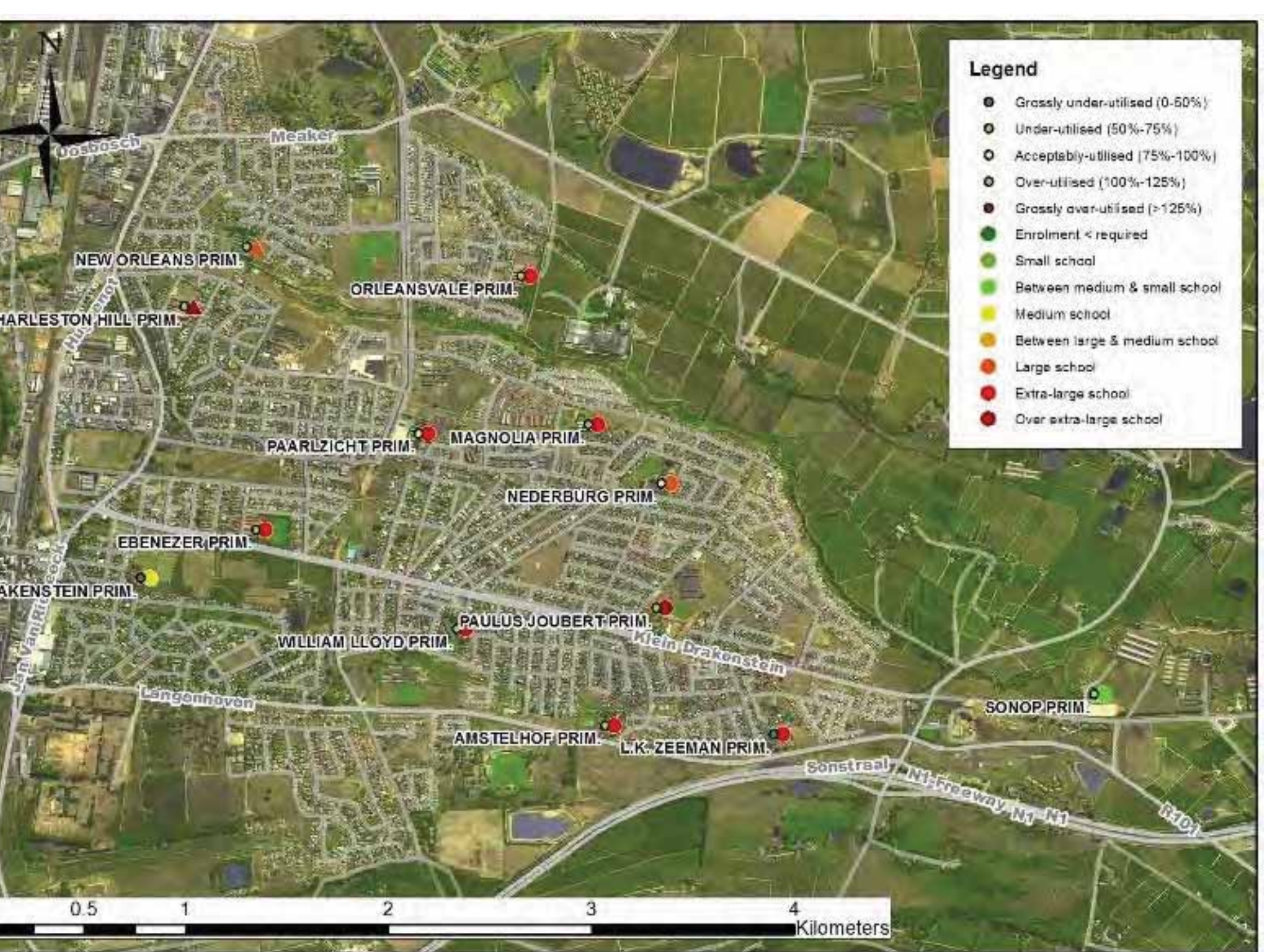
Rural school: L K Zeeman, C Winelands

- **Underutilised school building**
- **Decline in learner numbers**
- **Teachers in excess**
- **Total learner: 284**



Western Cape
Government

Education



Placement: Amstelhof Primary

- **No multigrade classes**
- **Better literacy & numeracy results**
- **Library, sports fields, school hall**
- **Extensive extra-mural activities**
- **Within walking distance**
- **Better teaching load distribution**



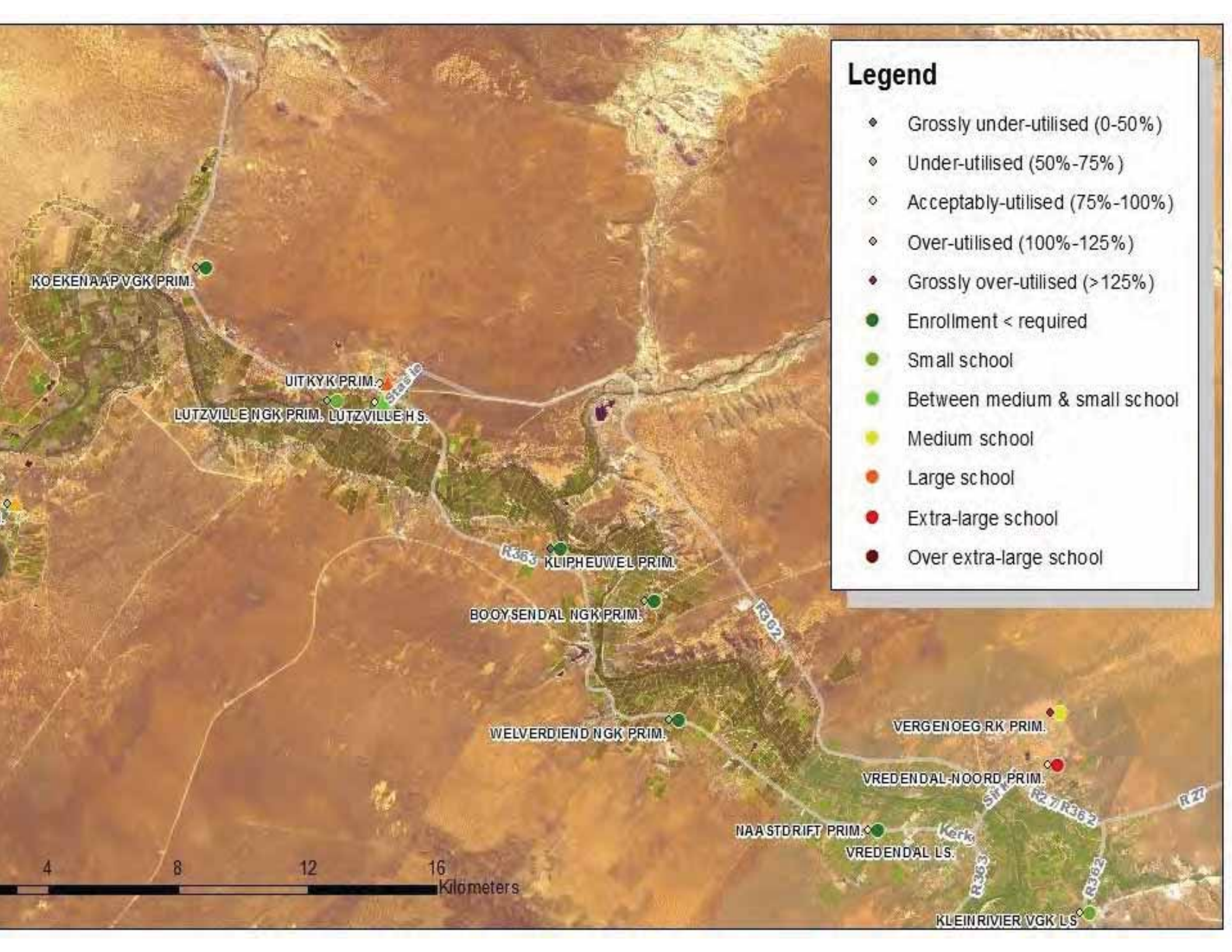
Rural school: Klipheuwel, West Coast

- **Dwindling learner numbers**
- **Multigrade class**
- **No feeder community**
- **Total learners: 30**



Western Cape
Government

Education



Legend

- ◆ Grossly under-utilised (0-50%)
- ◇ Under-utilised (50%-75%)
- ◊ Acceptably-utilised (75%-100%)
- ◊ Over-utilised (100%-125%)
- ◆ Grossly over-utilised (>125%)
- Enrollment < required
- Small school
- Between medium & small school
- Medium school
- Large school
- Extra-large school
- Over extra-large school

KOEKENAAP VGK PRIM.

UITKYK PRIM.

LUTZVILLE NGK PRIM. LUTZVILLE H.S.

KLIPHEUWEL PRIM.

BOOYSENDAL NGK PRIM.

WELVERDIEND NGK PRIM.

NAASTRIFT PRIM.

VREDENDAL LS.

VERGENOEG RK PRIM.

VREDENDAL-NOORD PRIM.

KLEIN RIVIER VGK LS.



Placement: Lutzville, Uitkyk

- **Single-grade classes**
- **Better literacy & numeracy results**
- **Systemic literacy & numeracy testing**
- **More sports and cultural activities**
- **Social development with age cohort**
- **Better feeding scheme**



Urban school: Lavisrylaan PS, North

- **Dwindling learner numbers**
- **Schools nearby offering same curriculum**
- **Total learners: 264 (62 Grade Rs)**



Western Cape
Government

Education



Legend

- Grossly under-utilised (0-50%)
- Under-utilised (50%-75%)
- Acceptably-utilised (75%-100%)
- Over-utilised (100%-125%)
- Grossly over-utilised (>125%)
- Enrolment - required
- Small school
- Between medium & small school
- Medium school
- Between large & medium school
- Large school
- Extra-large school
- Over extra-large school

EL'SBURY PRIM.

MATROOS, HOLY TRINITY RC PRIM.

MATROOSFONTEIN PRIM.

CLARKE PRIM.

RIVERTON PRIM.

LAVISRYLAAN PRIM.

BISHOP LAVIS PRIM.

HELDERBERG PRIM.

STEEENFONTEIN PRIM.

GREENLANDS PRIM.

HILLSIDE PRIM.

VALPARK PRIM.

BERGVILLE PRIM.

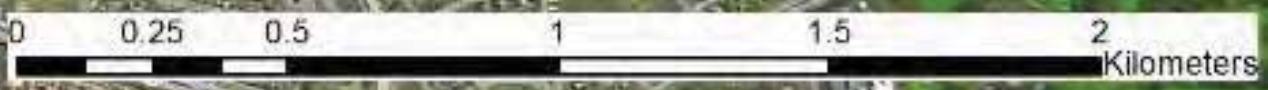
NOOITGEDACHT PRIM.

PARKVALE PRIM.

ANTANA PRIM.

MONTEVIDEO PRIM.

PFONTEIN PRIM.



Placement: Helderberg, Bishop Lavis PS

- **Well-maintained school buildings**
- **Good academic results**
- **Integrated primary school**
- **Variety of sports and cultural activities**
- **Well-managed school**
- **Better teaching load distribution**



Western Cape
Government

Education

Urban school: Peak View HS, Central

- **Poor condition of buildings**
- **Declining academic results, Grades 8 to 12**
- **Consistently poor matric results**
- **Total learners: 652**

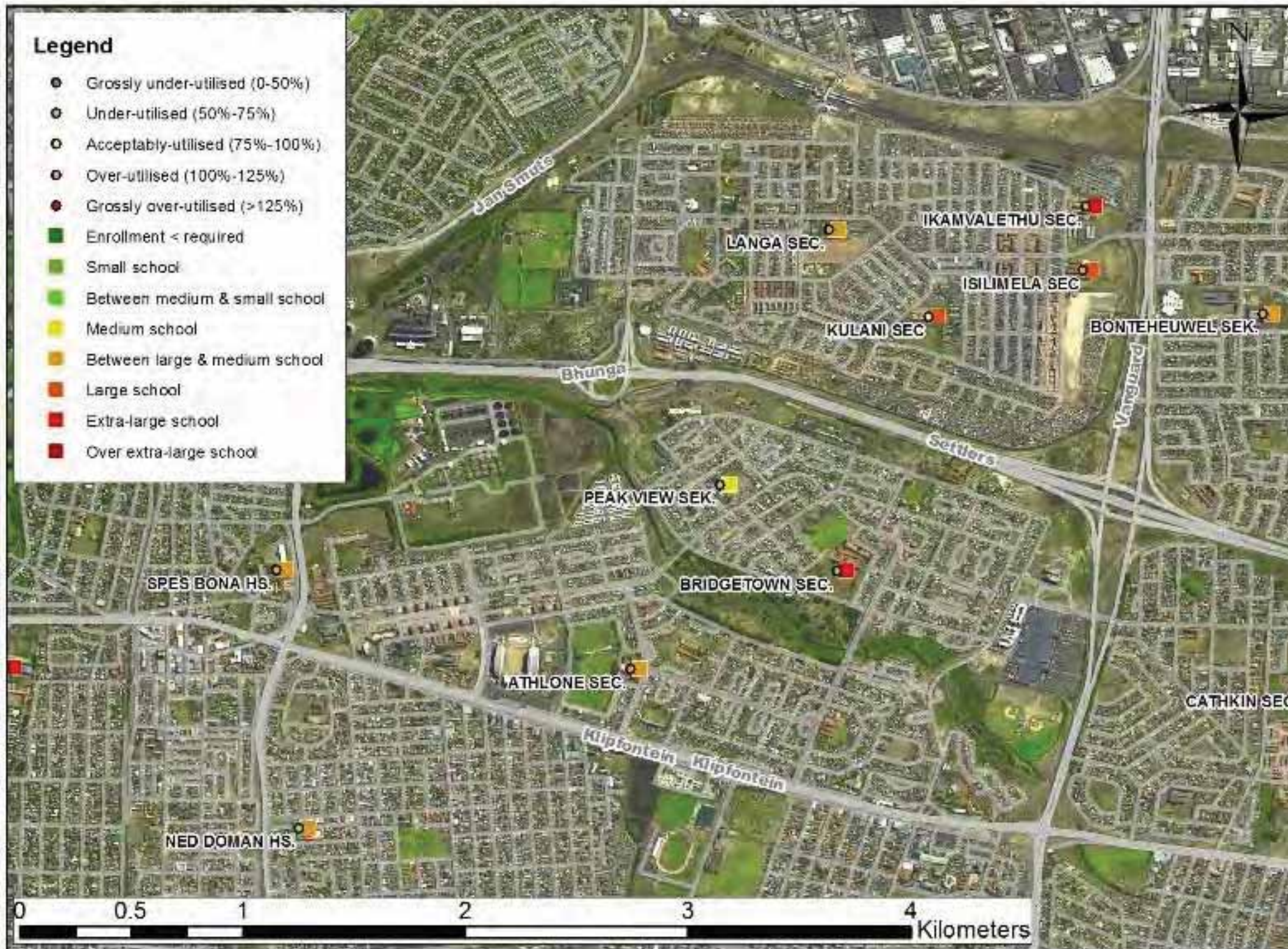


Western Cape
Government

Education

Legend

- Grossly under-utilised (0-50%)
- Under-utilised (50%-75%)
- Acceptably-utilised (75%-100%)
- Over-utilised (100%-125%)
- Grossly over-utilised (>125%)
- Enrollment < required
- Small school
- Between medium & small school
- Medium school
- Between large & medium school
- Large school
- Extra-large school
- Over extra-large school



Placement: Bridgetown, among others

- **Better physical resources**
- **Good management & leadership**
- **Consistent academic performance**
- **Extra-mural activities (sports & culture)**
- **Better retention & matric pass rates**
- **Support programmes for Grades 8 & 9**
- **Bridging course for isiXhosa speakers**



Urban school: Zonnebloem Nest, Central

- **Poor condition of buildings**
- **Buildings do not belong to department**
- **Consistent underperformance in all grades, 8 to 12**
- **High drop-out rate**
- **Total numbers: 309**



Western Cape
Government

Education

Legend

- Grossly under-utilised (0-50%)
- Under-utilised (50%-75%)
- Acceptably-utilised (75%-100%)
- Over-utilised (100%-125%)
- Grossly over-utilised (>125%)
- Enrollment < required
- Small school
- Between medium & small school
- Medium school
- Between large & medium school
- Large school
- Extra-large school
- Over extra-large school



Placement: Walmer, among 8 others

- **Better facilities (labs, arts, music)**
- **Better retention & matric pass rates**
- **Wider subject choices**
- **Well-managed, established schools**
- **Intervention programmes from Grade 8**
- **Wider choice of extra-mural activities**
- **More recreational space**



Western Cape Education Department

The proposed learner placement plan is work in progress. The department will finalise the plan in consultation with affected parties once decisions on school closures are finalised.



Western Cape
Government

Education