



Verwysing: 20190725-7169
Lêerno: 6/1/5
Navrae: LR Abrahams

Inrigtingsontwikkeling en -koördineringsminuut: 0004/2019

Aan: Adjunk-direkteurs-generaal, Hoofdirekteure, Direkteure, (Hoofkantoor en distrikskantore), Kringbestuurders, Hoofde: Bestuur en Beheer, Hoofonderwyskundiges van skole, Prinsipale van gewone openbare skole en Voorsitters van beheerliggame

Onderwerp: Opname om data oor die getal, grootte, tipe en toestand van klaskamers by gewone openbare skole in die Wes-Kaap te verbeter

1. Die aanvraag na toelating tot Wes-Kaap Onderwysdepartement (WKOD) se skole groei jaarliks en skole verkeer onder groot druk van alle rolspelers om plekke beskikbaar te stel.
2. Om die aanvraag effektief te kan bestuur, benodig die WKOD akkurate inligting oor die getal, grootte, tipe en toestand van klaskamers wat tans by gewone openbare skole in die Wes-Kaap beskikbaar is.
3. Die WKOD versoek skole dus om 'n Excel-opnamevorm in te vul en die antwoorde op die Excel-sigblad per e-pos te stuur aan die administratiewe beampte wat die kringbestuurder in elke kring help om administratiewe sake in die kring te hanteer.
4. Die inligting wat ingesamel is, sal baie help om ons begrip van die huidige kapasiteit by gewone openbare skole en die uitdagings waarteen die stelsel te staan kom wat betref leerderakkommodasie, te verbeter.
5. Prinsipale word ook gevra om 'n afskrif van die grondvloerplan van die skool, wat die uitleg van die skool en die huidige indeling en benutting van klaskamers aanwys, te skandeer en oor te dra. 'n Voorbeeld van sodanige plan is aangeheg as verwysing.
6. 'n Webwerf skakel vir die oplaai van die plan is beskikbaar onder die menu-opsie Administrasie \ Algemene inligting \ Skoolplan op SOBIS. Met hierdie skakel kan skole hul vloerplanne oplaai en indien.
7. Die opname en die oordrag van die vloerplanne behoort teen 15 Augustus 2019 afgehandel te word.

8. Die WKOD is besig om distriksbeamptes oor die proses in te lig en daar sal van hulle verwag word om willekeurige steekproewe van die data by skole te bevestig en bekragtig om te verseker dat die inligting betroubaar is vir die gebruik deur WKOD se senior bestuur.
9. Bring asseblief die inhoud van hierdie minuut onder die aandag van alle personeel en lede van beheerliggame.

GETEKEN: HA LEWIS

ADJUNK-DIREKTEUR-GENERAAL: INRIGTINGSONTWIKKELING EN -KOÖRDINERING

DATUM: 2019-07-31



Western Cape
Government

Education

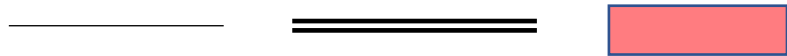
WESTERN CAPE EDUCATION DEPARTMENT

FLOOR PLAN AND LAYOUT OF:

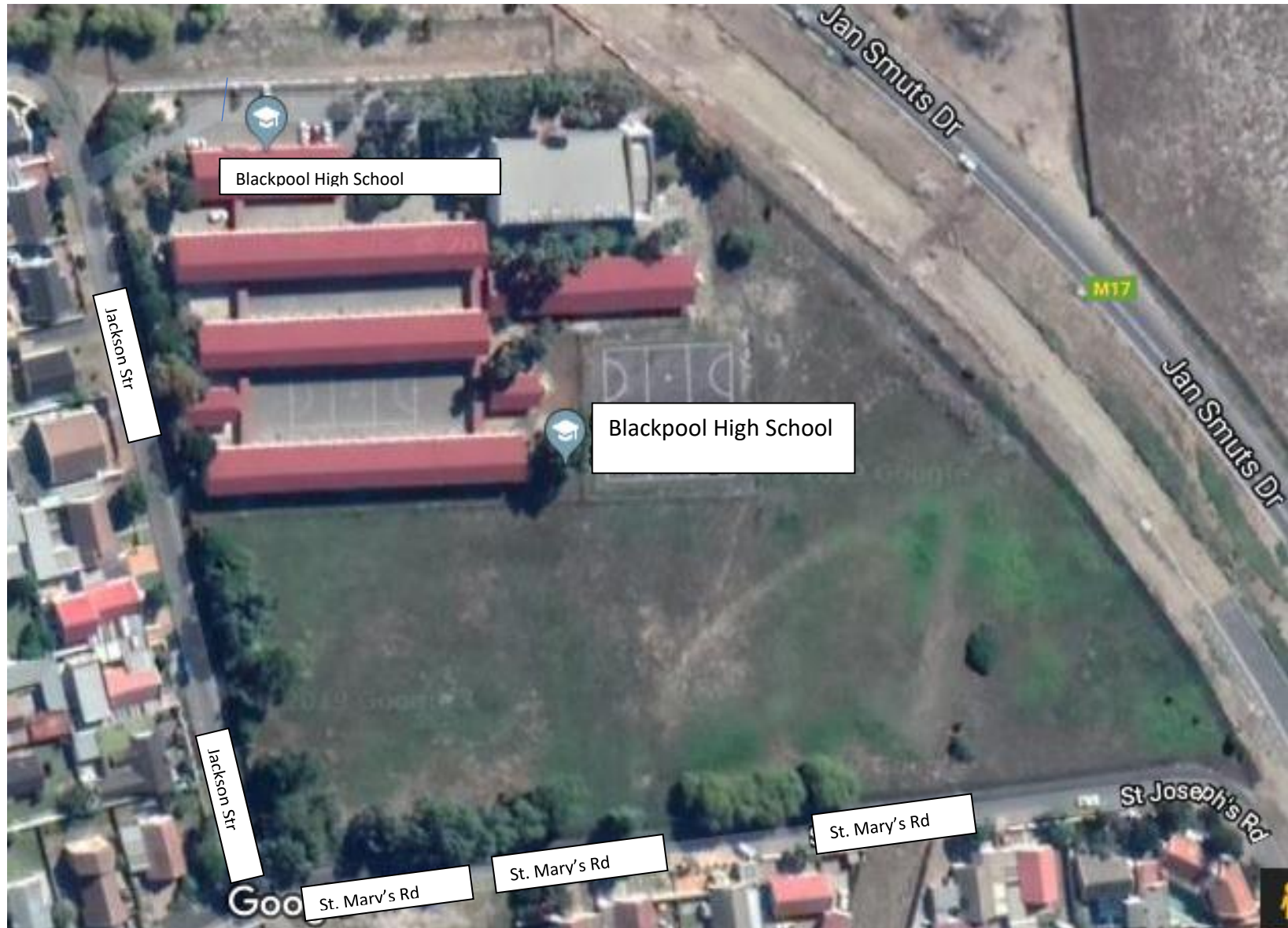
BLACKPOOL HIGH SCHOOL (0105483443)

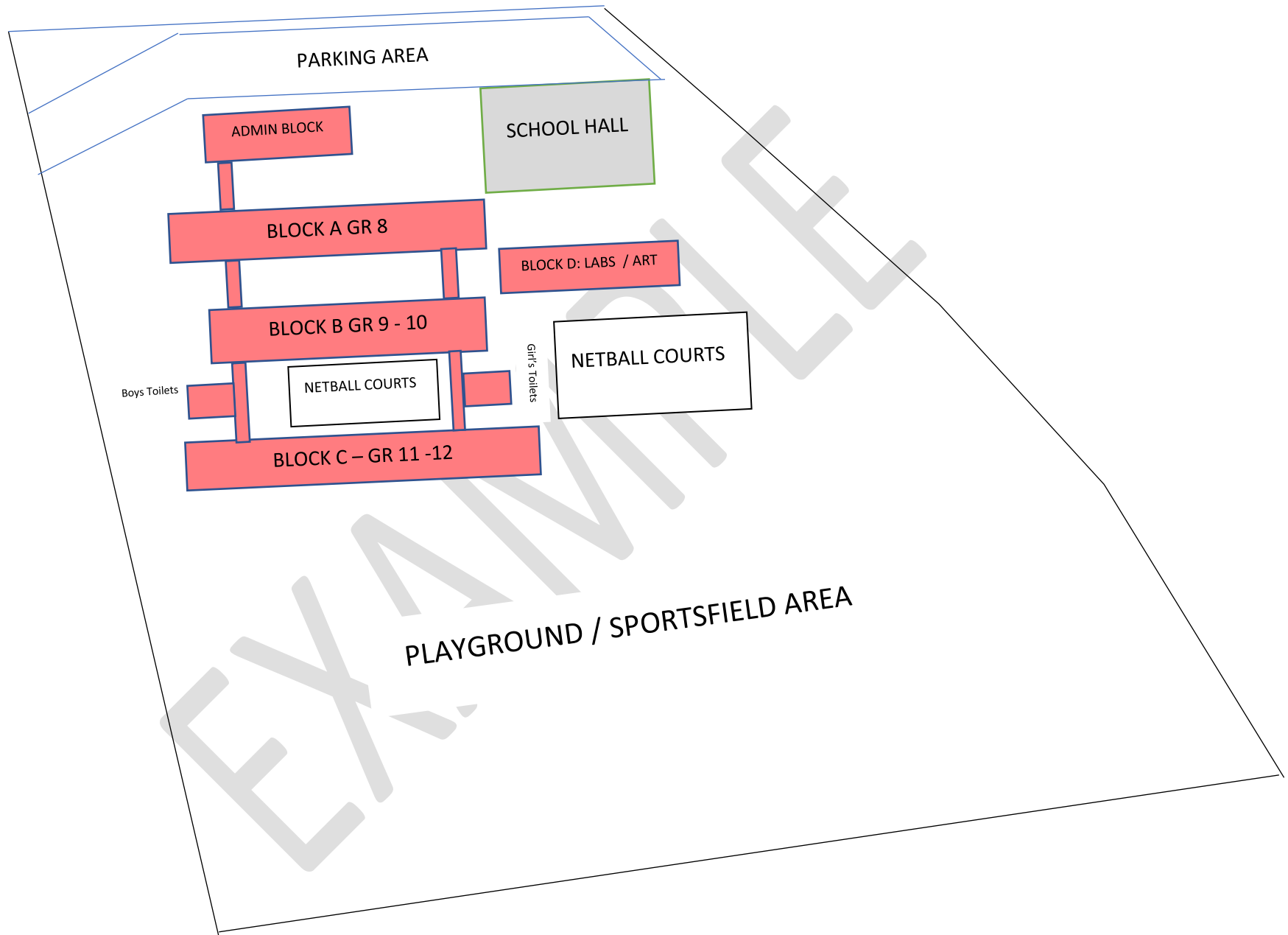
Cnr. Jackson & St Mary's Roads, Lansdowne

PLEASE NOTE:

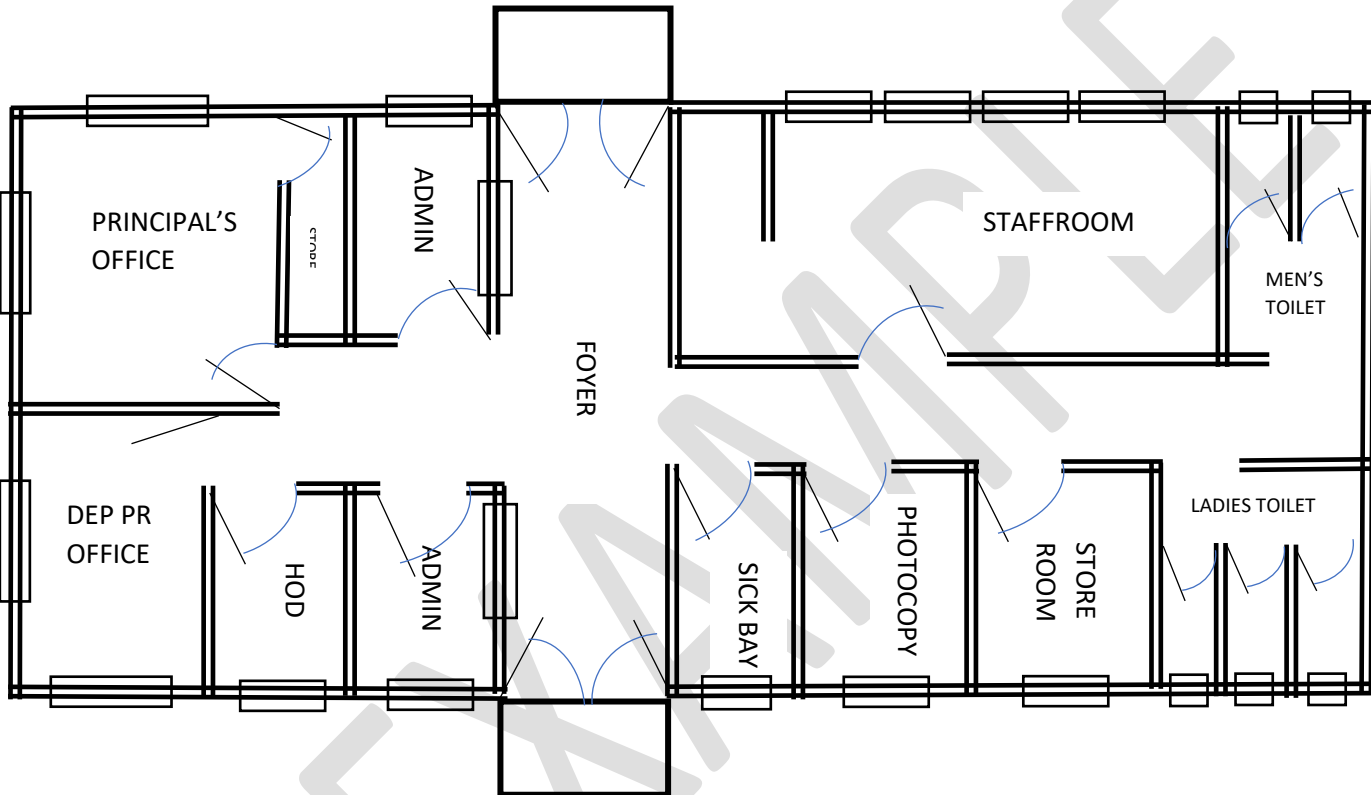
- Schools may submit a PDF / scanned copy of school building plans or a scanned copy of the basic school layout / classroom plan if it is available.
- Kind UPLOAD the document as follows. This should be done by 15 August 2019. The link for uploading the plan is available under the Administration \ General Information \ School Plan menu option on CEMIS. This link will allow schools to upload and submit their floor plans.
- The following is a very basic example of a floor plan that was done by a school and how it was done.
- It was not drafted by an architect or draughtsman, but serve to illustrate the basic elements of the floor plan of a school
- It aims to provide the WCED with clear view of the layout of the school and the classroom types
- It provides a graphic illustration of the classrooms, workshops, toilets admin block etc.
- The aerial picture of the school is taken from Google Maps (Pleas note that these aerial views are outdated)
- It was drawn using Basic Word Shapes. 
- The basic word shapes were drawn on the google map (overlaid) to get the scale and approximate size.

BLACKPOOL HIGH SCHOOL (0105483443) Cnr. Jackson & St Mary's Roads, Jan Smuts

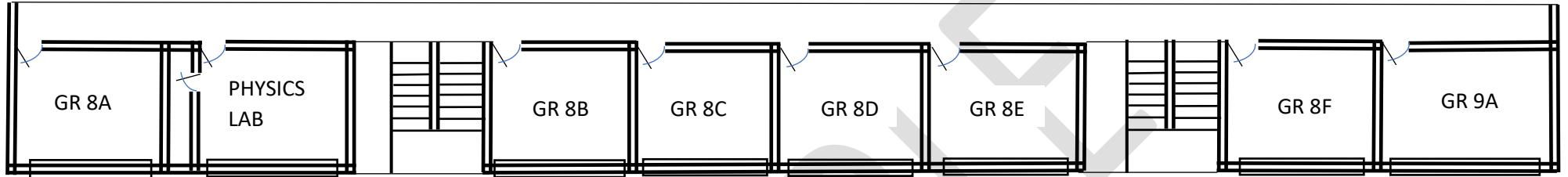




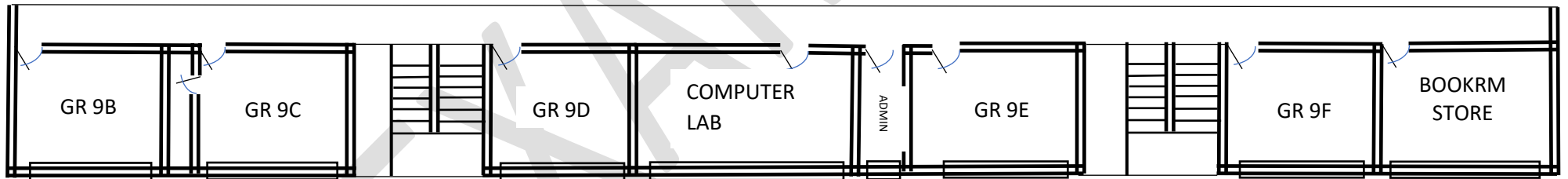
BLACKPOOL SS: ADMIN BLOCK LAYOUT



**BLACKPOOL SS: BLOCK A
GROUND FLOOR CLASSROOM LAYOUT**

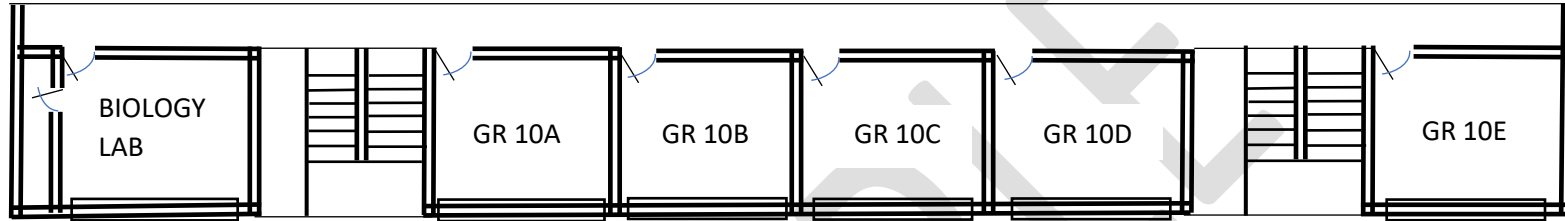


**BLACKPOOL SS: BLOCK A
FIRST FLOOR CLASSROOM LAYOUT**



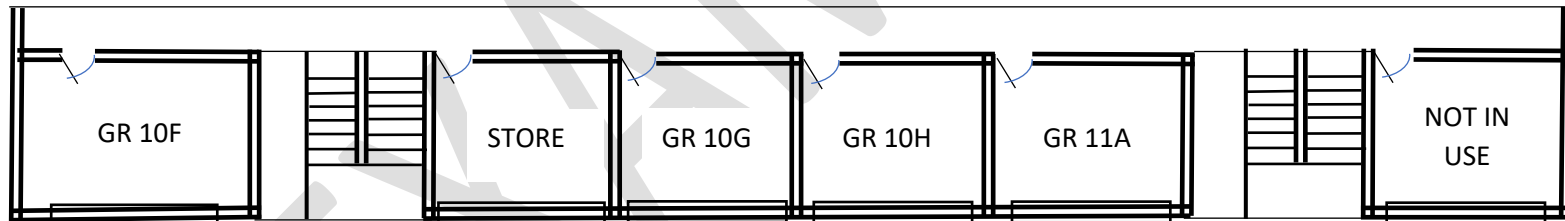
BLACKPOOL SS: BLOCK B

GROUND FLOOR CLASSROOM LAYOUT

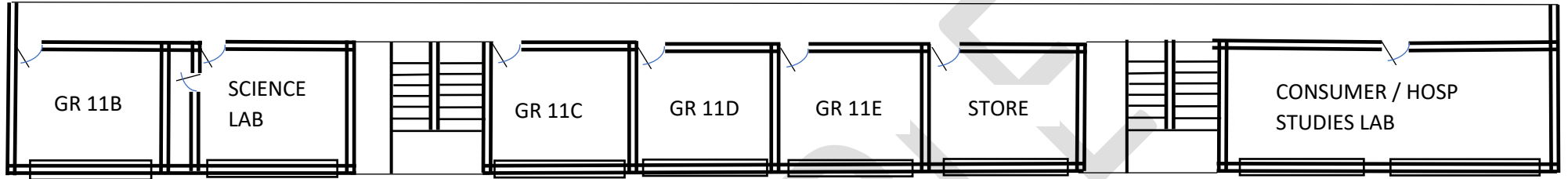


BLACKPOOL SS: BLOCK A

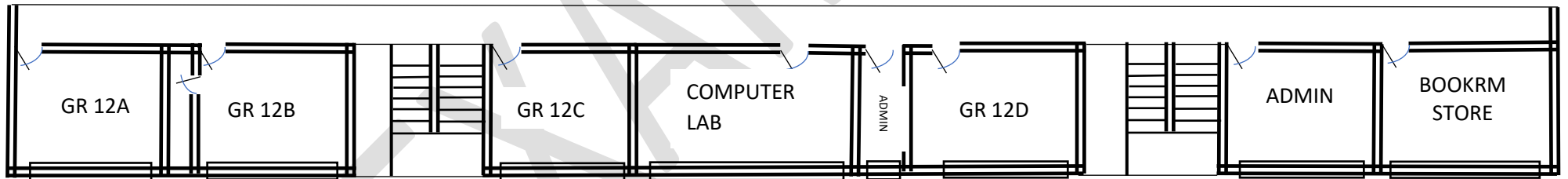
FIRST FLOOR CLASSROOM LAYOUT



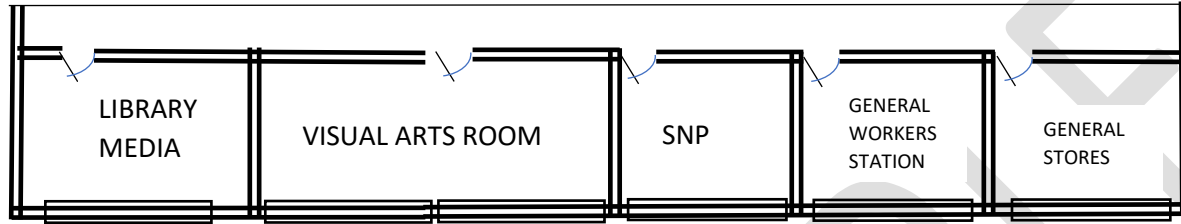
**BLACKPOOL SS: BLOCK C
GROUND FLOOR CLASSROOM LAYOUT**



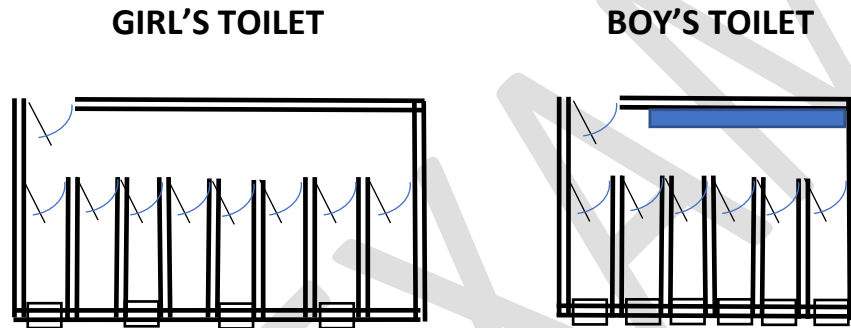
**BLACKPOOL SS: BLOCK C
FIRST FLOOR CLASSROOM LAYOUT**



**BLACKPOOL SS: BLOCK D
CLASSROOM LAYOUT**



**BLACKPOOL SS: BLOCK D
GIRLS AND BOYS TOILET LAYOUT**



SCHOOL STAMP:

DATE:

SCHOOL PRINCIPAL SIGNATURE: