



Isalathiso: 20190725-7169  
Inombolo yefayili: 6/1/5  
Imibuzo: LR Abrahams

INGcaciso eMfutshane yoPhuhliso noQuquzelelo lwamaZiko: 0004/2019

Iya: KumaSekela Balawuli-Jikelele, kuBalawuli abaziiNtloko, kuBalawuli (kwaNdlunkulu nakwii-ofisi zezithili), kuBaphathi beeSekethe, kwiiNtloko zoLawulo noKuphathwa kwamaZiko, kwiiNgcali zeMfundo eziziiNtloko zezikolo, kwiiNqununu zezikolo zikarhulumente nakooSihlalo bamabhunga olawulo

**Isihloko: Isaveyi yokuphucula idatha yamanani, ubukhulu, uhlobo nemeko yeeklassi kwizikolo zikarhulumente eNtshona Koloni**

1. Imfuno yokwamkelwa kwabafundi kwizikolo zeSebe leMfundo leNtshona Koloni (WCED) iyakhula qho ngonyaka yaye nezikolo zijamelene noxinzelelo olukhulu olusuka kubo bonke abathathi-nxaxheba abafuna indawo yokufunda.
2. Ukulawula le nkqubo ngempumelelo, iSebe iWCED lifuna ingcaciso echanekileyo emalunga namanani, ubukhulu, uhlobo nemeko yeeklassi ekuyiyo ngoku kwizikolo zikarhulumente eziqhelekileyo eNtshona Koloni.
3. ISebe iWCED ke ngoko licela izikolo zizalise ifom yesaveyi ekwi-Excel yaye ziyithumele impendulo nge-imeyili kwi-Excel spreadsheet kwigosa lezolawulo, elincedisela umphathi wesekethe kwisekethe nganye ukuba alawule imiba yezolawulo kwisekethe leyo.
4. Le ngcaciso iqokelelweyo iya kunceda kakhulu ekuphuculeni ukuqonda kwethu umthamo ngokwamanani wezikolo zikarhulumente eziqhelekileyo ngoku nemingeni ejamelene nale nkqubo ngokubhekisele ekwamkeleni abafundi.
5. Kucelwa kwakhona iinqununu ziskene yaye zikhuphele (upload) ikopi yepleni yomgangatho esisiseko yesikolo, ebonisa indlela isikolo esimi ngayo nendlela ezabiwe nezisetyenziswa ngayo iiklassi ngoku. Umzekelo wepleni elolo hlobo iqhotyoshelwe apha ukwenzela ukuba uyifunde.
6. Ikhonkco lokufaka isicwangciso liyafumaneka phantsi koLawulo lweeNkqubo zoLawulo \ nolulwazi ngokubanzi \ isicwangciso semenyu kwiCEMIS. Eli nxibelelwano liya kuvumela izikolo ukuba zifake kwaye zingenise izicwangciso zazo zomgangatho.

7. Le saveyi nokukhutshelwa kweepeni zemigangatho mazigqitywe ungalulanga umhla we-15 Agasti 2019.
8. ISebe iWCED lazisa onke amagosa ezithili ngenkqubo yaye kuya kufuneka aqinisekise yaye angqiniseke (*validate*) iisampulu ezingacwangciswanga zedatha ezikolweni ukuqinisekisa ukuba le ngcaciso inyanisekile ukuba ingasetyenziswa ngabaphathi abakhulu beSebe iWCED.
9. Kucelwa wazise okukule ngcaciso imfutshane bonke abasebenzi namalungu amabhunga olawulo achaphazelekayo ukuze akuthathele ingqalelo.

**ISAYINWE:** NGU-HA LEWIS

**USEKELA MLAWULI-JIKELELE WOPUHLISO NOQUQUZELELO LWAMAZIKO**

**UMHLA:** 2019-07-31



Western Cape  
Government

Education

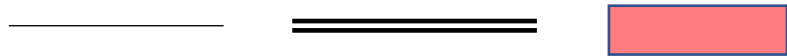
WESTERN CAPE EDUCATION DEPARTMENT

FLOOR PLAN AND LAYOUT OF:

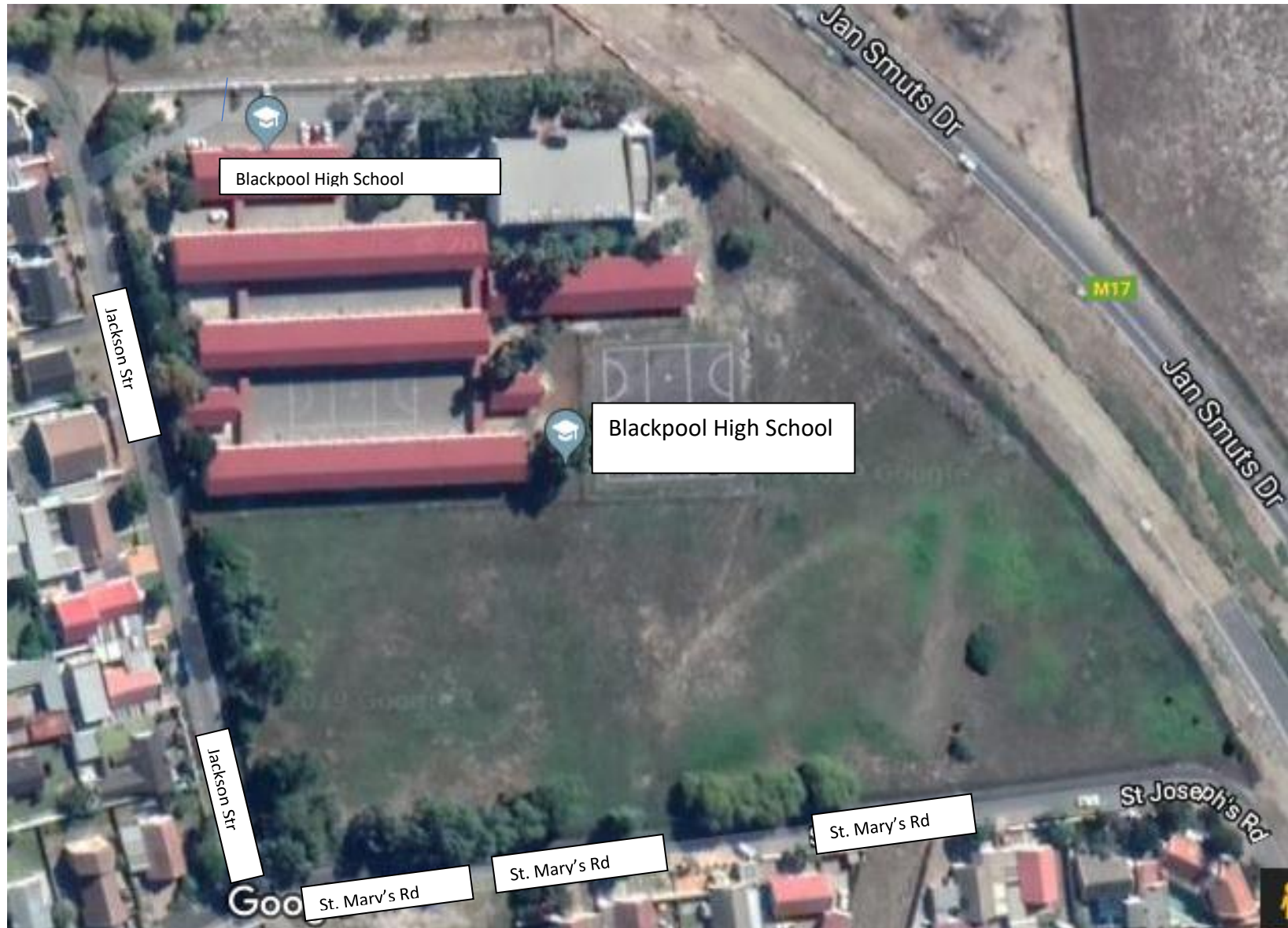
BLACKPOOL HIGH SCHOOL (0105483443)

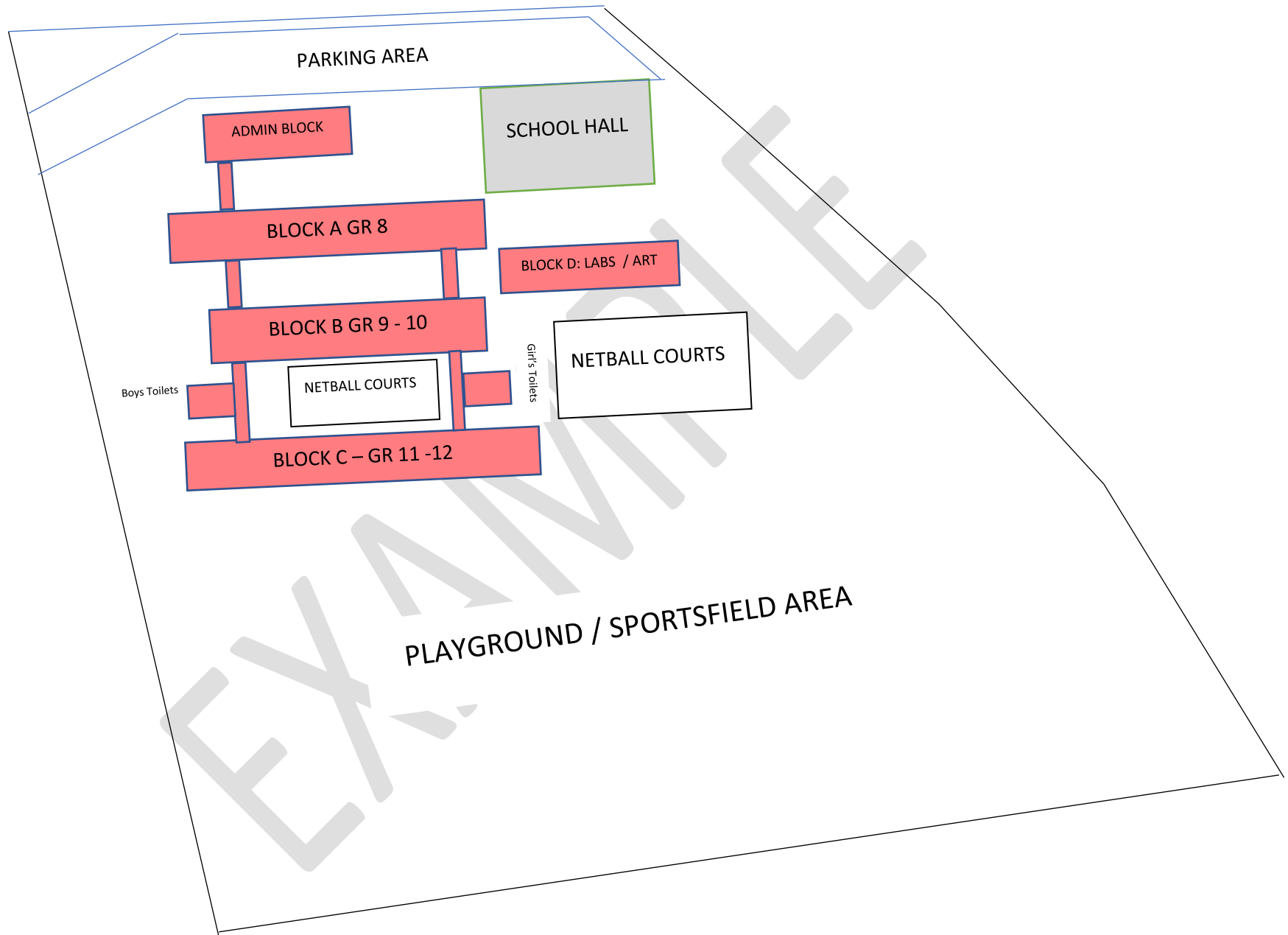
Cnr. Jackson & St Mary's Roads, Lansdowne

## PLEASE NOTE:

- Schools may submit a PDF / scanned copy of school building plans or a scanned copy of the basic school layout / classroom plan if it is available.
- Kind UPLOAD the document as follows. This should be done by 15 August 2019. The link for uploading the plan is available under the Administration \ General Information \ School Plan menu option on CEMIS. This link will allow schools to upload and submit their floor plans.
- The following is a very basic example of a floor plan that was done by a school and how it was done.
- It was not drafted by an architect or draughtsman, but serve to illustrate the basic elements of the floor plan of a school
- It aims to provide the WCED with clear view of the layout of the school and the classroom types
- It provides a graphic illustration of the classrooms, workshops, toilets admin block etc.
- The aerial picture of the school is taken from Google Maps (Pleas note that these aerial views are outdated)
- It was drawn using Basic Word Shapes. 
- The basic word shapes were drawn on the google map (overlaid) to get the scale and approximate size.

BLACKPOOL HIGH SCHOOL (0105483443) Cnr. Jackson & St Mary's Roads, Jan Smuts





PARKING AREA

ADMIN BLOCK

SCHOOL HALL

BLOCK A GR 8

BLOCK D: LABS / ART

BLOCK B GR 9 - 10

NETBALL COURTS

Boys Toilets

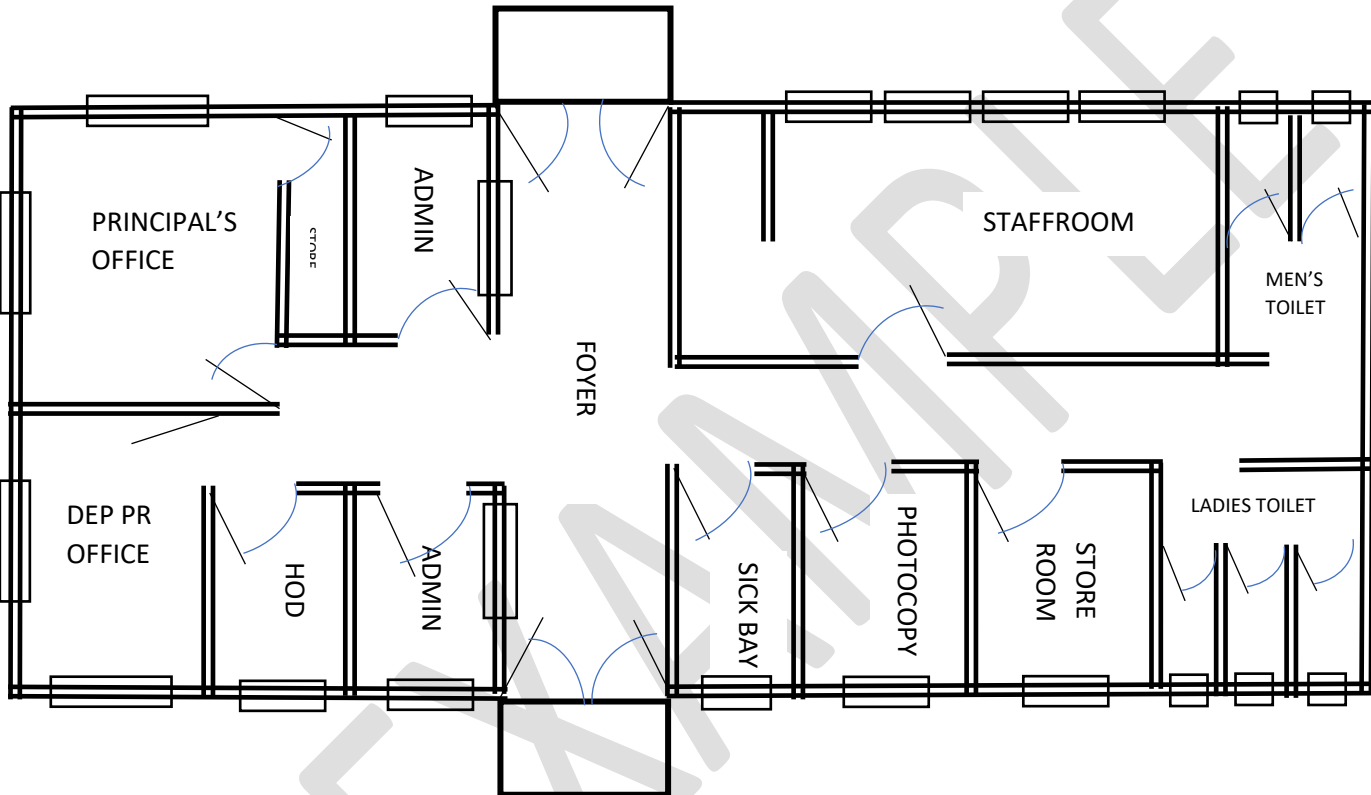
Girl's Toilets

NETBALL COURTS

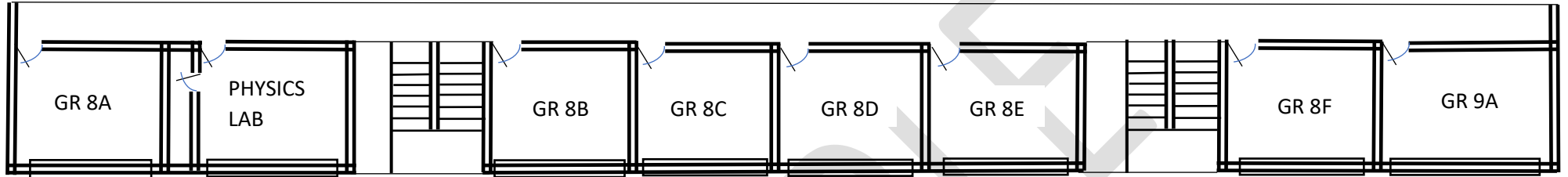
BLOCK C - GR 11 - 12

PLAYGROUND / SPORTSFIELD AREA

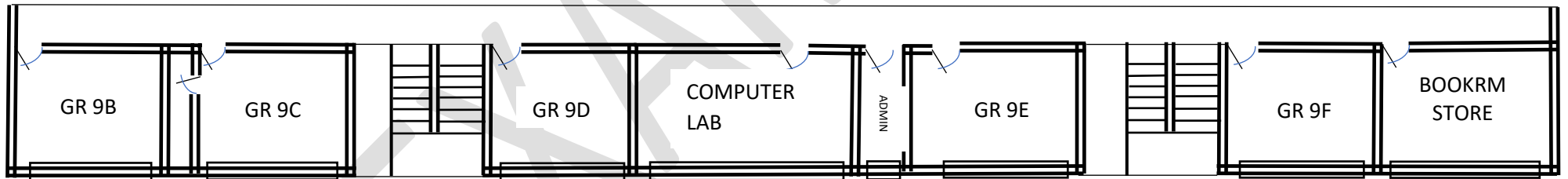
**BLACKPOOL SS: ADMIN BLOCK LAYOUT**



**BLACKPOOL SS: BLOCK A  
GROUND FLOOR CLASSROOM LAYOUT**



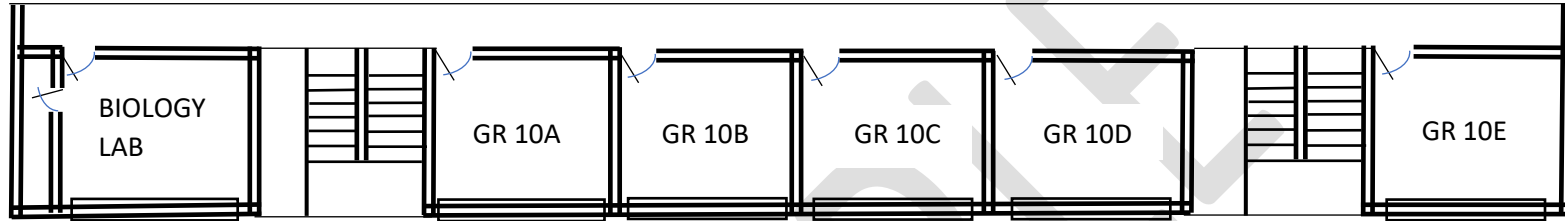
**BLACKPOOL SS: BLOCK A  
FIRST FLOOR CLASSROOM LAYOUT**





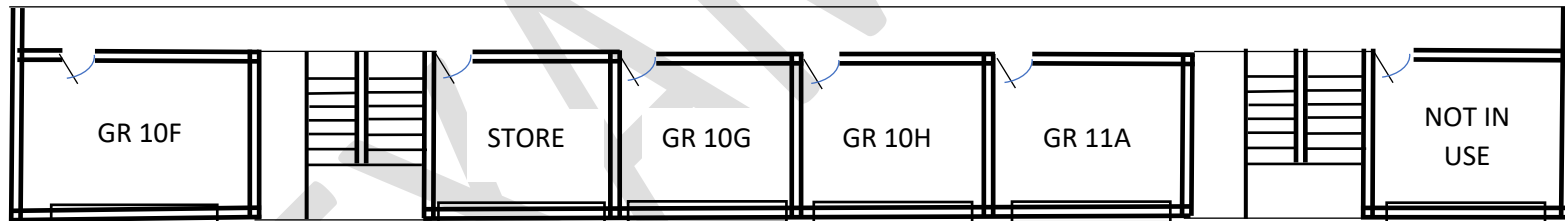
**BLACKPOOL SS: BLOCK B**

**GROUND FLOOR CLASSROOM LAYOUT**

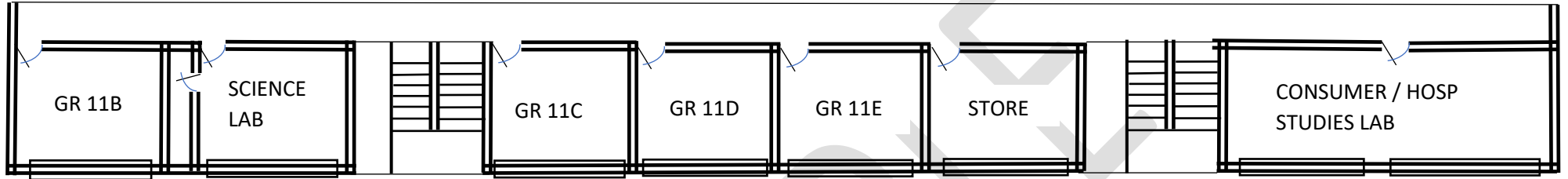


**BLACKPOOL SS: BLOCK A**

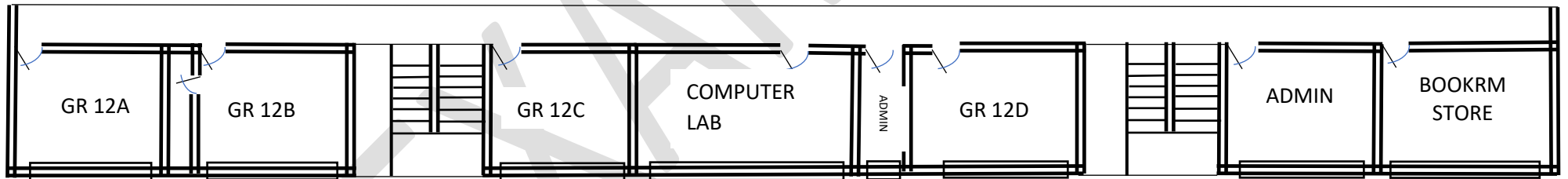
**FIRST FLOOR CLASSROOM LAYOUT**



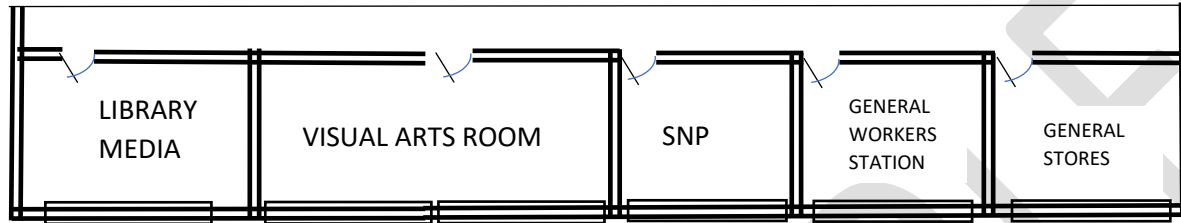
**BLACKPOOL SS: BLOCK C  
GROUND FLOOR CLASSROOM LAYOUT**



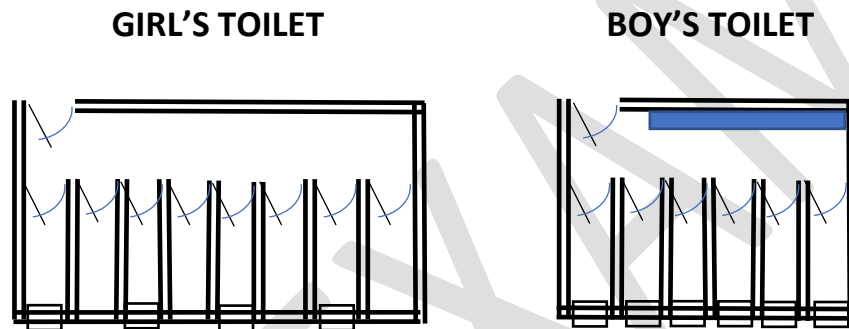
**BLACKPOOL SS: BLOCK C  
FIRST FLOOR CLASSROOM LAYOUT**



**BLACKPOOL SS: BLOCK D  
CLASSROOM LAYOUT**



**BLACKPOOL SS: BLOCK D  
GIRLS AND BOYS TOILET LAYOUT**



**SCHOOL STAMP:**

**DATE:**

**SCHOOL PRINCIPAL SIGNATURE:**